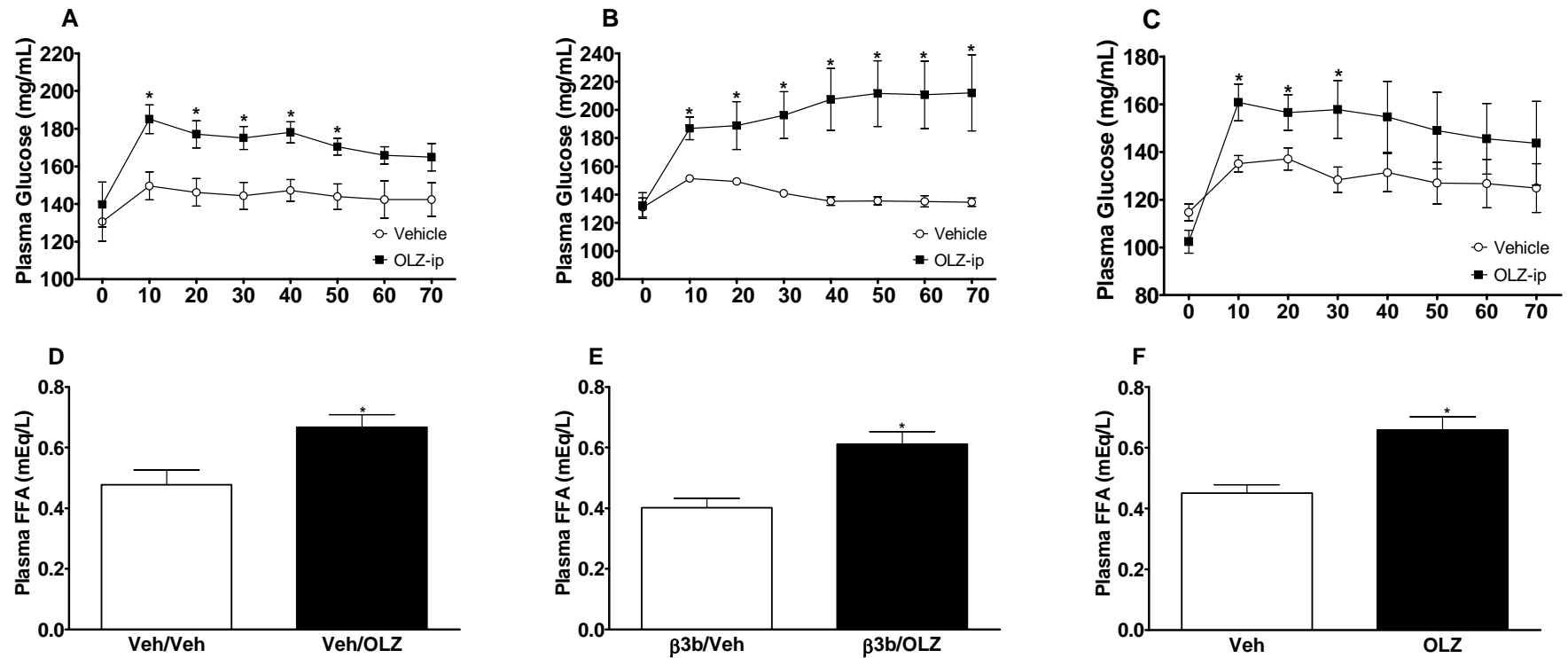


Supplemental Figure 1 – Time course (mean±SEM) of plasma levels of glucose after an intraperitoneal bolus of 4.5mg/Kg of Olanzapine (OLZ) or Vehicle (Veh) in fasting C57/BL6 male mice (A) and female (C), or male pre-treated with 1.5mg/Kg of a  $\beta$ 3-blocker (SR59230A) or Veh (B) (n=6-7 animals per group). Plasma free-fatty acid levels (mean±SEM) 70min after an intraperitoneal bolus of 4.5mg/Kg of OLZ or Veh in fasting C57/BL6 male mice (D) and female (F), or male pre-treated with 1.5mg/Kg of a  $\beta$ 3-blocker (SR59230A) or Veh (E) (n=6-7 animals per group). One-way ANOVA followed by Duncan test or Student *t*-test. \*Statistics denote comparison to respective Vehicle group,  $p < 0.05$ .



Supplemental Figure 2 – Relative gene expression (mean±SEM) in the hypothalamus of rats intravenously infused with olanzapine (OLZ-iv, n=10) or vehicle (n=8) following the hyperinsulinemic-euglycemic clamp.

