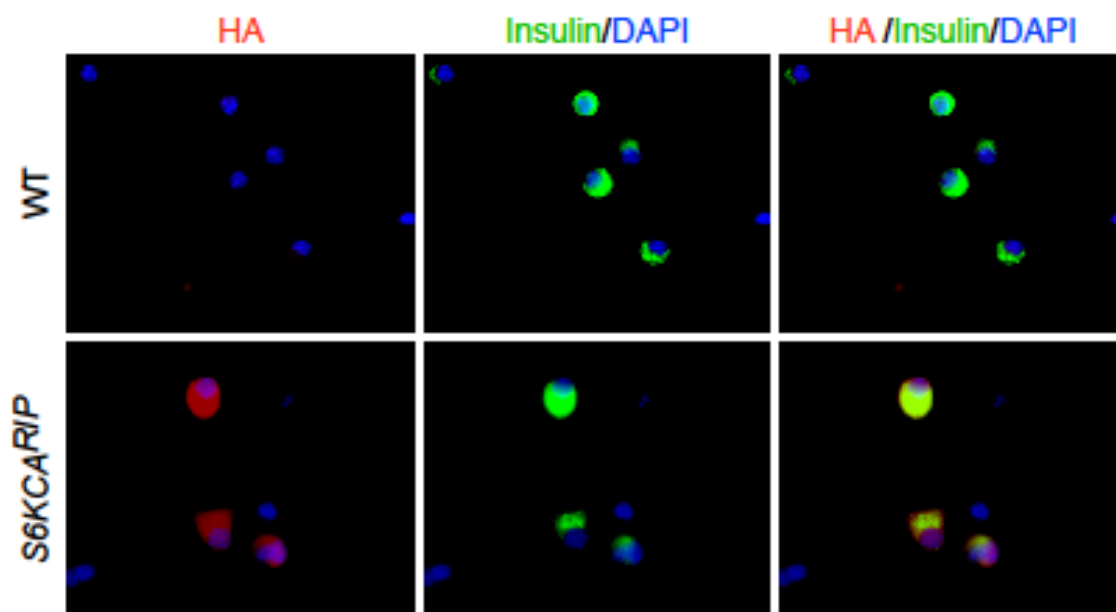


Supplemental Figure 1: In vitro assessment of cell size in wild-type and S6KCA^{RIP} animals
 Immunofluorescence staining for insulin (green) and HA tag (red) in dispersed cells from WT and S6KCA^{RIP} islets. DAPI was used to counter stain the nuclei.



Supplemental Table 1: Antibodies Used for Immunoblotting.

<i>Specie</i>	<i>Antibodies used</i>	<i>Source</i>
rabbit	Actin	Sigma
rabbit	Cdk2	Santa Cruz
mouse	Cdk4	Cell Signaling
mouse	CyclinD1	Cell Signaling
mouse	CyclinD2	Neomarkers Labvision
mouse	CyclinD3	Cell Signaling
rabbit	CyclinE	Santa Cruz
mouse	HA.11	Covance
rabbit	IRS1	Millipore
rabbit	IRS2	Millipore
mouse	p16	Santa Cruz
mouse	p21	BD Biosciences
rabbit	p27 ^{Kip1}	Cell Signaling
rabbit	phospho 4EBP1 (Ser65)	Cell Signaling
rabbit	phospho-Akt (Ser473 and Thr308)	Cell Signaling
rabbit	phospho-FoxO1 (Ser319)	Cell Signaling
rabbit	phospho-GSK3 α/β (Ser21/9)	Cell Signaling
rabbit	phospho-IRS1 (Ser307)	Millipore
rabbit	phospho-S6 kinase	Cell Signaling
rabbit	TSC2	Cell Signaling
mouse	Tubulin	Sigma