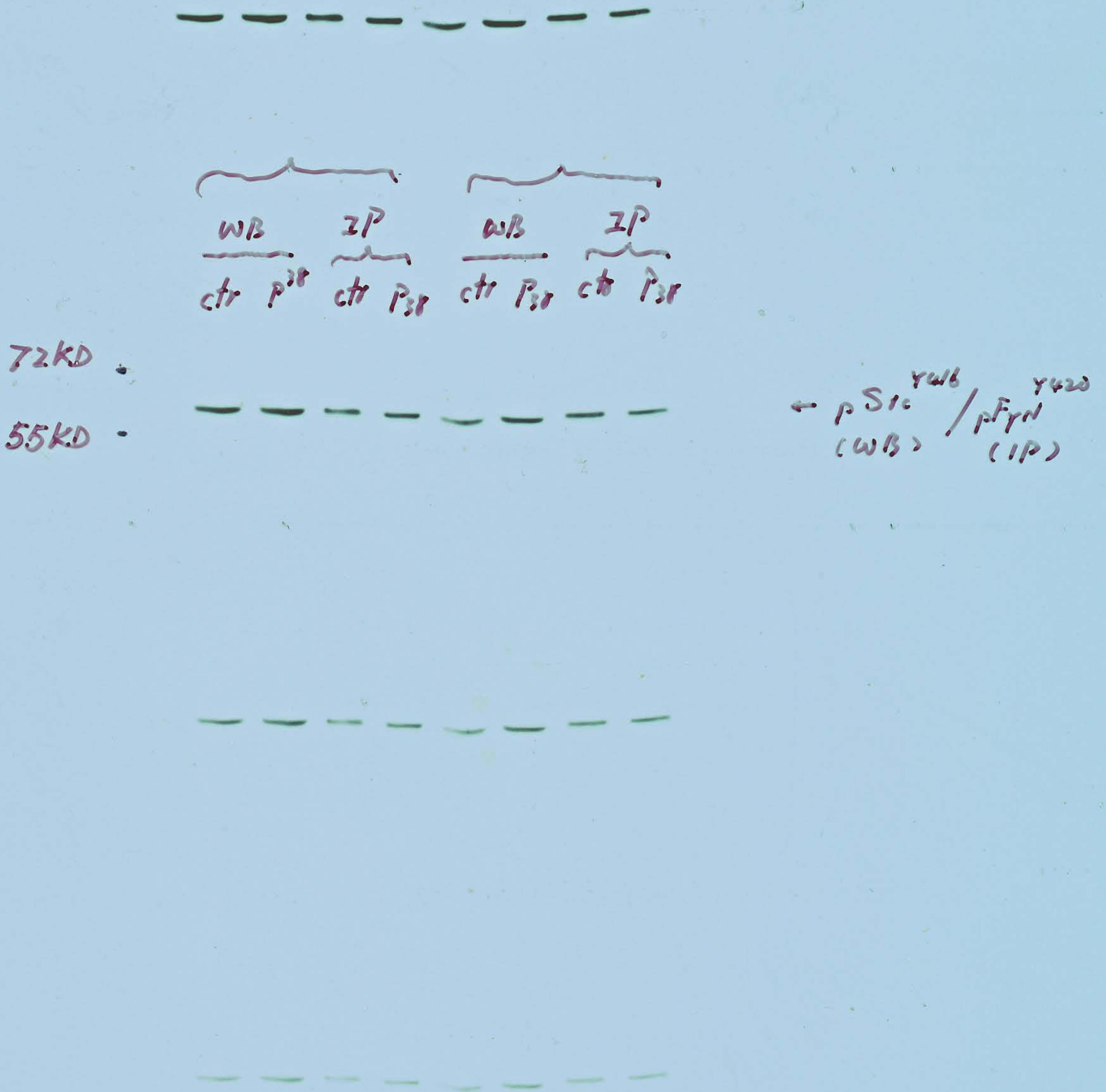


9-23-09, m9/22/09 A, samples: 8/19/09 at 8/

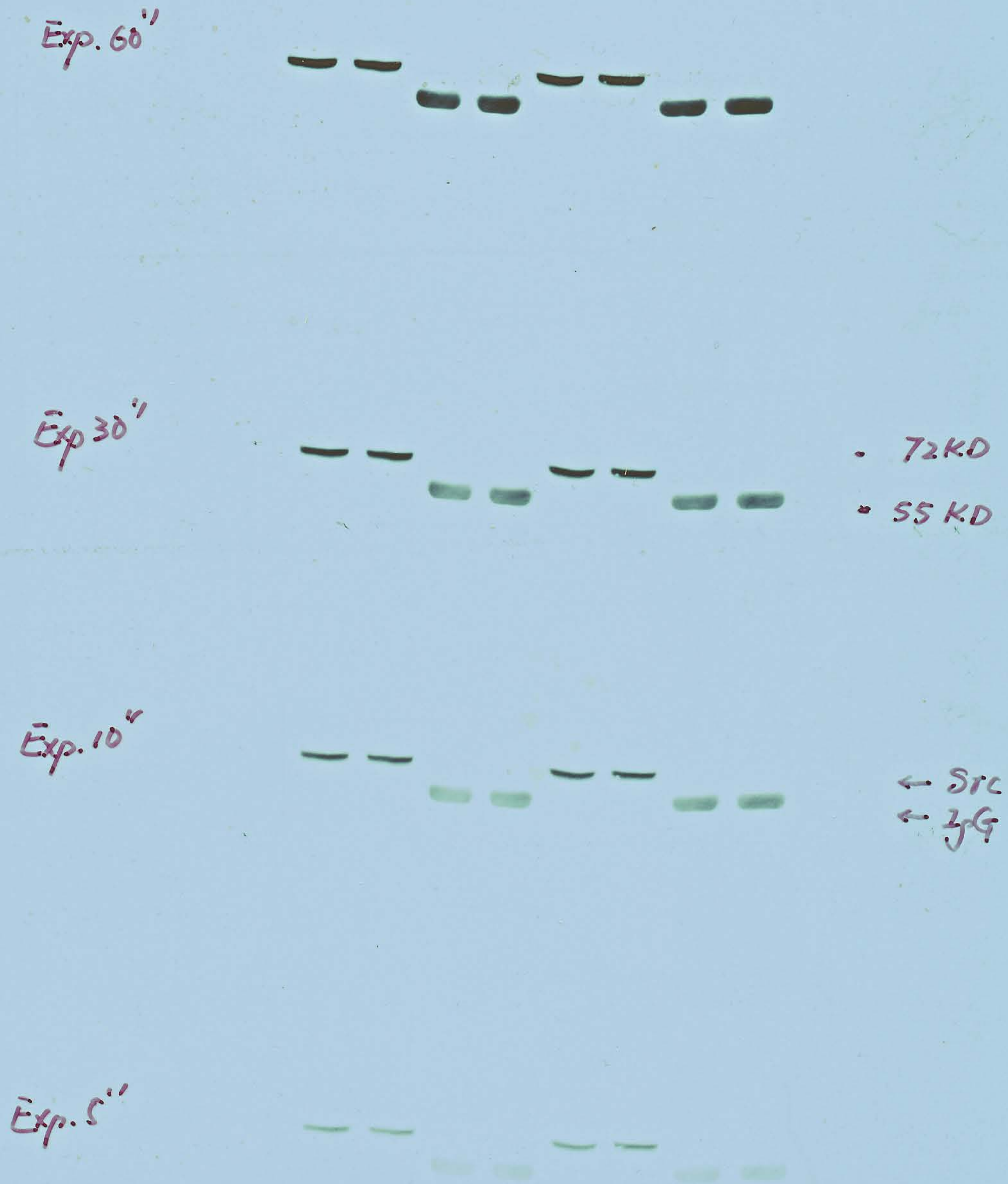
Exp. IP/FYND WB; IB/pSec^{Y411} -/+

Fig3A-1



9-25-09, m. 9/22/09 A F/F
Exp. 2P/FYN^{or} & WB; IB/Src

Fig3A-2



9-24-09, M9/22/09 A

Exp. IP/FYN & WB ; IB/FYN T/F

Fig3A-3

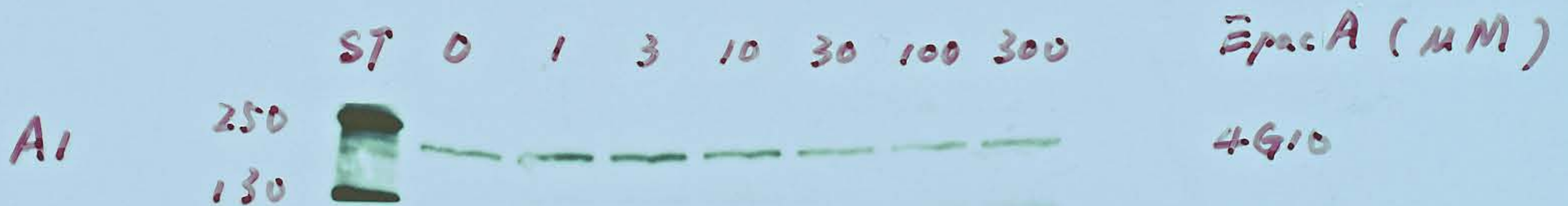


9.2.09 m9/1/09B(BI) & m9/1/09A(AI)

Exps BI: IP/NR2A, IB/4G10; AI: WB/4G10
-/- -/-



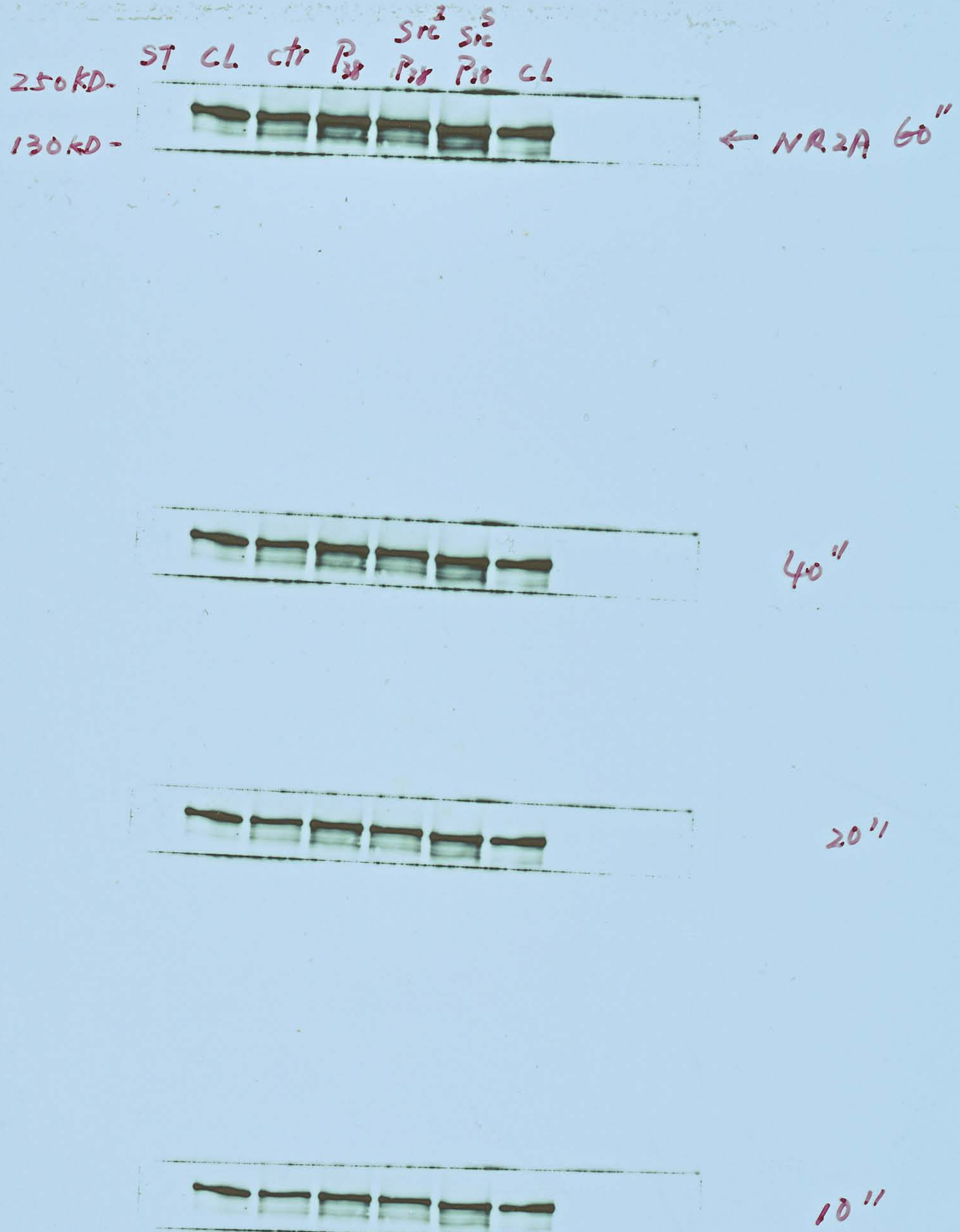
Fig3B-1



9.3.09. m 9/1109 B (B.) T/H

Exp. IP/NR2A, IB/NR2A

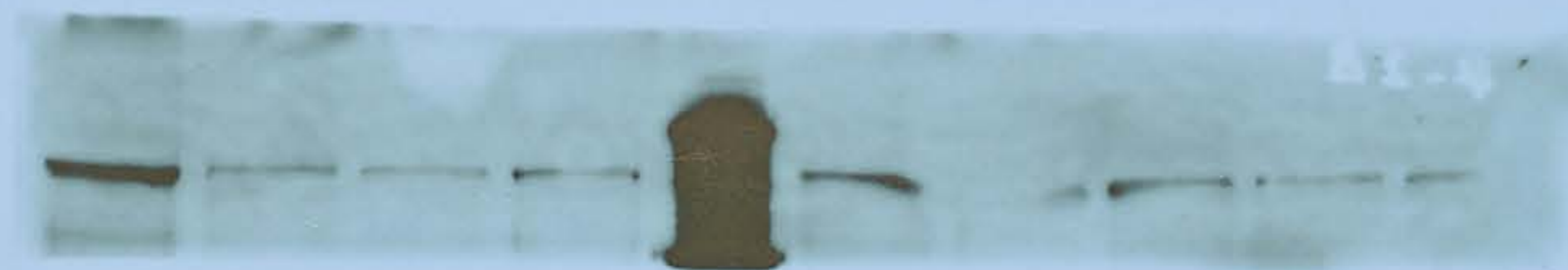
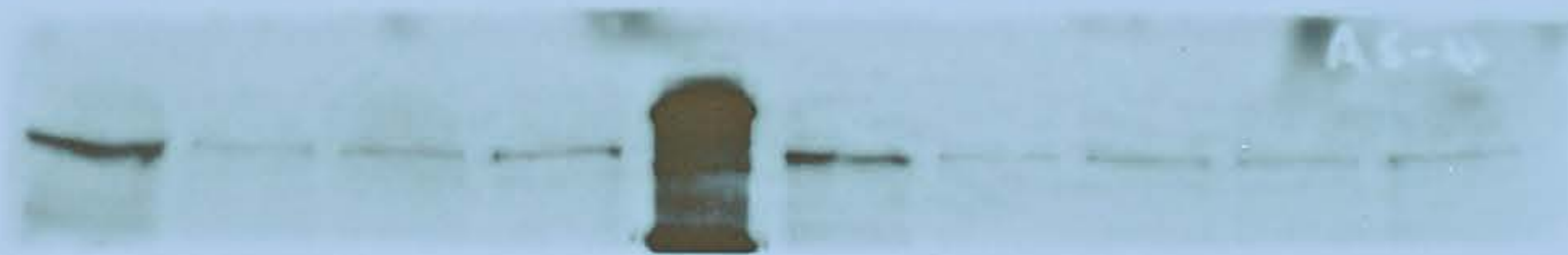
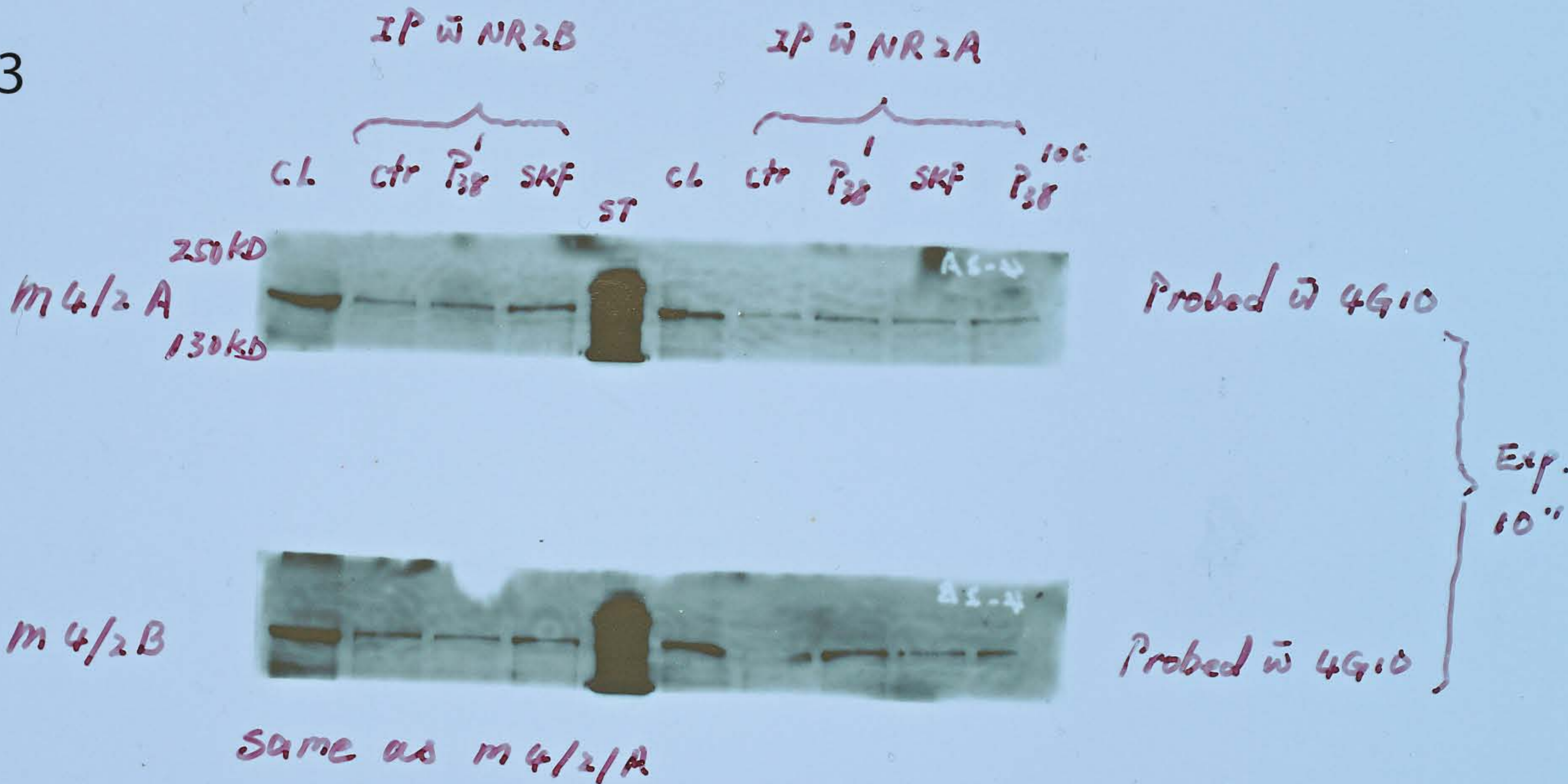
Fig3B-2



4-2-07 (m4/2A & m4/2B)

IP: NR2A; 2B: 4G10
NR2B

Fig3B-3

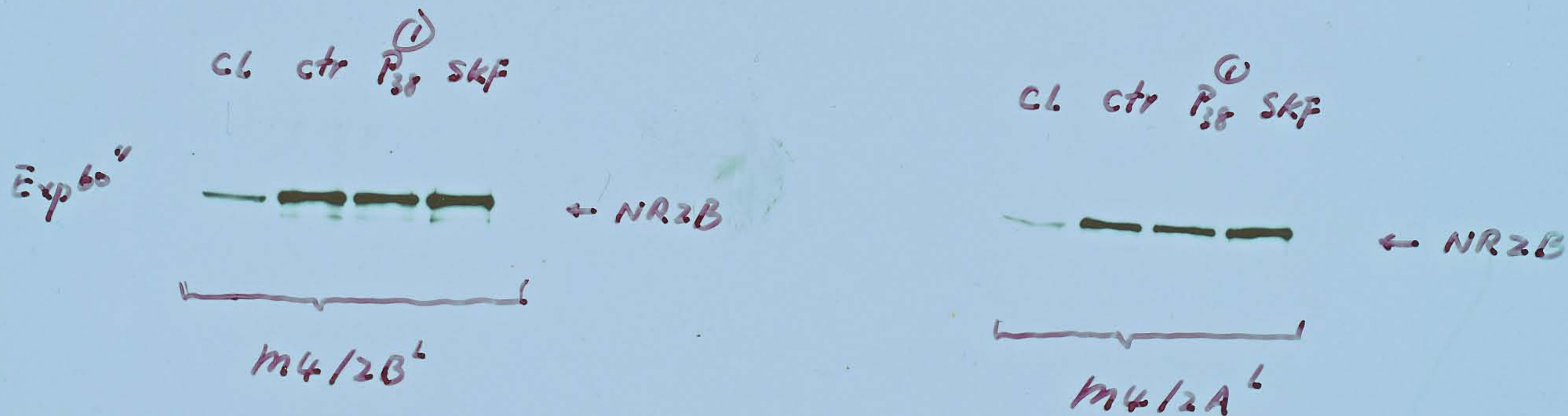


Exp. 5

4.3.09 (m4/2A & m4/2B)

IP: NR2B, IB: NR2B

Fig3B-4



S127109, mS125A, mS125109B^L



FYI-InPop
CL ctr skf skf



← NR2B

IP NR2B

IB NR2B

mS125109B^L



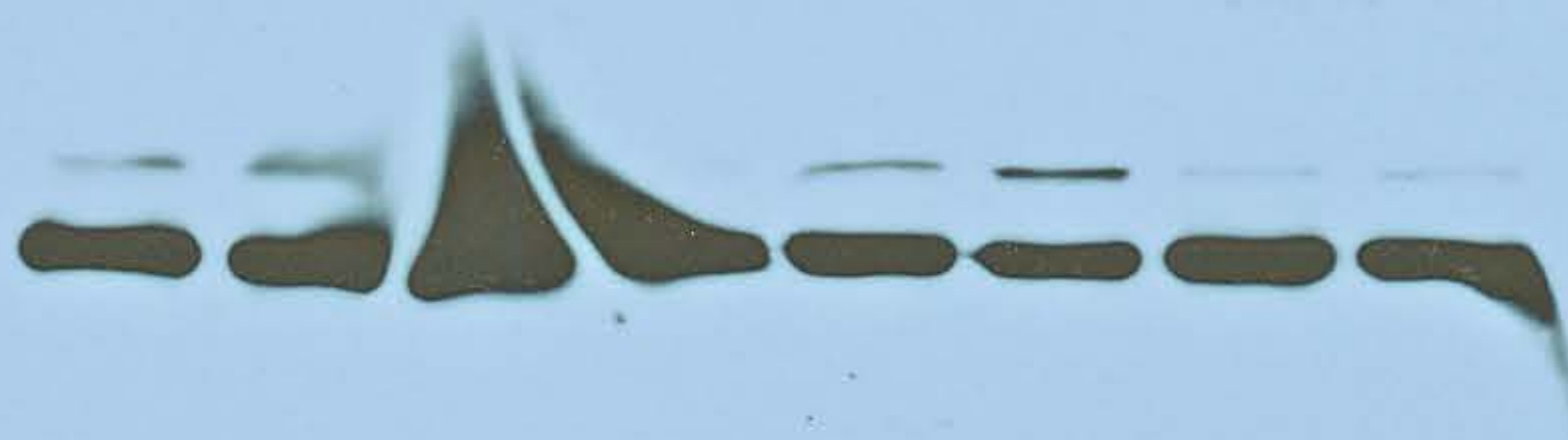
E50''

Fig3C-1

SCH Fyn/Pop
ctr skf skf skf

72KD -

55KD -



← pFyn^{Y420}
← IgG

IP FYN

IB: pSRC^{Y416}

mS125109A

E20''

5/26/09 MS/25/09A

Exp. IP w FYN
IB w FYN



Fig3C-2

4.25.09

M 4/22B, samples: 4/21/09
Exp. WB, Probed w: pSrc^{Y416}

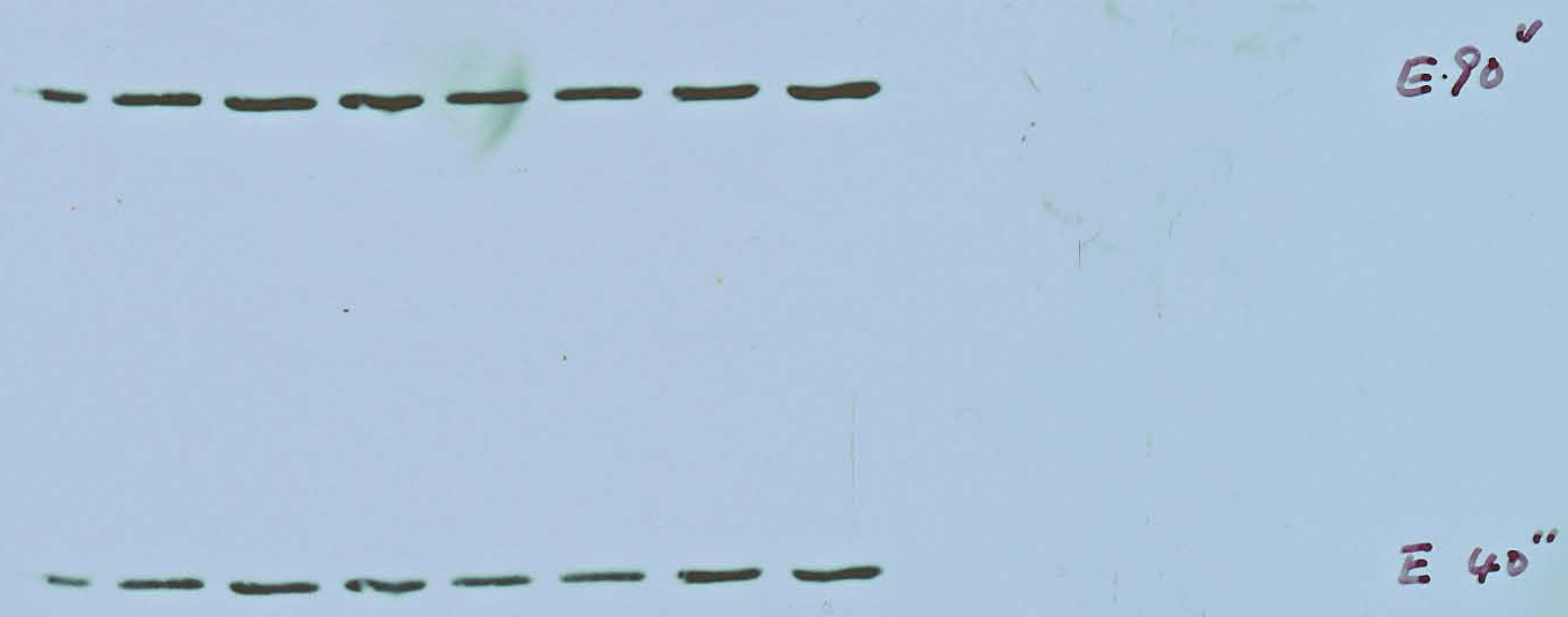
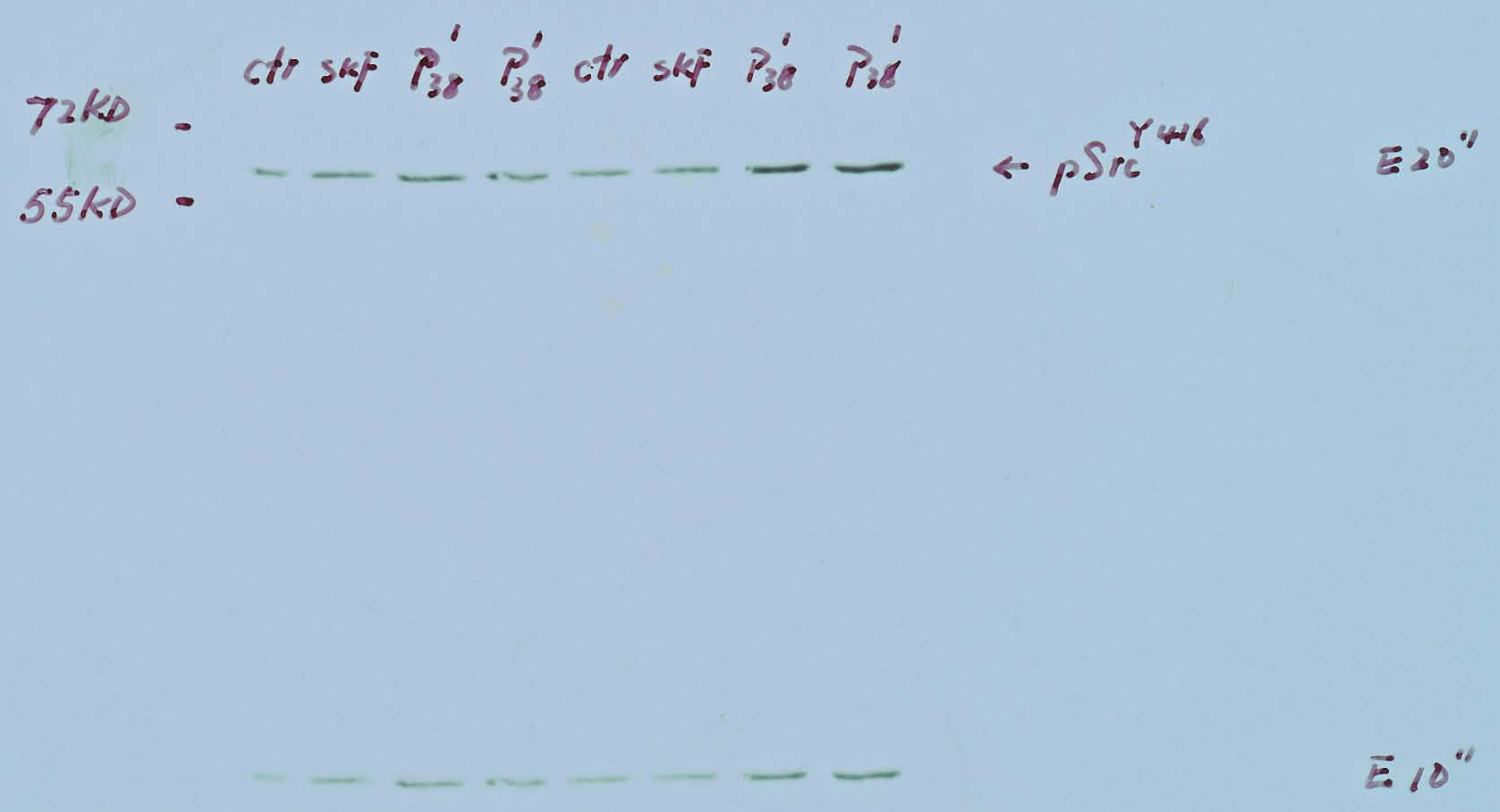


Fig3C-3



4-24-09

m 4/22B, sample - 4121109

Exp. WB; Ab. Total Src



E 90"



E 60"

Fig3C-4



E 30"



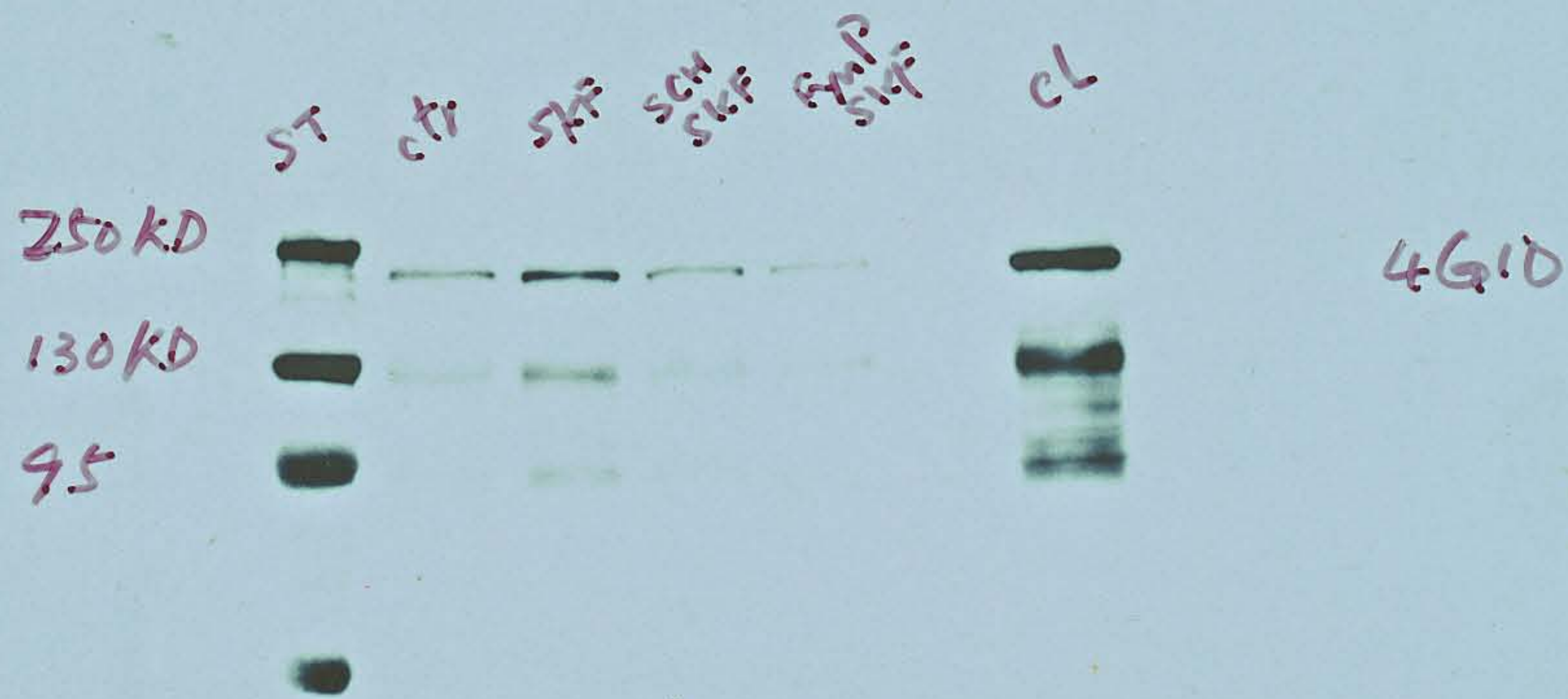
← Total Src

E 20"

10-9-09, m 10/869A, samples: 9-24-09

Exp: IP/NR2B, IB/4G10 -A

Fig3D-1



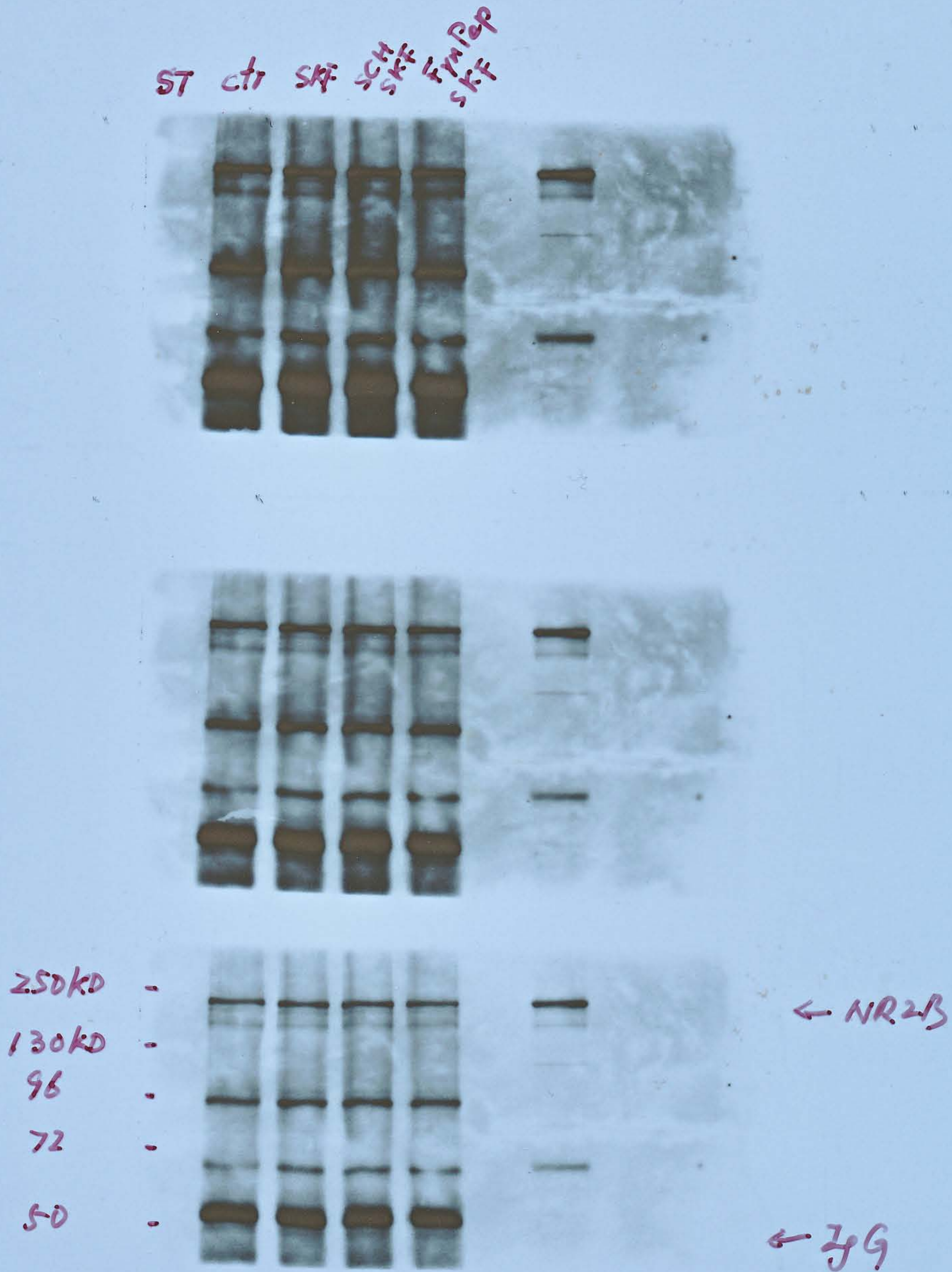
10-14-09 - m10/8/09A

Samples: 9-24-07

Exp: IP/NR2B, IB/NR2B

T/T

Fig3D-2



4/30/09 m4/29A

Samples - 4/21/09 (slices, 200 μ M), 200 μ l

Ab: NR2A (Enzo, # SA-425) 5 μ l

Exp. IP: NR2A; IB: 4G10

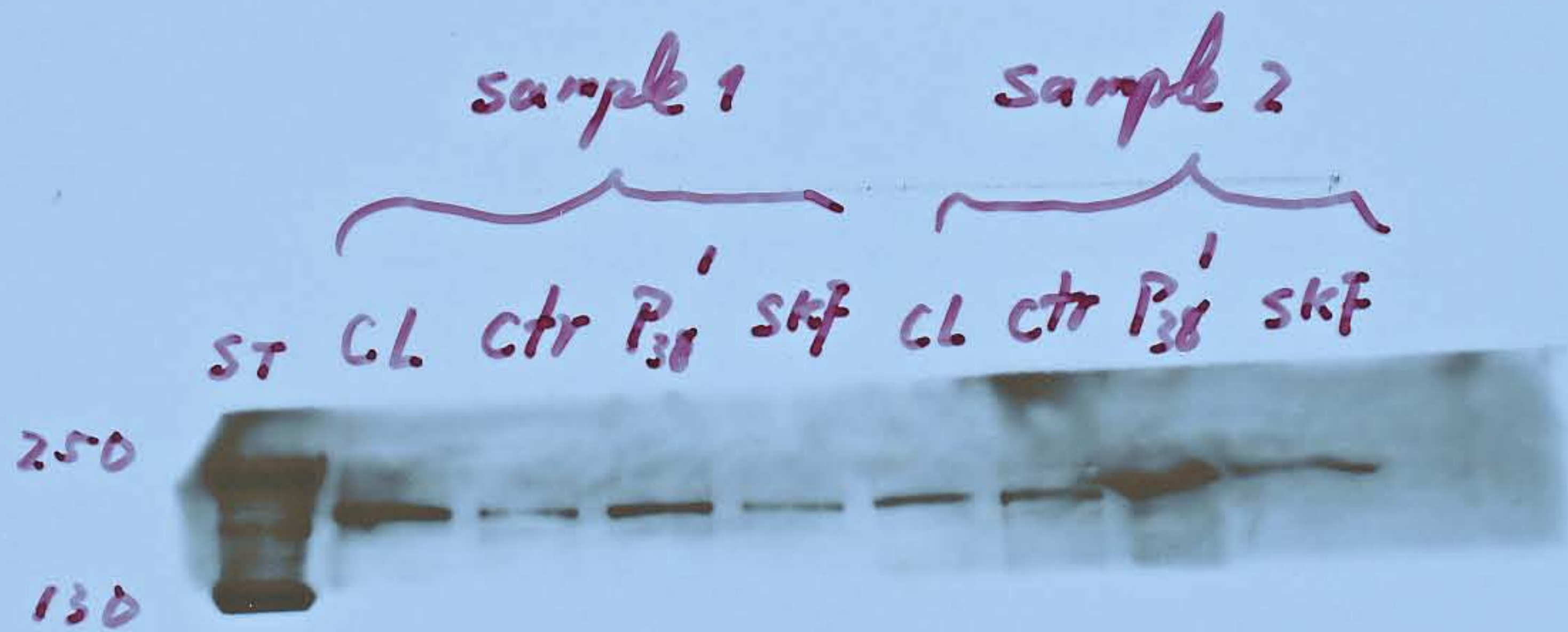


E 90"



E 60"

Fig3D-3



E 40"



E 20"

5/1/09 m4/29A^{2/2}, Exp: IP: NR2A; IB: NR2A

Fig3D-4

