

Supplemental Figure 1

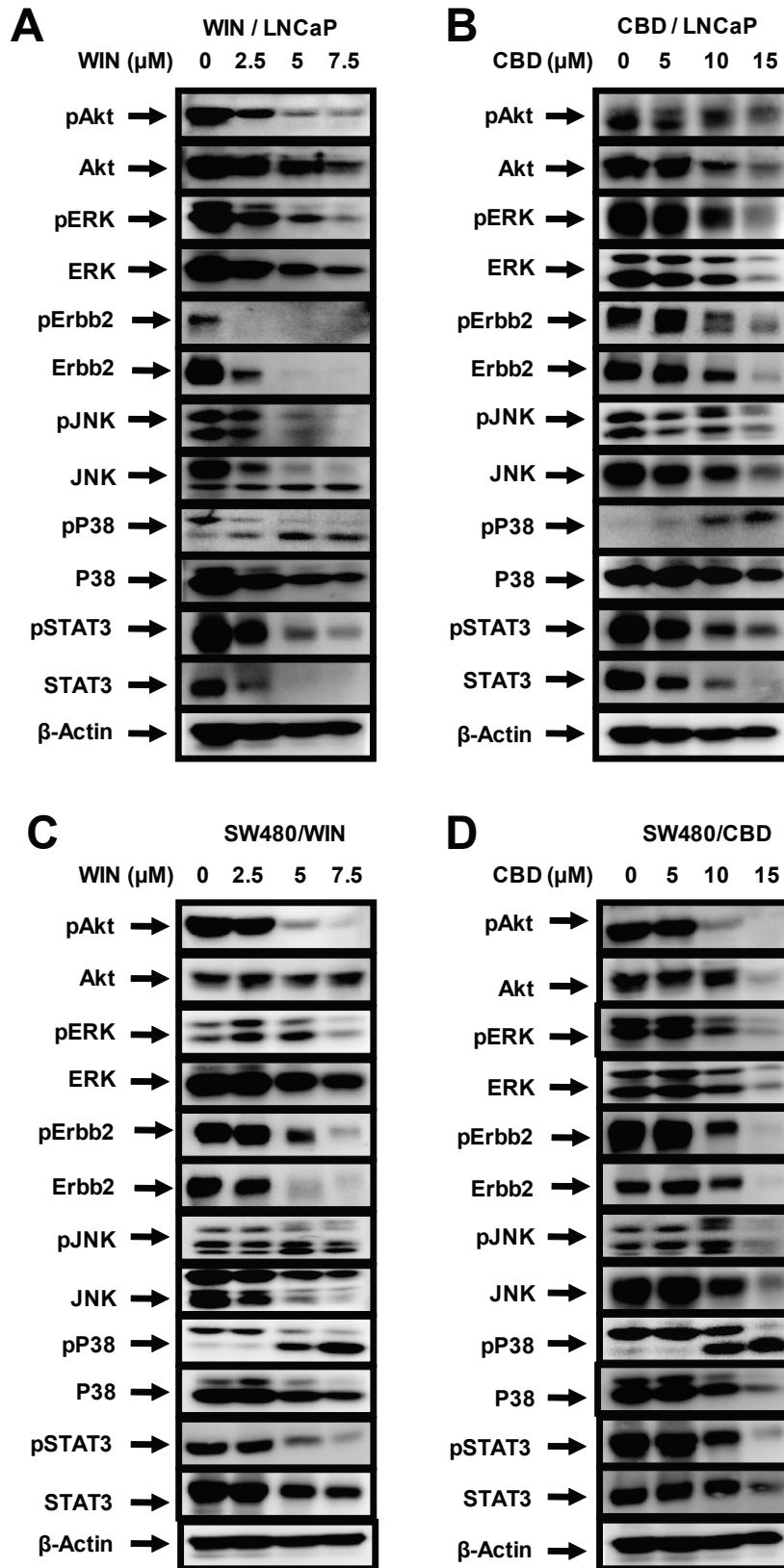


Figure S1. Effects of WIN and CBD on phospho and total kinase proteins in LNCaP (A, B) and SW480 (C, D) cells. Cells were treated with varying concentrations of WIN (2.5, 5 or 7.5 μM) and CBD (5, 10 or 15 μM) for 48 and 24 hr, respectively, and whole cell lysates were analyzed by western blot analysis as described in Materials and Methods. β -Actin served as a loading control for all western blots.