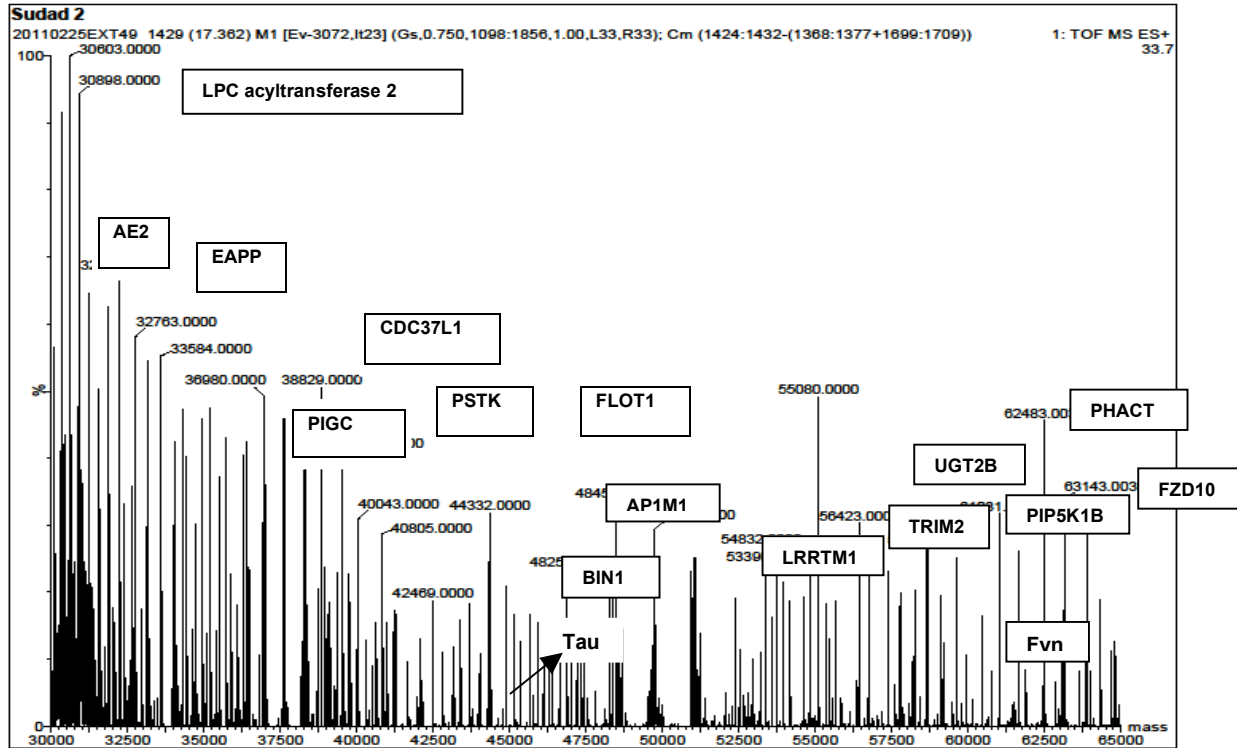


Supplemental Data



Supplemental Figure 1 Sample run from mass spectrometric analyses of exosomal fractions from MIC media performed in this study, showing a small subset of the identified proteins that copurified with tau (arrow) in exosomal fractions as described (see Figures 1-2). Some labels are omitted due to space considerations. A complete list of proteins identified so far is given below. Identification of proteins was based on mass measurement obtained on MS/MS: The masses were matched against calculated masses derived from the ExPASy digestion of protein databases using the Mascot peptide fragment identification program, which identifies database entries that have the largest number of matches. Identifications via this method have a 95% chance or greater of being correct.

1.	Activin receptor type-1B	31.	Microtubule-associated protein tau
2.	Alix (PDCD61P)	32.	Mitochondrial Rho GTPase 1
	Ankyrin repeat and sterile alpha motif domain-containing protein 1B	33.	Mitochondrial tRNA-specific 2-thiouridylase 1
3.	Annexin A7	34.	Mitogen-activated protein kinase kinase kinase 3
4.	Arf-GAP with coiled-coil, ANK repeat and PH domain-containing protein 3	35.	NADPH oxidase 1
5.	Arylsulfatase A	36.	Nucleoporin SEH1
6.	Beta-1,3-galactosyl-O-glycosyl-glycoprotein beta-1,6-N-acetylglucosaminyltransferase 6	37.	Peripherin
7.	Beta-arrestin-2	38.	Peroxisomal 3,2-trans-enoyl-CoA isomerase
8.	CaM kinase-like vesicle-associated protein	39.	Protein CASP
9.	CAP-Gly domain-containing linker protein 4	40.	Protein phosphatase 1 regulatory subunit 12C
10.	CDP-diacylglycerol-glycerol-3-phosphate 3 phosphatidyltransferase, mitochondrial	41.	Protein phosphatase 1J
11.	Collagen alpha-1(XXV) chain	42.	Proto-oncogene DBL
12.	Cytochrome c oxidase assembly protein COX15 homolog	43.	Rab GTPase-activating protein 1-like
13.	Cytoskeleton-associated protein 2-like	44.	Rab11 family-interacting protein 5
14.	Duffy antigen/chemokine receptor	45.	Rap guanine nucleotide exchange factor-like 1
15.	Dynein 1 intermediate chain 2 cytoplasmic11%	46.	Rap1 GTPase-activating protein 1
16.	Dynein heavy chain 6, axonemal	47.	Rap1 GTPase-activating protein 2
17.	E3 ubiquitin-protein ligase MGRN1	48.	Regulator of G-protein signaling 20
18.	EGF-containing fibulin-like extracellular matrix protein 1	49.	Serine/threonine-protein kinase H2
19.	F-box only protein 11	50.	Serine/threonine-protein kinase PAK 6
20.	Fibrinogen alpha chain	51.	Serine/threonine-protein phosphatase 2A 55 kDa regulatory subunit B beta isoform
21.	Flotillin 1	52.	SH3 domain-containing kinase-binding protein 1
22.	Frizzled-10	53.	Sodium-coupled monocarboxylate transporter 2
23.	Gliomedin	54.	Sterol regulatory element-binding protein 1
24.	Glycylpeptide N-tetradecanoyltransferase 1	55.	Succinyl-CoA ligase [ADP-forming] subunit beta, mitochondrial
25.	Hsc70-interacting protein (CHIP)	56.	TBC1 domain Rab family member 14
26.	Keratin, type II cytoskeletal 3	57.	Tetratricopeptide repeat protein 30A
27.	KIF1-binding protein	58.	TGF-beta-activated kinase 1 and MAP3K7-binding protein 2
28.	Leucine-rich repeat-containing protein C10orf92	59.	Tight junction-associated protein 1
29.	Liprin-alpha-4	60.	Tomoregulin-2
30.	Mannan-binding lectin serine protease 2	61.	Tripartite motif-containing protein 2
		62.	Tubulin beta-2C chain
		63.	Tubulin gamma-1 chain
		64.	Tyrosine-protein kinase Fyn

Supplemental Table 1 List of proteins identified in exosomal fractions of M1C media (Figure 1) that were enriched in secreted exosomes. Only proteins that were individually identified by Mascot 60% or more of the time by mass spectrometric analysis are shown. All identifications were at a level of at least 95% confidence.