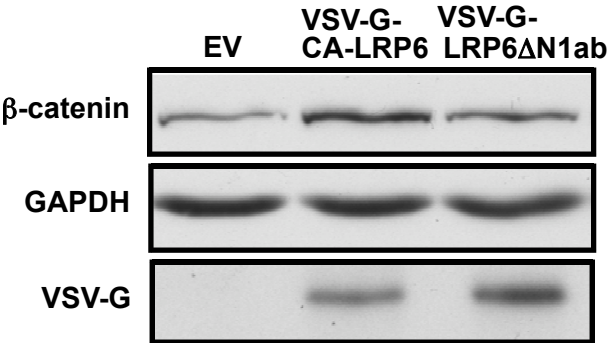
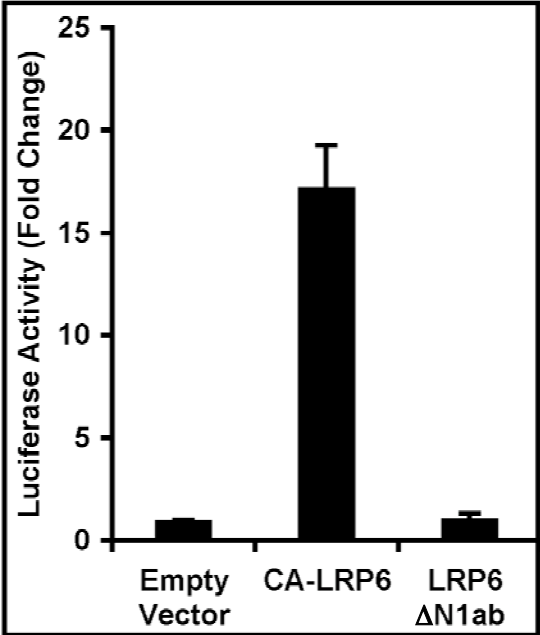


Supplemental Figure 8

A



B



Supplemental Figure S8. Constitutively active LRP6 activates downstream Wnt signaling.

Expression of VSV-G tagged constitutively active LRP6 (VSV-G-CA-LRP6), but not the nonfunctional, unphosphorylatable VSV-G-LRP6 Δ N1ab fragment, elevated β -catenin levels (A) and activated the TOPFLASH Wnt reporter (B) in 293T OT Luciferase cells. Error bars represent standard error of the mean.