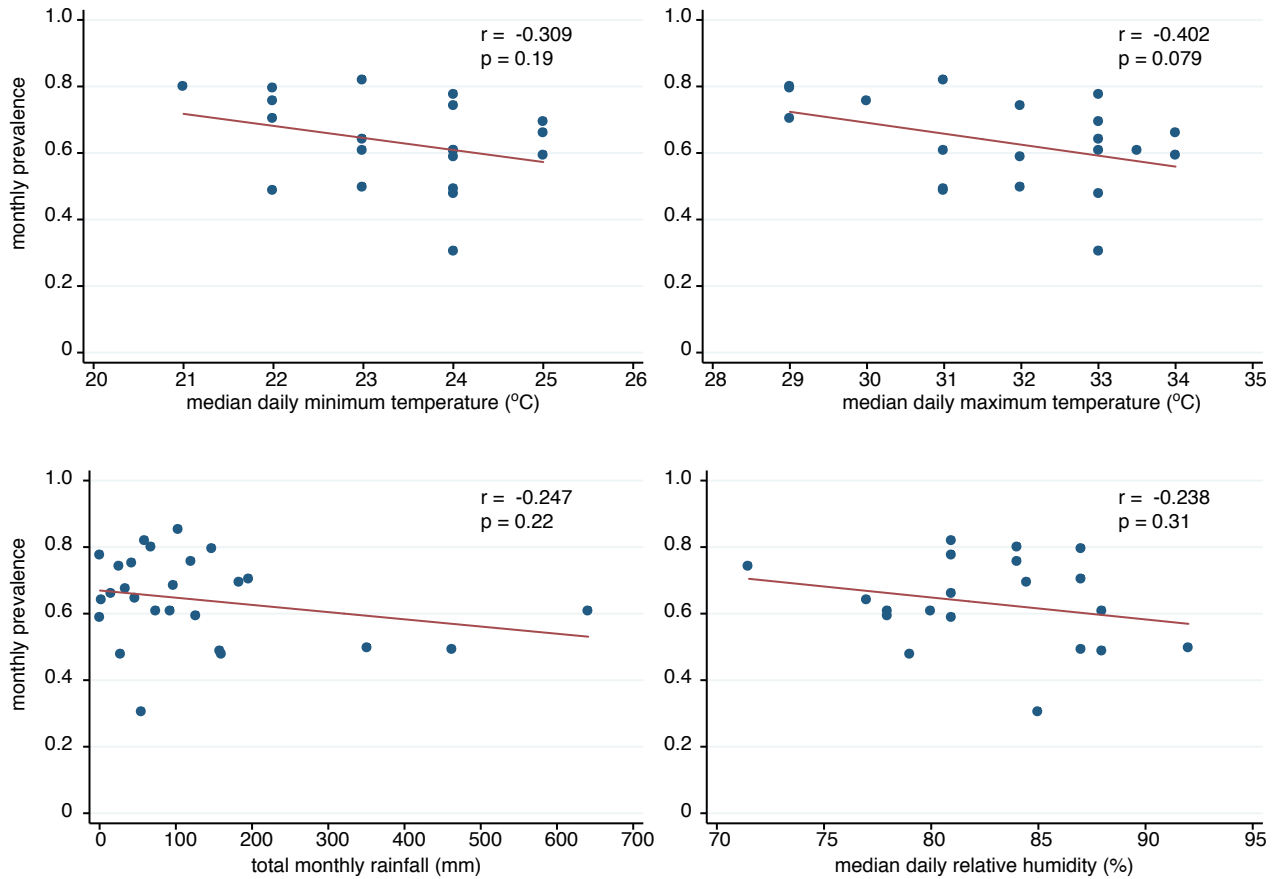


**Figure S1. Correlation of monthly pneumococcal carriage prevalence with monthly estimates of meteorological variables.**



The figures show the scatter of monthly prevalence of carriage of *S. pneumoniae* in the population based sample of children aged 3-59 months against the monthly summaries of weather variables measured on a daily basis. Data on weather were available for the 26 study months (daily rainfall) or for 20 months (daily minimum/maximum temperature and daily relative humidity.)