

Figure S5

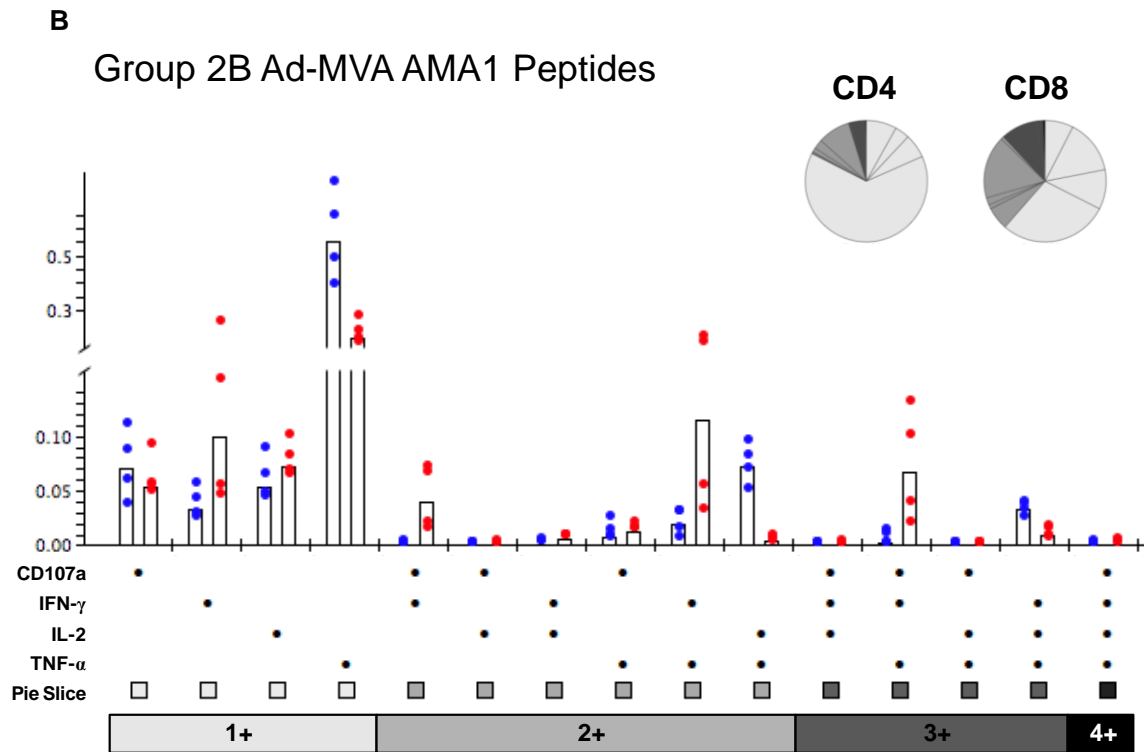
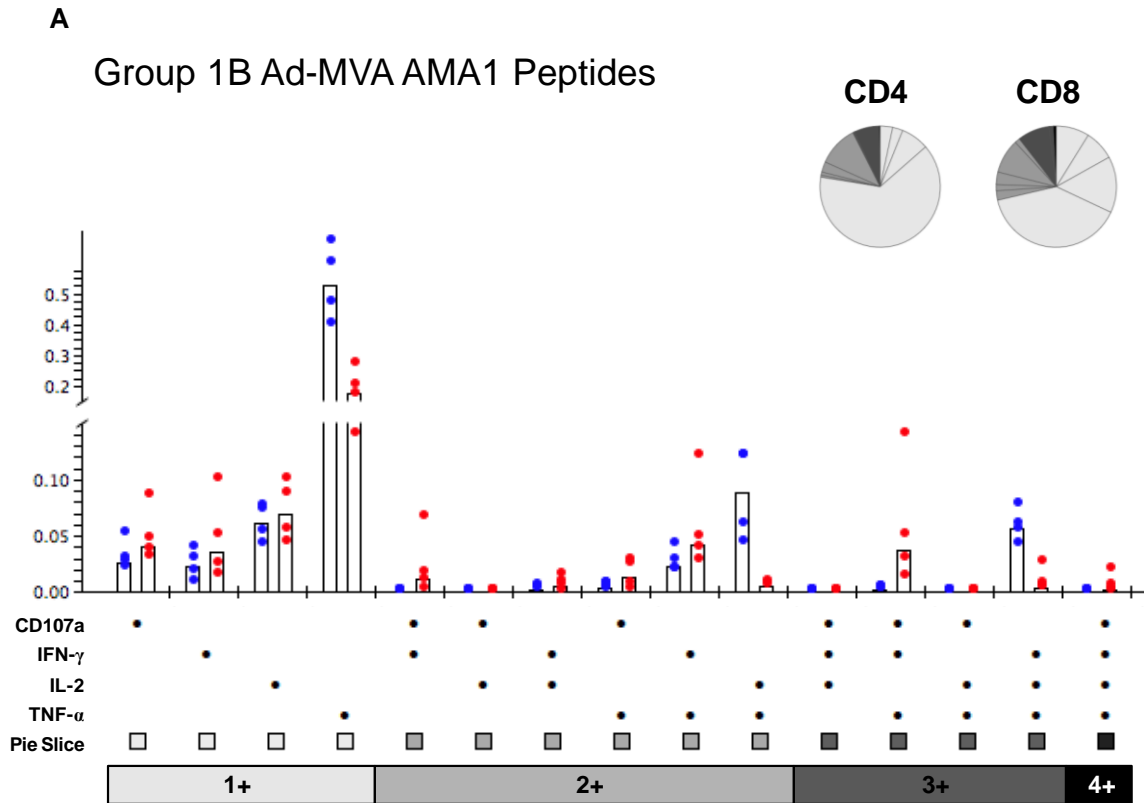


Figure S5. T cell multi-functionality following ChAd63-MVA AMA1 immunization. The multi-functionality of the CD3⁺ T cell responses was assessed by polychromatic flow cytometry and ICS. Frozen PBMCs from day 84 were re-stimulated with a pool of AMA1 peptides and cells were stained as described. Gating strategy and representative plots are shown in Figure S6. The multi-functional compositions of the T cell responses following ChAd63-MVA immunization are shown for **(A)** CD4⁺ and CD8⁺ T cells in Group 1B following AMA1 peptide re-stimulation, and **(B)** CD4⁺ and CD8⁺ T cells in Group 2B following AMA1 peptide re-stimulation. Responses are grouped and colour-coded according to the CD4⁺ and CD8⁺ subsets, and the number of functions detected for each T cell population. Individual data points and median percentage of the parent CD4⁺ or CD8⁺ response (open bars) are shown for each of the functional populations indicated on the x-axis. The pie charts summarize the fractions of AMA1-specific CD4⁺ or CD8⁺ T cells that are positive for a given number of functions.