

Supplemental Information

Figure S1. Time-course analysis of p63 or MYC expression after siP63 or siMYC transfection. (A, B) p63 expression levels were quantified using qRT-PCR (A) and western blots (B) over the course of 10 days. (C) MYC expression levels in p63-knockdown cells were quantified using qRT-PCR. (D) MYC expression levels in siMYC were quantified by qRT-PCR and western blots (E) over the course of 10 days. Samples were extracted every 2 days from day 2 to day 10.

Figure S2. MYC expression in p63-depleted keratinocytes in mRNA level (A) and protein level (B). BR means biological replicate.

Figure S3. Genetic networks regulating cell cycle (A) and cell migration and adhesion (B) were generated by Ingenuity Pathway Analysis (IPA) for siMYC. Same networks as identified in siP63.

Figure S4. Data mining of MYC expression in GEO. Other MYC expression data were found in GEO, with p63 knockdown in several epithelial cell lines.

Figure S5. Ectopic expression of TAp63 γ or Δ Np63 α was not able to upregulate MYC expression. HaCaT cells were transfected with plasmids containing the ORF of TAp63 γ , Δ Np63 α , or GFP (control). 48 hours post-transfection, RNA was extracted and measured by qRT-PCR.

Figure S6. Gene Ontology (GO) analysis for the 546 common genes in Fig. 5a. (A-D) GO terms were significantly enriched in downregulated genes in the green columns (A, siMYC; B, siP63) or in upregulated genes in the red columns (C, siMYC; D, siP63). Significantly enriched GO

terms are represented in a histogram as the $-\log(p < 0.05)$, Fisher's exact test). The numbers indicated above columns represent the number of genes classified into each category. The gray dashed lines represent the significance threshold.

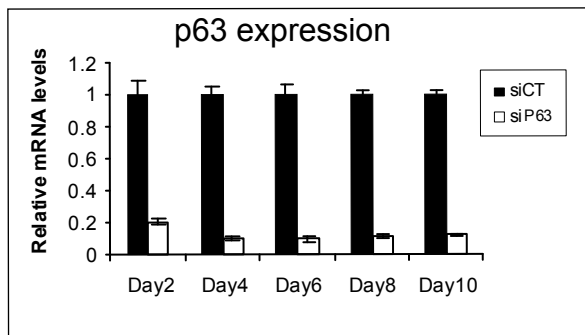
Table S1. List of all PCR primers used in this study.

Table S2. List of genes differentially expressed in siMYC or siP63 transcriptome analysis.

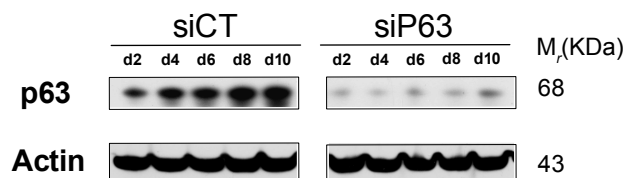
Table S3. List of common genes modulated inversely in the siMYC and siP63 transcriptomes.

Figure S1

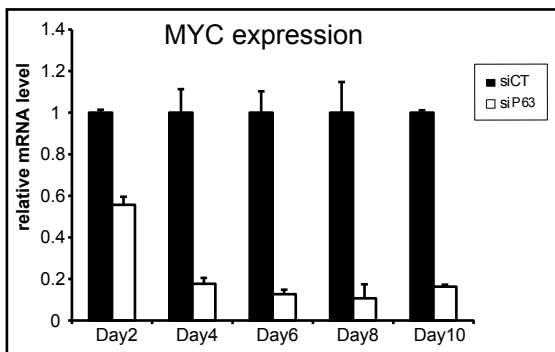
A



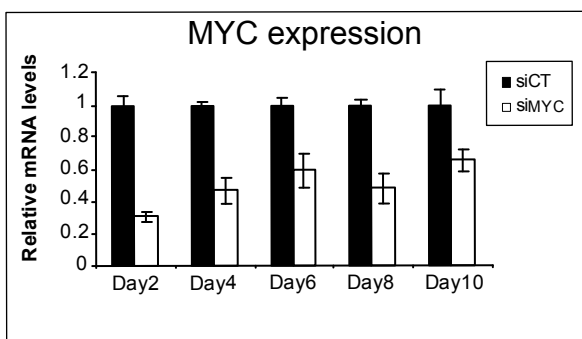
B



C



D



E

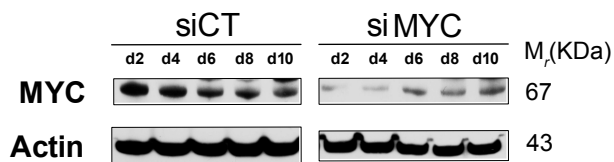
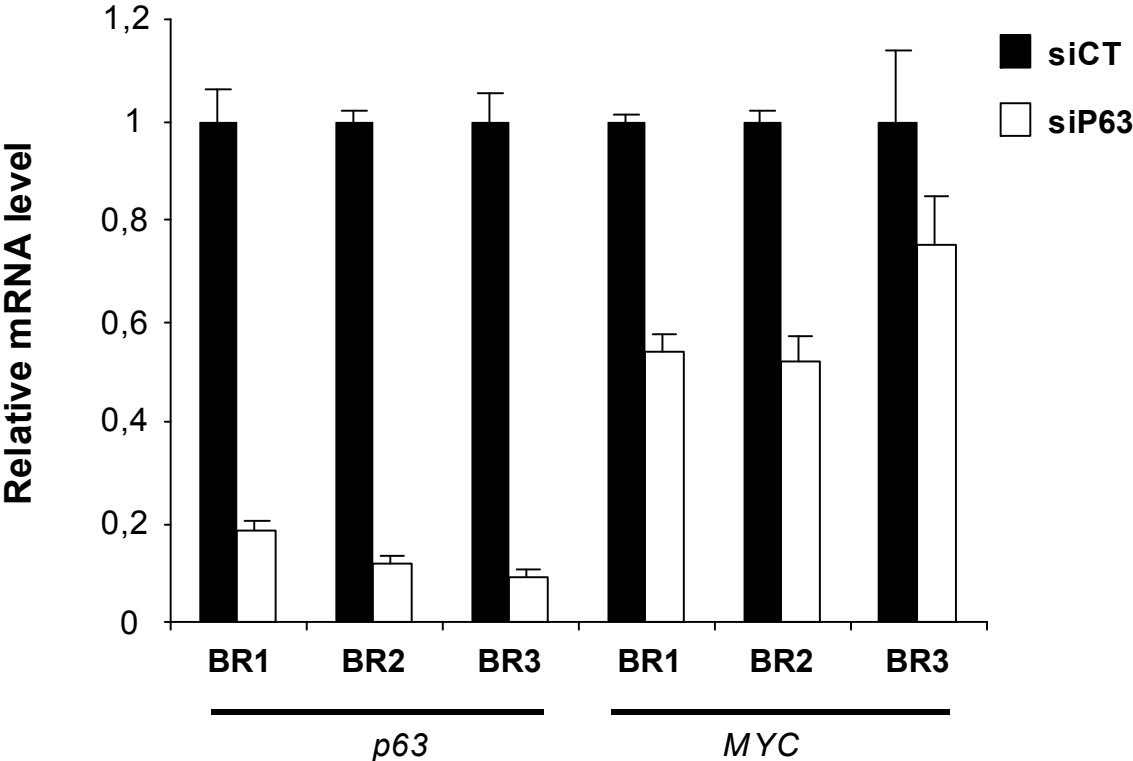


Figure S2

A



B

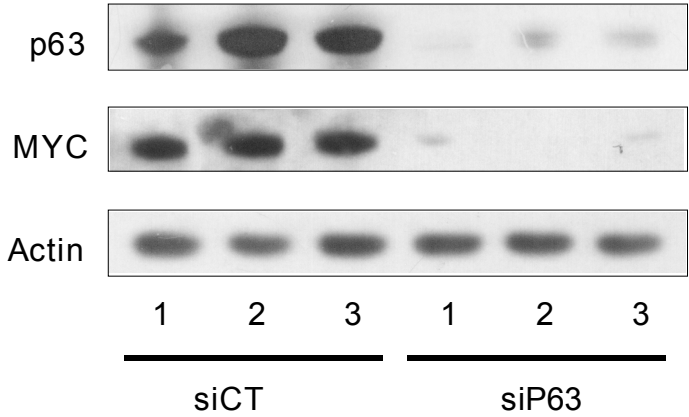
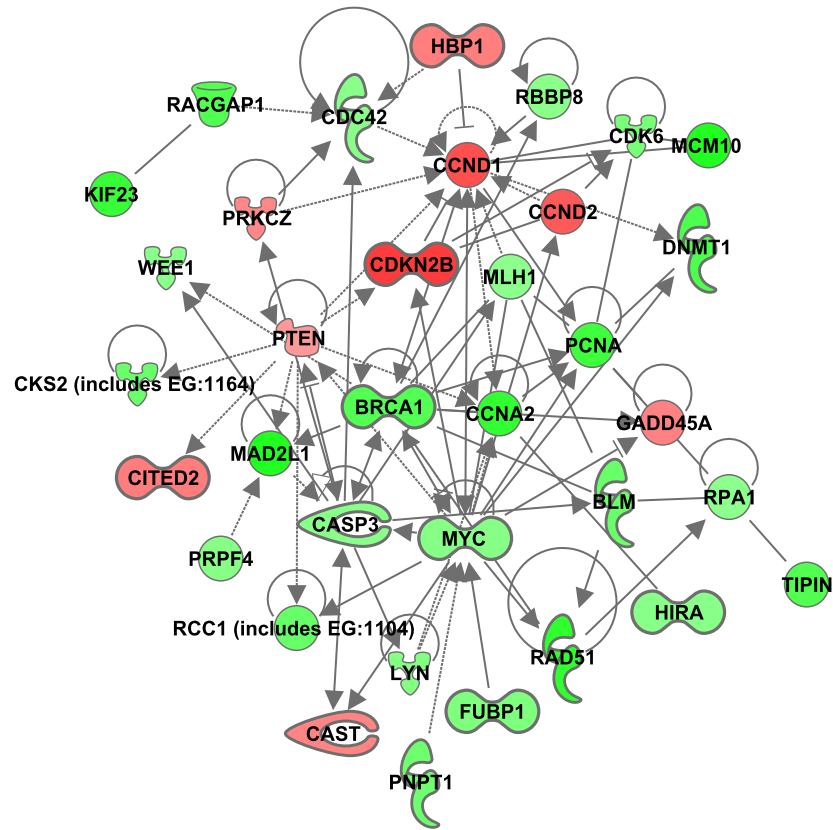


Figure S3

A

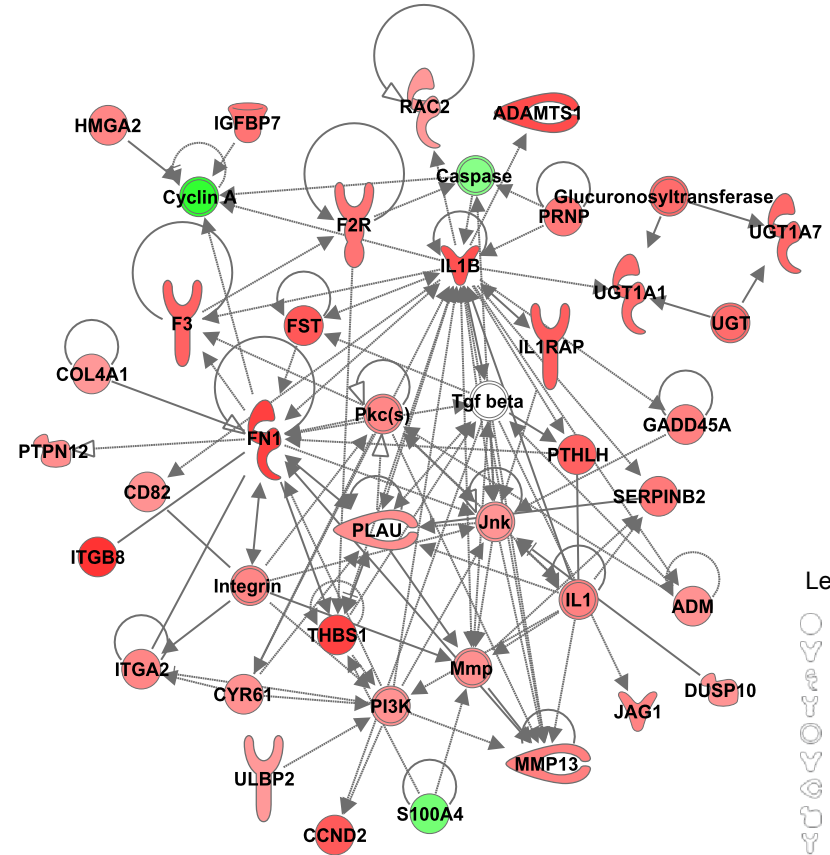
siMYC



Cell Cycle

B

siMYC

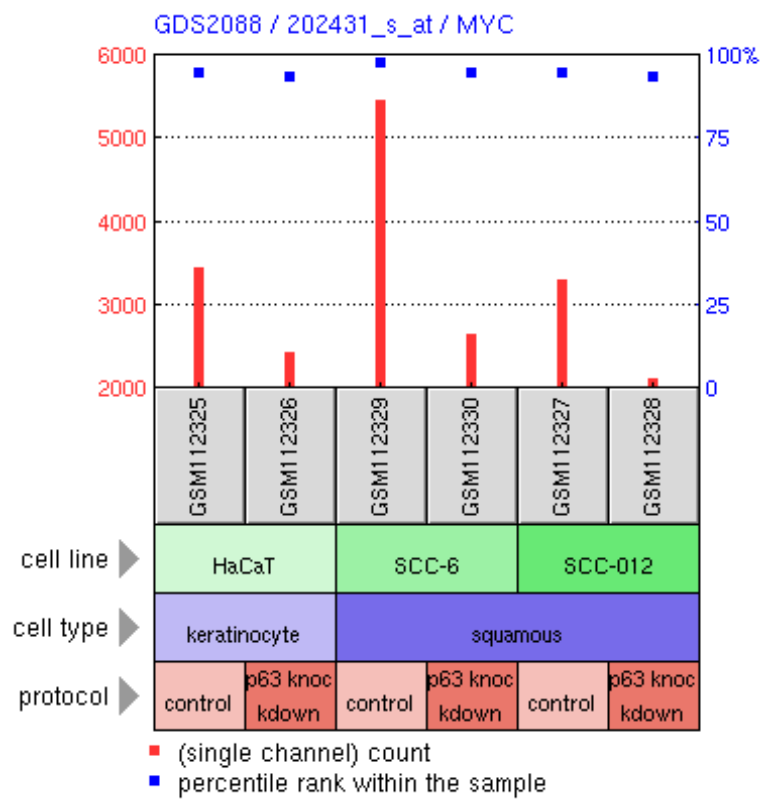


Cell migration/adhesion

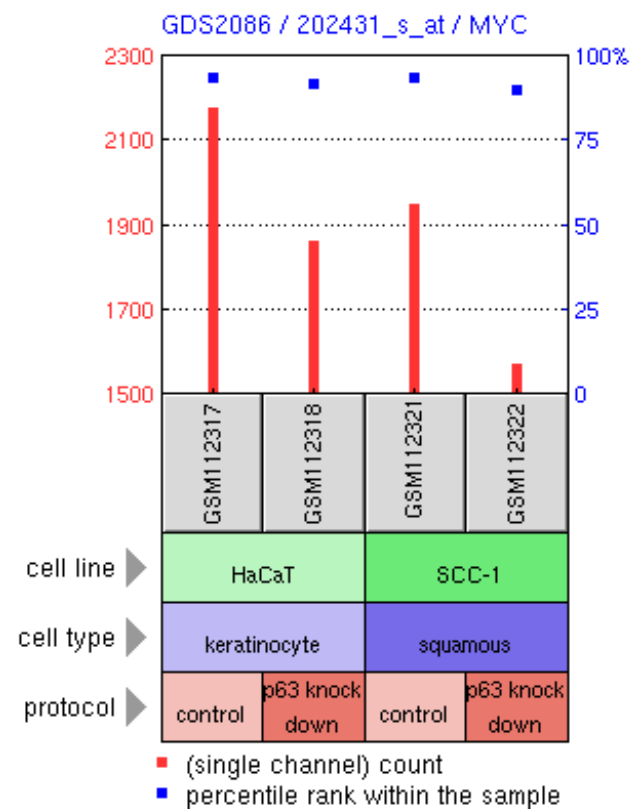
Legends

- Complex
- Cytokine/Growth Factor
- Enzyme
- G-protein Coupled Receptor
- Group/Complex/Other
- Growth factor
- Peptidase
- Phosphatase
- Transmembrane Receptor
- Transporter
- Unknown
- Direct Interactions
- Indirect Interactions

Figure S4



GSM112325: HaCaT cells transfected with control vector
 GSM112326: HaCaT cells transfected with p63 siRNA
 GSM112329: SCC-6 cells transfected with control vector
 GSM112330: SCC-6 cells transfected with p63 siRNA
 GSM112327: SCC-012 cells transfected with control vector
 GSM112328: SCC-012 cells transfected with p63 siRNA



GSM112317: HaCaT RG cells transfected with control vector 1
 GSM112318: HaCaT RG cells transfected with p63 siRNA 1
 GSM112321: SCC-1 cells transfected with control vector 1
 GSM112322: SCC-1 cells transfected with p63 siRNA 1

Figure S5

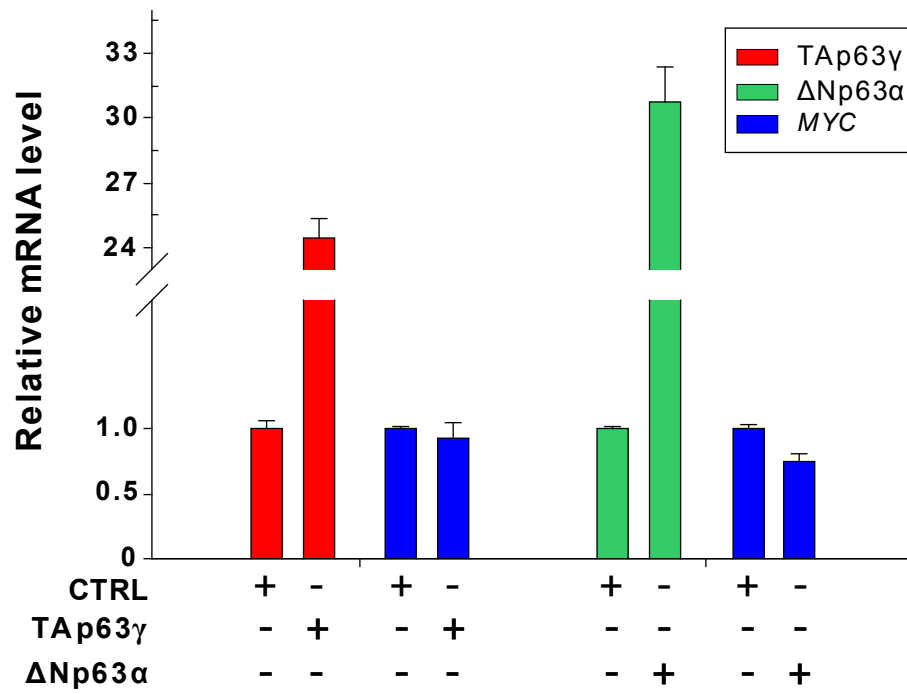


Figure S6

