

SUPPLEMENTARY DATA

FIG. S1. PCR amplification of the E180 motif in *Medicago carstiensis* (lane 1), *Trigonella rechingeri* (lane 2), and *M. arborea* (lane 3). Negative PCR results from *M. boratoniana* (lane 4), *M. blancheana* (lane 5), and *M. coronata* (lane 6) are also shown. The 100-bp molecular size ladder is shown in the left lane.

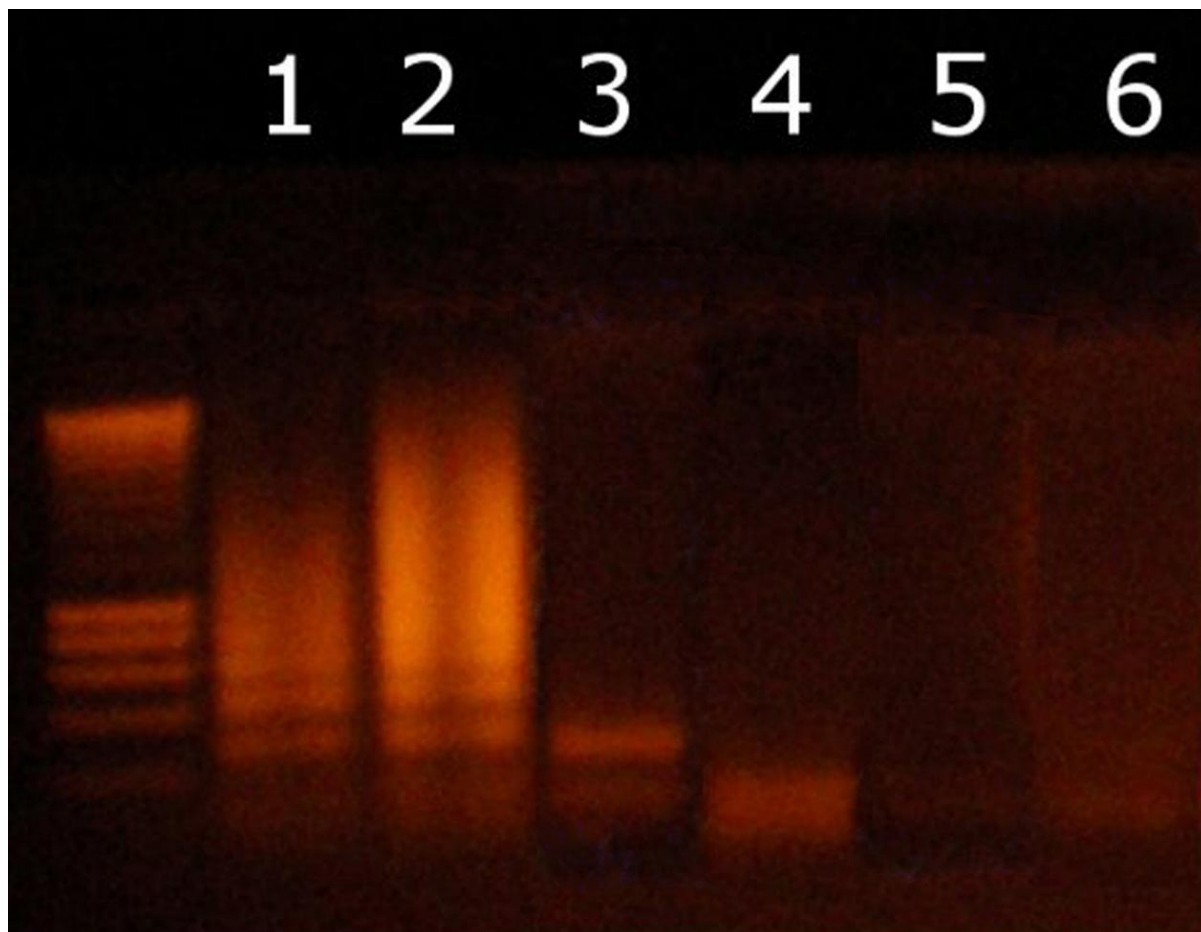


FIG. S2. Co-localization of the E180 satellite DNA and constitutive heterochromatin (C-banding) in pachytene cells of *M. citrina*. (A) FISH signals located at terminal knobs; (B) C-banding reveals weak C-bands present at the faint terminal knobs (arrows) and prominent bands associated with NOR loci (arrowheads). Scale bars = 10 μ m.

