

## SUPPLEMENTARY DATA

FIG. S1. Visual representation of the character states implemented by the gap weighting method of Thiele (1993) based on the 42 *Impatiens* species showing a wood cylinder at least at the base of their stems. Bars indicate the number of species within one character state. Based on this graph, a division of the habit character into four character states (herbaceous, 'woody' herbs, slightly woody, and truly woody) or two character states (herbaceous and woody) is possible.

**Distribution of the MorphoCode character states after gap weighting (N = 26) for all the *Impatiens* species with at least a wood cylinder at the base of the stem**

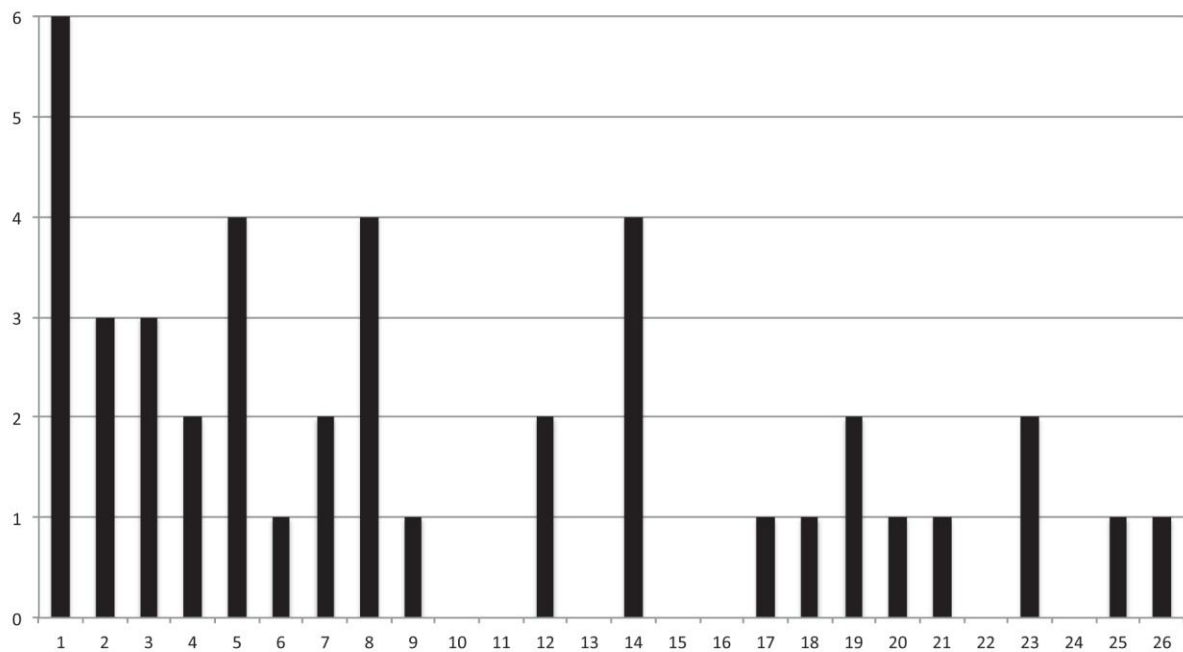


FIG. S2. Continuously decreasing or flat length-on-age curves for vessel elements of the woody *Impatiens flaccida*, *I. namchabarwensis* and *I. nianiamensis* based on maceration slides taken at each millimeter between pith and cambium. These curves are representative of secondarily woody species.

