

Supporting Information

Complications from Dual Roles of Sodium Hydride as a Base and as a Reducing Agent

Dusan Heseck, Mijoon Lee, Bruce C. Noll, Jed F. Fisher and Shahriar Mobashery*

Department of Chemistry and Biochemistry, University of Notre Dame, Notre Dame, IN 46556

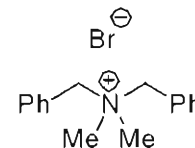
Contents

¹ H NMR of compound 3	S2
¹³ C NMR of compound 3	S3
¹ H NMR of compound 3-D	S4
¹³ C NMR of compound 3-D	S5
¹ H NMR of compound 7	S6
H-H COSY of compound 7	S7
¹³ C NMR of compound 7	S8
Dept Spectrum of compound 7	S9
H-C Hetcor of compound 7	S10
¹ H NMR of compound 9	S11
¹³ C NMR of compound 9	S12
Dept Spectrum of compound 9	S13
¹ H NMR of compound 8-D	S14
¹³ C NMR of compound 8-D	S15
¹³ C NMR of compound 8-D (expanded)	S16
¹ H NMR of compound 9-D	S17
¹³ C NMR of compound 9-D	S18
¹³ C NMR of compound 9-D (expanded)	S19

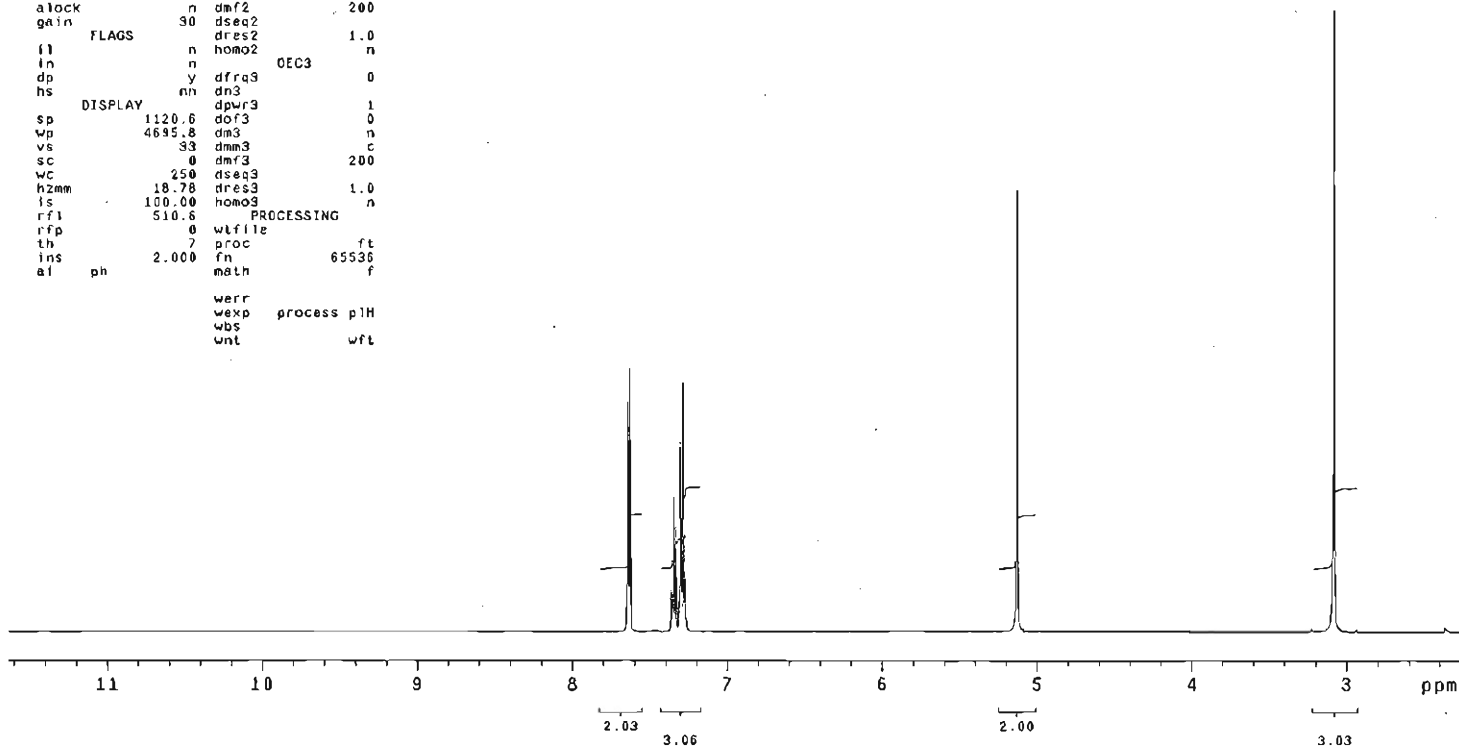
DHL-3_7

exp1 s2pu1

SAMPLE		DEC. & VT	
date	Nov 9 2007	dfrq	499.864
solvent	CDC13	dn	H1
file	exp	dpwr	30
ACQUISITION		uof	0
sfrq	499.864	dm	nnn
tn	H1	dmm	c
at	5.016	dmf	200
np	65536	dseq	
sw	6533.3	dres	1.0
fb	4000	homo	n
bs	4		
tpwr	61	dfrq2	DEC2 0
pw	13.5	dn2	
d1	0.100	dpwr2	1
tof	269.9	dof2	0
nt	8	dm2	n
ct	8	dmm2	c
alock	n	dmf2	200
gain	30	dseq2	
FLAGS		dres2	1.0
fl	n	homo2	n
tn	n		
dp	y	dfrq3	DEC3 0
hs	nn	dn3	
DISPLAY		dpwr3	1
sp	1120.6	dof3	0
wp	4695.8	dm3	n
vs	33	dmm3	c
sc	0	dmf3	200
wc	250	dseq3	
h2mm	18.78	dres3	1.0
fs	100.00	homo3	n
rfl	510.6	PROCESSING	
rfp	0	wf file	
th	7	proc	ft
ins	2.000	fn	65536
af	ph	math	f
		werr	
		wexp	process pH
		wbs	
		wnt	wft



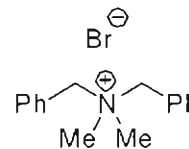
3



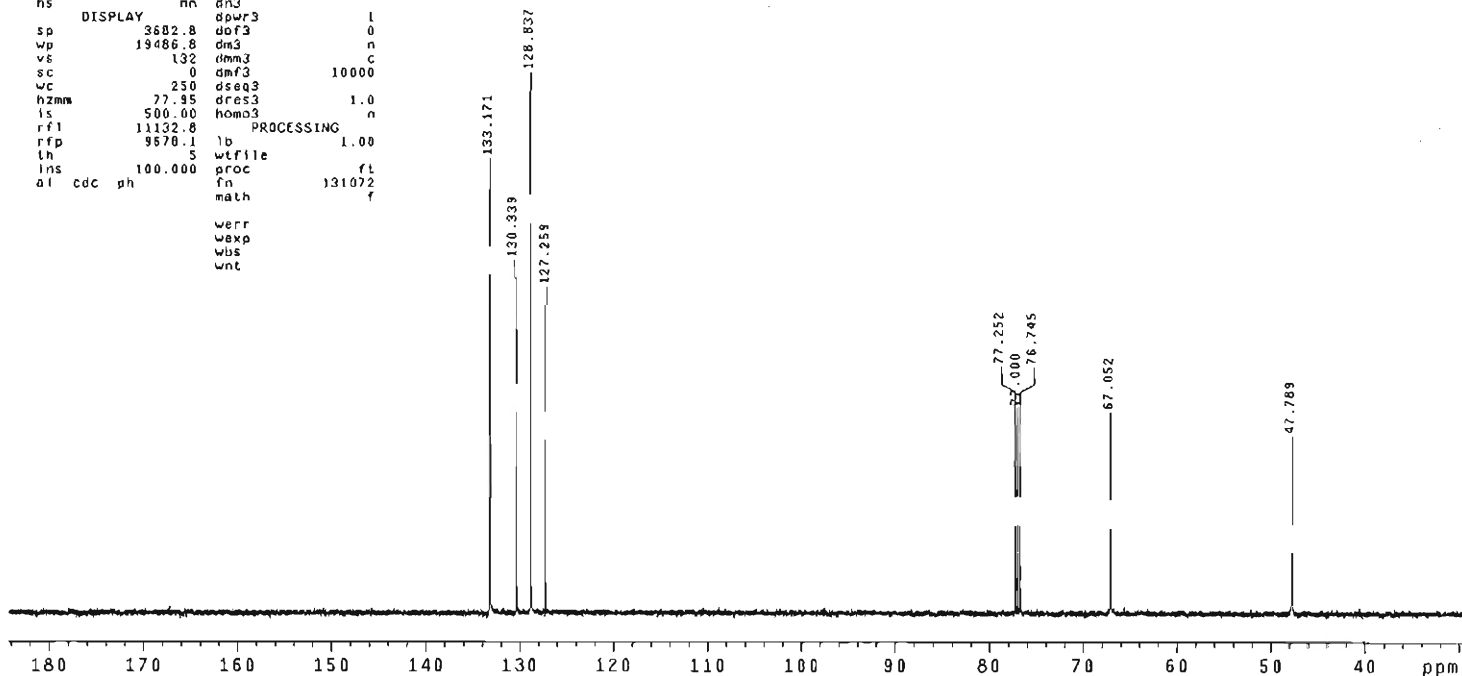
DHL-3_7

exp2 s2pu1

SAMPLE		REC. & VT	
date	Nov 9 2007	dfrq	499.864
solvent	CDC13	dn	HL
file	exp	dpr	40
ACQUISITION			
sfrq	125.702	dof	0
ln	C13	dmm	W
al	1.215	dmf	8787.35
np	65536	dseq	
sw	26963.3	dres	1.0
fb	15000	homo	n
bs	4	DEC2	
tpwr	52	dfrq2	0
pw	10.2	dn2	
d1	1.800	dpr2	1
tof	144.5	dof2	0
nt	640	dm2	n
ct	82	dmm2	C
alock		dmt2	10000
gain	not used	dseq2	
FLAGS			
		dres2	1.0
i1	n	homo2	n
in	n	DEC3	
dp	y	dfrq3	0
hs	nn	dn3	
DISPLAY			
sp	3682.8	dpr3	1
wp	19486.8	dof3	0
vs	132	dm3	n
sc	0	dmm3	C
wc	250	dmf3	10000
hzmm	77.95	dseq3	
is	500.00	dres3	1.0
rfl	11132.6	homo3	n
rtp	9676.1	PROCESSING	
lh	5	lp	1.00
lms	100.000	wfile	
al cdc ph		proc	fl
		fn	131072
		math	f



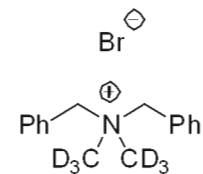
3



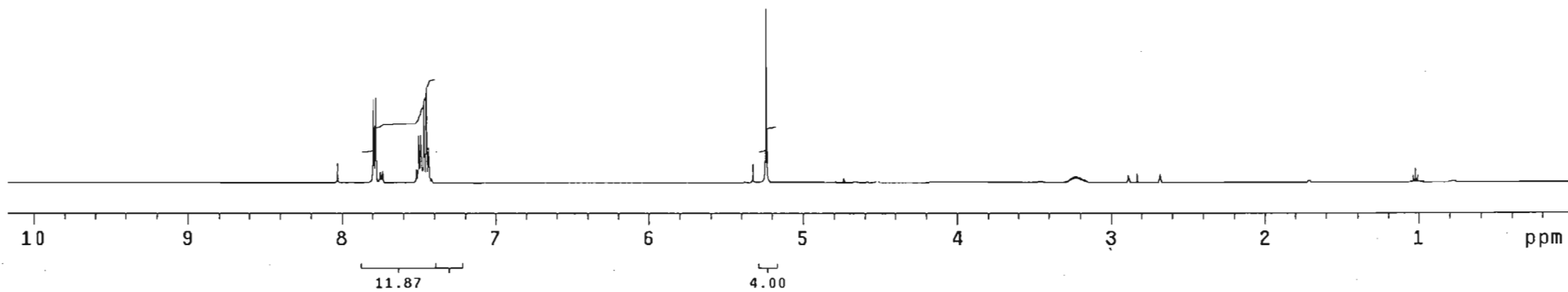
DHL-3_7-BnBr-DMF-NaH

exp7 s2pu1

SAMPLE		DEC. & VT	
date	Sep 24 2008	dfrq	499.866
solvent	dmf	dn	H1
file	exp	dpwr	30
ACQUISITION			
sfrq	499.866	dm	nnn
tn	H1	dmm	c
at	5.016	dmf	200
np	65536	dseq	
sw	6533.3	dres	1.0
fb	4000	homo	n
bs	4		
tpwr	61	DEC2	
pw	13.5	dfrq2	0
d1	0.100	dn2	
tof	269.9	dpwr2	1
nt	16	dof2	0
ct	16	dm2	n
alock	n	dmm2	c
gain	not used	dmf2	200
		dseq2	
il	FLAGS	dres2	1.0
in	n	homo2	n
dp	y	DEC3	
hs	nn	dfrq3	0
		dn3	
DISPLAY			
sp	9.2	dpwr3	1
wp	5073.6	dof3	0
vs	27	dm3	n
sc	0	dmm3	c
wc	250	dmf3	200
hzmm	20.29	dseq3	
is	105.52	dres3	1.0
rf1	4537.1	homo3	n
rff	4013.9	PROCESSING	
th	61	wtfile	ft
ins	4.000	proc	65536
ai	ph	fn	f
		math	
		werr	
		wexp	process p1H
		wbs	
		/nt	wft



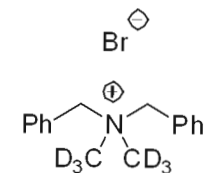
3-D



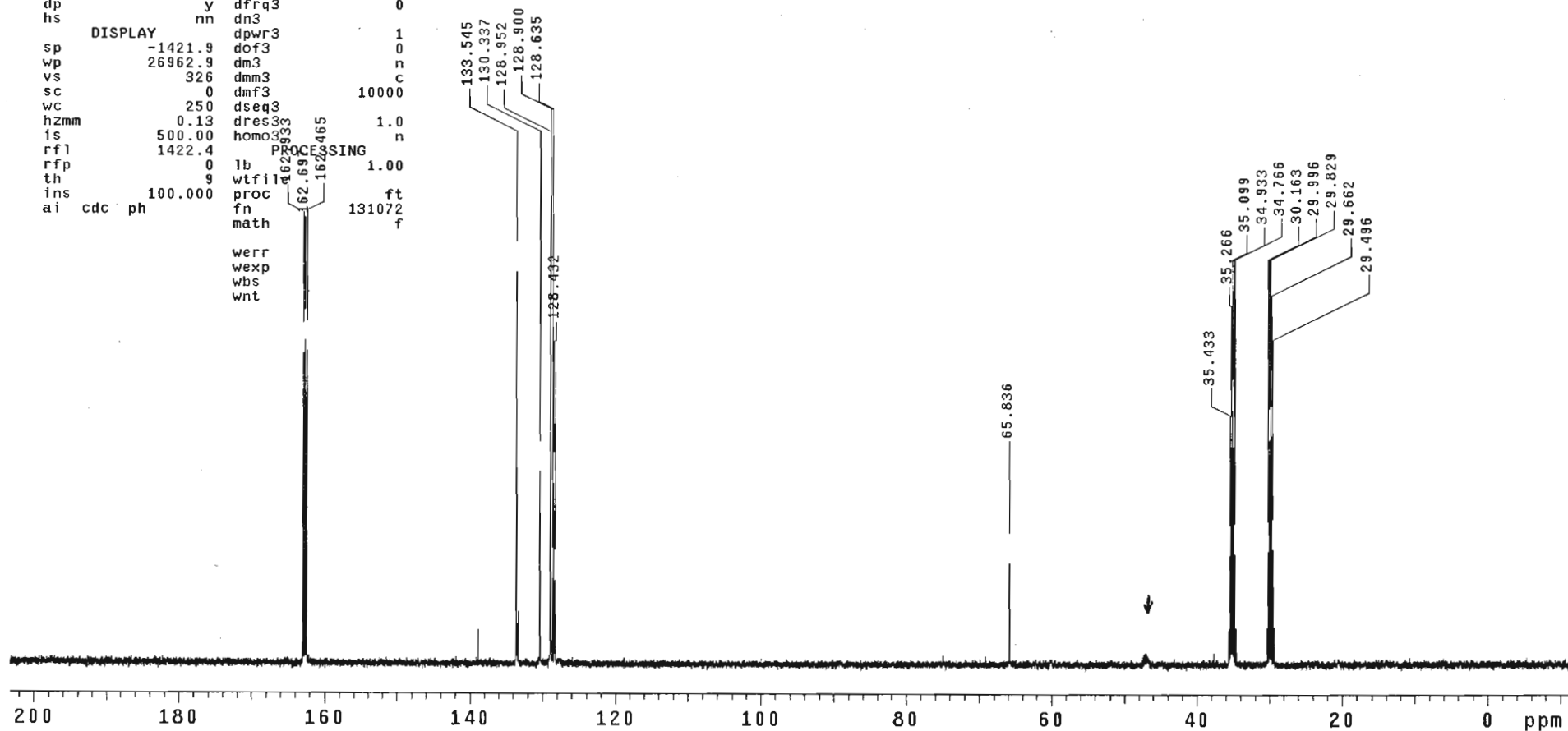
DHL-3_7-BnBr-DMF-NaH

exp8 s2pu1

SAMPLE		DEC. & VT	
date	Sep 24 2008	dfrq	499.866
solvent	dmf	dn	H1
file	exp	dpwr	40
ACQUISITION			
sfrq	125.703	dm	YYY
tn	C13	dmm	w
at	1.215	dmf	8787.35
np	65536	dseq	
sw	26963.3	dres	1.0
fb	15000	homo	n
bs	4	DEC2	
tpwr	52	dfrq2	0
pw	10.2	dn2	
d1	1.800	dpwr2	1
tof	144.5	dof2	0
nt	1200	dm2	n
ct	256	dmm2	c
alock	n	dmf2	10000
gain	not used	dseq2	
FLAGS			
il	n	homo2	n
in	n	DEC3	
dp	y	dfrq3	0
hs	nn	dn3	
DISPLAY			
sp	-1421.9	dpwr3	1
wp	26962.9	dof3	0
vs	326	dm3	n
sc	0	dmm3	c
wc	250	dmf3	10000
hzmm	0.13	dseq3	
is	500.00	dres3	1.0
rfl	1422.4	homo3	n
rfl	1422.4	PROCESSING	
rfl	0	lb	1.00
th	g	wtfil	
ins	100.000	proc	ft
ai	cdc ph	fn	131072
		math	f



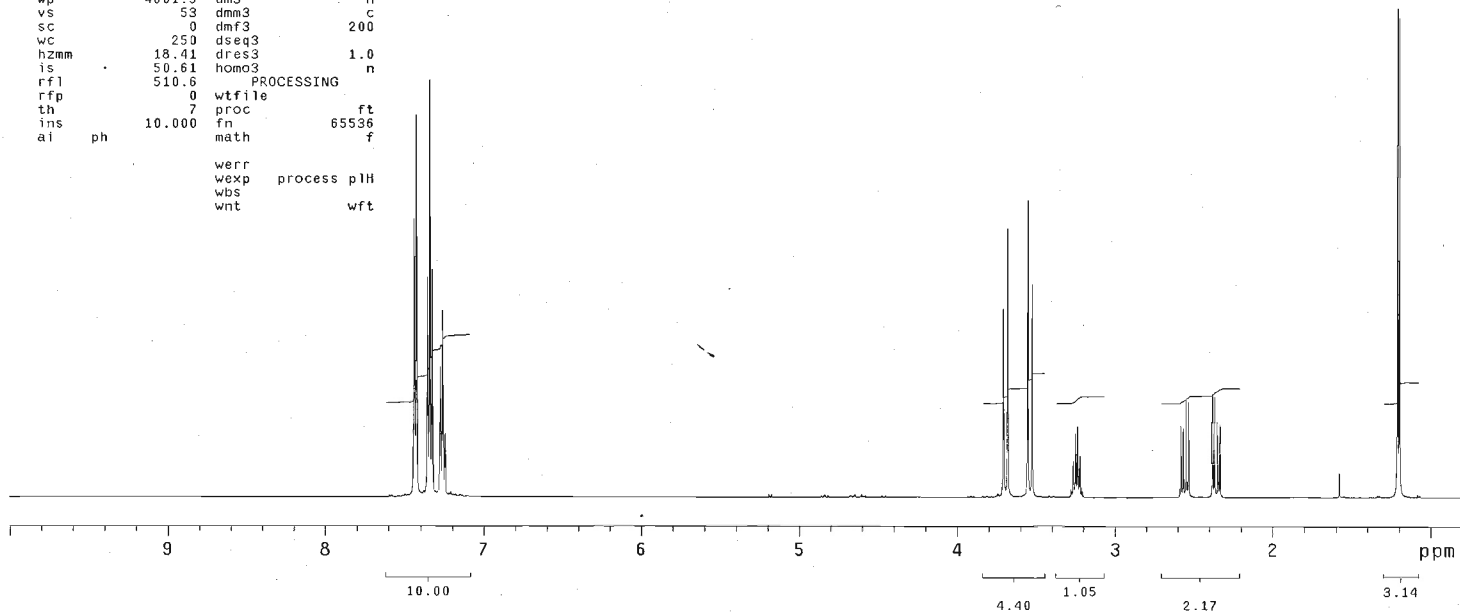
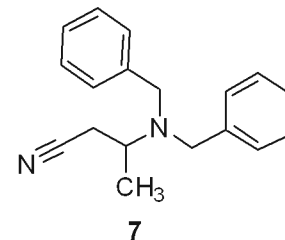
3-D



DHL-56

exp1 s2pu1

SAMPLE		DEC. & VT	
date	Mar 26 2008	dfrq	499.864
solvent	CDC13	dn	H1
file	exp	dpwr	30
ACQUISITION			
sfrq	499.864	dof	0
tn	H1	dm	nnn
at	5.016	dmm	c
np	65536	dmf	200
sw	6533.3	dseq	
fb	4000	dres	1.0
bs	4	homo	n
tpwr	61	dfrq2	DEC2 0
pw	13.5	dn2	
d1	0.100	dpwr2	1
tof	269.9	dof2	0
nt	16	dm2	n
ct	16	dmm2	c
alock	n	dmf2	200
gain	not used	dseq2	
il	FLAGS	dres2	1.0
in	n	homo2	n
dp	y	dfrq3	DEC3 0
hs	nn	dn3	
DISPLAY			
sp	399.6	dpwr3	1
wp	4601.5	dof3	0
vs	53	dm3	n
sc	0	dmm3	c
wc	250	dmf3	200
hzmm	18.41	dseq3	
is	50.61	dres3	1.0
rfl	510.8	homo3	n
PROCESSING			
rffp	0	wffile	
th	7	proc	ft
ins	10.000	fn	65536
ai	ph	math	f
		werr	
		wexp	process pH
		wbs	
		wnt	wft



DHL-56

Pulse Sequence: relayh

Solvent: CDCl₃

Ambient temperature

INOVA-500 "nmr2a.chem.nd.edu"

Relax. delay 1.300 sec
COSY 90-90
Acq. time 0.147 sec
Width 3482.8 Hz
2D Width 3482.8 Hz
4 repetitions
256 increments

OBSERVE H1, 499.8611751 MHz

DATA PROCESSING

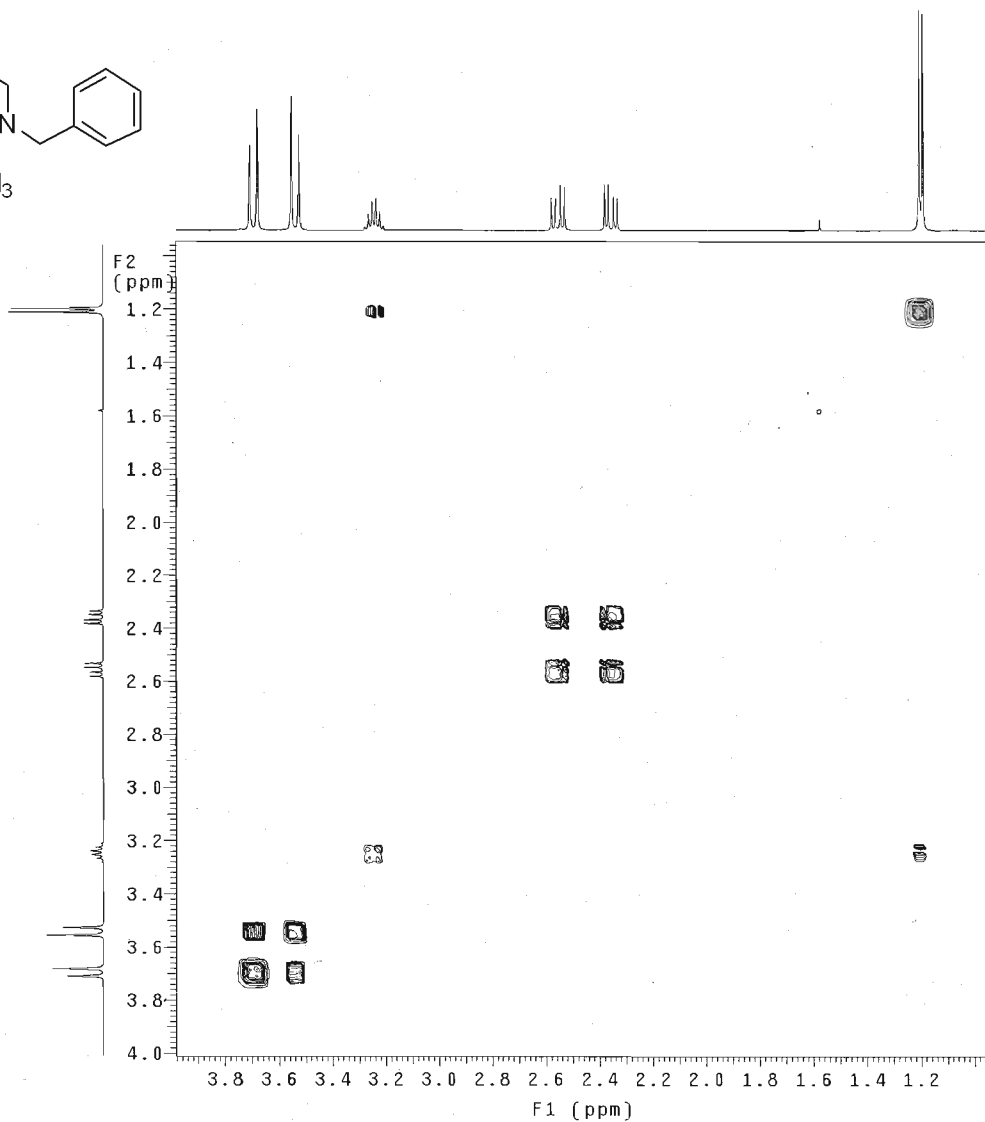
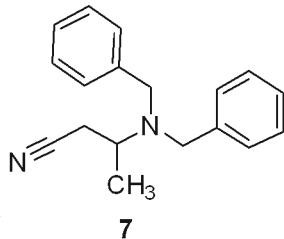
Sine bell 0.074 sec

F1 DATA PROCESSING

Sine bell 0.037 sec

FT size 1024 x 1024

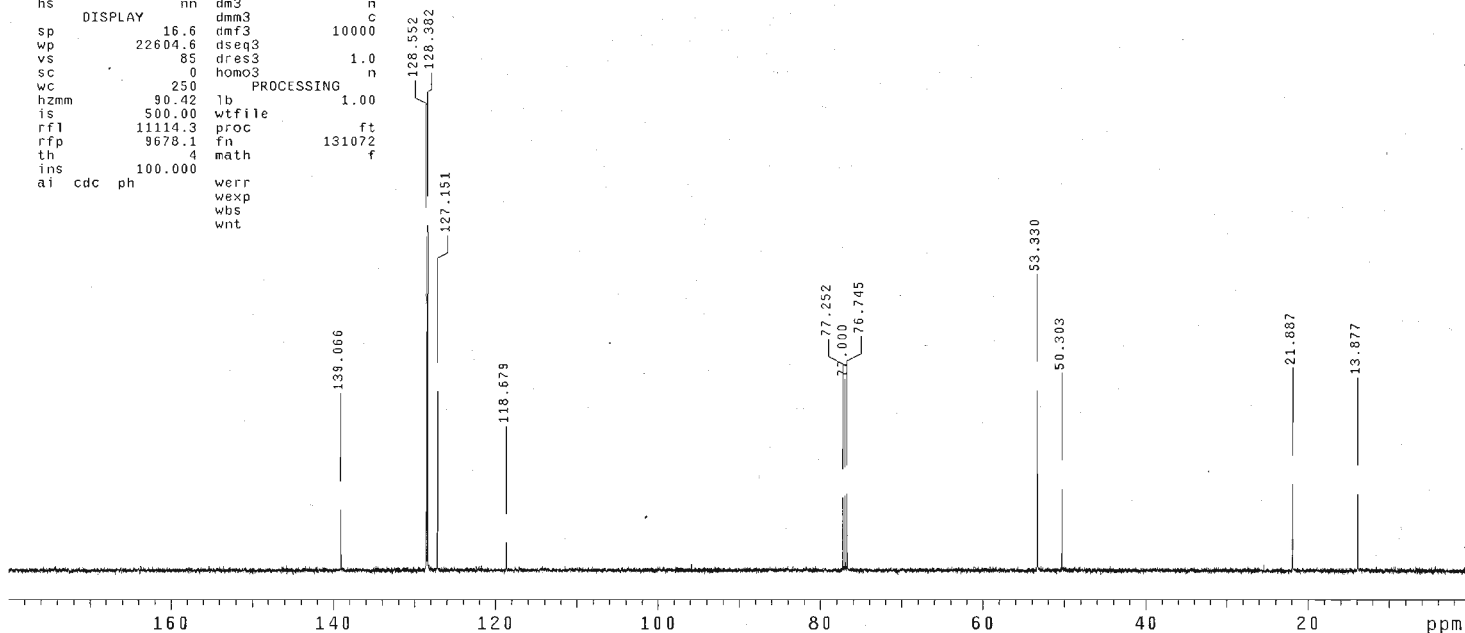
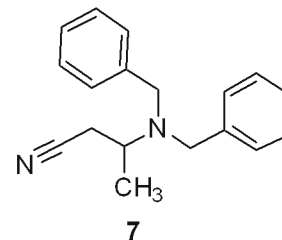
Total time 25 min, 41 sec



DHL-56

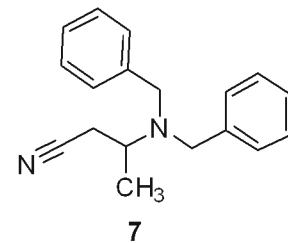
exp6 s2pu1

SAMPLE DEC. & VT
date Mar 26 2008 dfrq 499.864
solvent CDC13 dn H1
file /afs/nd.edu/u~ dpwr 40
ser26/dhesek/Priva~ dof 0
te/DHL/DHL-56-C.fi~ dmm yyy
d w
ACQUISITION dmf 8787.35
sfrq 125.702 dseq
tn C13 dres 1.0
at 1.215 homo n
np 65536 DEC2
sw 26963.3 dfrq2 0
fb 15000 dn2
bs 4 dpwr2 1
tpwr 52 dof2 0
pw 10.2 dm2 n
d1 1.800 dmm2 c
tof 144.5 dmf2 10000
nt 640 dseq2
ct 47 dres2 1.0
alock n homo2 n
gain not used DEC3
FLAGS dfrq3 0
il n dn3
in n dpwr3 1
dp y dof3 0
hs nn dm3 n
DISPLAY dmm3 c
sp 16.6 dmf3 10000
wp 22604.6 dseq3
vs 85 dres3 1.0
sc 0 homo3 n
wc 250 PROCESSING 1.0
hzmm 90.42 lb
is 500.00 wtfile
rfl 11114.3 proc ft
rfp 9678.1 fn 131072
th 4 math f
ins 100.000
al cdc ph werr
wexp
wbs
wnt



DHL-56

Pulse Sequence: dept



CH3 carbons

CH2 carbons

CH carbons

all protonated carbons

150 140 130 120 110 100 90 80 70 60 50 40 30 20 10 ppm

DHL-56

Pulse Sequence: hetcor

Solvent: CDCl3

Ambient temperature

User: 1-14-87

INNOVA-500 "nmr2a.chem.nd.edu"

Relax. delay 1.500 sec

Acq. time 0.111 sec

Width 18403.5 Hz

2D Width 3543.1 Hz

4 repetitions

256 increments

OBSERVE C13, 125.6902003 MHz

DECOUPLE H1, 499.8634369 MHz

Power 40 dB

on during acquisition

off during delay

WALTZ-16 modulated

DATA PROCESSING

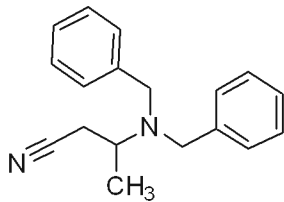
Line broadening 1.0 Hz

F1 DATA PROCESSING

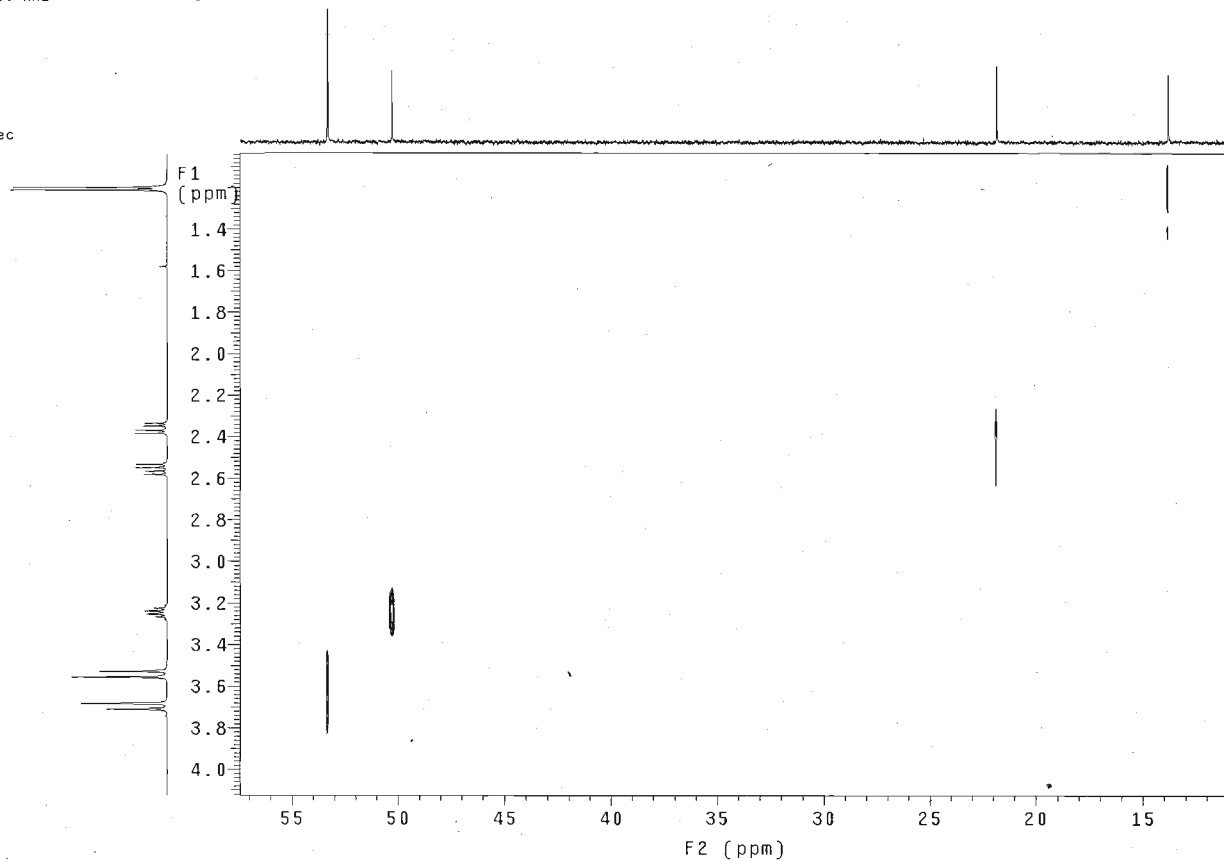
Line broadening 0.3 Hz

FT size 4096 x 1024

Total time 28 min, 38 sec



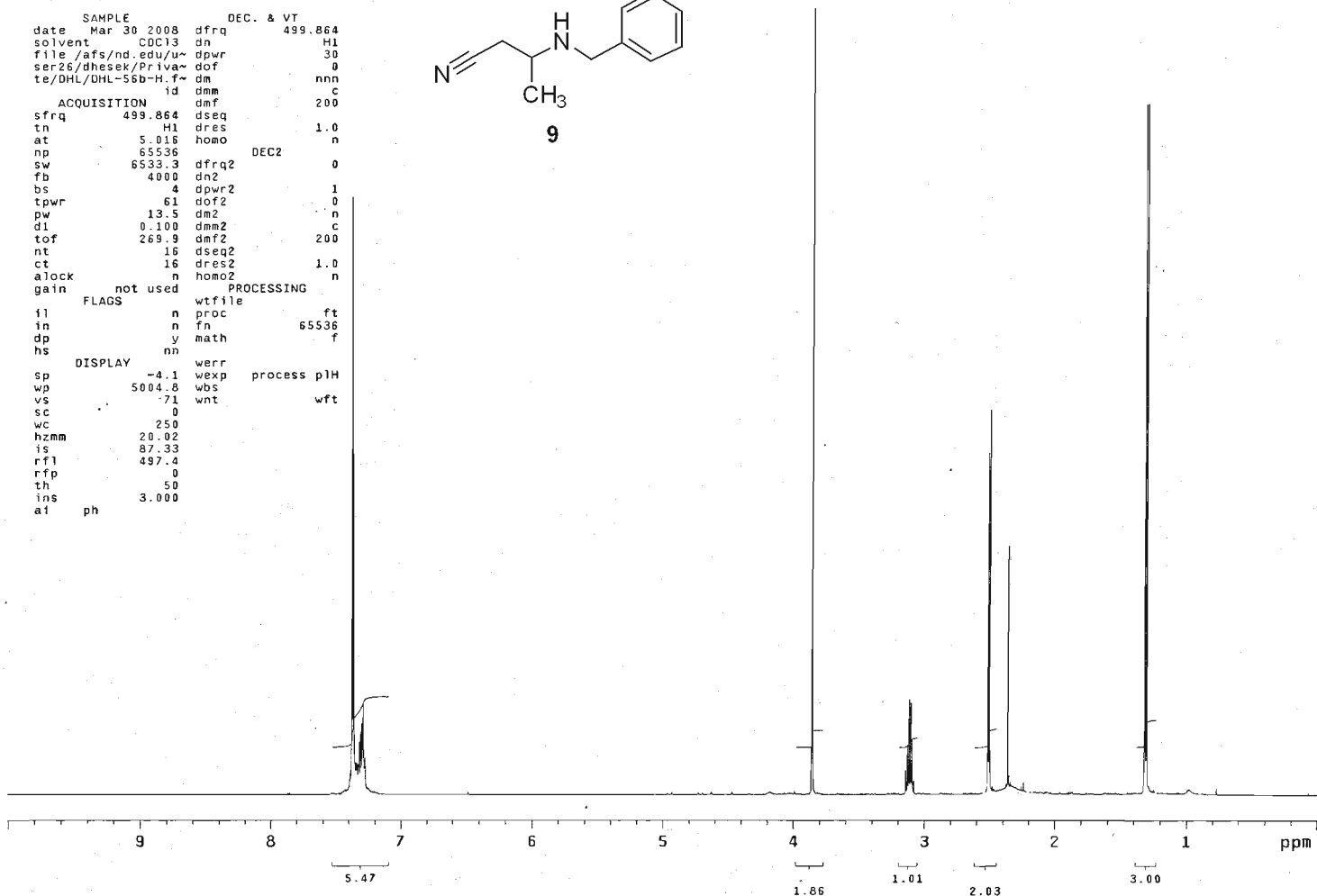
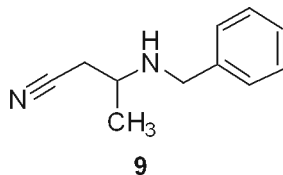
7



DHL-56b

exp3 s2pu1

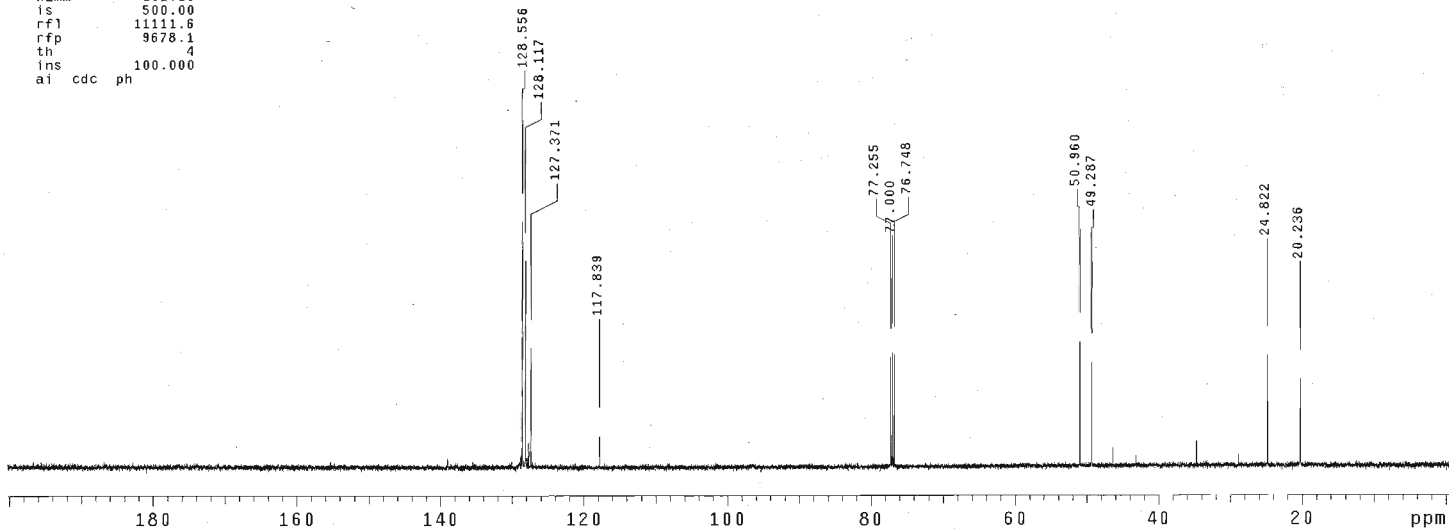
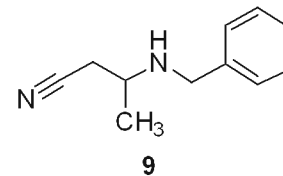
```
SAMPLE          DEC. & VT
date Mar 30 2008 dfrq          499.864
solvent CDC13 dn              H1
file /afs/nd.edu/u~ dpwr      30
ser26/dhesek/Priva~ dof       0
te/DHL/DHL-56b-H.f~ dm        nnn
                                     id dmm          200
ACQUISITION
sfrq          499.864 dmf
tn            H1 dres          1.0
at           5.016 homo        n
np           65536 DEC2        0
sw           6533.3 dfrq2
fb           4000 dn2
bs            4 dpwr2          1
tpwr         61 dof2           0
pw           13.5 dm2           n
dl           0.100 dmm2         c
tof          269.9 dmf2         200
nt            16 dseq2
ct            16 dres2          1.0
alock         n homo2          n
gain          not used PROCESSING
FLAGS
fl            n wtfile
in            n proc           ft
dp            y fn             65536
hs            y math           f
DISPLAY
sp           -4.1 werr
wp           5004.8 wbs process pH
vs           -71 wnt
sc            0
wc            250
hzmm         20.02
is           87.33
rf1          497.4
rfp           0
th            50
ins          3.000
a1           ph
```



DHL-56b

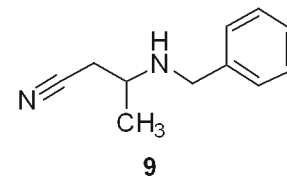
exp2 s2pu1

SAMPLE DEC. & VT
date Mar 30 2008 dfrq 499.864
solvent CDC13 dn H1
file /afs/nd.edu/u- dpwr 40
ser26/dhesek/Private/ dof 0
te/DHL/DHL-56b-C.f- dm yyy
id dmm w
8787.35
ACQUISITION dmf
sfrq 125.702 dseq 8787.35
tn C13 dres 1.0
at 1.215 homo n
np 65536 PROCESSING
sw 26963.3 lb 1.00
fb 15000 wtfile
bs 4 proc ft
tpwr 52 fn 131072
pw 10.2 math f
d1 1.800
tof 144.5 werr
nt 1200 wexp
ct 107 wbs
aLock n wnt
gain not used
FLAGS
il n
in n
dp y
hs nn
DISPLAY
sp -122.6
wp 25297.8
vs 146
sc 0
wc 250
hzm 101.19
is 500.00
rf1 11111.6
rfp 9678.1
th 4
ins 100.000
ai cdc ph



DHL-56b

Pulse Sequence: dept



CH3 carbons



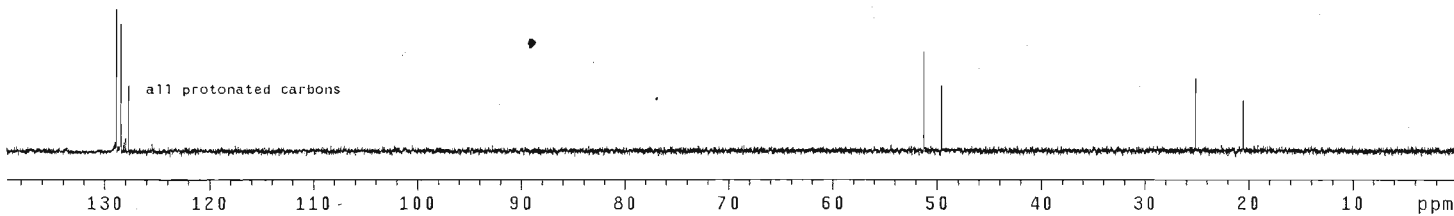
CH2 carbons



CH carbons



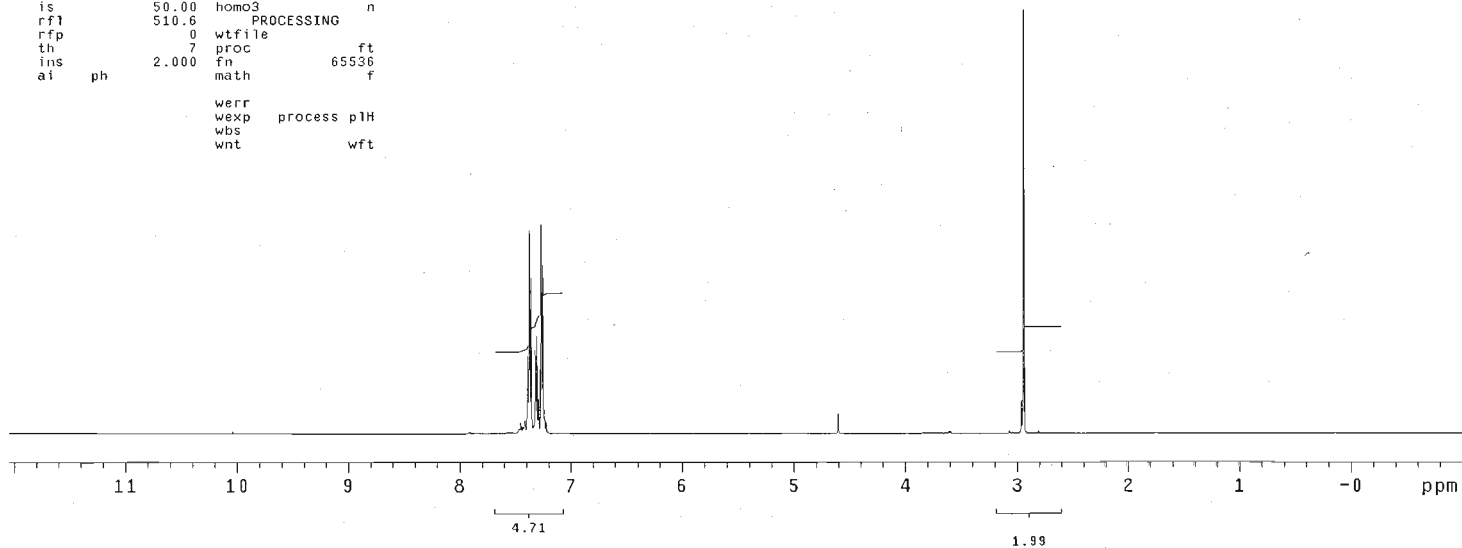
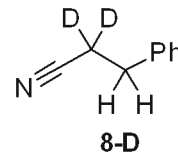
all protonated carbons



DHL-56D-2C

exp4 s2pu1

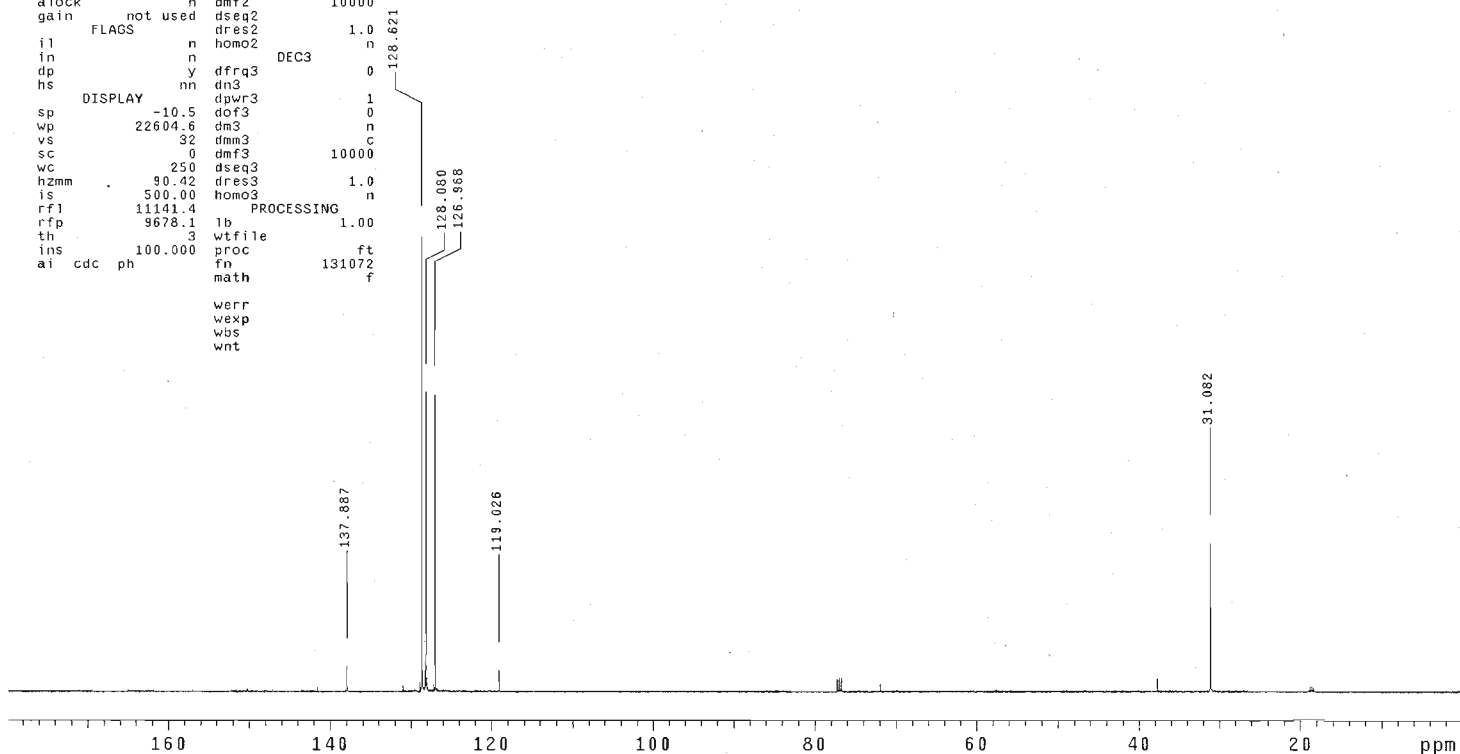
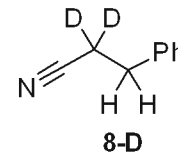
```
SAMPLE          DEC. & VT
date  Apr 20 2008  dfrq      499.864
solvent  CDC13      dn        H1
file     ACQUISITION  exp      dpwr     30
          499.864      dm        nnn
sfrq     499.864      dmm     c
tn       H1          dmf     200
at       5.016       dseq
np       65536       dres     1.0
sw       6533.3      homo    n
fb       4000
bs       4
tpwr     61          dfrq2    0
pw       13.5        dn2
d1       0.100       dpwr2    1
tof      269.9       dof2     0
nt       16          dm2     n
ct       16          dmm2    c
alock    n           dmf2    200
gain     not used    dseq2
          FLAGS      dres2    1.0
          n           homo2    n
          n           dfrq3    0
          y           dn3
          nn          dpwr3    1
          DISPLAY    dof3     0
          -510.4      dm3     n
          6533.1      dmm3    c
          39          dmf3    200
          0           dseq3
          wc       25.0       dres3    1.0
          hzmm     26.13      homo3    n
          is       50.00
          rf1      510.6      PROCESSING
          rfp      0          wtfiler
          th       7          proc
          lns     2.000      fn       65536
          at       ph        math
          werr
          wexp     process pH
          wbs
          wnt      wft
```



DHL-560-2C

exp2 s2pu1

```
SAMPLE      DEC. & VT
date Apr 20 2008  dfrq      499.864
solvent CDC13      dn        H1
file        exp     dpwr      40
ACQUISITION  dof      0
sfrq       125.702  dm         yy
tn          C13     dmm        w
at          1.215   dmf        8787.35
np          65536   dseq       1.0
sw          26963.3 dres       n
fb          15000   homo
bs          4
tpwr        52     dfrq2      0
pw          10.2   dn2
d1          1.800   dpwr2      1
tof         144.5   dof2       0
nt          640    dm2        n
ct          64     dmm2       c
alock       n      dmf2      10000
gain        not used
          FLAGS   dseq2     1.0
          n      dres2     n
          n      homo2
          DEC3   dfrq3     0
          dn3
          DISPLAY dpwr3     1
          sp      -10.5   dof3     0
          wp      22604.6  dm3      n
          vs      32     dmm3     c
          sc      0      dmf3     10000
          wc      250    dseq3    1.0
          hzmm    90.42  dres3    n
          is      500.00 homo3
          rf1     11141.4 PROCESSING
          rfp     9678.1 lb         1.00
          th      3      wtfile
          lns     100.000 ft
          ai cdc ph   fn        131072
          math      f
          werr
          wexp
          wbs
          wnt
```

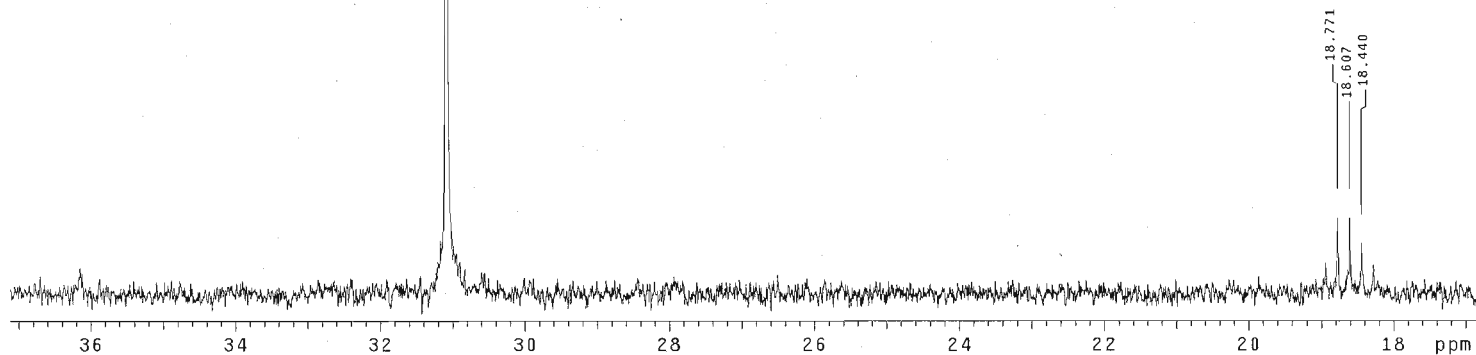
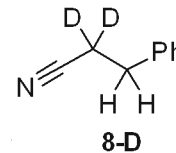


DHL-560-2C

exp2 s2pul

31-082

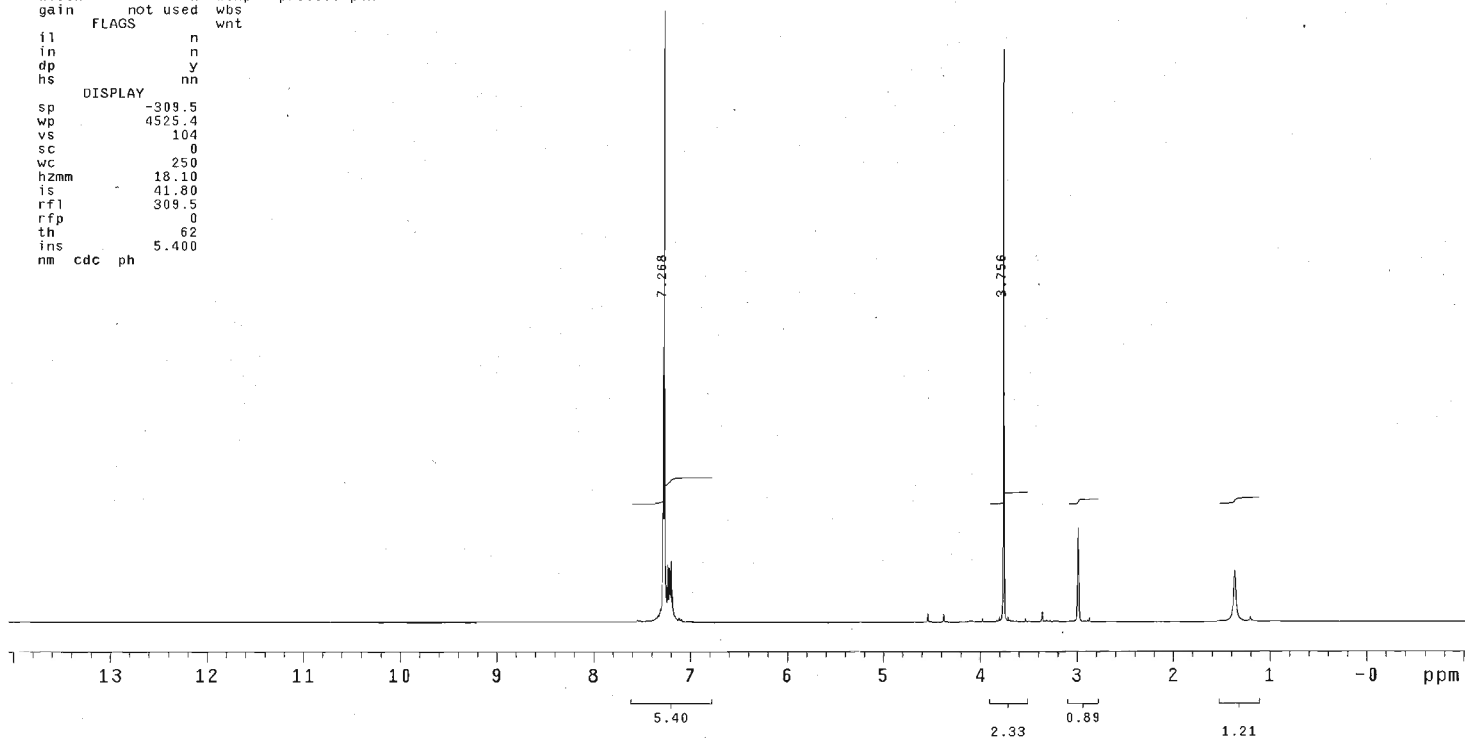
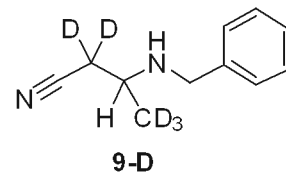
SAMPLE		DEC. & VT	
date	Apr 20 2008	dfrq	499.864
solvent	CDC13	dn	H1
file	exp	dpwr	40
ACQUISITION			
sfrq	125.702	dm	yyy
tn	C13	dmm	w
at	1.215	dmf	8787.35
np	65536	dseq	
sw	26963.3	dres	1.0
fb	15000	homo	n
bs	4		
tpwr	52	dfrq2	DEC2 0
pw	10.2	dn2	
d1	1.800	dpwr2	1
tof	144.5	dof2	0
nt	640	dm2	n
ct	68	dmm2	c
alock	n	dmf2	10000
gain	not used	dseq2	
FLAGS			
il	n	dres2	1.0
in	n	homo2	n
dp	y		
hs	nn	dfrq3	DEC3 0
DISPLAY			
sp	2115.3	dn3	
wp	2550.8	dpwr3	1
vs	433	dof3	0
sc	0	dm3	n
wc	250	dmm3	c
h2mm	10.20	dmf3	10000
is	500.00	dseq3	
rfl	11141.4	dres3	1.0
rfp	9678.1	homo3	n
th	6	PROCESSING	
ins	100.000	lb	1.00
al	cdc ph	wffile	
		proc	ft
		fn	131072
		math	f
		werr	
		wexp	
		wbs	
		wnt	



DHL-56D_3C

exp3 s2pu1

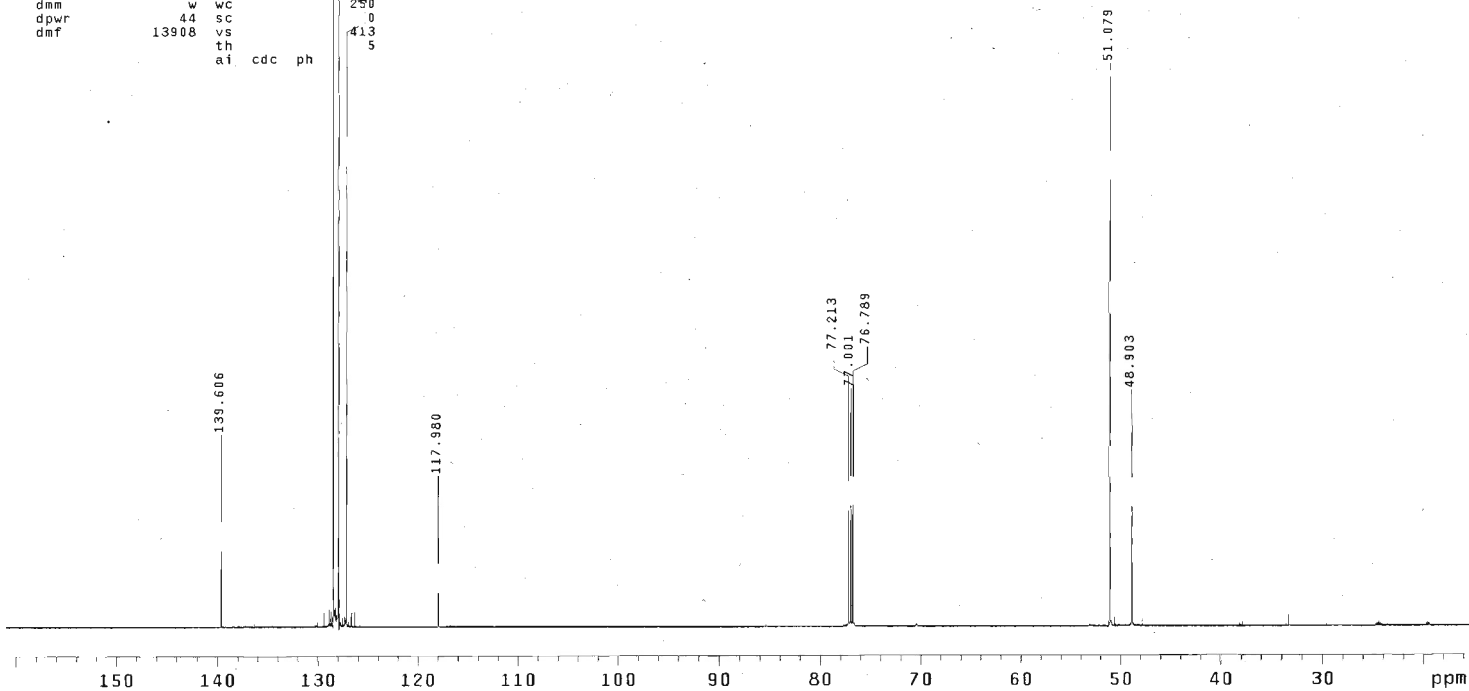
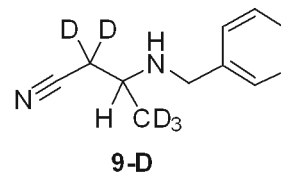
```
SAMPLE          DEC. & VT
date Apr 18 2008 dfrq          299.948
solvent cdc13 dn              H1
file      exp dpwr            30
ACQUISITION    dof            0
sfrq        299.948 dm         nnn
tn          H1 dmm            c
at          3.620 dmf         200
np          32768 dseq
sw          4525.4 dres        1.0
fb          2600 homo         n
bs          4
tpwr        59 wtf file
pw          14.0 proc
d1          0.380 fn          65536
tof        481.6 math
nt          16
ct          16 werr
alock      n wexp process pH
gain      not used wbs
          FLAGS      wnt
il         n
in         n
dp         y
hs         nn
DISPLAY
sp         -309.5
wp         4525.4
vs         104
sc         0
wc         250
hzmm       18.10
ls         41.80
rfl        309.5
rfd        0
th         62
ins        5.400
nm cdc ph
```



DHL-56D-3C

exp2 Carbon

SAMPLE		SPECIAL	
date	Apr 25 2008	temp	22.0
solvent	cdcl3	gain	not used
file	exp	spin	not used
ACQUISITION			
sw	26041.7	pw90	7.500
at	1.783	alfa	10.000
np	92842	FLAGS	128.498 n
fb	17000		128.464 n
bs	16		127.951 n
d1	1.220	dp	127.951 y
nt	1200	hs	127.951 nn
ct	1200	PROCESSING	
tn	TRANSMITTER	lb	0.50
fn	C13	fb	282144
DISPLAY			
sfrq	150.849	sp	2268.5
tof	-2982.6	wp	22015.8
tpwr	58	rfl	13333.2
pw	7.500	rffp	11814.5
DECOUPLER			
dn	H1	rp	-123.0
dof	0	lp	11.8
PLOT			
dmm	yyy	wc	230
dpwr	44	sc	0
dmf	13908	vs	413
		th	5
		ai	cdc ph



DHL-56D-3C

exp2 Carbon

```
SAMPLE SPECIAL 22.0
date Apr 25 2008 temp
solvent cdc13 gain not used
file exp spin not used
ACQUISITION hst 0.008
sw 26041.7 pw90 7.500
at 1.783 alfa 10.000
np 32842
fb 17000 il n
bs 16 in n
d1 1.220 dp y
nt 1200 hs nn
ct 1200
TRANSMITTER lb 0.50
tn C13 fn 262144
sfrq 150.849
tof -2982.6 sp DISPLAY 2124.7
tpwr 58 wp 2763.1
pw 7.500 rfl 13333.2
DECOUPLER rfp 11614.5
dn H1 rp -123.0
dof 0 lp PLOT 11.6
dm yyy w
dmm 44 wc 250
dpwr 44 sc 0
dmf 13908 vs 11217
th 12
ai cdc ph
```

