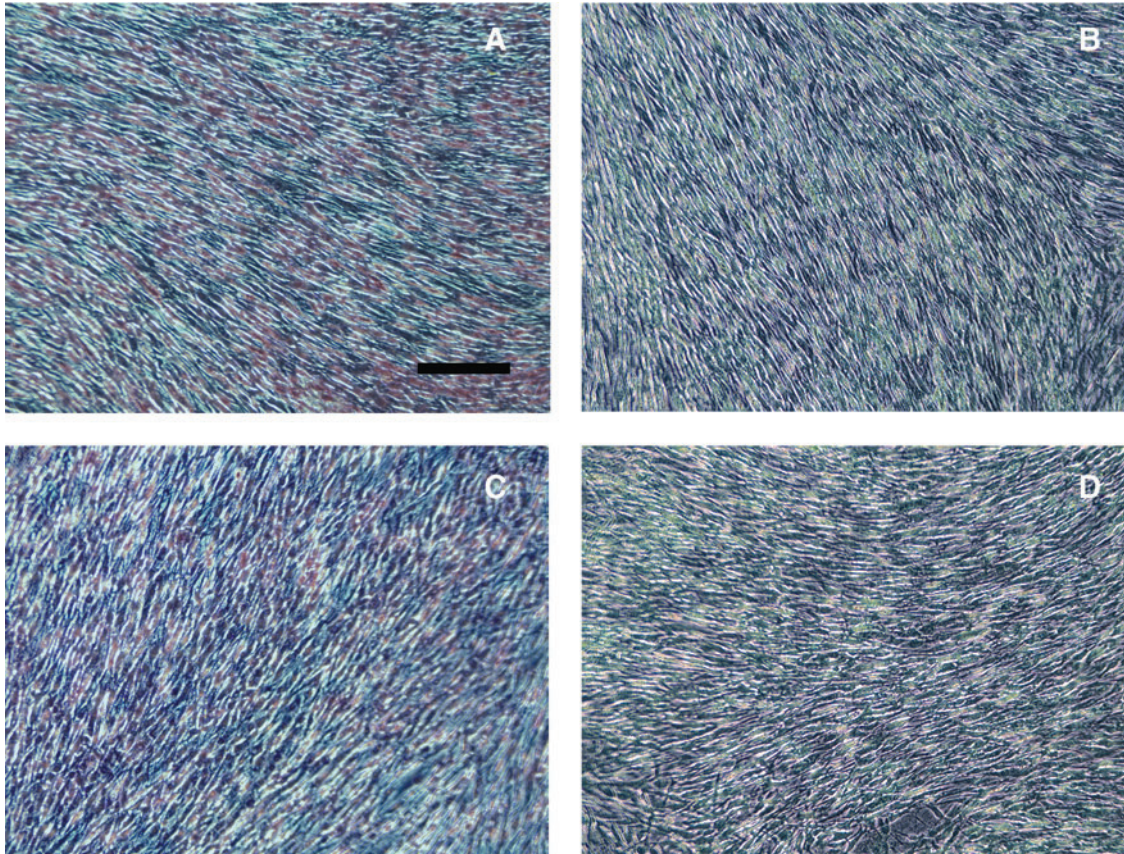


Supplementary Data



SUPPLEMENTARY FIG. S1. Photographs showing the production of (A, C) collagenous and (B, D) non-collagenous proteins in hTDSCs maintained at 20% oxygen (O_2) tension until confluence and subsequently incubated at (A, B) 20% or (C, D) 2% O_2 tension for 7 days as indicated by Sirius Red F3BA and Fast Green FCF staining, respectively. Scale bar: 50 μ m. N=5/group at 20% and N=6/group at 2% O_2 tension. hTDSCs, human tendon-derived stem cells.