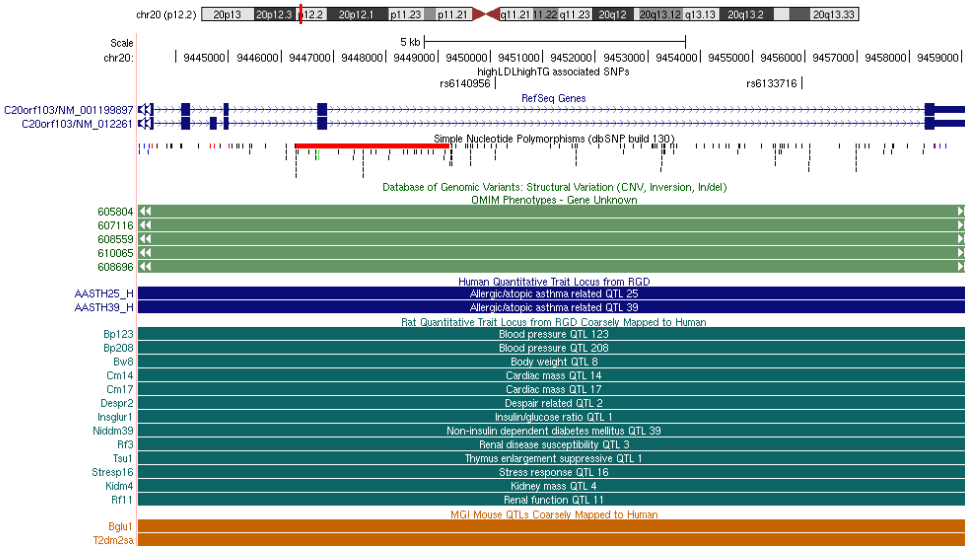
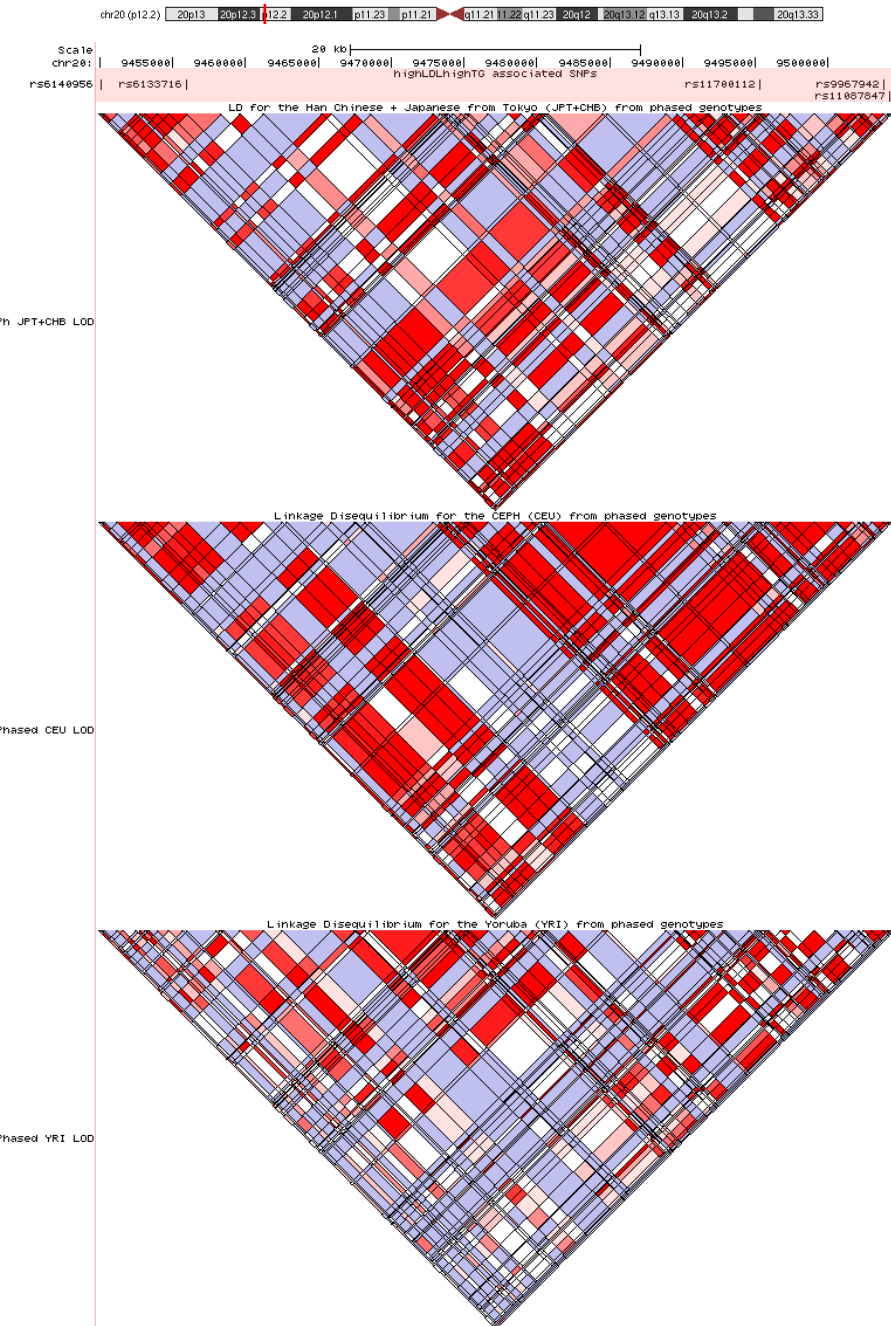


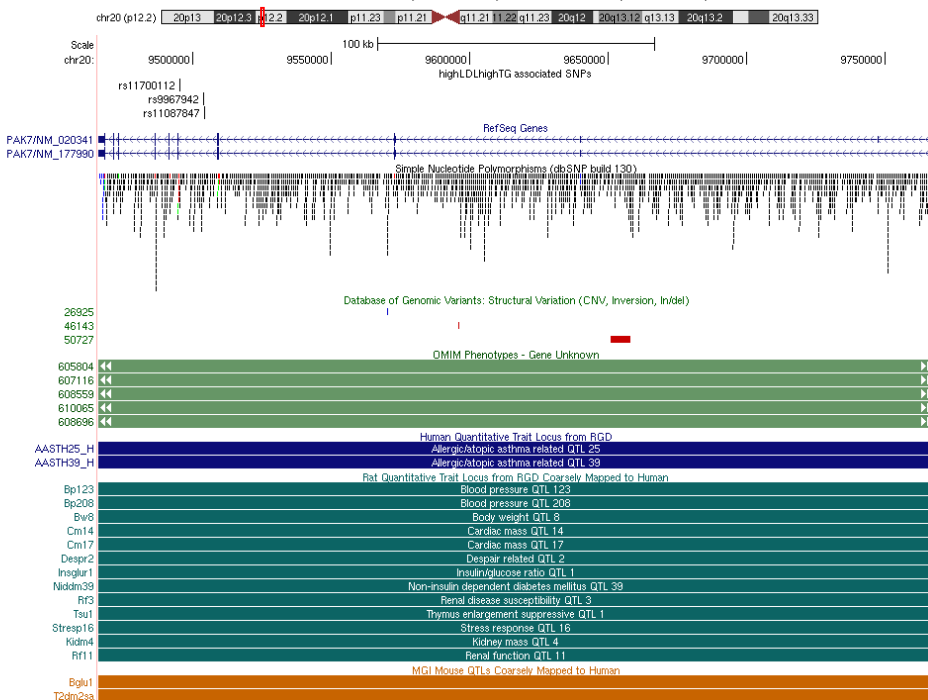
C20orf103- chr20:9,443,271-9,459,171



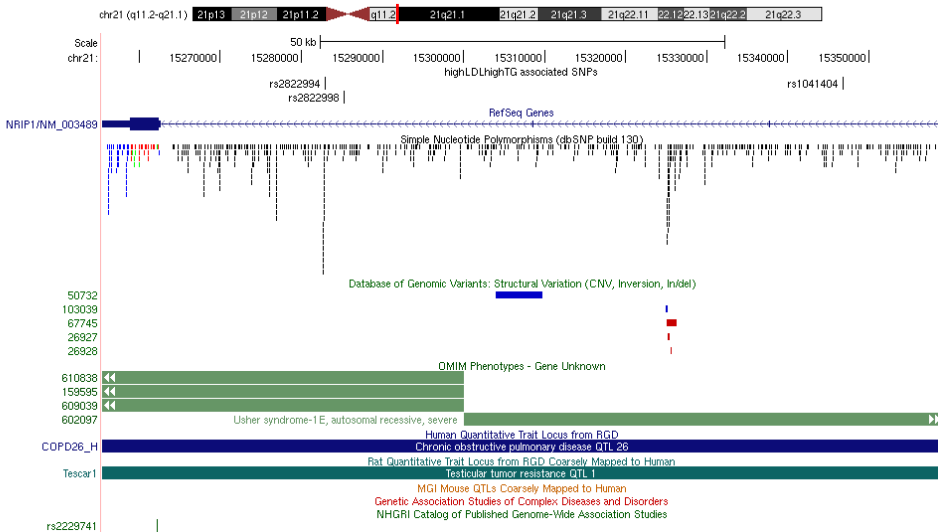
LD for 5SNPs on chr20:9,449,800-9,504,500



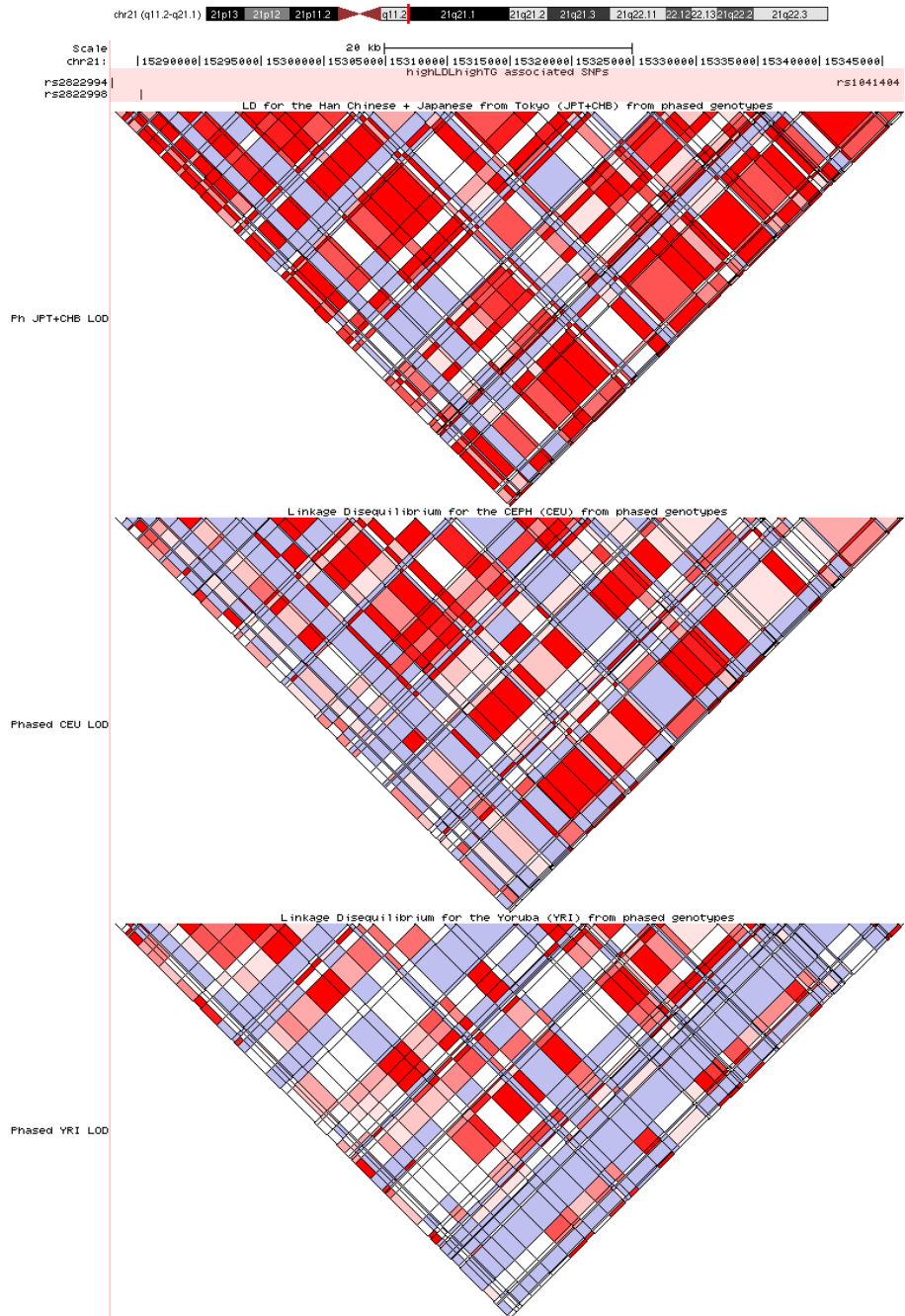
PAK7- chr20:9,466,037-9,767,687



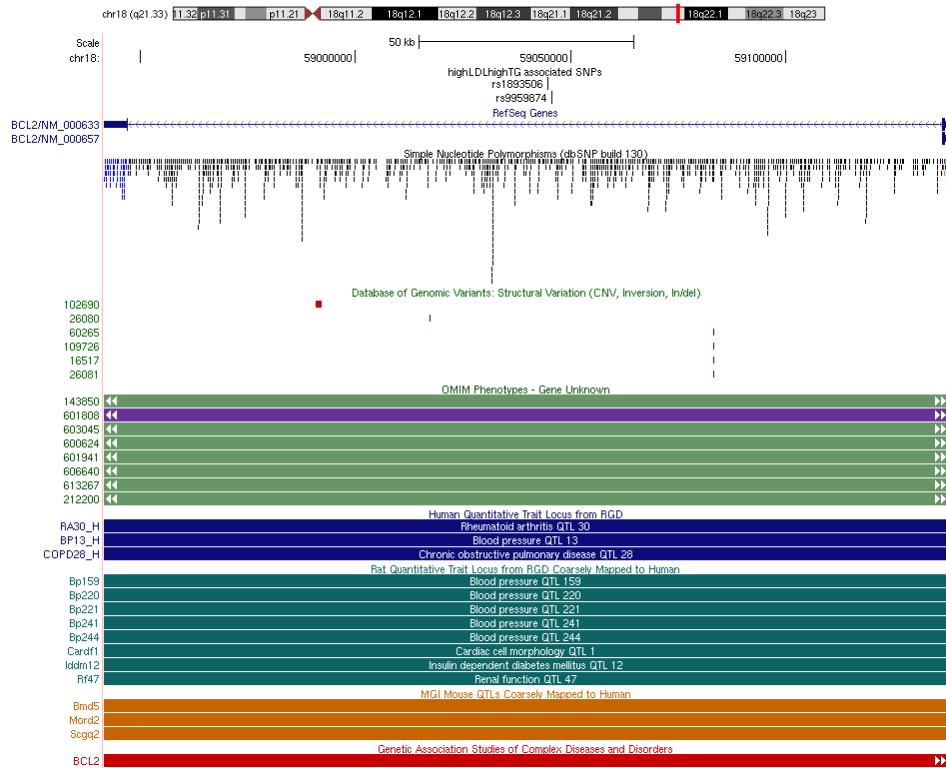
NRIP1- chr21:15,255,427-15,359,000



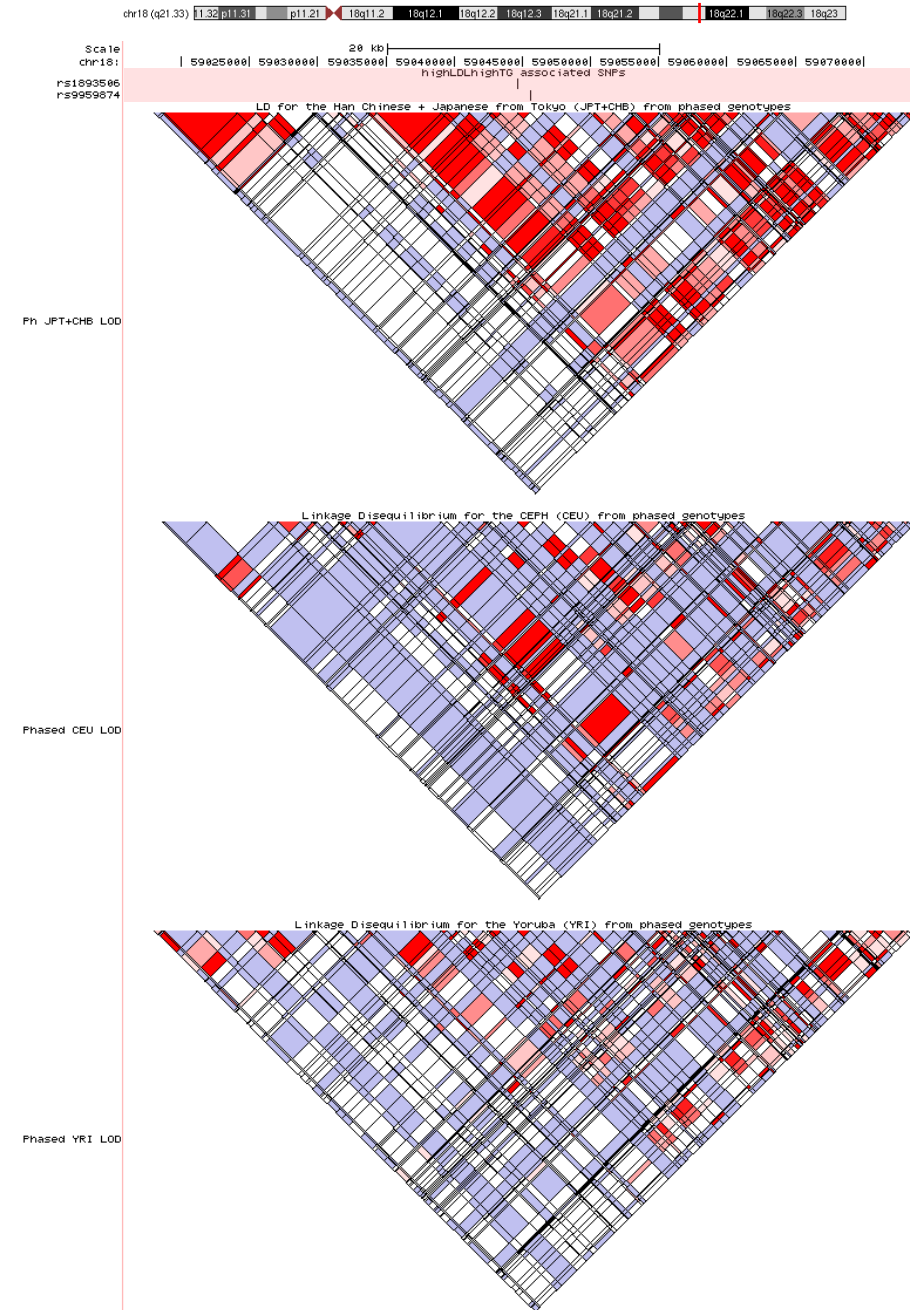
LD for 3SNPs on chr21:15,282,928-15,346,780



BCL2- chr18:58,941,559-59,137,600

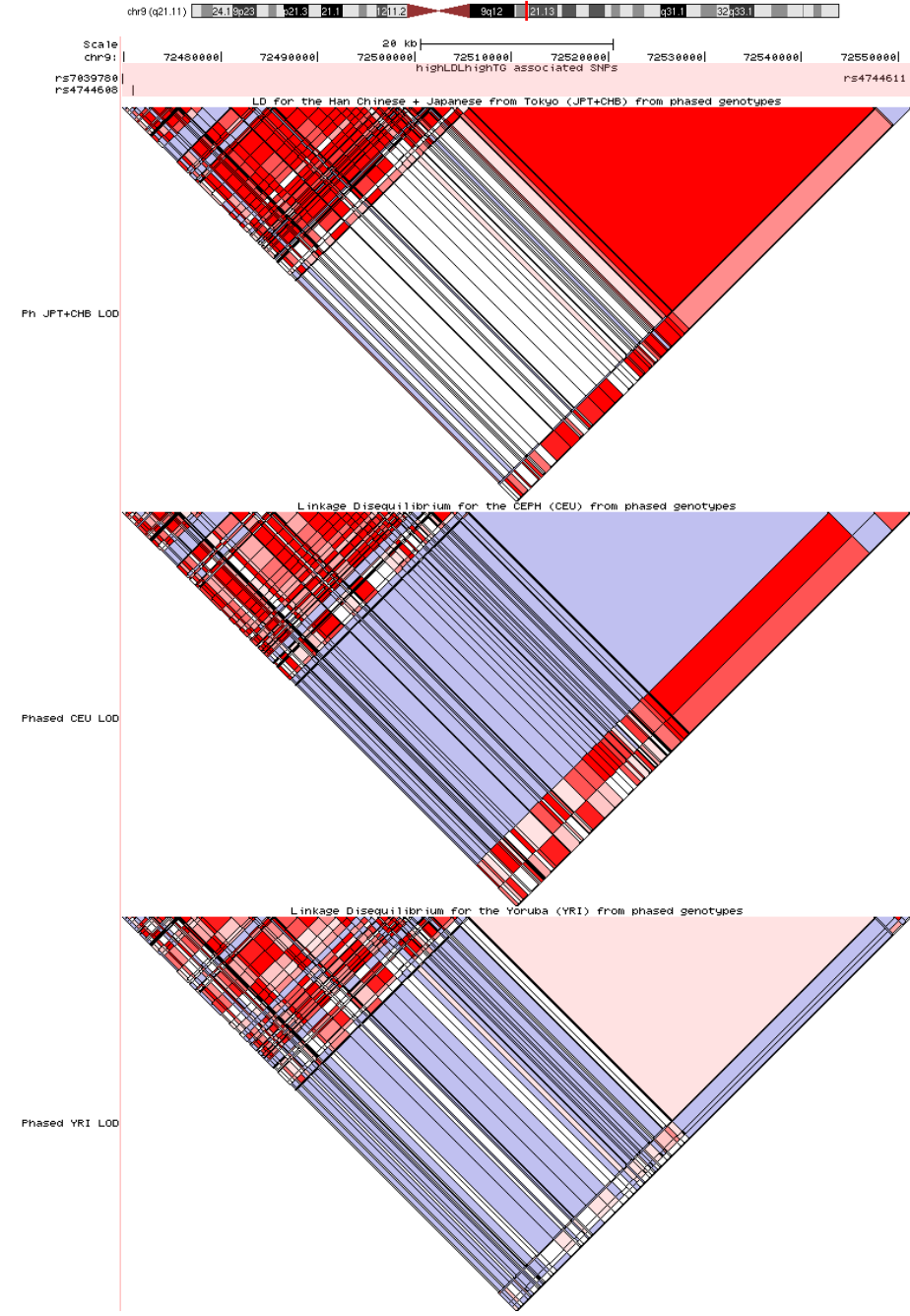


LD for 2SNPs on chr18:59,015,832-59,074,354

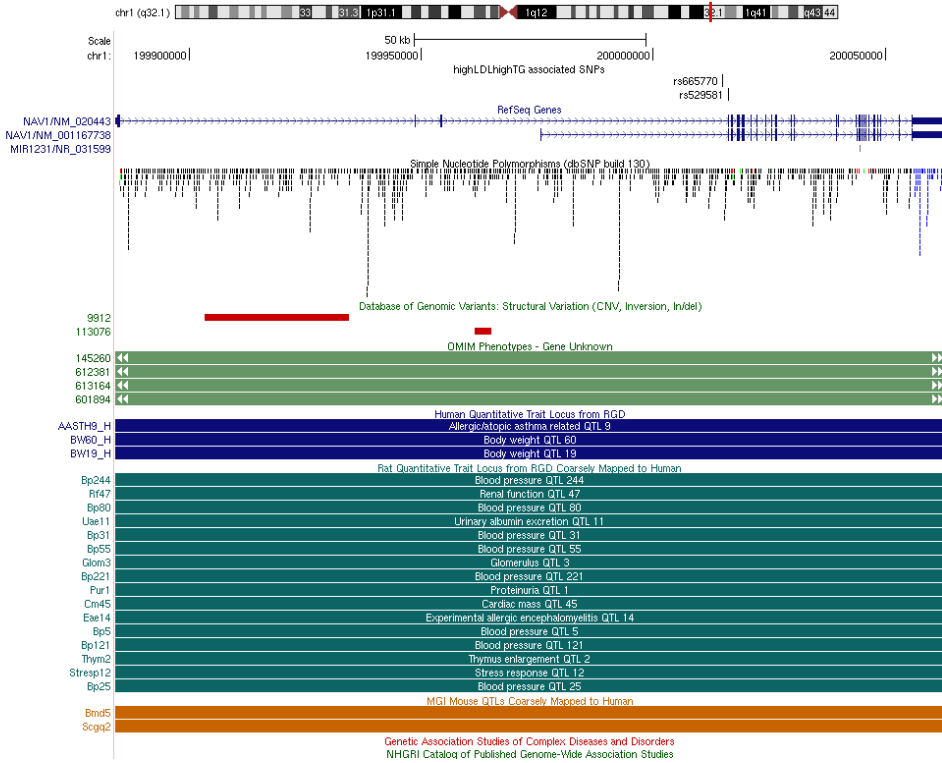


TRPM3- chr9:72,339,786-72,926,334

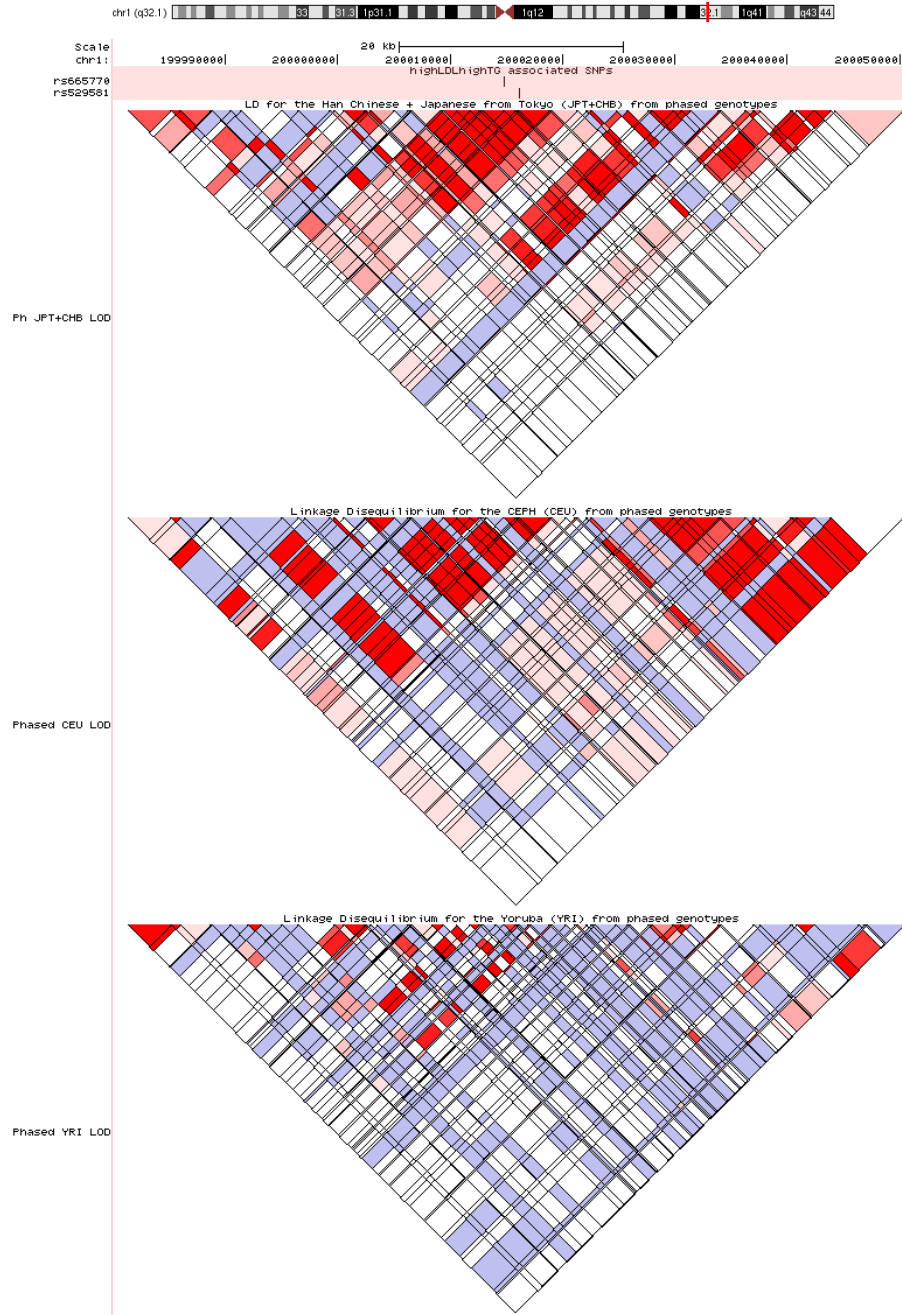
LD for 3SNPs on chr9:72,469,777-72,551,400



NAV1- chr1:199,884,073-200,062,850



LD for 2SNPs on chr1:199,980,083-200,050,807



TRPM3- chr9:72,339,786-72,926,334

LD for 3SNPs on chr9:72,469,777-72,551,400

