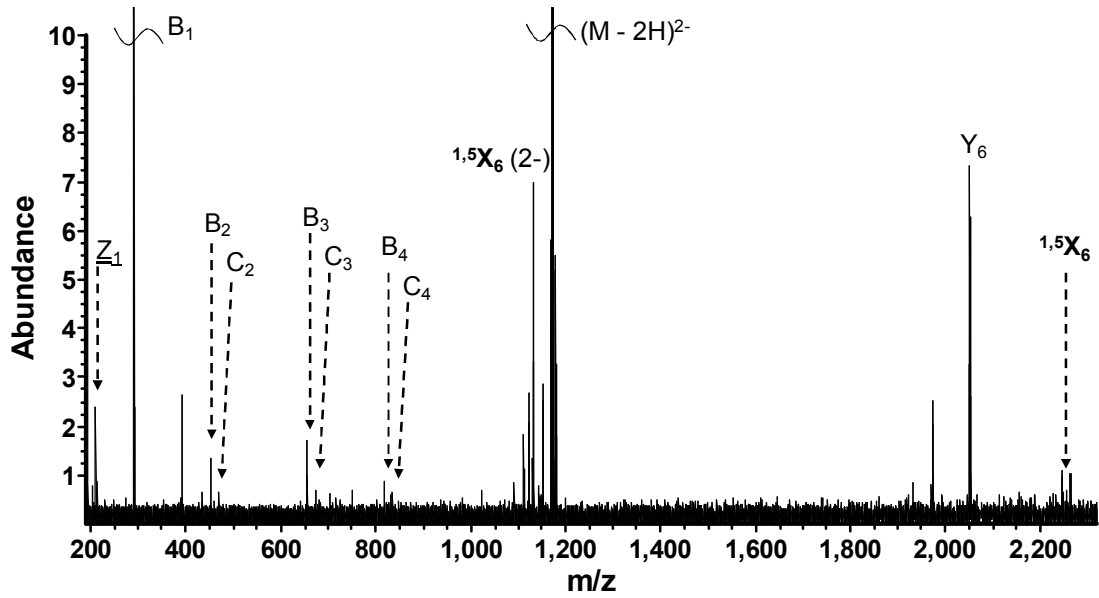


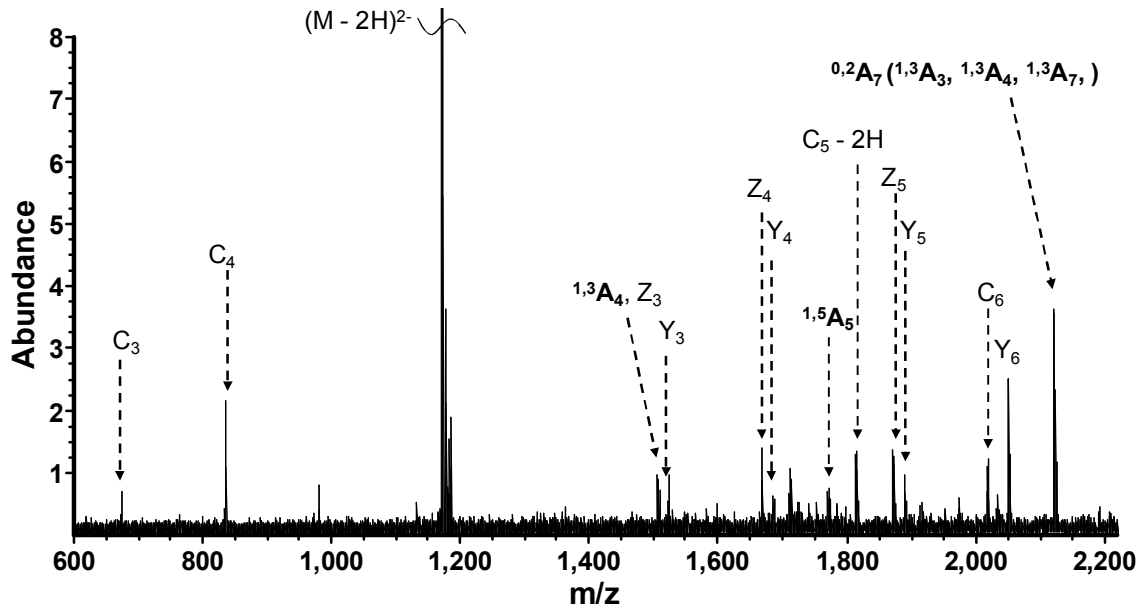
Figure S1. MS/MS spectra of a 2-AA- (a), (b) and 2-AB- (c), (d) derivatized N-linked glycan released from human transferrin. Spectra from IRMPD (a), (c) and EDD (b), (d) are shown.

Supplementary Figure S1:

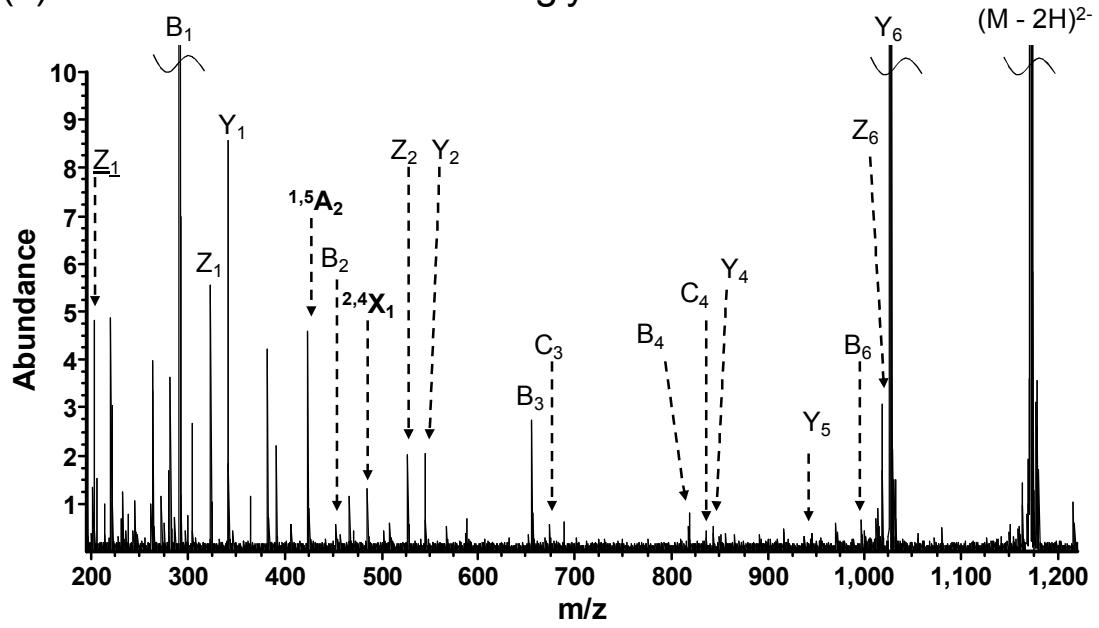
(a) IRMPD of 2-AB labeled *N*-glycan



(b) EDD of 2-AB labeled *N*-glycan



(c) IRMPD of 2-AA labeled *N*-glycan



(d) EDD of 2-AA labeled *N*-glycan

