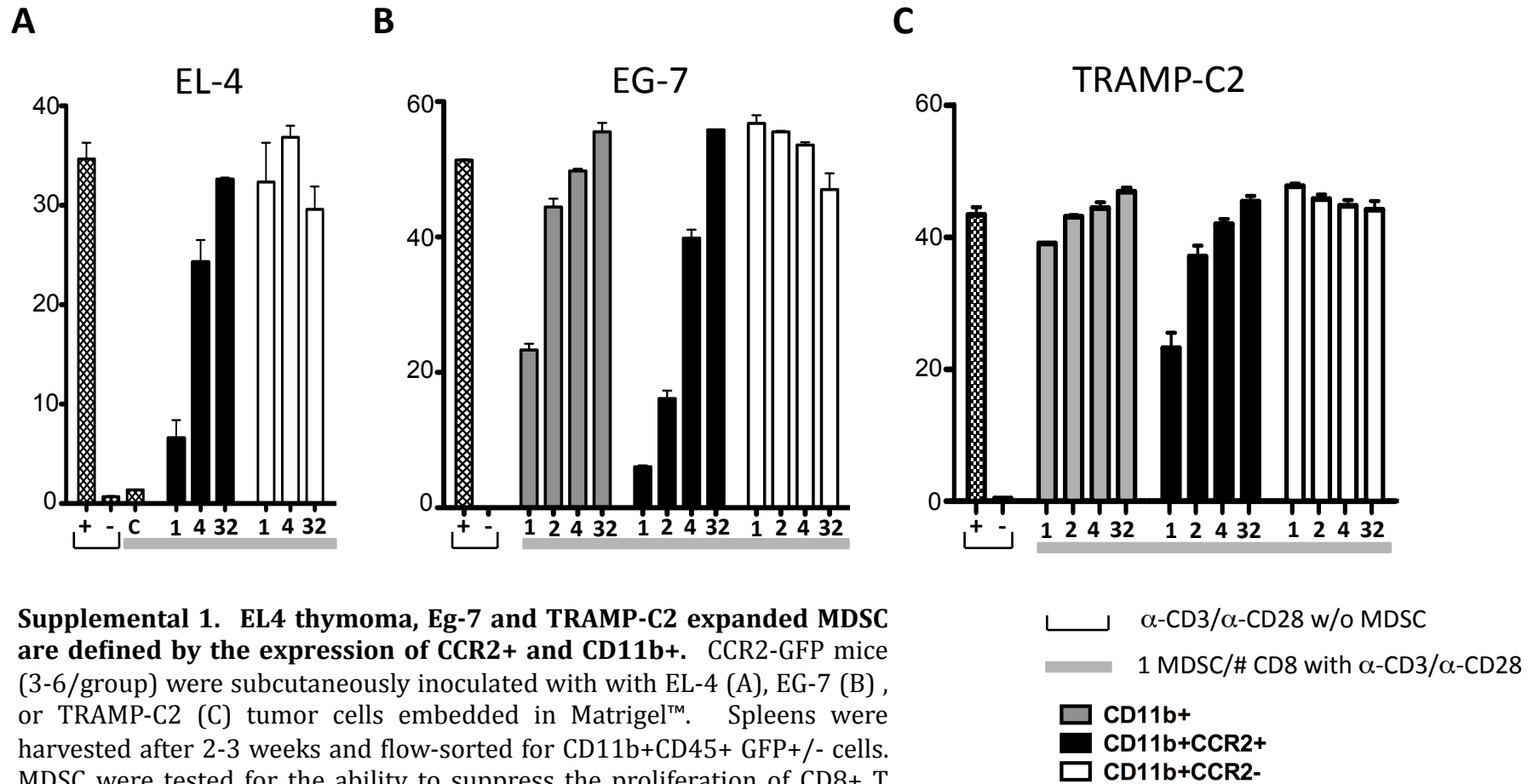
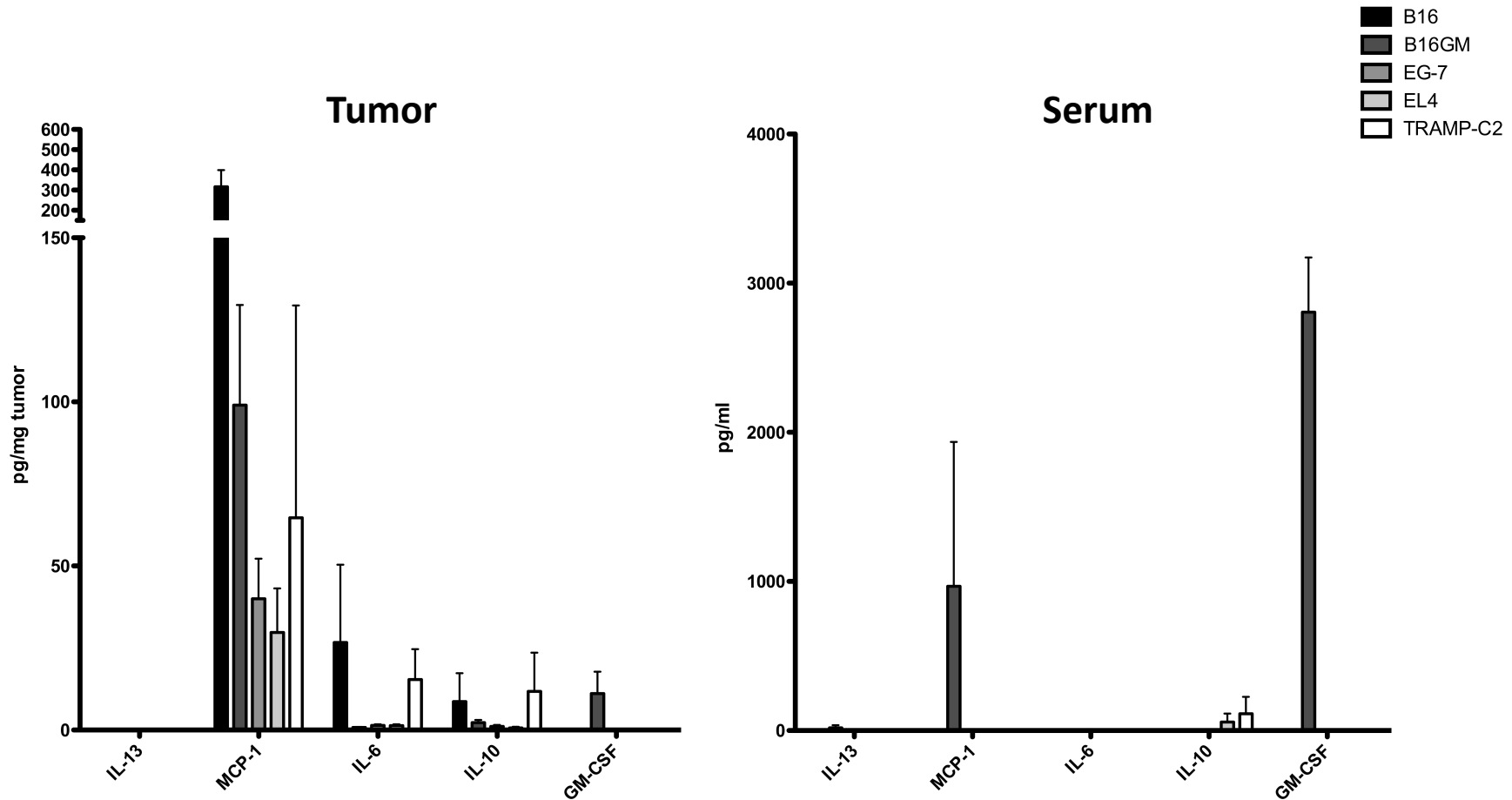


## Supplemental Figure 1



**Supplemental 1. EL4 thymoma, Eg-7 and TRAMP-C2 expanded MDSC are defined by the expression of CCR2+ and CD11b+.** CCR2-GFP mice (3-6/group) were subcutaneously inoculated with with EL-4 (A), EG-7 (B), or TRAMP-C2 (C) tumor cells embedded in Matrigel™. Spleens were harvested after 2-3 weeks and flow-sorted for CD11b+CD45+ GFP+/- cells. MDSC were tested for the ability to suppress the proliferation of CD8+ T cells. Proliferation was measured after 72 hours of co-culture with a 1:1, 1:2, 1:4, or 1:32 ratio of MDSC:CD8 as indicated. +/- anti-CD3/CD28, C = CCR2+MDSC sorted from B16-GM tumor bearing animal spleens used as control suppressors. One of 2-3 similar experiments is shown.

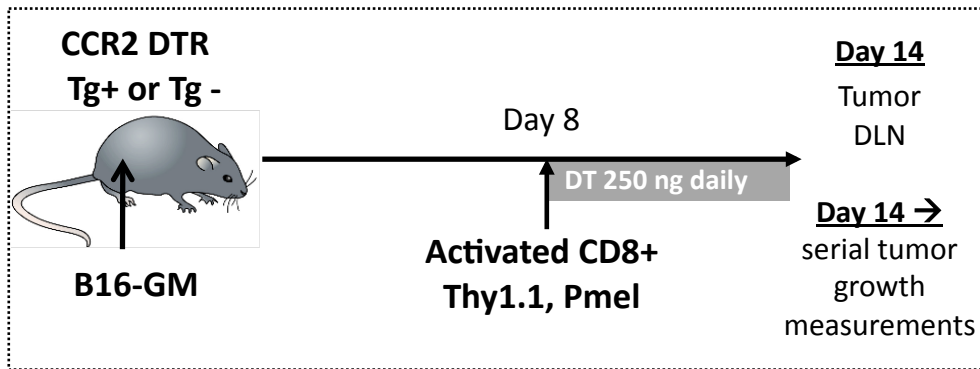
## Supplemental Figure 2



**Supplemental 2.** Cytokine production in vivo by several tumor models. B16, B16GM, EG-7, EL4, or TRAMP-C2 cells were injected into C57Bl/6J mice intradermally (n = 3-4 /tumor). Mice sera were obtained by retro-orbital bleed when tumors were between 0.5-1 cm in diameter. Tumors were weighed and homogenized in 500  $\mu$ l PBS. Cytokines were measured using eBioscience FlowCytomix beads according to the manufacturer's instructions and analyzed using FlowCytomixPro software. Results are depicted as picograms/mg of tumor or picograms/ml in the serum. 1 of 2 similar experiments is shown.

## Supplemental Figure 3

**A**



**Supplemental 3.** CCR2-DTR transgene positive and negative bone marrow chimeric mice were generated. Mice were inoculated with B16-GM tumors in Matrigel™ or via intradermal injection for tumor infiltrate assessment or tumor growth measurements, respectively. Mice received various numbers of CD8+pmel T cells via tail vein 8 days after tumor challenge. DT was injected i.p. daily from day 8 - 13. (A). Myeloid cell quantity in the tumors of CCR2-DTR transgene positive and negative DT treated mice (n=5/group) (B). Ly6C = CD11b+Ly6C hi Ly6G- ; Ly6G = CD11b+ Ly6C int Ly6G hi; CD11b = CD11b+ Ly6C-Ly6G-

**B**

