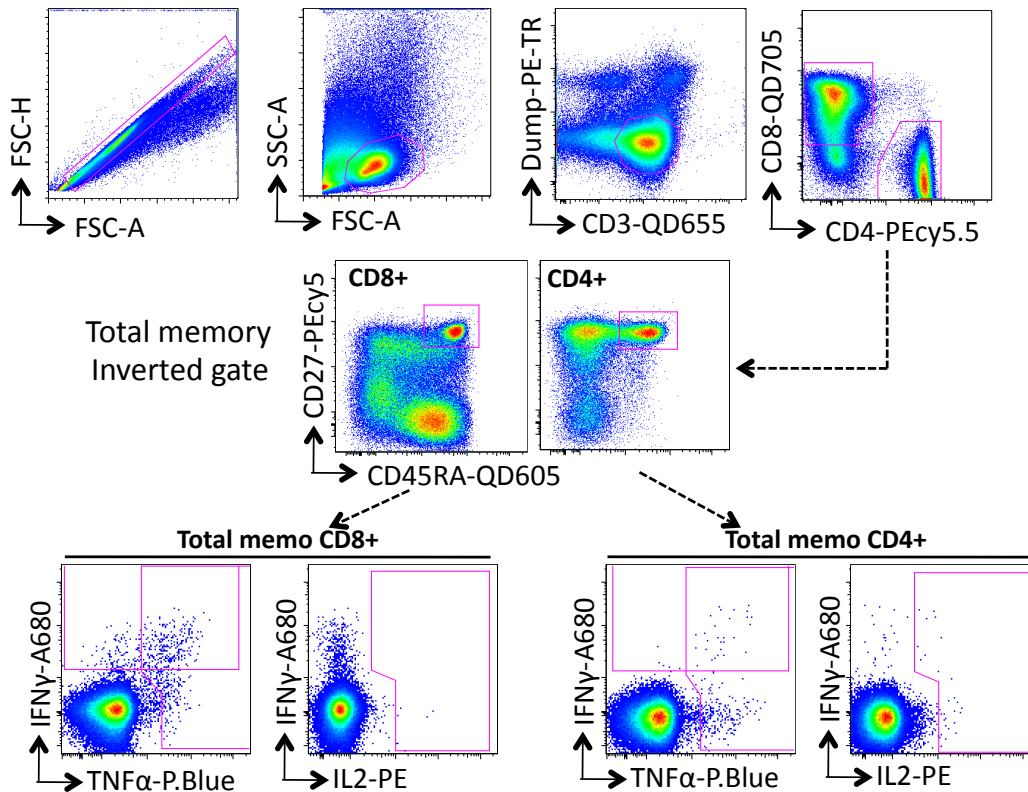
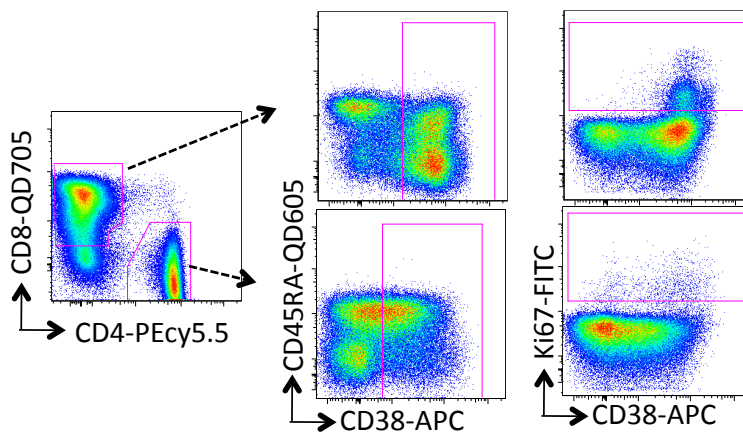


A- Cytokine production gating strategy**B- Activation/proliferation phenotype gating strategy****Supplementary figure 1: Gating strategy**

A- Singlets were identified in forward scatter plots. Lymphocytes were identified based on size and granularity. Dead cells, monocytes and B cells were excluded by V-amine, CD14 and CD19 stain and live lymphocytes were identified using CD3 staining. Gated CD8+ T and CD4+ T cells were then separated by the expression of CD45RA and CD27 to identify Naïve cells (CD45RA+ CD27+). An inverted gate was then applied to exclude naïve cells. Expression of IL-2, TNF α and IFN γ were then assessed in Both CD4+ and CD8+ T cell memory compartment. **B-** Activation status and proliferation abilities of T cells subsets were measured as depicted.