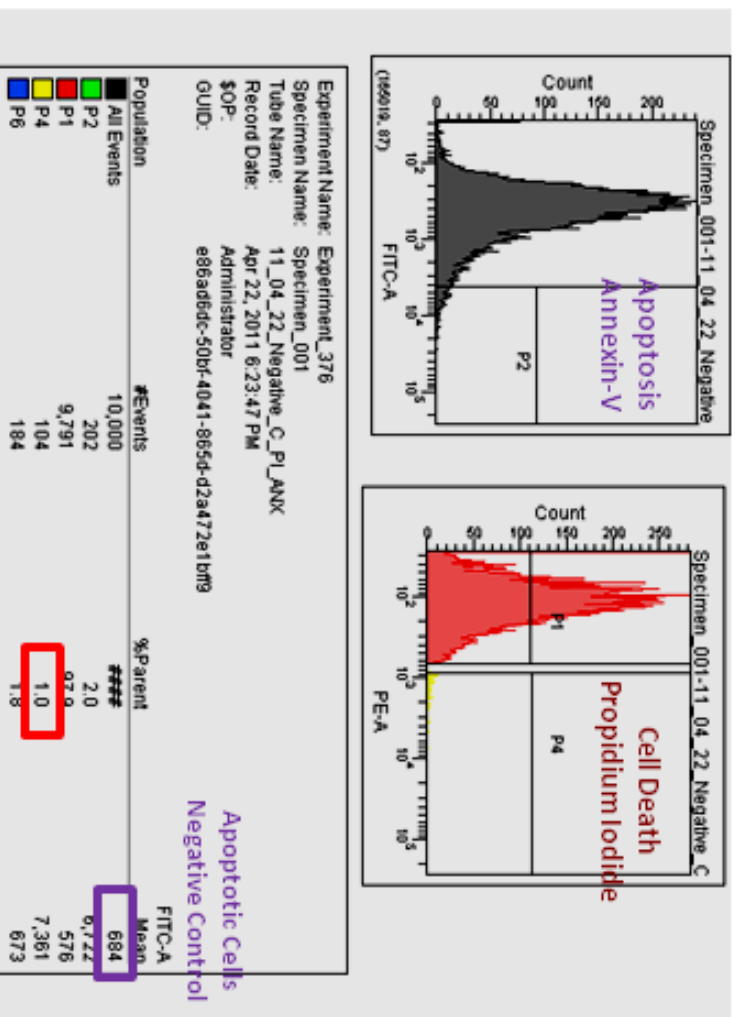


# Supplemental Figure 1A Sungmun Lee

## TPEN Treatment (30 $\mu$ M for 30 min) Did Not Induce Apoptosis Nor Toxicity

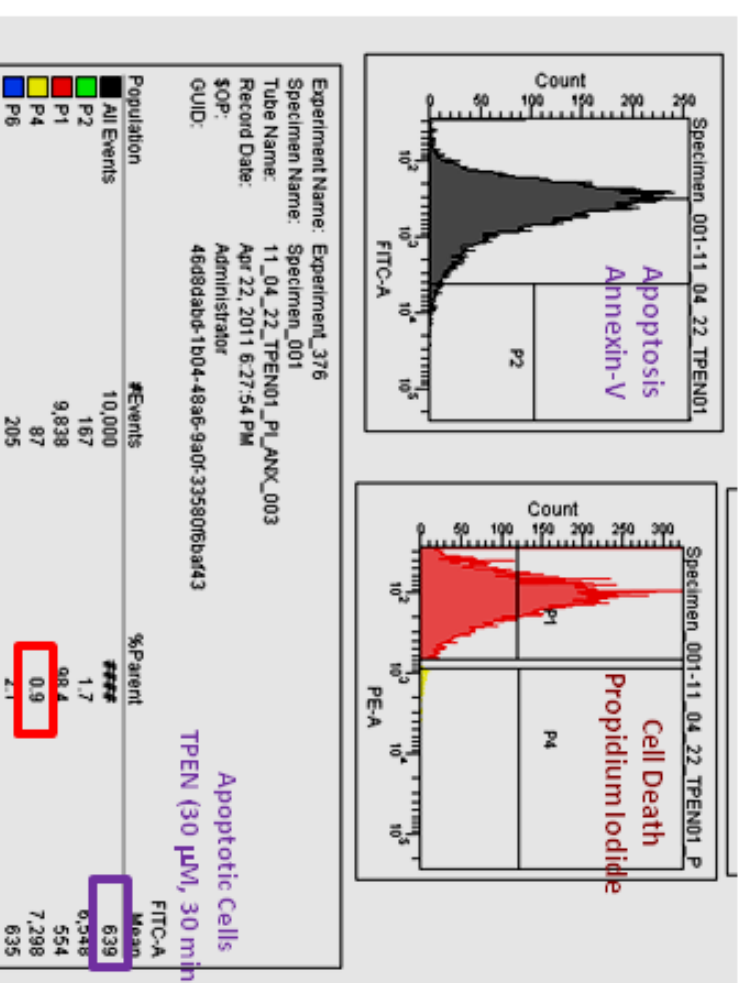
n = 3

Control



Dead Cell Population (%)  
 Negative Control

TPEN treatment



Dead Cell Population (%)  
 TPEN (30  $\mu$ M, 30 min)