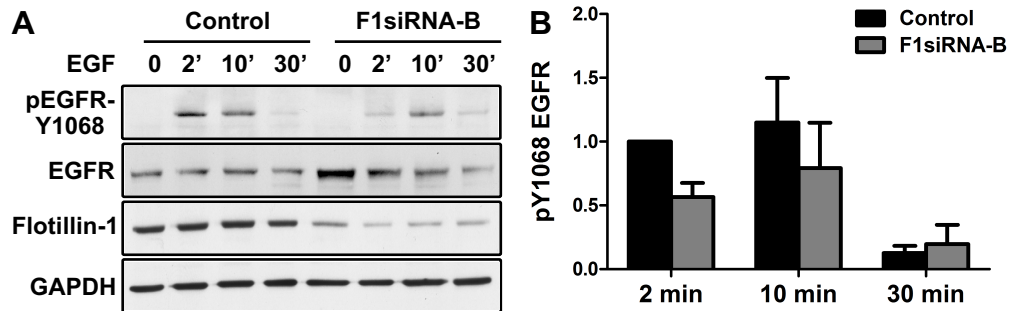


Amaddii et al. Suppl.Fig. S1



Suppl. Figure S1: Phosphorylation of Tyr1068 in EGFR is reduced upon flot-1 knockdown. Knockdown of flot-1 resulted in a decreased phosphorylation of Y1068 (A). B: Bar graph showing a densitometric quantification of the phosphorylation of Y1068. The signals were normalized to the amount of total EGFR. Bars represent the mean \pm SD of at least three individual experiments. For experimental details, see legend to Fig. 1.