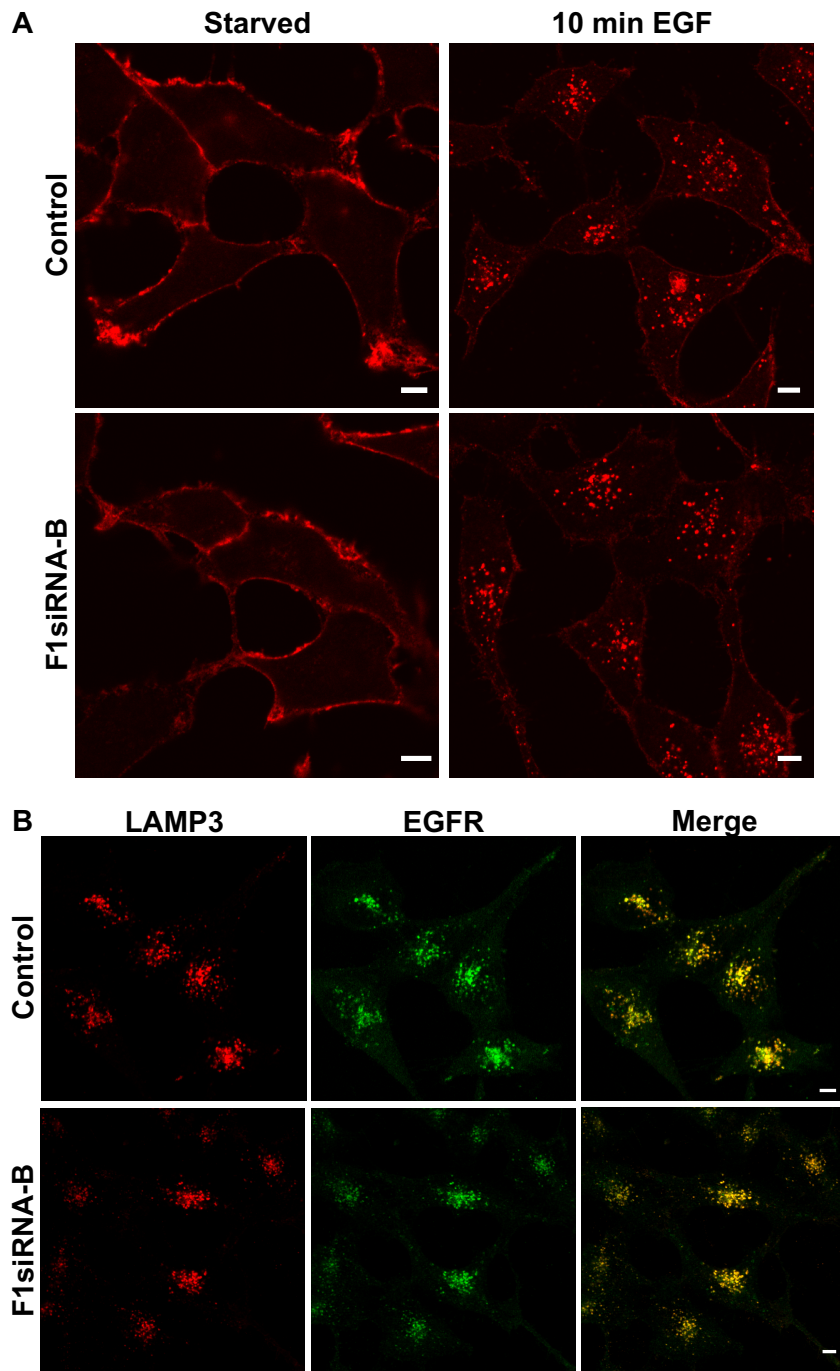


Amaddii et al. Suppl. Fig. S2



Suppl. Figure S2: Flot-1 depletion does not inhibit EGFR endocytosis. A: After 10 min of EGF stimulation, EGFR was efficiently endocytosed into endosomal compartments in cells depleted of flot-1. B: EGFR and LAMP3 colocalized in late endosomes after 15 min EGF stimulation in control and F1-KD cells. For the sake of clarity and space, the counterstaining for flotillin has been omitted in the figure since about 95% of the cells showed a knockdown.