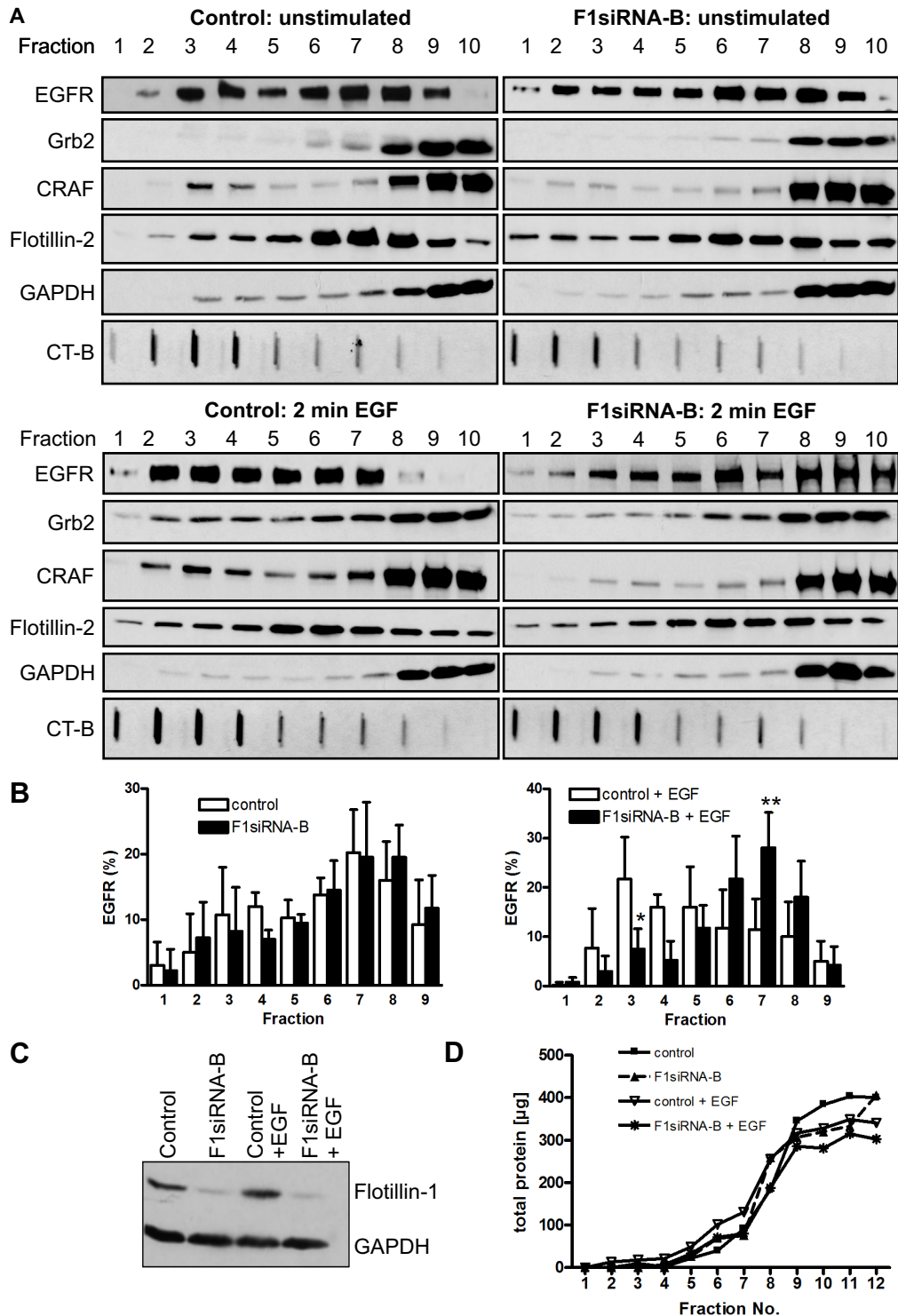


## Amaddii et al. Suppl.Fig. S3



**Suppl. Figure S3: EGFR and its signaling partners are not translocated into light membrane fractions upon Flot-1 depletion.** F1-KD or control cells were starved, stimulated or not at 37°C for 2 min with EGF and subjected to detergent free isolation of light membranes. A: shows the distribution of EGFR and its signaling partners in the gradients (see the legend of Fig. 6 for details). B: Distribution of EGFR was quantified in unstimulated and stimulated cells. C: Verification of the F1-KD by Western blot. D: Distribution of the total cellular protein in the gradient fractions.