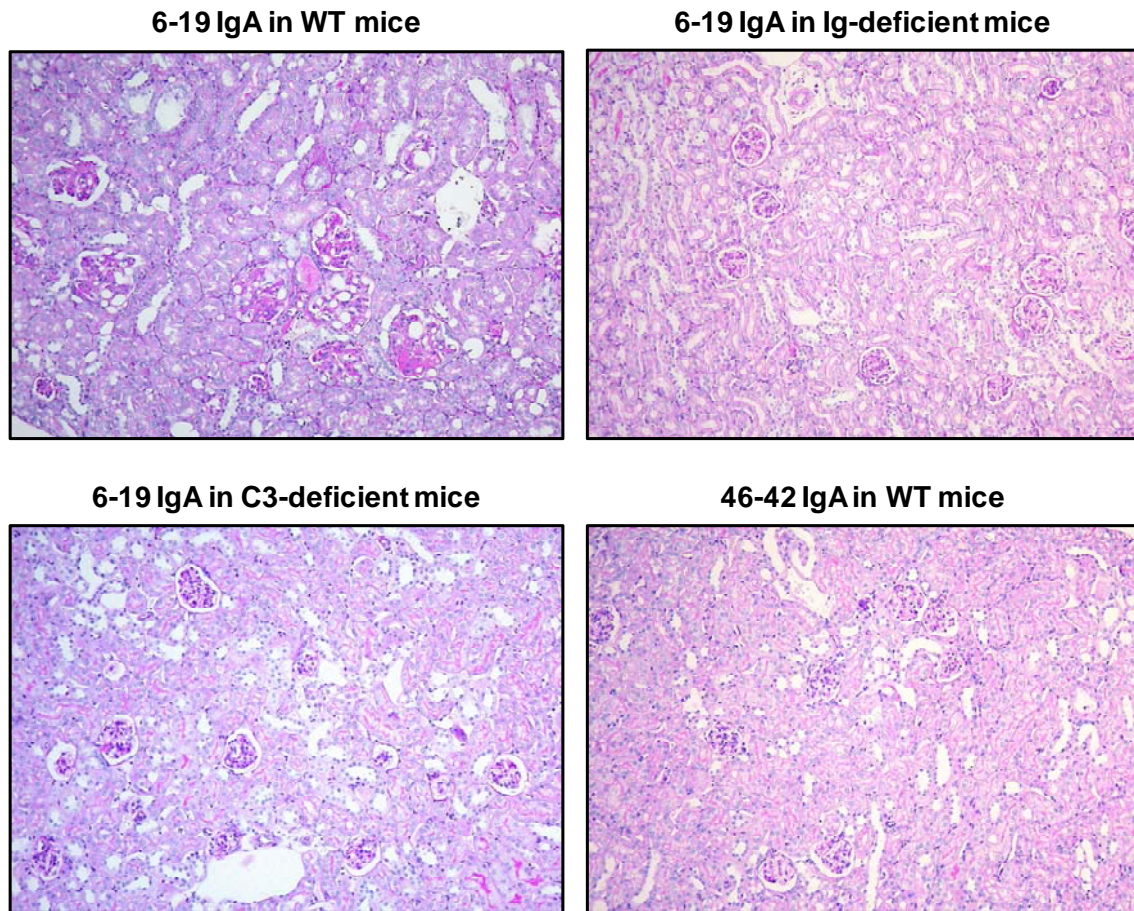


## SUPPLEMENTAL DATA



**Figure S1.** Histological appearance of kidney sections from BALB/c mice implanted with 6-19 or 46-42 IgA RF-secreting cells and in Ig- or C3-deficient mice implanted with 6-19 IgA RF-secreting cells. Note the markedly increased size of the majority of glomeruli in association with segmental expansion of mesangial cell matrix and mesangial cell proliferation in mice implanted with 6-19 IgA cells, but essentially normal histological appearance of glomeruli in WT mice implanted with 46-42 IgA cells and in Ig- or C3-deficient mice injected with 6-19 IgA cells. Periodic-acid Schiff staining; original magnification, x100.

**VH-D-JH**

1  
6-19      qvqlqqsgaelvrpghtsvkmsckasgytftnfwigwvkqrpghgl  
46-42      .....p.....k..a...l.....**sy..n**.....q..

46  
6-19      ewigniyppggdytnyiekfkgkatltadtssstaymqlssltsed  
46-42      .....**.....sss...n....s**.....v.....d.

91  
6-19      saiyycarevyyydgscgfdywgggtltvss  
46-42      ..v.....**sp111.am----**.....sv....

**Vk-Jk**

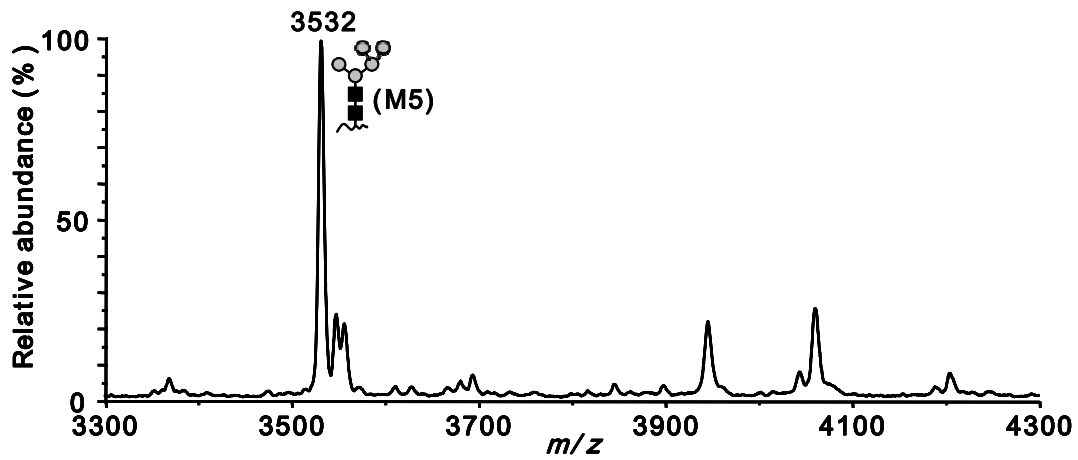
1  
6-19      dvlmtqtplslpvsldqasiscr**ssqsivhsngntylewylqkp**  
46-42      nivl..s.a..a...rqr.t....**.a.e.vds-y..sfmy**..q...

46  
6-19      gqspklliykvsnrfsqvpdrfsgsgsgtdftlkisrveaedlgv  
46-42      ..p.**.....ra..le....a**.....r.....t.dp...d.aat

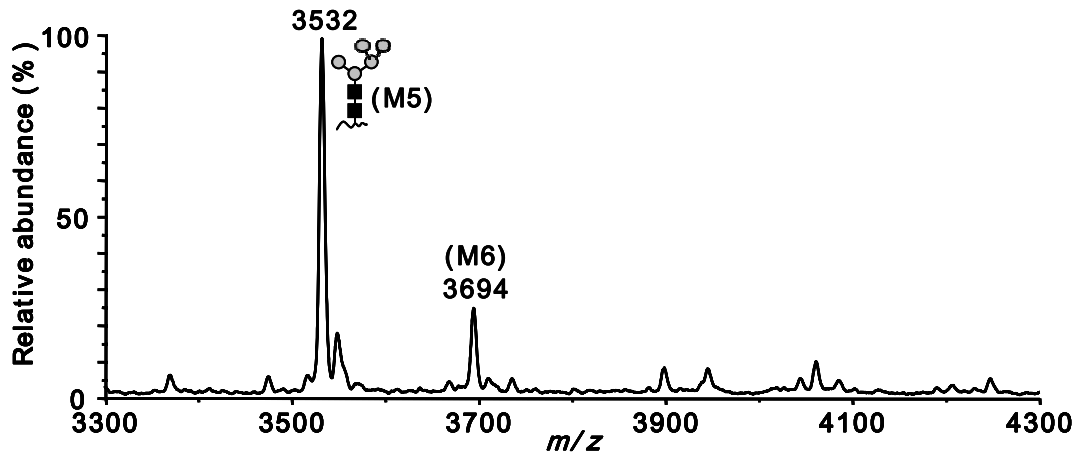
91  
6-19      yycfqqsh**vpytfgsgtkleik**  
46-42      ...qqned**.w...g**.....

**Figure S2.** Predicted amino-acid sequences of variable regions of heavy- and light chains of 6-19 and 46-42 IgA RF mAbs. CDR1, CDR2 and CDR3 are boxed (Genbank accession number: M55312, M55313, JN048666 and JN048667).

### 6-19 IgA



### 46-42 IgA



**Figure S3.** MALDI linear-TOF mass spectra of glycopeptides bearing *N*-glycans attached to N453 in the CH3 domains of 6-19 and 46-42 IgA RF mAbs. The glycoforms are indicated above corresponding glycopeptide peaks (closed square: GlcNAc; gray circle: mannose). M5 and M6 indicate the high-mannose type oligosaccharides containing five and six mannose residues, respectively. Peaks without indication of glycoforms were derived from other peptides.