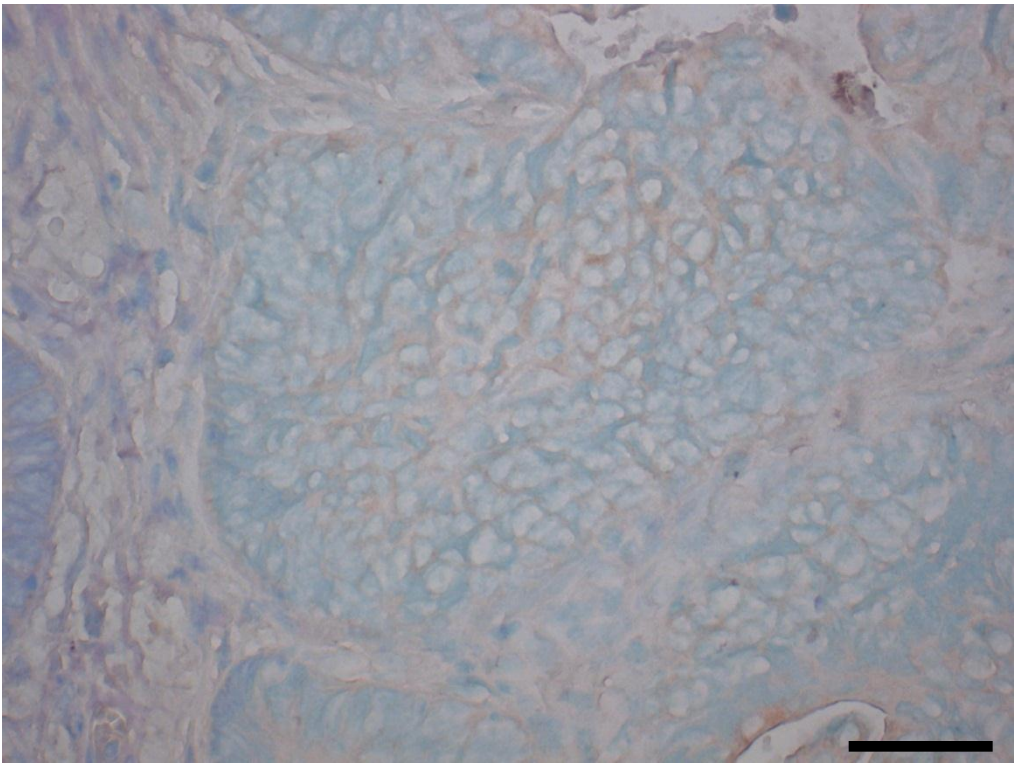


**A****B**

**Supplementary Figure 1.** Analysis of FASN expression by immunohistochemistry in tumors from colorectal cancer patients. **A)** A representative section showing FASN-negative colorectal cancer. **B)** A representative section showing FASN-positive colorectal cancer. Arrowhead indicates FASN staining in brown. Arrow indicates no FASN staining in the adjacent normal colon epithelial cells. Scale bar = 50  $\mu$ m.