



**Extensively hydrolyzed casein formula supplemented with
Lactobacillus rhamnosus GG maintains hypoallergenic
 status: Randomized double-blind, placebo-controlled
 crossover trial**

Journal:	<i>BMJ Open</i>
Manuscript ID:	bmjopen-2011-000637
Article Type:	Research
Date Submitted by the Author:	16-Nov-2011
Complete List of Authors:	Muraro, Antonella; Universita degli Studi de Padova and Regione Veneto, Food Allergy Centre Hoekstra, Maarten; University Medical Centre St. Radboud, Department of Paediatrics Meijer, Yolanda; University Medical Centre, Wilhelmina Childrens' Hospital Lifschitz, Carlos; Hospital Italiano de Buenos Aires, Departamento de Pediatria Wampler, Jennifer; Mead Johnson Nutrition, Clinical Research, Department of Medical Affairs Harris, Cheryl; Mead Johnson Nutrition, Clinical Research, Department of Medical Affairs Scalabrin, Deolinda; Mead Johnson Nutrition, Clinical Research, Department of Medical Affairs
Primary Subject Heading:	Paediatrics
Secondary Subject Heading:	Nutrition & metabolism
Keywords:	Allergy < THORACIC MEDICINE, PAEDIATRICS, NUTRITION & DIETETICS

SCHOLARONE™
 Manuscripts

1
2
3 **Extensively hydrolyzed casein formula supplemented with *Lactobacillus rhamnosus* GG**
4 **maintains hypoallergenic status: Randomized double-blind, placebo-controlled crossover**
5 **trial**
6
7
8
9

10 Antonella Muraro,¹ Maarten O Hoekstra,² Yolanda Meijer,³ Carlos H Lifschitz,⁴ Jennifer L
11 Wampler,⁵ Cheryl L Harris,⁵ and Deolinda MF Scalabrin⁵
12
13
14

15
16
17 ¹Department of Pediatrics, Università degli Studi di Padova and Regione Veneto, Food Allergy
18 Centre, Padova, Italy
19

20
21
22 ²Department of Paediatrics, University Medical Centre St Radboud, Nijmegen, The Netherlands
23

24
25 ³Wilhelmina Childrens' Hospital, University Medical Centre, Utrecht, The Netherlands
26

27
28 ⁴Departamento de Pediatría, Hospital Italiano de Buenos Aires, Buenos Aires, Argentina

29
30 ⁵Clinical Research, Department of Medical Affairs, Mead Johnson Nutrition, Evansville, IN
31
32
33

34 **Correspondence to**

35
36 Dr Jennifer L Wampler, Department of Medical Affairs, Mead Johnson Nutrition, 2400 West
37 Lloyd Expressway, Evansville, IN, 47714. E-mail: jennifer.wampler@mjn.com.
38
39
40
41
42

43 **Keywords**

44
45
46 cow's milk protein, cow's milk allergy, extensively hydrolyzed formula, double-blind placebo-
47 controlled food challenge, hypoallergenic formula, infant, *Lactobacillus* GG
48
49
50
51
52
53
54
55
56
57
58
59
60

ABSTRACT

Objective: To evaluate the hypoallergenicity of an extensively hydrolyzed (EH) casein formula supplemented with *Lactobacillus rhamnosus* GG (LGG).

Design: A prospective, randomized, double-blind, placebo-controlled crossover trial.

Setting: Two study sites in Italy and The Netherlands.

Study participants: Children with documented cow's milk allergy (CMA) were eligible for inclusion in this trial.

Interventions: After a 7-day period of strict avoidance of cow's milk protein (CMP) and other suspected food allergens, participants were tested with an EH casein formula with demonstrated hypoallergenicity (control, EHF) and a formula of the same composition with LGG added at 10^8 colony-forming units/g powder (EHF-LGG) in randomized order in a double-blind, placebo-controlled, food challenge (DBPCFC). After absence of adverse reactions in the DBPCFC, an open challenge was performed with EHF-LGG, followed by a 7-day home feeding period with the same formula.

Main outcome measure: Clinical assessment of any adverse reactions to ingestion of study formulas during the DBPCFC.

Results: For all participants with confirmed CMA ($n = 31$), the DBPCFC and open challenge were classified as negative.

Conclusion: The EH casein formula supplemented with LGG is hypoallergenic and can be recommended for infants and children allergic to cow's milk who require an alternative to formulas containing intact CMP.

Trial registration: ClinicalTrials.gov Identifier: NCT01181297

Article focus

- ▶ Hypoallergenic, extensively hydrolyzed (EH) cow's milk-based or amino acid-based formulas are recommended for management of cow's milk allergy (CMA) in formula-fed infants.
- ▶ Although *Lactobacillus rhamnosus* GG (LGG) has over 25 years of safe use as a dietary probiotic, the safety and hypoallergenic status of EH casein formula supplemented with LGG has not yet been demonstrated.

Key messages

- ▶ Supplementing the EH casein formula with LGG to provide additional benefits does not change its hypoallergenic status.
- ▶ The LGG-supplemented EH formula can be safely used for management of CMA in infants and children.

Strengths and limitations of this study

- ▶ Testing the LGG-supplemented EH formula in a properly designed double-blind, placebo-controlled, food challenge (DBPCFC) in accordance with accepted European Society of Pediatric Gastroenterology and Nutrition (ESPGHAN) and American Academy of Pediatrics (AAP) standards to establish hypoallergenicity is a major strength of this study.
- ▶ One limitation is the potentially low novelty of our finding. Because LGG is the most used dietary probiotic, accumulated safety data for LGG as a stand-alone dietary supplement in infants and adults is available.

INTRODUCTION

Breast milk is the gold standard for infant nutrition and is recommended for most infants.^{1,2} A cow's milk-based infant formula is most commonly used if a breast milk substitute is needed during the first year of life.¹ However, allergy to cow's milk protein (CMP) affects 2.2 to 2.8% of all infants.^{3,4} Diagnostic confirmation of cow's milk allergy (CMA) is based on clinical history, physical exam, and controlled elimination of CMP followed by challenge procedures, including double-blind placebo-controlled food challenge (DBPCFC).⁵ Quantification of specific IgE to cow's milk (CM) is used to diagnose IgE-mediated CMA and may eliminate the need to perform a DBPCFC for confirmation.^{5,6} A child may be considered allergic to CM with no need for DBPCFC confirmation if the specific IgE concentration by CAP RAST is \geq the 95% positive predictive value as established in earlier studies (5 kU_A/L and 15 kU_A/L, for children \leq 1 year of age and $>$ 1 year of age, respectively).^{6,7} Management of CMA is based on complete avoidance of intact CMP. One alternative, soy-based formula, is generally not recommended, particularly for infants younger than 6 months of age with non-IgE mediated manifestations of CMA, who are more likely to develop concomitant soy allergy.^{8,9} Thus, formulas with reduced allergenicity, such as those with extensively hydrolyzed (EH) protein, are recommended for formula-fed infants with CMA.^{2,8,10} EH casein formula has a long history of demonstrated efficacy and safety to manage infants and children with CMA.¹¹⁻¹³

Determination of β -lactoglobulin (β LG) level, a major CM allergen, is a first assessment of the suitability of a substitute infant formula for infants and children with CMA.¹⁴ The minute amount of β LG detected in EH casein formula¹⁴ is in the lower range of the amounts detected in breast milk (0.9 to 150 μ g/L).¹⁵ According to the European Society of Pediatric Gastroenterology and Nutrition (ESPGHAN) and the American Academy of Pediatrics (AAP), a

1
2
3 formula must be tested in a properly designed DBPCFC and can be considered hypoallergenic
4
5 when demonstrated with 95% confidence that at least 90% of infants and children with
6
7 confirmed CMA would have no reaction to the formula under double-blind, placebo-controlled
8
9 conditions.^{10 14 16} To control for possible false-negatives, a negative DBPCFC should be
10
11 followed by an open challenge (OC) with the tested formula.⁵ After negative challenges, further
12
13 assessment of tolerance to the tested formula during a 7-day feeding period to detect potential
14
15 late-onset reactions is also recommended.^{10 14}
16
17
18
19

20 Probiotics are live microorganisms which, when administered in adequate amounts, confer a
21
22 health benefit to the host.¹⁷ *Lactobacillus rhamnosus* GG (LGG) is the most studied probiotic,
23
24 with demonstrated benefits when added to an EH formula, including decreased severity of atopic
25
26 dermatitis (AD),^{18 19} reduced intestinal inflammation^{18 20} and faster induction of tolerance²¹ in
27
28 infants with CMA, and improved recovery from allergic colitis.²⁰ We previously demonstrated
29
30 LGG was well tolerated, promoted normal growth, and transiently colonized the intestine when
31
32 added to an EH casein formula fed to healthy term infants.^{22 23} An EH formula with the same
33
34 casein hydrolysate and many years of clinical experience of safety use in children with CMA
35
36 was demonstrated to be hypoallergenic in those children in a DBPCFC trial.¹³ However, the
37
38 hypoallergenic status of the EH casein formula with added LGG has not yet been demonstrated.
39
40
41
42
43
44
45
46
47
48
49
50
51
52
53
54
55
56
57
58
59
60

In the current study, we evaluated if LGG addition to this EH casein formula affected its hypoallergenic status for use in management of confirmed CMA in infants and children.

METHODS

Study design and participants

A randomized, controlled, prospective trial was conducted at two study sites to assess the hypoallergenicity of an EH casein formula with the same formulation of a previously existing formula (Nutramigen[®], Mead Johnson & Company, Evansville, IN; control, EHF) that differed only in supplementation with LGG at 10^8 colony-forming units/g of powder (EHF-LGG). Each powdered formula provided 2.8 g protein/100 kcal. The LGG raw material used in the formula demonstrated absence of β LG, as determined by an ELISA test with a detection limit of 0.1 μ g/g (data on file).

Infants and children ≤ 14 years of age with confirmed CMA were eligible for this study if their allergic manifestations were under sufficient control so that a positive response to a food challenge would be recognizable. In addition, participants should have successfully consumed the control formula within 1 week of study enrollment. Exclusion criteria were presence of systemic disease or illness that could compromise participation in the study, use of beta-blockers within 12 hours of DBPCFC, use of short-acting, medium-acting, or long-acting antihistamines more than once within 3, 7, or 21 days of DBPCFC, respectively, or oral steroids within 21 days of DBPCFC. Adverse events were recorded throughout the study.

Confirmation of CMA

Confirmation of CMA required one of the following criteria: 1) a positive DBPCFC to CM or CM-based formula within 6 months of study enrollment; 2) a positive confirmatory value of CAP RAST (Pharmacia, Uppsala, Sweden) to CM within 6 months of study enrollment (≥ 5 kU_A/L in participants ≤ 1 year of age or ≥ 15 kU_A/L in participants > 1 year of age); 3) a documented significant adverse reaction to inadvertent ingestion of CM or CM-based formula

1
2
3 within 6 months of enrollment plus a positive DBPCFC or a confirmatory CAP RAST value to
4
5 CM within 12 months of enrollment; or 4) a physician-documented anaphylaxis to CM or CM-
6
7 based formula within 6 months of study enrollment plus a confirmatory CAP RAST value to CM
8
9 within 12 months of enrollment.
10
11

12 **DBPCFC and Open Challenge (OC)**

14
15 The hypoallergenicity of the EHF-LGG formula was evaluated in a DBPCFC and OC, as
16
17 described previously.²⁴ A 7-day period of strict elimination of CMP and other suspected food
18
19 allergens preceded the DBPCFC (Figure 1). On Study Day 1 prior to the beginning of the
20
21 DBPCFC and OC, participants underwent a physical examination and medical history and status
22
23 of allergic diseases was recorded. Participants were either asymptomatic or allergic
24
25 manifestations had been stabilized for a minimum of 7 days prior to the DBPCFC. The study
26
27 sponsor had issued a list of 6-digit participant numbers to each study site and the study
28
29 coordinator sequentially assigned a participant number to each participant. The sponsor also
30
31 created a separate computer-generated randomization list of participant numbers that indicated
32
33 the order in which each study formula should be offered in the DBPCFC challenge. At both
34
35 study sites, the participant number was provided to a third-party pharmacist who referenced the
36
37 number against the randomization list in order to prepare the EHF and EHF-LGG formulas in the
38
39 assigned randomized order for each participant.
40
41
42
43
44

45
46 In the DBPCFC, the EHF and EHF-LGG formulas fed in randomized order were
47
48 administered in an initial 5-10 mL aliquot followed by gradually increasing volumes over a
49
50 maximum period of 120 minutes to provide a cumulative volume of 150 mL. A minimum
51
52 interval of approximately 120 minutes between the end of the challenge with the first formula
53
54 separated the beginning of the challenge with the second formula. Times of consumption and
55
56
57
58
59
60

1
2
3 amounts of study formula consumed during each challenge were recorded. Any signs or
4
5 symptoms present before (baseline), during, or after the DBPCFC and OC were recorded using a
6
7 scoring system to rate severity. The skin was observed for rash, urticaria/angioedema, or
8
9 pruritus, with the percentage of body area affected recorded. The upper respiratory system was
10
11 assessed for sneezing/itching, nasal congestion, rhinorrhea, or laryngeal symptoms, and the
12
13 lower respiratory system was assessed for wheezing. The gastrointestinal system was evaluated
14
15 for subjective symptoms such as nausea and abdominal pain and objective symptoms such as
16
17 vomiting and diarrhea. Any changes in signs or symptoms from baseline would have resulted in
18
19 classifying the challenge as positive and discontinuing the participant from the study. If the
20
21 DBPCFC was negative, an OC with 150 to 250 mL of the EHF-LGG followed.
22
23
24
25

26 27 **Home feeding period**

28
29 To assess long-term tolerance and reveal any false-negative results to the challenges, all
30
31 participants with negative responses to both the DBPCFC and OC consumed a minimum of 240
32
33 mL of EHF-LGG formula/day during a 7-day home feeding period. Participants' parents
34
35 recorded in a daily diary volume of formula consumed; presence and severity of vomiting,
36
37 diarrhea, rash, runny nose, wheezing, or any other symptoms (rated as mild, moderate, or
38
39 excessive); number of bowel movements; and overall formula acceptance and tolerance (rated as
40
41 satisfactory or unsatisfactory). The investigator completed a final evaluation at the end of the 7-
42
43 day home feeding period.
44
45
46
47

48 **Statistical analysis** Sample size determination

49
50 In a study with a binomial outcome (reaction versus no reaction), the sample size can be
51
52 determined by calculating a binomial confidence interval (CI) for p , the probability of having a
53
54 reaction, as demonstrated previously.¹³ In the case of 0 observed reactions, the upper 95% CI for
55
56
57
58
59
60

1
2
3 p is less than 0.10 when the sample size is 29 participants. Thus studying at least 29 participants
4
5 and having none classified as positive in the DBPBFC allows the conclusion that the study
6
7 provided 95% confidence that at least 90% of children with confirmed CMA who ingest the
8
9 tested formula would have no reaction.^{10 16} Data was prepared using SAS[®] version 8 (Cary, NC).
10
11

12 **Ethics approval**

13
14 The research protocol and informed consent form observing the Declaration of Helsinki
15
16 (including October 1996 amendment) were approved by the Medical Ethics Committees of the
17
18 Department of Pediatrics, Università degli Studi di Padova and Regione Veneto, Food Allergy
19
20 Centre, Padova, Italy, and the Wilhelmina Children's Hospital, University Medical Centre,
21
22
23
24
25 Utrecht, The Netherlands. The study complied with good clinical practices.
26
27
28
29
30
31
32
33
34
35
36
37
38
39
40
41
42
43
44
45
46
47
48
49
50
51
52
53
54
55
56
57
58
59
60

RESULTS

Of the 34 children enrolled in the study between April 2003 and February 2004, a total of 33 (males, 19; females, 14) completed the DBPCFC, OC, and 7-day home feeding period (one participant who was enrolled but did not meet inclusion criteria was discontinued from the study) (Figure 1). Two participants were excluded from further analyses because CAP RAST to CM was lower than the confirmatory value for CMA. Neither participant experienced allergic reactions to the study formulas. Of the remaining 31 participants, 13 were <1 year, 17 were 1 to 3 years, and 1 was 11 years of age. The primary criterion used to confirm ongoing CMA, values for CAP RAST to CM, and symptoms evoked after the most recent inadvertent CMP intake or DBPCFC are summarized in table 1 for these participants.

Ongoing allergic diseases including AD, asthma, and/or allergic rhinitis were noted in 29 participants at study entry. Two participants reported a history of AD but no active allergic manifestation at study entry. Participants' status of allergic manifestations and presence of food allergies other than CMA at enrollment are shown in figures 2a and 2b, respectively. Ongoing allergy to multiple foods was reported for 29 participants, with 18 participants having 2 or more reported food allergies in addition to CMA.

After the pre-challenge 7-day period of CMP elimination, 29 of 31 participants had no allergic symptoms and remained asymptomatic throughout the DBPCFC and OC. Of the two remaining participants, one had no change in the mild rhinorrhea reported at baseline, and one had an improvement in the pruritus and rash reported at baseline. The DBPCFC and OC were thus classified as negative for all participants. Parent-recorded diaries during the home feeding period were returned for 30 participants and indicated that overall acceptance and tolerance of the EHF-LGG formula was generally good. Mean daily intake (mL/day \pm SD) reported was

1
2
3 546±251 and 522±132 for participants <1 year and 1 to 3 years of age, respectively, and 561 for
4
5
6 the 11-year-old participant. Mean daily stool frequencies (± SD) were 1.9±0.5 and 1.7±0.9 for
7
8
9 participants <1 year and 1 to 3 years of age, respectively, and 1.3 for the 11-year-old. No serious
10
11 adverse events were reported during the DBPCFC, OC, or home feeding period.
12
13
14
15
16
17
18
19
20
21
22
23
24
25
26
27
28
29
30
31
32
33
34
35
36
37
38
39
40
41
42
43
44
45
46
47
48
49
50
51
52
53
54
55
56
57
58
59
60

For peer review only

DISCUSSION

These findings demonstrate that a hypoallergenic EH casein hydrolysate formula remains hypoallergenic following the addition of LGG, satisfying both ESPHGAN and AAP guidelines.

In this study all 31 study participants with confirmed CMA had a previous history of experiencing one or more types of allergic symptoms in the skin, respiratory and/or gastrointestinal systems, or had systemic anaphylaxis after ingestion of CMP, meeting recognized criterion to confirm CMA using a combination of convincing symptoms upon exposure to CMP and a strongly positive confirmatory value of specific IgE to CM by RAST.^{6 7}

²⁴ In accordance with reports of sensitization to other food allergens commonly observed in children with CMA,^{13 24} allergy to one or more foods in addition to CM was reported in 94% of participants in this study. After 7 days of strict CMP elimination from the diet, 29 of 31 participants had no allergic symptoms and remained asymptomatic throughout the DBPCFC and OC, whereas the other two had mild symptoms that either did not change or improved during the challenges. No serious adverse events were reported during the DBPCFC, OC, or the 7-day home feeding period.

The addition of probiotics in formula used for management of CMA requires that they be proven safe and are well tolerated. LGG has over 25 years of safe use²⁵ including administration to preterm infants²⁶ or to infants perinatally who were at high risk of allergy, in whom normal growth was demonstrated up to 2 to 4 years of age.^{27 28} To justify use, addition of a probiotic must also be shown to be of benefit. Early gut microbial colonization is associated with modulation of inflammation and expression of allergy.^{18 20 29 30} LGG administration to atopic pregnant women followed by postnatal administration to their infants was associated with lower incidence of AD at 2, 4, and 7 years of age compared to placebo.³⁰ Additionally, anti-

1
2
3 inflammatory effects of LGG accompanied by amelioration of symptoms were observed in
4
5 infants experiencing AD as a manifestation of CMA.^{19,31} In a study using fecal calprotectin as a
6
7 marker of intestinal inflammation, infants with presumptive allergic colitis were randomized to
8
9 receive an EH formula with or without LGG and the same casein hydrolysate as the formulas in
10
11 the current study.²⁰ After a 4-week feeding period, blood in stools characteristic of allergic
12
13 colitis disappeared in all infants in the LGG-supplemented group versus only 63% in the non-
14
15 supplemented group. The LGG-supplemented group also experienced a larger decrease in fecal
16
17 calprotectin level. In a recent study, EH casein formula with LGG was demonstrated to
18
19 accelerate the time of acquisition of tolerance to CMP in infants with CMA after 6 and 12
20
21 months of feeding.²¹

22
23
24
25
26
27 We previously demonstrated that LGG added to an EH casein formula was well tolerated and
28
29 transiently colonized the intestinal tract of healthy, term infants.²² Growth and other nutrition
30
31 parameters, including circulating fatty acid levels, were demonstrated to be normal in healthy
32
33 term infants who received this formula up to 4 months of age.²³ Available data suggests that the
34
35 LGG-supplemented EH casein formula assessed in the current study provides additional benefits
36
37 of better management of allergic colitis, as well as faster tolerance acquisition, in infants with
38
39 CMA that are not observed with the non-supplemented formula. We tested the EH casein
40
41 formula supplemented with LGG according to established criteria and demonstrated its
42
43 hypoallergenic status is maintained. Therefore, this formula can be recommended for infants and
44
45 children with CMA who require an alternative to formulas containing intact CMP.
46
47
48
49
50
51
52
53
54
55
56
57
58
59
60

Acknowledgements

The authors wish to thank study site staff for their cooperation. The participation of parents and infants in this study is greatly acknowledged.

Funding

The study was sponsored by Mead Johnson Nutrition.

Competing interests

AM, MOH, and YM have received research support from Mead Johnson Nutrition. CHL is a former employee of Mead Johnson Nutrition. JLW, CLH, and DMFS work in the Department of Medical Affairs at Mead Johnson Nutrition.

Data sharing statement

No additional data available.

Contributorship

AM, YM, and MOH helped design the study, assessed study participants and collected study data, interpreted data, and reviewed and revised the manuscript. CHL interpreted data and reviewed and revised the manuscript. JLW and DMFS interpreted data and drafted the manuscript. CLH prepared and interpreted data, and reviewed the manuscript. All authors contributed to the intellectual content and approved the final version.

The Corresponding Author has the right to grant on behalf of all authors and does grant on behalf of all authors, an exclusive licence (or non-exclusive for government employees) on a worldwide basis to the BMJ Group and co-owners or contracting owning societies (where published by the BMJ Group on their behalf), and its Licensees to permit this article (if accepted)

1
2
3
4
5
6
7
8
9
10
11
12
13
14
15
16
17
18
19
20
21
22
23
24
25
26
27
28
29
30
31
32
33
34
35
36
37
38
39
40
41
42
43
44
45
46
47
48
49
50
51
52
53
54
55
56
57
58
59
60

to be published in BMJ open and any other BMJ Group products and to exploit all subsidiary rights, as set out in our licence.

For peer review only

Table 1 Participants with confirmed CMA: primary criterion used to confirm CMA, age at CAP RAST to CM and CAP RAST values, and symptoms evoked by the participants' most recent exposure to CMP

Primary criterion to confirm CMA	Age (years)	CAP RAST to CM (kU _A /L)	Symptoms evoked after most recent inadvertent CMP intake or DBPCFC to CMP
Positive DBPCFC to CMP within 6 mo of study enrollment	0.7	70	pruritus, rash, urticaria/angioedema, rhinorrhea
	0.9	12.2	pruritus, rash, urticaria/angioedema
	1.1	<0.35	pruritus, rash
	1.3	>100	pruritus, rash, urticaria/angioedema
	1.4	9.9	pruritus, rash, urticaria/angioedema
	1.6	15.7	urticaria/angioedema, sneezing/itching, laryngeal edema
	11.6	12.3	laryngeal edema
Confirmatory CAP RAST to CM within 6 mo of study enrollment	0.6	7.16	pruritus, rash, urticaria/angioedema, wheezing
	0.8	17.1	pruritus, rash, urticaria/angioedema
	1.5	22.4	pruritus, rash, urticaria/angioedema, sneezing/itching
	1.6	34.5	pruritus, rash, vomiting
	2.3	>100	*
	2.4	61.8	pruritus, rash, urticaria/angioedema, vomiting
Adverse reaction to inadvertent CMP intake within 6 mo and positive CAP RAST to CM within 12 mo of study enrollment	0.3	68.3	pruritus, rash, urticaria/angioedema, nasal congestion, sneezing/itching
	0.4	6.09	pruritus, rash, urticaria/angioedema, vomiting
	0.5	4.59 [†]	pruritus, rash, urticaria/angioedema, nasal congestion, sneezing/itching
	0.6	10.5	pruritus, rash, urticaria/angioedema, vomiting
	0.6	9.01	pruritus, urticaria/angioedema, nasal congestion, sneezing/itching
	0.6	57.3	pruritus, rash, urticaria/angioedema, nasal congestion, sneezing/itching, laryngeal edema
	0.7	7.46	pruritus, rash, urticaria/angioedema, nasal congestion, rhinorrhea, sneezing/itching
	0.7	9.05	pruritus, rash, urticaria/angioedema, rhinorrhea, sneezing/itching
	0.8	6.84	pruritus, rash, wheezing, vomiting
	1.0	29.1	pruritus, rash, urticaria/angioedema
	1.0	29.5	pruritus, rash, urticaria/angioedema
	1.1	60.8	pruritus, rash, urticaria/angioedema, vomiting
	1.3	>100	urticaria/angioedema, rhinorrhea, wheezing, diarrhea, vomiting
1.4	23.9	pruritus, rash, urticaria/angioedema, vomiting	
1.5	25.0	pruritus, rash, urticaria/angioedema, vomiting	
1.6	30.5	pruritus, rash, urticaria/angioedema, rhinorrhea, sneezing/itching	
Anaphylaxis to CMP within 6 mo and positive CAP RAST to CM within 12 mo of study enrollment	0.3	8.01	pruritus, rash, urticaria/angioedema, systemic anaphylaxis
	0.4	5	pruritus, rash, urticaria/angioedema, nasal congestion, rhinorrhea, sneezing/itching, systemic anaphylaxis

*Participant had a history suggestive of CMA beginning at 6 mo of age and ongoing symptoms of AD at enrollment

[†]Participant had sufficient evidence of CMA (exhibited multiple symptoms upon inadvertent CM intake within 3 mo of enrollment) although CAP RAST to CM was slightly < 5 kU_A/L

FIGURES

Figure 1 Flow of participants through the double-blind placebo-controlled food challenge (DBPCFC), open challenge (OC), and home feeding period (EHF: control formula; EHF-LGG: tested formula; CMP: cow's milk protein; CMA: cow's milk allergy)

Figure 2 Medical history of participants with confirmed CMA (n=31): 2a) Ongoing and resolved clinical allergic manifestations at enrollment; 2b) Number of participants who reported allergy to foods other than cow's milk at enrollment.

REFERENCES

1. Gartner LM, Morton J, Lawrence RA, *et al.* Breastfeeding and the use of human milk. *Pediatrics*. 2005;**115**:496-506.
2. Boyce JA, Assa'ad A, Burks AW, *et al.* Guidelines for the diagnosis and management of food allergy in the United States: report of the NIAID-sponsored expert panel. *J Allergy Clin Immunol*. 2010;**126**:S1-58.
3. Höst A, Halken S, Jacobsen HP, *et al.* Clinical course of cow's milk protein allergy/intolerance and atopic diseases in childhood. *Pediatr Allergy Immunol*. 2002;**13** Suppl 15:23-8.
4. Schrandt JJ, van den Bogart JP, Forget PP, *et al.* Cow's milk protein intolerance in infants under 1 year of age: a prospective epidemiological study. *Eur J Pediatr*. 1993;**152**:640-4.
5. Bindslev-Jensen C, Ballmer-Weber BK, Bengtsson U, *et al.* Standardization of food challenges in patients with immediate reactions to foods--position paper from the European Academy of Allergology and Clinical Immunology. *Allergy*. 2004;**59**:690-7.
6. Garcia-Ara C, Boyano-Martinez T, Diaz-Pena JM, *et al.* Specific IgE levels in the diagnosis of immediate hypersensitivity to cows' milk protein in the infant. *J Allergy Clin Immunol*. 2001;**107**:185-90.
7. Sampson HA. Utility of food-specific IgE concentrations in predicting symptomatic food allergy. *J Allergy Clin Immunol*. 2001;**107**:891-6.
8. Vandenas Y, Koletzko S, Isolauri E, *et al.* Guidelines for the diagnosis and management of cow's milk protein allergy in infants. *Arch Dis Child*. 2007;**92**:902-8.
9. Bhatia J, Greer F. Use of soy protein-based formulas in infant feeding. *Pediatrics*. 2008;**121**:1062-8.

- 1
2
3 10. American Academy of Pediatrics. Committee on Nutrition. Hypoallergenic infant
4
5 formulas. *Pediatrics*. 2000;**106**:346-9.
- 6
7 11. Oldæus G, Björkstén B, Einarsson R, *et al*. Antigenicity and allergenicity of cow milk
8
9 hydrolysates intended for infant feeding. *Pediatr Allergy Immunol*. 1991;**2**:156-64.
- 10
11 12. Oldæus G, Bradley CK, Björkstén B, *et al*. Allergenicity screening of
12
13 "hypoallergenic" milk-based formulas. *J Allergy Clin Immunol*. 1992;**90**:133-5.
- 14
15 13. Sampson HA, Bernhisel-Broadbent J, Yang E, *et al*. Safety of casein hydrolysate
16
17 formula in children with cow milk allergy. *J Pediatr*. 1991;**118**:520-5.
- 18
19 14. Isolauri E, Sutas Y, Makinen-Kiljunen S, *et al*. Efficacy and safety of hydrolyzed cow
20
21 milk and amino acid-derived formulas in infants with cow milk allergy. *J Pediatr*.
22
23 1995;**127**:550-7.
- 24
25 15. Host A, Husby S, Hansen LG, *et al*. Bovine beta-lactoglobulin in human milk from
26
27 atopic and non-atopic mothers. Relationship to maternal intake of homogenized and
28
29 unhomogenized milk. *Clin Exp Allergy*. 1990;**20**:383-7.
- 30
31 16. Host A, Koletzko B, Dreborg S, *et al*. Dietary products used in infants for treatment
32
33 and prevention of food allergy. Joint Statement of the European Society for Paediatric
34
35 Allergology and Clinical Immunology (ESPACI) Committee on Hypoallergenic Formulas
36
37 and the European Society for Paediatric Gastroenterology, Hepatology and Nutrition
38
39 (ESPGHAN) Committee on Nutrition. *Arch Dis Child*. 1999;**81**:80-4.
- 40
41 17. Guarner F, Schaafsma GJ. Probiotics. *Int J Food Microbiol*. 1998;**39**:237-8.
- 42
43 18. Isolauri E, Arvola T, Sutas Y, *et al*. Probiotics in the management of atopic eczema.
44
45
46
47
48
49
50
51 *Clin Exp Allergy*. 2000;**30**:1604-10.
- 52
53 19. Viljanen M, Savilahti E, Haahtela T, *et al*. Probiotics in the treatment of atopic
54
55 eczema/dermatitis syndrome in infants: a double-blind placebo-controlled trial. *Allergy*.
56
57 2005;**60**:494-500.
- 58
59
60

- 1
2
3 20. Baldassarre ME, Laforgia N, Fanelli M, *et al.* *Lactobacillus* GG improves recovery in
4 infants with blood in the stools and presumptive allergic colitis compared with extensively
5 hydrolyzed formula alone. *J Pediatr.* 2010;**156**:397-401.
6
7
8
9
10 21. Canani RB, Nocerino R, Terrin G, *et al.* Effect of extensively hydrolyzed casein
11 formula supplemented with *Lactobacillus* GG on tolerance acquisition in infants with cow's
12 milk allergy: a randomized trial. *J Allergy Clin Immunol.* in press.
13
14
15
16 22. Petschow BW, Figueroa R, Harris CL, *et al.* Effects of feeding an infant formula
17 containing *Lactobacillus* GG on the colonization of the intestine: a dose-response study in
18 healthy infants. *J Clin Gastroenterol.* 2005;**39**:786-90.
19
20
21
22
23 23. Scalabrin DM, Johnston WH, Hoffman DR, *et al.* Growth and tolerance of healthy
24 term infants receiving hydrolyzed infant formulas supplemented with *Lactobacillus*
25 *rhamnosus* GG: randomized, double-blind, controlled trial. *Clin Pediatr (Phila).*
26
27
28
29
30 2009;**48**:734-44.
31
32 24. Burks W, Jones SM, Berseth CL, *et al.* Hypoallergenicity and effects on growth and
33 tolerance of a new amino acid-based formula with docosahexaenoic acid and arachidonic
34 acid. *J Pediatr.* 2008;**153**:266-71.
35
36
37
38
39 25. Gorbach SL. The discovery of *Lactobacillus* GG. (*Lactobacillus* GG). *Nutr Today.*
40
41 1996;**31**:2S-3S.
42
43 26. Stansbridge EM, Walker V, Hall MA, *et al.* Effects of feeding premature infants with
44 *Lactobacillus* GG on gut fermentation. *Arch Dis Child.* 1993;**69**:488-92.
45
46
47 27. Laitinen K, Kalliomaki M, Poussa T, *et al.* Evaluation of diet and growth in children
48 with and without atopic eczema: follow-up study from birth to 4 years. *Br J Nutr.*
49
50 2005;**94**:565-74.
51
52
53
54
55
56
57
58
59
60

- 1
2
3 28. Rinne M, Kalliomaki M, Salminen S, *et al.* Probiotic intervention in the first months
4 of life: short-term effects on gastrointestinal symptoms and long-term effects on gut
5 microbiota. *J Pediatr Gastroenterol Nutr.* 2006;**43**:200-5.
6
7
8
9 29. Pessi T, Sutas Y, Hurme M, *et al.* Interleukin-10 generation in atopic children
10 following oral *Lactobacillus rhamnosus* GG. *Clin Exp Allergy.* 2000;**30**:1804-8.
11
12
13 30. Kalliomäki M, Salminen S, Poussa T, *et al.* Probiotics during the first 7 years of life:
14 A cumulative risk reduction of eczema in a randomized, placebo-controlled trial. *J Allergy*
15 *Clin Immunol.* 2007;**119**:1019-21.
16
17
18
19 31. Majamaa H, Isolauri E. Probiotics: a novel approach in the management of food
20 allergy. *J Allergy Clin Immunol.* 1997;**99**:179-85.
21
22
23
24
25
26
27
28
29
30
31
32
33
34
35
36
37
38
39
40
41
42
43
44
45
46
47
48
49
50
51
52
53
54
55
56
57
58
59
60

1
2
3
4
5
6
7
8
9
10
11
12
13
14
15
16
17
18
19
20
21
22
23
24
25
26
27
28
29
30
31
32
33
34
35
36
37
38
39
40
41
42
43
44
45
46
47
48
49
50
51
52
53
54
55
56
57
58
59
60

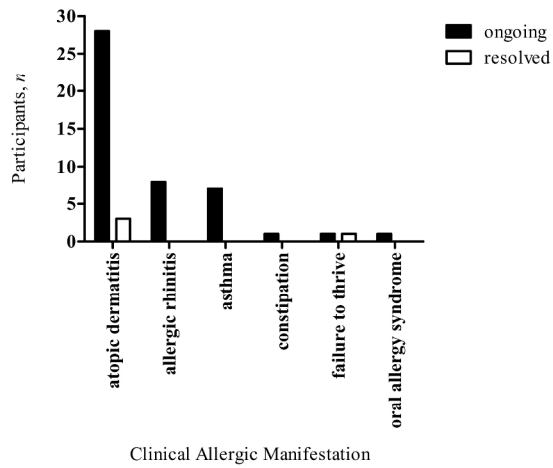


Figure 2a

Medical history of participants with confirmed CMA (n=31): 2a) Ongoing and resolved clinical allergic manifestations at enrollment.
270x352mm (300 x 300 DPI)

1
2
3
4
5
6
7
8
9
10
11
12
13
14
15
16
17
18
19
20
21
22
23
24
25
26
27
28
29
30
31
32
33
34
35
36
37
38
39
40
41
42
43
44
45
46
47
48
49
50
51
52
53
54
55
56
57
58
59
60

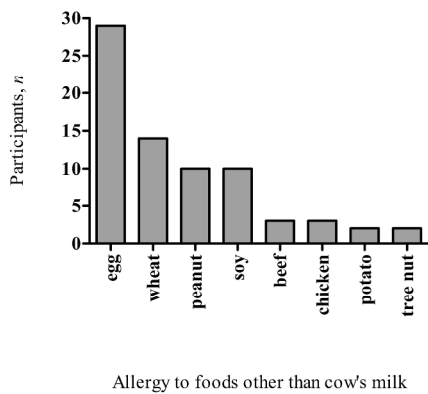
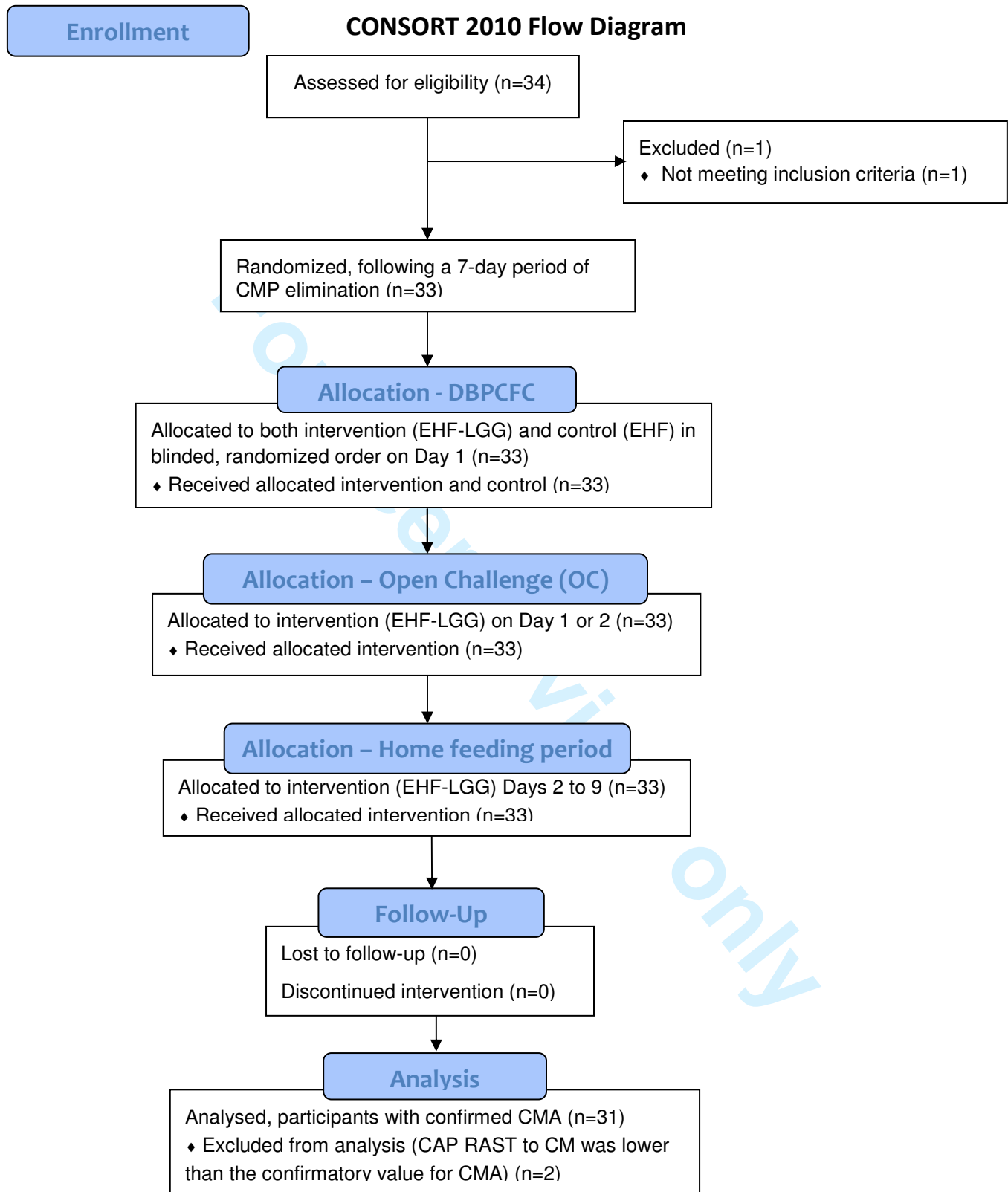


Figure 2b

2b) Number of participants who reported allergy to foods other than cow's milk at enrollment.
270x352mm (300 x 300 DPI)





CONSORT 2010 checklist of information to include when reporting a randomised trial*

Section/Topic	Item No	Checklist item	Reported on page No
Title and abstract			
	1a	Identification as a randomised trial in the title	1
	1b	Structured summary of trial design, methods, results, and conclusions (for specific guidance see CONSORT for abstracts)	2
Introduction			
Background and objectives	2a	Scientific background and explanation of rationale	4-5
	2b	Specific objectives or hypotheses	4
Methods			
Trial design	3a	Description of trial design (such as parallel, factorial) including allocation ratio	6-7
	3b	Important changes to methods after trial commencement (such as eligibility criteria), with reasons	n/a
Participants	4a	Eligibility criteria for participants	6
	4b	Settings and locations where the data were collected	10
Interventions	5	The interventions for each group with sufficient details to allow replication, including how and when they were actually administered	6-8
Outcomes	6a	Completely defined pre-specified primary and secondary outcome measures, including how and when they were assessed	8
	6b	Any changes to trial outcomes after the trial commenced, with reasons	n/a
Sample size	7a	How sample size was determined	8-9
	7b	When applicable, explanation of any interim analyses and stopping guidelines	n/a
Randomisation:			
Sequence generation	8a	Method used to generate the random allocation sequence	7
	8b	Type of randomisation; details of any restriction (such as blocking and block size)	7
Allocation concealment mechanism	9	Mechanism used to implement the random allocation sequence (such as sequentially numbered containers), describing any steps taken to conceal the sequence until interventions were assigned	7
Implementation	10	Who generated the random allocation sequence, who enrolled participants, and who assigned participants to interventions	7
Blinding	11a	If done, who was blinded after assignment to interventions (for example, participants, care providers, those	7

		assessing outcomes) and how	
	11b	If relevant, description of the similarity of interventions	6
Statistical methods	12a	Statistical methods used to compare groups for primary and secondary outcomes	8-9
	12b	Methods for additional analyses, such as subgroup analyses and adjusted analyses	n/a
Results			
Participant flow (a diagram is strongly recommended)	13a	For each group, the numbers of participants who were randomly assigned, received intended treatment, and were analysed for the primary outcome	11
	13b	For each group, losses and exclusions after randomisation, together with reasons	11
Recruitment	14a	Dates defining the periods of recruitment and follow-up	11
	14b	Why the trial ended or was stopped	n/a
Baseline data	15	A table showing baseline demographic and clinical characteristics for each group	16
Numbers analysed	16	For each group, number of participants (denominator) included in each analysis and whether the analysis was by original assigned groups	n/a
Outcomes and estimation	17a	For each primary and secondary outcome, results for each group, and the estimated effect size and its precision (such as 95% confidence interval)	11
	17b	For binary outcomes, presentation of both absolute and relative effect sizes is recommended	n/a
Ancillary analyses	18	Results of any other analyses performed, including subgroup analyses and adjusted analyses, distinguishing pre-specified from exploratory	n/a
Harms	19	All important harms or unintended effects in each group (for specific guidance see CONSORT for harms)	12
Discussion			
Limitations	20	Trial limitations, addressing sources of potential bias, imprecision, and, if relevant, multiplicity of analyses	13
Generalisability	21	Generalisability (external validity, applicability) of the trial findings	13-14
Interpretation	22	Interpretation consistent with results, balancing benefits and harms, and considering other relevant evidence	13-14
Other information			
Registration	23	Registration number and name of trial registry	15
Protocol	24	Where the full trial protocol can be accessed, if available	n/a
Funding	25	Sources of funding and other support (such as supply of drugs), role of funders	15

*We strongly recommend reading this statement in conjunction with the CONSORT 2010 Explanation and Elaboration for important clarifications on all the items. If relevant, we also recommend reading CONSORT extensions for cluster randomised trials, non-inferiority and equivalence trials, non-pharmacological treatments, herbal interventions, and pragmatic trials. Additional extensions are forthcoming: for those and for up to date references relevant to this checklist, see www.consort-statement.org.



**Extensively hydrolyzed casein formula supplemented with
Lactobacillus rhamnosus GG maintains hypoallergenic
 status: Randomized double-blind, placebo-controlled
 crossover trial**

Journal:	<i>BMJ Open</i>
Manuscript ID:	bmjopen-2011-000637.R1
Article Type:	Research
Date Submitted by the Author:	01-Feb-2012
Complete List of Authors:	Muraro, Antonella; Universita degli Studi de Padova and Regione Veneto, Food Allergy Centre Hoekstra, Maarten; University Medical Centre St. Radboud, Department of Paediatrics Meijer, Yolanda; University Medical Centre, Wilhelmina Childrens' Hospital Lifschitz, Carlos; Hospital Italiano de Buenos Aires, Departamento de Pediatria Wampler, Jennifer; Mead Johnson Nutrition, Clinical Research, Department of Medical Affairs Harris, Cheryl; Mead Johnson Nutrition, Clinical Research, Department of Medical Affairs Scalabrin, Deolinda; Mead Johnson Nutrition, Clinical Research, Department of Medical Affairs
Primary Subject Heading:	Paediatrics
Secondary Subject Heading:	Nutrition & metabolism, Immunology (including allergy)
Keywords:	Allergy < THORACIC MEDICINE, PAEDIATRICS, NUTRITION & DIETETICS

SCHOLARONE™
 Manuscripts

1
2
3 **Extensively hydrolyzed casein formula supplemented with *Lactobacillus rhamnosus* GG**
4 **maintains hypoallergenic status: Randomized double-blind, placebo-controlled crossover**
5 **trial**
6
7
8
9

10 Antonella Muraro,¹ Maarten O Hoekstra,² Yolanda Meijer,³ Carlos H Lifschitz,⁴ Jennifer L
11 Wampler,⁵ Cheryl L Harris,⁵ and Deolinda MF Scalabrin⁵
12
13
14

15
16
17 ¹Department of Pediatrics, Università degli Studi di Padova and Regione Veneto, Food Allergy
18 Centre, Padova, Italy
19

20
21
22 ²Department of Paediatrics, University Medical Centre St Radboud, Nijmegen, The Netherlands
23

24
25 ³Wilhelmina Childrens' Hospital, University Medical Centre, Utrecht, The Netherlands
26

27
28 ⁴Departamento de Pediatria, Hospital Italiano de Buenos Aires, Buenos Aires, Argentina
29

30
31 ⁵Clinical Research, Department of Medical Affairs, Mead Johnson Nutrition, Evansville, IN
32
33

34 **Correspondence to**

35
36 Dr Jennifer L Wampler, Department of Medical Affairs, Mead Johnson Nutrition, 2400 West
37 Lloyd Expressway, Evansville, IN, 47714. E-mail: jennifer.wampler@mjn.com.
38
39
40
41
42

43 **Keywords**

44
45
46 cow's milk protein, cow's milk allergy, extensively hydrolyzed formula, double-blind placebo-
47 controlled food challenge, hypoallergenic formula, infant, *Lactobacillus* GG
48
49
50
51
52
53
54
55
56
57
58
59
60

ABSTRACT

Objective: To evaluate the hypoallergenicity of an extensively hydrolyzed (EH) casein formula supplemented with *Lactobacillus rhamnosus* GG (LGG).

Design: A prospective, randomized, double-blind, placebo-controlled crossover trial.

Setting: Two study sites in Italy and The Netherlands.

Study participants: Children with documented cow's milk allergy (CMA) were eligible for inclusion in this trial.

Interventions: After a 7-day period of strict avoidance of cow's milk protein and other suspected food allergens, participants were tested with an EH casein formula with demonstrated hypoallergenicity (control, EHF) and a formula of the same composition with LGG added at 10^8 colony-forming units/g powder (EHF-LGG) in randomized order in a double-blind, placebo-controlled, food challenge (DBPCFC). After absence of adverse reactions in the DBPCFC, an open challenge was performed with EHF-LGG, followed by a 7-day home feeding period with the same formula.

Main outcome measure: Clinical assessment of any adverse reactions to ingestion of study formulas during the DBPCFC.

Results: For all participants with confirmed CMA (n = 31), the DBPCFC and open challenge were classified as negative.

Conclusion: The EH casein formula supplemented with LGG is hypoallergenic and can be recommended for infants and children allergic to cow's milk who require an alternative to formulas containing intact cow's milk protein.

Trial registration: ClinicalTrials.gov Identifier: NCT01181297

Article focus

- ▶ Hypoallergenic, extensively hydrolyzed (EH) cow's milk-based or amino acid-based formulas are recommended for management of cow's milk allergy (CMA) in formula-fed infants.
- ▶ Although *Lactobacillus rhamnosus* GG (LGG) has over 25 years of safe use as a dietary probiotic, the safety and hypoallergenic status of EH casein formula supplemented with LGG has not yet been demonstrated.

Key messages

- ▶ Supplementing the EH casein formula with LGG to provide additional benefits does not change its hypoallergenic status.
- ▶ The LGG-supplemented EH formula can be safely used for management of CMA in infants and children.

Strengths and limitations of this study

- ▶ Testing the LGG-supplemented EH formula in a properly designed double-blind, placebo-controlled, food challenge (DBPCFC) in accordance with accepted European Society of Pediatric Gastroenterology and Nutrition (ESPGHAN) and American Academy of Pediatrics (AAP) standards to establish hypoallergenicity is a major strength of this study.
- ▶ One limitation is the potentially low novelty of our finding. Because LGG is the most used dietary probiotic, accumulated safety data for LGG as a stand-alone dietary supplement in infants and adults is available.

INTRODUCTION

Breast milk is the gold standard for infant nutrition and is recommended for most infants.^{1,2} A cow's milk-based infant formula is most commonly used if a breast milk substitute is needed during the first year of life.¹ However, allergy to cow's milk protein affects 2.2 to 2.8% of all infants.^{3,4} Diagnostic confirmation of cow's milk allergy (CMA) is based on clinical history, physical exam, and controlled elimination of cow's milk protein followed by challenge procedures, including double-blind placebo-controlled food challenge (DBPCFC).⁵ Quantification of specific IgE to cow's milk is used to diagnose IgE-mediated CMA and may eliminate the need to perform a DBPCFC for confirmation.^{5,6} A child may be considered allergic to cow's milk with no need for DBPCFC confirmation if the specific IgE concentration by CAP RAST is \geq the 95% positive predictive value as established in earlier studies (5 kU_A/L and 15 kU_A/L, for children \leq 1 year of age and $>$ 1 year of age, respectively).^{6,7} Management of CMA is based on complete avoidance of intact cow's milk protein. One alternative, soy-based formula, is generally not recommended, particularly for infants younger than 6 months of age with non-IgE mediated manifestations of CMA, who are more likely to develop concomitant soy allergy.^{8,9} Thus, formulas with reduced allergenicity, such as those with extensively hydrolyzed (EH) protein, are recommended for formula-fed infants with CMA.^{2,8,10} EH casein formula has a long history of demonstrated efficacy and safety to manage infants and children with CMA.¹¹⁻¹³

Determination of β -lactoglobulin (β LG) level, a major cow's milk allergen, is a first assessment of the suitability of a substitute infant formula for infants and children with CMA.¹⁴ The minute amount of β LG detected in EH casein formula¹⁴ is in the lower range of the amounts detected in breast milk (0.9 to 150 μ g/L).¹⁵ According to the European Society of Pediatric Gastroenterology and Nutrition (ESPGHAN) and the American Academy of Pediatrics (AAP), a

1
2
3 formula must be tested in a properly designed DBPCFC and can be considered hypoallergenic
4
5 when demonstrated with 95% confidence that at least 90% of infants and children with
6
7 confirmed CMA would have no reaction to the formula under double-blind, placebo-controlled
8
9 conditions.^{10 14 16} To control for possible false-negatives, a negative DBPCFC should be
10
11 followed by an open challenge (OC) with the tested formula.⁵ After negative challenges, further
12
13 assessment of tolerance to the tested formula during a 7-day feeding period to detect potential
14
15 late-onset reactions is also recommended.^{10 14}
16
17
18
19

20 Probiotics are live microorganisms which, when administered in adequate amounts, confer a
21
22 health benefit to the host.¹⁷ *Lactobacillus rhamnosus* GG (LGG) is the most studied probiotic,
23
24 with demonstrated benefits when added to an EH formula, including decreased severity of atopic
25
26 dermatitis (AD),^{18 19} reduced intestinal inflammation^{18 20} and faster induction of tolerance²¹ in
27
28 infants with CMA, and improved recovery from allergic colitis.²⁰ We previously demonstrated
29
30 LGG was well tolerated, promoted normal growth, and transiently colonized the intestine when
31
32 added to an EH casein formula fed to healthy term infants.^{22 23} An EH formula with the same
33
34 casein hydrolysate and many years of clinical experience of safety use in children with CMA
35
36 was demonstrated to be hypoallergenic in those children in a DBPCFC trial.¹³ However, the
37
38 hypoallergenic status of the EH casein formula with added LGG has not yet been demonstrated.
39
40 In the current study, we evaluated if LGG addition to this EH casein formula affected its
41
42 hypoallergenic status for use in management of confirmed CMA in infants and children.
43
44
45
46
47
48
49
50
51
52
53
54
55
56
57
58
59
60

METHODS

Study design and participants

A randomized, controlled, prospective trial was conducted at two study sites to assess the hypoallergenicity of an EH casein formula with the same formulation of a previously existing formula (Nutramigen[®], Mead Johnson & Company, Evansville, IN; control, EHF) that differed only in supplementation with LGG at 10^8 colony-forming units/g of powder (EHF-LGG). Each powdered formula provided 2.8 g protein/100 kcal. The LGG raw material used in the formula demonstrated absence of β LG, as determined by an ELISA test with a detection limit of 0.1 μ g/g (data on file).

Infants and children ≤ 14 years of age with confirmed CMA were eligible for this study if their allergic manifestations were under sufficient control so that a positive response to a food challenge would be recognizable. In addition, participants should have successfully consumed the control formula within 1 week of study enrollment. Exclusion criteria were presence of systemic disease or illness that could compromise participation in the study, use of beta-blockers within 12 hours of DBPCFC, use of short-acting, medium-acting, or long-acting antihistamines more than once within 3, 7, or 21 days of DBPCFC, respectively, or oral steroids within 21 days of DBPCFC. Adverse events were recorded throughout the study.

Confirmation of CMA

Confirmation of CMA required one of the following criteria: 1) a positive DBPCFC to cow's milk or cow's milk-based formula within 6 months of study enrollment; 2) a positive confirmatory value of CAP RAST (Pharmacia, Uppsala, Sweden) to cow's milk within 6 months of study enrollment (≥ 5 kU_A/L in participants ≤ 1 year of age or ≥ 15 kU_A/L in participants > 1 year of age); 3) a documented significant adverse reaction to inadvertent ingestion of cow's milk

1
2
3 or cow's milk-based formula within 6 months of enrollment plus a positive DBPCFC or a
4
5 confirmatory CAP RAST value to cow's milk within 12 months of enrollment; or 4) a physician-
6
7 documented anaphylaxis to cow's milk or cow's milk-based formula within 6 months of study
8
9 enrollment plus a confirmatory CAP RAST value to cow's milk within 12 months of enrollment.
10
11

12 **DBPCFC and Open Challenge (OC)**

14
15 The hypoallergenicity of the EHF-LGG formula was evaluated in a DBPCFC and OC, as
16
17 described previously.²⁴ A 7-day period of strict elimination of cow's milk protein and other
18
19 suspected food allergens preceded the DBPCFC (Figure 1). On Study Day 1 prior to the
20
21 beginning of the DBPCFC and OC, participants underwent a physical examination and medical
22
23 history and status of allergic diseases was recorded. Participants were either asymptomatic or
24
25 allergic manifestations had been stabilized for a minimum of 7 days prior to the DBPCFC. The
26
27 study sponsor had issued a list of 6-digit participant numbers to each study site and the study
28
29 coordinator sequentially assigned a participant number to each participant. The sponsor also
30
31 created a separate computer-generated randomization list of participant numbers that indicated
32
33 the order in which each study formula should be offered in the DBPCFC challenge. At both
34
35 study sites, the participant number was provided to a third-party pharmacist who referenced the
36
37 number against the randomization list in order to prepare the EHF and EHF-LGG formulas in the
38
39 assigned randomized order for each participant.
40
41
42
43
44

45
46 In the DBPCFC, the EHF and EHF-LGG formulas fed in randomized order were
47
48 administered in an initial 5-10 mL aliquot followed by gradually increasing volumes over a
49
50 maximum period of 120 minutes to provide a cumulative volume of 150 mL. A minimum
51
52 interval of approximately 120 minutes between the end of the challenge with the first formula
53
54 separated the beginning of the challenge with the second formula. Times of consumption and
55
56
57
58
59
60

1
2
3 amounts of study formula consumed during each challenge were recorded. Any signs or
4
5 symptoms present before (baseline), during, or after the DBPCFC and OC were recorded using a
6
7 scoring system to rate severity. The skin was observed for rash, urticaria/angioedema, or
8
9 pruritus, with the percentage of body area affected recorded. The upper respiratory system was
10
11 assessed for sneezing/itching, nasal congestion, rhinorrhea, or laryngeal symptoms, and the
12
13 lower respiratory system was assessed for wheezing. The gastrointestinal system was evaluated
14
15 for subjective symptoms such as nausea and abdominal pain and objective symptoms such as
16
17 vomiting and diarrhea. Any changes in signs or symptoms from baseline would have resulted in
18
19 classifying the challenge as positive and discontinuing the participant from the study. If the
20
21 DBPCFC was negative, an OC with 150 to 250 mL of the EHF-LGG followed.
22
23
24
25

26 27 **Home feeding period**

28
29 To assess long-term tolerance and reveal any false-negative results to the challenges, all
30
31 participants with negative responses to both the DBPCFC and OC consumed a minimum of 240
32
33 mL of EHF-LGG formula/day during a 7-day home feeding period. Participants' parents
34
35 recorded in a daily diary volume of formula consumed; presence and severity of vomiting,
36
37 diarrhea, rash, runny nose, wheezing, or any other symptoms (rated as mild, moderate, or
38
39 excessive); number of bowel movements; and overall formula acceptance and tolerance (rated as
40
41 satisfactory or unsatisfactory). The investigator completed a final evaluation at the end of the 7-
42
43 day home feeding period.
44
45
46
47

48 49 **Sample size determination**

50
51 In a study with a binomial outcome (reaction versus no reaction), the sample size can be
52
53 determined by calculating a binomial confidence interval (CI) for p , the probability of having a
54
55 reaction, as demonstrated previously.¹³ In the case of 0 observed reactions, the upper 95% CI for
56
57
58
59
60

1
2
3 p is less than 0.10 when the sample size is 29 participants. Thus studying at least 29 participants
4
5 and having none classified as positive in the DBPBFC allows the conclusion that the study
6
7 provided 95% confidence that at least 90% of children with confirmed CMA who ingest the
8
9 tested formula would have no reaction.^{10 16} Data was prepared using SAS[®] version 8 (Cary, NC).
10
11

12 **Ethics approval**

13
14 The research protocol and informed consent were approved by the Medical Ethics Committees of
15
16 the Department of Pediatrics, Università degli Studi di Padova and Regione Veneto, Food
17
18 Allergy Centre, Padova, Italy, and the Wilhelmina Children's Hospital, University Medical
19
20 Centre, Utrecht, The Netherlands. The study complied with good clinical practice guidelines and
21
22 the 1996 version of the Declaration of Helsinki.
23
24
25
26
27
28
29
30
31
32
33
34
35
36
37
38
39
40
41
42
43
44
45
46
47
48
49
50
51
52
53
54
55
56
57
58
59
60

RESULTS

Of the 34 children enrolled in the study between April 2003 and February 2004, a total of 33 (males, 19; females, 14) completed the DBPCFC, OC, and 7-day home feeding period (one participant who was enrolled but did not meet inclusion criteria was discontinued from the study) (Figure 1). Two participants were excluded from further analyses because CAP RAST to cow's milk was lower than the confirmatory value for CMA. Neither participant experienced allergic reactions to the study formulas. Of the remaining 31 participants, 13 were <1 year, 17 were 1 to 3 years, and 1 was 11 years of age. The primary criterion used to confirm ongoing CMA, values for CAP RAST to cow's milk, and symptoms evoked after the most recent inadvertent cow's milk protein intake or DBPCFC are summarized in table 1 for these participants.

Ongoing allergic diseases including AD, asthma, and/or allergic rhinitis were noted in 29 participants at study entry. Two participants reported a history of AD but no active allergic manifestation at study entry. Participants' status of allergic manifestations and presence of food allergies other than CMA at enrollment are shown in figures 2a and 2b, respectively. Ongoing allergy to multiple foods was reported for 29 participants, with 18 participants having 2 or more reported food allergies in addition to CMA.

After the pre-challenge 7-day period of cow's milk protein elimination, 29 of 31 participants had no allergic symptoms and remained asymptomatic throughout the DBPCFC and OC. Of the two remaining participants, one had no change in the mild rhinorrhea reported at baseline, and one had an improvement in the pruritus and rash reported at baseline. The DBPCFC and OC were thus classified as negative for all participants. Parent-recorded diaries during the home feeding period were returned for 30 participants and indicated that overall acceptance and tolerance of the EHF-LGG formula was generally good. Mean daily intake (mL/day \pm SD)

1
2
3 reported was 546 ± 251 and 522 ± 132 for participants <1 year and 1 to 3 years of age, respectively,
4
5 and 561 for the 11-year-old participant. Mean daily stool frequencies (\pm SD) were 1.9 ± 0.5 and
6
7 1.7 ± 0.9 for participants <1 year and 1 to 3 years of age, respectively, and 1.3 for the 11-year-old.
8
9
10 No serious adverse events were reported during the DBPCFC, OC, or home feeding period.
11
12
13
14
15
16
17
18
19
20
21
22
23
24
25
26
27
28
29
30
31
32
33
34
35
36
37
38
39
40
41
42
43
44
45
46
47
48
49
50
51
52
53
54
55
56
57
58
59
60

DISCUSSION

These findings demonstrate that a hypoallergenic EH casein hydrolysate formula remains hypoallergenic following the addition of LGG, satisfying both ESPHGAN and AAP guidelines. In this study all 31 study participants with confirmed CMA had a previous history of experiencing one or more types of allergic symptoms in the skin, respiratory and/or gastrointestinal systems, or had systemic anaphylaxis after ingestion of cow's milk protein, meeting recognized criterion to confirm CMA using a combination of convincing symptoms upon exposure to cow's milk protein and a strongly positive confirmatory value of specific IgE to cow's milk by RAST.^{6 7 24} In accordance with reports of sensitization to other food allergens commonly observed in children with CMA,^{13 24} allergy to one or more foods in addition to cow's milk was reported in 94% of participants in this study. After 7 days of strict cow's milk protein elimination from the diet, 29 of 31 participants had no allergic symptoms and remained asymptomatic throughout the DBPCFC and OC, whereas the other two had mild symptoms that either did not change or improved during the challenges. No serious adverse events were reported during the DBPCFC, OC, or the 7-day home feeding period.

The addition of probiotics in formula used for management of CMA requires that they be proven safe and are well tolerated. LGG has over 25 years of safe use²⁵ including administration to preterm infants²⁶ or to infants perinatally who were at high risk of allergy, in whom normal growth was demonstrated up to 2 to 4 years of age.^{27 28} To justify use, addition of a probiotic must also be shown to be of benefit. Early gut microbial colonization is associated with modulation of inflammation and expression of allergy.^{18 20 29 30} LGG administration to atopic pregnant women followed by postnatal administration to their infants was associated with lower incidence of AD at 2, 4, and 7 years of age compared to placebo.³⁰ Additionally, anti-

1
2
3 inflammatory effects of LGG accompanied by amelioration of symptoms were observed in
4
5 infants experiencing AD as a manifestation of CMA.^{19,31} In a study using fecal calprotectin as a
6
7 marker of intestinal inflammation, infants with presumptive allergic colitis were randomized to
8
9 receive an EH formula with or without LGG and the same casein hydrolysate as the formulas in
10
11 the current study.²⁰ After a 4-week feeding period, blood in stools characteristic of allergic
12
13 colitis disappeared in all infants in the LGG-supplemented group versus only 63% in the non-
14
15 supplemented group. The LGG-supplemented group also experienced a larger decrease in fecal
16
17 calprotectin level. In a recent study, EH casein formula with LGG was demonstrated to
18
19 accelerate the time of acquisition of tolerance to cow's milk protein in infants with CMA after 6
20
21 and 12 months of feeding.²¹

22
23
24
25
26
27 We previously demonstrated that LGG added to an EH casein formula was well tolerated and
28
29 transiently colonized the intestinal tract of healthy, term infants.²² Growth and other nutrition
30
31 parameters, including circulating fatty acid levels, were demonstrated to be normal in healthy
32
33 term infants who received this formula up to 4 months of age.²³ Available data suggests that the
34
35 LGG-supplemented EH casein formula assessed in the current study provides additional benefits
36
37 of better management of allergic colitis, as well as faster tolerance acquisition, in infants with
38
39 CMA that are not observed with the non-supplemented formula. We tested the EH casein
40
41 formula supplemented with LGG according to established criteria and demonstrated its
42
43 hypoallergenic status is maintained. Therefore, this formula can be recommended for infants and
44
45 children with CMA who require an alternative to formulas containing intact cow's milk protein.
46
47
48
49
50
51
52
53
54
55
56
57
58
59
60

Acknowledgements

The authors wish to thank study site staff for their cooperation. The participation of parents and infants in this study is greatly acknowledged.

Funding

The study was funded by the study sponsor, Mead Johnson Nutrition (study number 3369-2).

Mead Johnson Nutrition provided logistical support during the trial. Employees of the sponsor worked with study investigators to prepare the protocol, summarize the collected data, and write the manuscript.

Competing interests

AM, MOH, and YM have received research support from Mead Johnson Nutrition. CHL is a former employee of Mead Johnson Nutrition. JLW, CLH, and DMFS work in the Department of Medical Affairs at Mead Johnson Nutrition.

Data sharing statement

No additional data available.

Contributorship

AM, YM, and MOH helped design the study, assessed study participants and collected study data, interpreted data, and reviewed and revised the manuscript. CHL interpreted data and reviewed and revised the manuscript. JLW and DMFS interpreted data and drafted the manuscript. CLH prepared and interpreted data, and reviewed the manuscript. All authors contributed to the intellectual content and approved the final version.

The Corresponding Author has the right to grant on behalf of all authors and does grant on behalf of all authors, an exclusive licence (or non-exclusive for government employees) on a

1
2
3 worldwide basis to the BMJ Group and co-owners or contracting owning societies (where
4
5 published by the BMJ Group on their behalf), and its Licensees to permit this article (if accepted)
6
7
8 to be published in BMJ open and any other BMJ Group products and to exploit all subsidiary
9
10 rights, as set out in our licence.
11
12
13
14
15
16
17
18
19
20
21
22
23
24
25
26
27
28
29
30
31
32
33
34
35
36
37
38
39
40
41
42
43
44
45
46
47
48
49
50
51
52
53
54
55
56
57
58
59
60

For peer review only

Table 1 Participants with confirmed CMA: primary criterion used to confirm CMA, age at CAP RAST to cow's milk (CM) and CAP RAST values, and symptoms evoked by the participants' most recent exposure to cow's milk protein (CMP)

Primary criterion to confirm CMA	Age (years)	CAP RAST to CM (kU _A /L)	Symptoms evoked after most recent inadvertent CMP intake or DBPCFC to CMP
Positive DBPCFC to CMP within 6 mo of study enrollment	0.7	70	pruritus, rash, urticaria/angioedema, rhinorrhea
	0.9	12.2	pruritus, rash, urticaria/angioedema
	1.1	<0.35	pruritus, rash
	1.3	>100	pruritus, rash, urticaria/angioedema
	1.4	9.9	pruritus, rash, urticaria/angioedema
	1.6	15.7	urticaria/angioedema, sneezing/itching, laryngeal edema
	11.6	12.3	laryngeal edema
Confirmatory CAP RAST to CM within 6 mo of study enrollment	0.6	7.16	pruritus, rash, urticaria/angioedema, wheezing
	0.8	17.1	pruritus, rash, urticaria/angioedema
	1.5	22.4	pruritus, rash, urticaria/angioedema, sneezing/itching
	1.6	34.5	pruritus, rash, vomiting
	2.3	>100	*
	2.4	61.8	pruritus, rash, urticaria/angioedema, vomiting
Adverse reaction to inadvertent CMP intake within 6 mo and positive CAP RAST to CM within 12 mo of study enrollment	0.3	68.3	pruritus, rash, urticaria/angioedema, nasal congestion, sneezing/itching
	0.4	6.09	pruritus, rash, urticaria/angioedema, vomiting
	0.5	4.59 [†]	pruritus, rash, urticaria/angioedema, nasal congestion, sneezing/itching
	0.6	10.5	pruritus, rash, urticaria/angioedema, vomiting
	0.6	9.01	pruritus, urticaria/angioedema, nasal congestion, sneezing/itching
	0.6	57.3	pruritus, rash, urticaria/angioedema, nasal congestion, sneezing/itching, laryngeal edema
	0.7	7.46	pruritus, rash, urticaria/angioedema, nasal congestion, rhinorrhea, sneezing/itching
	0.7	9.05	pruritus, rash, urticaria/angioedema, rhinorrhea, sneezing/itching
	0.8	6.84	pruritus, rash, wheezing, vomiting
	1.0	29.1	pruritus, rash, urticaria/angioedema
	1.0	29.5	pruritus, rash, urticaria/angioedema
	1.1	60.8	pruritus, rash, urticaria/angioedema, vomiting
	1.3	>100	urticaria/angioedema, rhinorrhea, wheezing, diarrhea, vomiting
1.4	23.9	pruritus, rash, urticaria/angioedema, vomiting	
1.5	25.0	pruritus, rash, urticaria/angioedema, vomiting	
1.6	30.5	pruritus, rash, urticaria/angioedema, rhinorrhea, sneezing/itching	
Anaphylaxis to CMP within 6 mo and positive CAP RAST to CM within 12 mo of study enrollment	0.3	8.01	pruritus, rash, urticaria/angioedema, systemic anaphylaxis
	0.4	5	pruritus, rash, urticaria/angioedema, nasal congestion, rhinorrhea, sneezing/itching, systemic anaphylaxis

*Participant had a history suggestive of CMA beginning at 6 mo of age and ongoing symptoms of AD at enrollment

[†]Participant had sufficient evidence of CMA (exhibited multiple symptoms upon inadvertent CM intake within 3 mo of enrollment) although CAP RAST to CM was slightly < 5 kU_A/L

FIGURES

Figure 1 Flow of participants through the double-blind placebo-controlled food challenge (DBPCFC), open challenge (OC), and home feeding period (EHF: control formula; EHF-LGG: tested formula; CMP: cow's milk protein; CMA: cow's milk allergy)

Figure 2 Medical history of participants with confirmed CMA (n=31): 2a) Ongoing and resolved clinical allergic manifestations at enrollment; 2b) Number of participants who reported allergy to foods other than cow's milk at enrollment.

REFERENCES

1. Gartner LM, Morton J, Lawrence RA, *et al.* Breastfeeding and the use of human milk. *Pediatrics*. 2005;**115**:496-506.
2. Boyce JA, Assa'ad A, Burks AW, *et al.* Guidelines for the diagnosis and management of food allergy in the United States: report of the NIAID-sponsored expert panel. *J Allergy Clin Immunol*. 2010;**126**:S1-58.
3. Höst A, Halken S, Jacobsen HP, *et al.* Clinical course of cow's milk protein allergy/intolerance and atopic diseases in childhood. *Pediatr Allergy Immunol*. 2002;**13** Suppl 15:23-8.
4. Schrandt JJ, van den Bogart JP, Forget PP, *et al.* Cow's milk protein intolerance in infants under 1 year of age: a prospective epidemiological study. *Eur J Pediatr*. 1993;**152**:640-4.
5. Bindslev-Jensen C, Ballmer-Weber BK, Bengtsson U, *et al.* Standardization of food challenges in patients with immediate reactions to foods--position paper from the European Academy of Allergology and Clinical Immunology. *Allergy*. 2004;**59**:690-7.
6. Garcia-Ara C, Boyano-Martinez T, Diaz-Pena JM, *et al.* Specific IgE levels in the diagnosis of immediate hypersensitivity to cows' milk protein in the infant. *J Allergy Clin Immunol*. 2001;**107**:185-90.
7. Sampson HA. Utility of food-specific IgE concentrations in predicting symptomatic food allergy. *J Allergy Clin Immunol*. 2001;**107**:891-6.
8. Vandenas Y, Koletzko S, Isolauri E, *et al.* Guidelines for the diagnosis and management of cow's milk protein allergy in infants. *Arch Dis Child*. 2007;**92**:902-8.
9. Bhatia J, Greer F. Use of soy protein-based formulas in infant feeding. *Pediatrics*. 2008;**121**:1062-8.

10. American Academy of Pediatrics. Committee on Nutrition. Hypoallergenic infant formulas. *Pediatrics*. 2000;**106**:346-9.
11. Oldæus G, Björkstén B, Einarsson R, *et al*. Antigenicity and allergenicity of cow milk hydrolysates intended for infant feeding. *Pediatr Allergy Immunol*. 1991;**2**:156-64.
12. Oldæus G, Bradley CK, Björkstén B, *et al*. Allergenicity screening of "hypoallergenic" milk-based formulas. *J Allergy Clin Immunol*. 1992;**90**:133-5.
13. Sampson HA, Bernhisel-Broadbent J, Yang E, *et al*. Safety of casein hydrolysate formula in children with cow milk allergy. *J Pediatr*. 1991;**118**:520-5.
14. Isolauri E, Sutas Y, Makinen-Kiljunen S, *et al*. Efficacy and safety of hydrolyzed cow milk and amino acid-derived formulas in infants with cow milk allergy. *J Pediatr*. 1995;**127**:550-7.
15. Host A, Husby S, Hansen LG, *et al*. Bovine beta-lactoglobulin in human milk from atopic and non-atopic mothers. Relationship to maternal intake of homogenized and unhomogenized milk. *Clin Exp Allergy*. 1990;**20**:383-7.
16. Host A, Koletzko B, Dreborg S, *et al*. Dietary products used in infants for treatment and prevention of food allergy. Joint Statement of the European Society for Paediatric Allergology and Clinical Immunology (ESPACI) Committee on Hypoallergenic Formulas and the European Society for Paediatric Gastroenterology, Hepatology and Nutrition (ESPGHAN) Committee on Nutrition. *Arch Dis Child*. 1999;**81**:80-4.
17. Guarner F, Schaafsma GJ. Probiotics. *Int J Food Microbiol*. 1998;**39**:237-8.
18. Isolauri E, Arvola T, Sutas Y, *et al*. Probiotics in the management of atopic eczema. *Clin Exp Allergy*. 2000;**30**:1604-10.
19. Viljanen M, Savilahti E, Haahtela T, *et al*. Probiotics in the treatment of atopic eczema/dermatitis syndrome in infants: a double-blind placebo-controlled trial. *Allergy*. 2005;**60**:494-500.

- 1
2
3 20. Baldassarre ME, Laforgia N, Fanelli M, *et al.* *Lactobacillus* GG improves recovery in
4 infants with blood in the stools and presumptive allergic colitis compared with extensively
5 hydrolyzed formula alone. *J Pediatr.* 2010;**156**:397-401.
6
7
8
9
10 21. Canani RB, Nocerino R, Terrin G, *et al.* Effect of extensively hydrolyzed casein
11 formula supplemented with *Lactobacillus* GG on tolerance acquisition in infants with cow's
12 milk allergy: a randomized trial. *J Allergy Clin Immunol.* in press.
13
14
15
16 22. Petschow BW, Figueroa R, Harris CL, *et al.* Effects of feeding an infant formula
17 containing *Lactobacillus* GG on the colonization of the intestine: a dose-response study in
18 healthy infants. *J Clin Gastroenterol.* 2005;**39**:786-90.
19
20
21
22
23 23. Scalabrin DM, Johnston WH, Hoffman DR, *et al.* Growth and tolerance of healthy
24 term infants receiving hydrolyzed infant formulas supplemented with *Lactobacillus*
25 *rhamnosus* GG: randomized, double-blind, controlled trial. *Clin Pediatr (Phila).*
26
27
28
29
30 2009;**48**:734-44.
31
32 24. Burks W, Jones SM, Berseth CL, *et al.* Hypoallergenicity and effects on growth and
33 tolerance of a new amino acid-based formula with docosahexaenoic acid and arachidonic
34 acid. *J Pediatr.* 2008;**153**:266-71.
35
36
37
38
39 25. Gorbach SL. The discovery of *Lactobacillus* GG. (*Lactobacillus* GG). *Nutr Today.*
40
41 1996;**31**:2S-3S.
42
43 26. Stansbridge EM, Walker V, Hall MA, *et al.* Effects of feeding premature infants with
44 *Lactobacillus* GG on gut fermentation. *Arch Dis Child.* 1993;**69**:488-92.
45
46
47 27. Laitinen K, Kalliomaki M, Poussa T, *et al.* Evaluation of diet and growth in children
48 with and without atopic eczema: follow-up study from birth to 4 years. *Br J Nutr.*
49
50 2005;**94**:565-74.
51
52
53
54
55
56
57
58
59
60

- 1
2
3 28. Rinne M, Kalliomaki M, Salminen S, *et al.* Probiotic intervention in the first months
4 of life: short-term effects on gastrointestinal symptoms and long-term effects on gut
5 microbiota. *J Pediatr Gastroenterol Nutr.* 2006;**43**:200-5.
6
7
8
9
10 29. Pessi T, Sutas Y, Hurme M, *et al.* Interleukin-10 generation in atopic children
11 following oral *Lactobacillus rhamnosus* GG. *Clin Exp Allergy.* 2000;**30**:1804-8.
12
13
14 30. Kalliomäki M, Salminen S, Poussa T, *et al.* Probiotics during the first 7 years of life:
15 A cumulative risk reduction of eczema in a randomized, placebo-controlled trial. *J Allergy*
16 *Clin Immunol.* 2007;**119**:1019-21.
17
18
19
20
21 31. Majamaa H, Isolauri E. Probiotics: a novel approach in the management of food
22 allergy. *J Allergy Clin Immunol.* 1997;**99**:179-85.
23
24
25
26
27
28
29
30
31
32
33
34
35
36
37
38
39
40
41
42
43
44
45
46
47
48
49
50
51
52
53
54
55
56
57
58
59
60

1
2
3
4
5
6
7
8
9
10
11
12
13
14
15
16
17
18
19
20
21
22
23
24
25
26
27
28
29
30
31
32
33
34
35
36
37
38
39
40
41
42
43
44
45
46
47
48
49
50
51
52
53
54
55
56
57
58
59
60

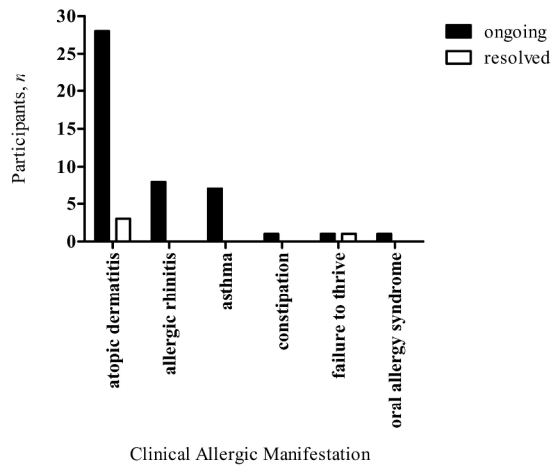


Figure 2a

Medical history of participants with confirmed CMA (n=31): 2a) Ongoing and resolved clinical allergic manifestations at enrollment.
270x352mm (300 x 300 DPI)

1
2
3
4
5
6
7
8
9
10
11
12
13
14
15
16
17
18
19
20
21
22
23
24
25
26
27
28
29
30
31
32
33
34
35
36
37
38
39
40
41
42
43
44
45
46
47
48
49
50
51
52
53
54
55
56
57
58
59
60

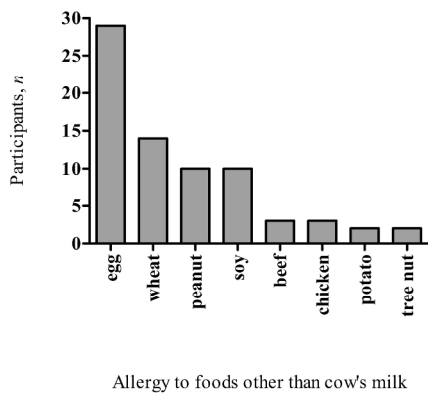
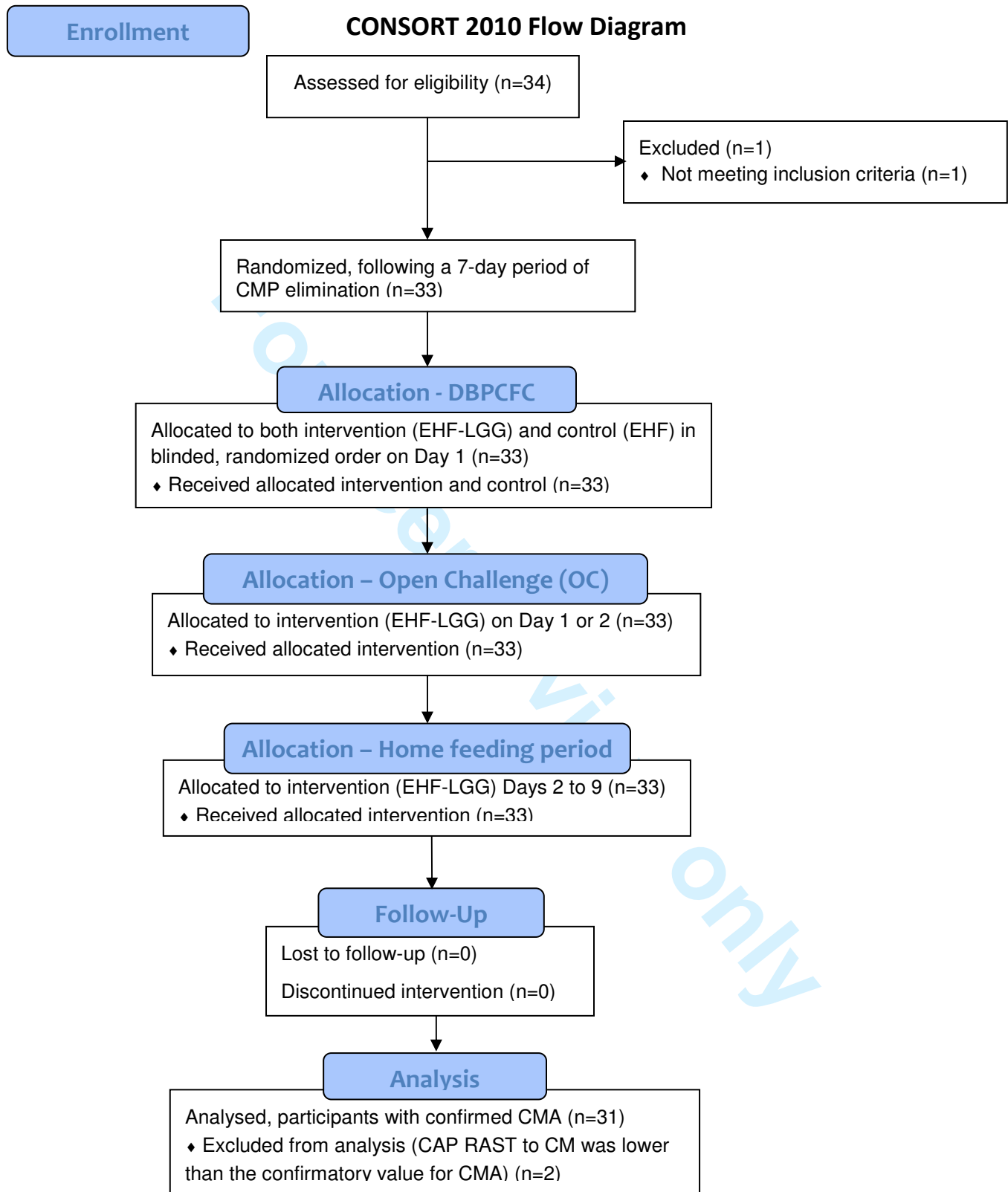


Figure 2b

2b) Number of participants who reported allergy to foods other than cow's milk at enrollment.
270x352mm (300 x 300 DPI)





CONSORT 2010 checklist of information to include when reporting a randomised trial*

Section/Topic	Item No	Checklist item	Reported on page No
Title and abstract			
	1a	Identification as a randomised trial in the title	1
	1b	Structured summary of trial design, methods, results, and conclusions (for specific guidance see CONSORT for abstracts)	2
Introduction			
Background and objectives	2a	Scientific background and explanation of rationale	4-5
	2b	Specific objectives or hypotheses	4
Methods			
Trial design	3a	Description of trial design (such as parallel, factorial) including allocation ratio	6-7
	3b	Important changes to methods after trial commencement (such as eligibility criteria), with reasons	n/a
Participants	4a	Eligibility criteria for participants	6
	4b	Settings and locations where the data were collected	10
Interventions	5	The interventions for each group with sufficient details to allow replication, including how and when they were actually administered	6-8
Outcomes	6a	Completely defined pre-specified primary and secondary outcome measures, including how and when they were assessed	8
	6b	Any changes to trial outcomes after the trial commenced, with reasons	n/a
Sample size	7a	How sample size was determined	8-9
	7b	When applicable, explanation of any interim analyses and stopping guidelines	n/a
Randomisation:			
Sequence generation	8a	Method used to generate the random allocation sequence	7
	8b	Type of randomisation; details of any restriction (such as blocking and block size)	7
Allocation concealment mechanism	9	Mechanism used to implement the random allocation sequence (such as sequentially numbered containers), describing any steps taken to conceal the sequence until interventions were assigned	7
Implementation	10	Who generated the random allocation sequence, who enrolled participants, and who assigned participants to interventions	7
Blinding	11a	If done, who was blinded after assignment to interventions (for example, participants, care providers, those	7

		assessing outcomes) and how	
	11b	If relevant, description of the similarity of interventions	6
Statistical methods	12a	Statistical methods used to compare groups for primary and secondary outcomes	8-9
	12b	Methods for additional analyses, such as subgroup analyses and adjusted analyses	n/a
Results			
Participant flow (a diagram is strongly recommended)	13a	For each group, the numbers of participants who were randomly assigned, received intended treatment, and were analysed for the primary outcome	11
	13b	For each group, losses and exclusions after randomisation, together with reasons	11
Recruitment	14a	Dates defining the periods of recruitment and follow-up	11
	14b	Why the trial ended or was stopped	n/a
Baseline data	15	A table showing baseline demographic and clinical characteristics for each group	16
Numbers analysed	16	For each group, number of participants (denominator) included in each analysis and whether the analysis was by original assigned groups	n/a
Outcomes and estimation	17a	For each primary and secondary outcome, results for each group, and the estimated effect size and its precision (such as 95% confidence interval)	11
	17b	For binary outcomes, presentation of both absolute and relative effect sizes is recommended	n/a
Ancillary analyses	18	Results of any other analyses performed, including subgroup analyses and adjusted analyses, distinguishing pre-specified from exploratory	n/a
Harms	19	All important harms or unintended effects in each group (for specific guidance see CONSORT for harms)	12
Discussion			
Limitations	20	Trial limitations, addressing sources of potential bias, imprecision, and, if relevant, multiplicity of analyses	13
Generalisability	21	Generalisability (external validity, applicability) of the trial findings	13-14
Interpretation	22	Interpretation consistent with results, balancing benefits and harms, and considering other relevant evidence	13-14
Other information			
Registration	23	Registration number and name of trial registry	15
Protocol	24	Where the full trial protocol can be accessed, if available	n/a
Funding	25	Sources of funding and other support (such as supply of drugs), role of funders	15

*We strongly recommend reading this statement in conjunction with the CONSORT 2010 Explanation and Elaboration for important clarifications on all the items. If relevant, we also recommend reading CONSORT extensions for cluster randomised trials, non-inferiority and equivalence trials, non-pharmacological treatments, herbal interventions, and pragmatic trials. Additional extensions are forthcoming: for those and for up to date references relevant to this checklist, see www.consort-statement.org.