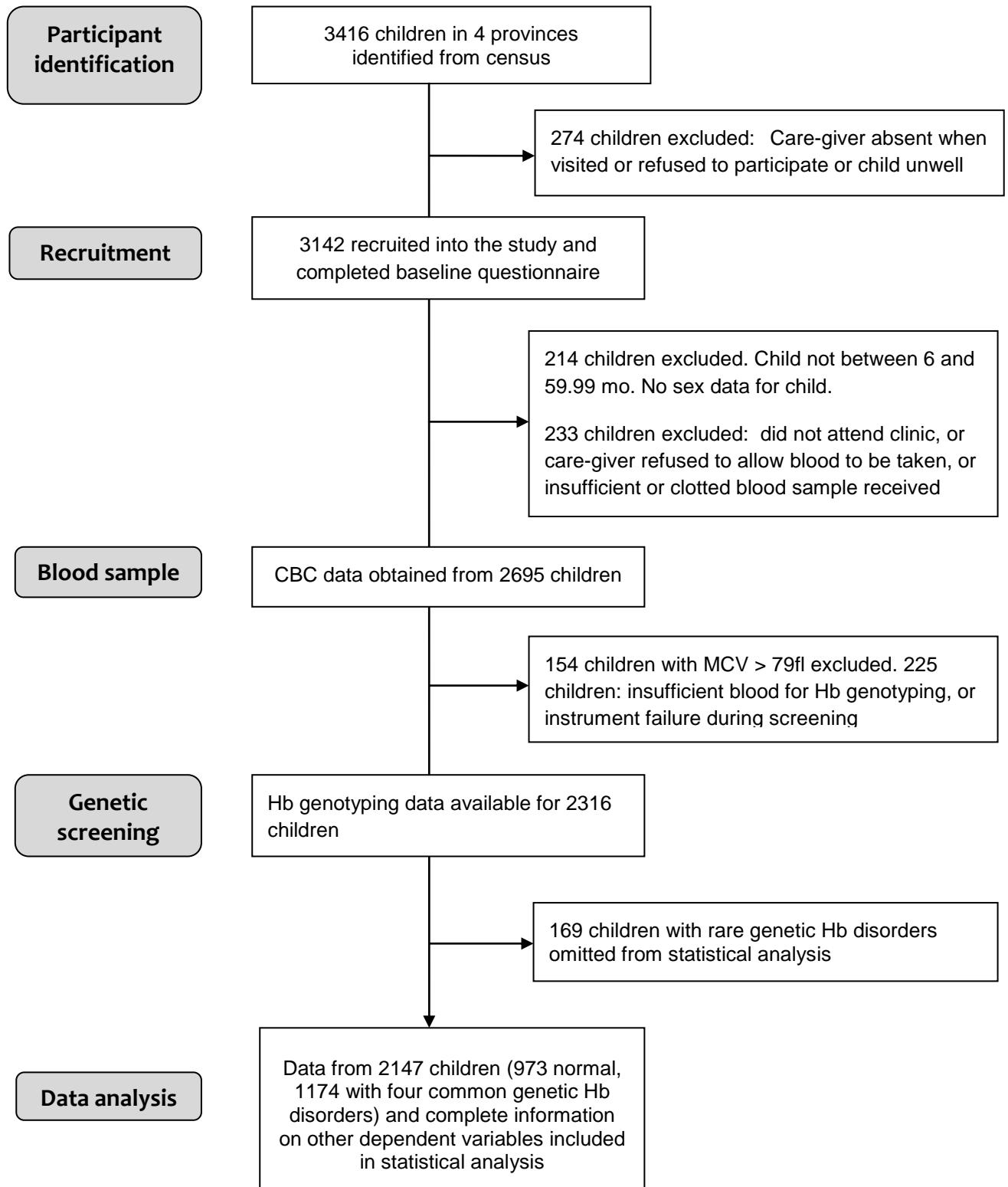


Supplemental FIGURE 1 – Chart showing recruitment, genetic screening, and analyses of data for participants



Supplemental TABLE 1 Values for hematology, biomarkers of iron status, and retinol binding protein for children with normal Hb type (Hb AA) from three age-groups by rural and urban setting, and by sex¹

		Rural		Urban					
		Mo	Boys	Girls	Boys	Girls			
Hb g/L	6-11.99	46	96 ± 13	49	102 ± 12	24	106 ± 13	17	104 ± 9
	12-23.99	99	103 ± 12	90	104 ± 10	54	112 ± 11	63	112 ± 10
	24-59.99	193	112 ± 8	154	113 ± 9	95	117 ± 8	89	116 ± 8
* Age 6-11.99 mo : <i>P</i> <0.001; Age12-23.99 mo <i>P</i> <0.001; Setting : <i>P</i> <0.001; Sex <i>P</i> =0.027									
MCV fL	6-11.99	46	67.3 ± 5.8	49	70.0 ± 5.5	24	68.0 ± 5.9	17	70.6 ± 4.9
	12-23.99	99	68.7 ± 5.9	90	70.6 ± 5.3	54	71.1 ± 4.5	63	72.4 ± 3.6
	24-59.99	193	74.1 ± 3.8	154	74.7 ± 4.1	95	75.0 ± 3.3	89	75.8 ± 2.7
* Age 6-11.99 mo : <i>P</i> <0.001; Age12-23.99 mo <i>P</i> =0.009; Setting : <i>P</i> <0.001; Sex <i>P</i> <0.001									
RBC 10 ¹² /L	6-11.99	46	4.61 ± 0.43	49	4.61 ± 0.43	24	4.63 ± 0.42	17	4.42 ± 0.29
	12-23.99	99	4.83 ± 0.38	90	4.70 ± 0.40	54	4.66 ± 0.39	63	4.55 ± 0.38
	24-59.99	193	4.60 ± 0.37	154	4.58 ± 0.36	95	4.48 ± 0.34	89	4.54 ± 0.33
* Age 6-11.99 mo : <i>P</i> =0.003; Age12-23.99 mo <i>P</i> =0.06; Setting : <i>P</i> <0.001; Sex <i>P</i> =0.05									
RDW %	6-11.99	46	14.9 ± 2.6	49	13.9 ± 2.3	21	15.9 ± 1.8	15	15.1 ± 1.2
	12-23.99	99	15.0 ± 2.4	90	14.4 ± 2.2	48	15.3 ± 2.0	53	14.6 ± 1.5
	24-59.99	193	13.3 ± 1.2	154	13.2 ± 1.2	90	13.7 ± 1.2	77	13.3 ± 0.9
* Age 6-11.99 mo : <i>P</i> =0.79; Age12-23.99 mo <i>P</i> <0.001; Setting : <i>P</i> =0.004; Sex <i>P</i> <0.001									
Ferritin µg/L	6-11.99	36	14.1 (4.6, 43.2) ²	40	18.3 (7.0, 42.7)	23	17.5 (6.6, 46.4)	14	20.1 (7.4, 54.6)
	12-23.99	78	11.8 (5.2, 26.9)	70	13.6 (6.0, 30.8)	48	16.1 (6.7, 38.4)	56	21.0 (9.4, 46.9)
	24-59.99	167	26.6 (13.1, 54.0)	136	27.8 (13.0, 59.7)	89	36.6 (18.5, 72.1)	80	48.7 (24.0, 111.6)
* Age 6-11.99 mo : <i>P</i> =0.118; Age12-23.99 mo <i>P</i> <0.001; Setting : <i>P</i> <0.001; Sex <i>P</i> =0.001									
sTfr mg/L	6-11.99	46	11.0 (7.7, 15.6)	49	9.0 (6.9, 11.8)	24	9.6 (6.8, 13.5)	17	8.2 (7.0, 9.7)
	12-23.99	99	10.2 (7.2, 14.4)	90	9.6 (7.0, 13.3)	54	8.1 (6.6, 9.8)	63	7.6 (6.2, 9.5)
	24-59.99	193	7.6 (6.1, 9.5)	154	7.2 (5.4, 9.6)	95	6.7 (5.2, 8.6)	89	6.3 (5.2, 7.5)
* Age 6-11.99 mo : <i>P</i> =0.119; Age12-23.99 mo <i>P</i> <0.001; Setting : <i>P</i> <0.001; Sex <i>P</i> <0.001									
RBP (µmol/L)	6-11.99	36	1.12 (0.87, 1.45) ²	40	1.06 (0.80, 1.41)	23	1.28 (0.94, 1.76)	14	1.20 (0.89, 1.60)
	12-23.99	78	1.08 (0.82, 1.42)	70	1.12 (0.88, 1.42)	48	1.27 (0.96, 1.67)	56	1.30 (1.01, 1.67)
	24-59.99	167	1.13 (0.86, 1.47)	136	1.08 (0.84, 1.40)	89	1.27 (1.01, 1.64)	80	1.25 (0.97, 1.67)
* Age 6-11.99 mo : <i>P</i> =0.65; Age12-23.99 mo <i>P</i> =0.47; Setting : <i>P</i> <0.001; Sex <i>P</i> =0.36									

¹Values are arithmetic mean ± SD or geometric mean (-SD, + SD)

* Significance of differences from regression with age 24-59.99 mo used as the reference age group

² Corrected for subclinical inflammation

Hb, hemoglobin; MCV, mean cell volume; RDW, red cell distribution width; MCH, mean cell

hemoglobin; RBC, red blood cell count; sTfr, soluble transferrin receptor; RBP, retinol binding protein