

Supplemental Figure S1

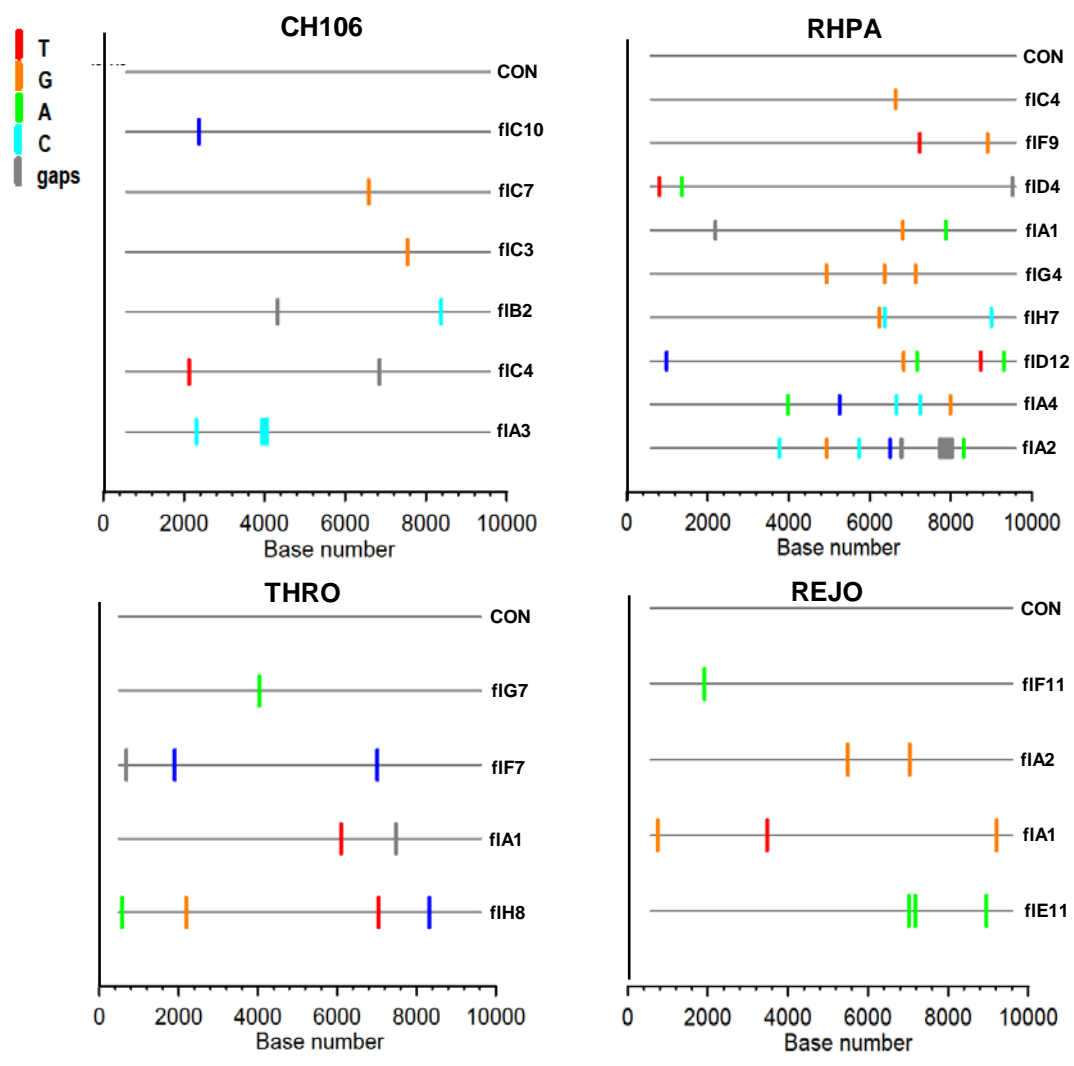


Figure S1. Derivation of T/F sequences for subjects CH106, RHPA, THRO and REJO. 9 kb SG-amplicons were generated from plasma vRNA/cDNA. Several SG-amplicons were generated for each subject, and sequenced. The results are depicted in *Highlighter* plots. The sequences start at nucleotide position 582 in the 5' LTR (30 nt downstream of the start of the U5 region) and extend to position 9,606 in the 3' LTR (30 nt upstream of the end of the R region), based on HXB2 reference sequence numbering. The T/F genome sequence (CON) was deduced from the 9 kb SG-amplicons for these 4 patients using the same approach as previously described (55).