



Figure S1:

Photograph of a female C57BL6/SJL mouse prepared for dissection of mammary glands.

Glands L3 and L4 appear blue demonstrating successful infusion and complete penetration of the gland tissue with 0.4% Trypan Blue in PBS used as marker dye.

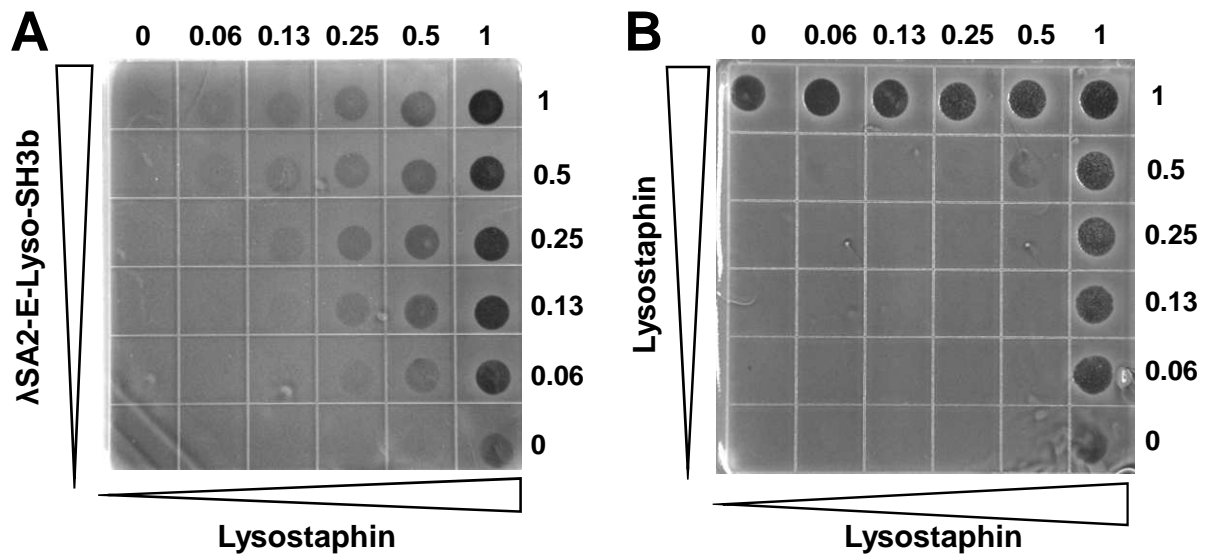


Figure S2:

Representative checkerboard plates showing synergy between λ SA2-E-Lyso-SH3b and Lysostaphin (**A**) and the additive effect observed when using Lysostaphin on both axes of the plate (**B**). 2-fold serial dilutions starting with the MIA of each protein were mixed in a 96-well plate in two dimensions and the mixed solutions spotted on a bacterial lawn of *S. aureus* Newbould 305 on a gridded agar plate. Lysis zones were observed after overnight incubation.