

Fig. S1

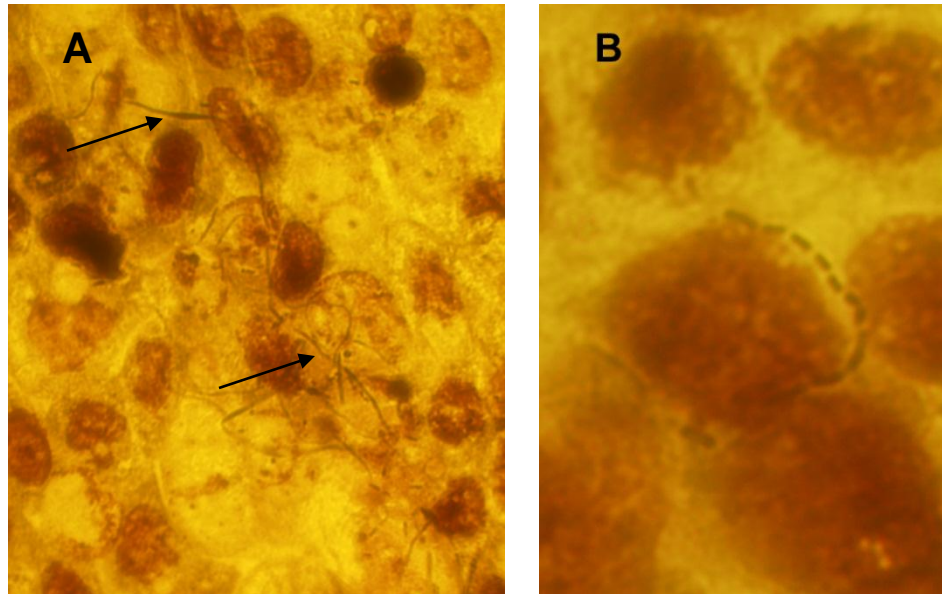


Fig. S1. Adherence and septation of *Salmonella* Enteritidis E40 filaments on Caco-2 cells. E40 cells were allowed to attach to Caco-2 cells on glass coverslips placed in 24-well tissue culture plates. After 10 min at 37°C, the coverslips were removed, rinsed with Hanks' Balanced Salt Solution, then fixed with 50% methanol for 1 min, stained with 0.3% crystal violet, rinsed with tap water, and air-dried. The coverslips were inverted onto microscope slides and secured with clear fingernail polish on the edges prior to viewing under the microscope. (A) Filaments (arrows) adhering to Caco-2 cells. (B) Enlarged image of a septating filament.