

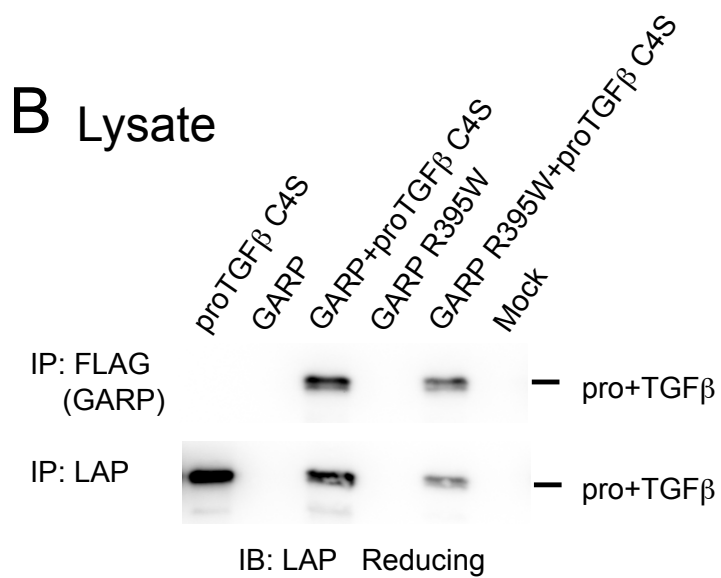
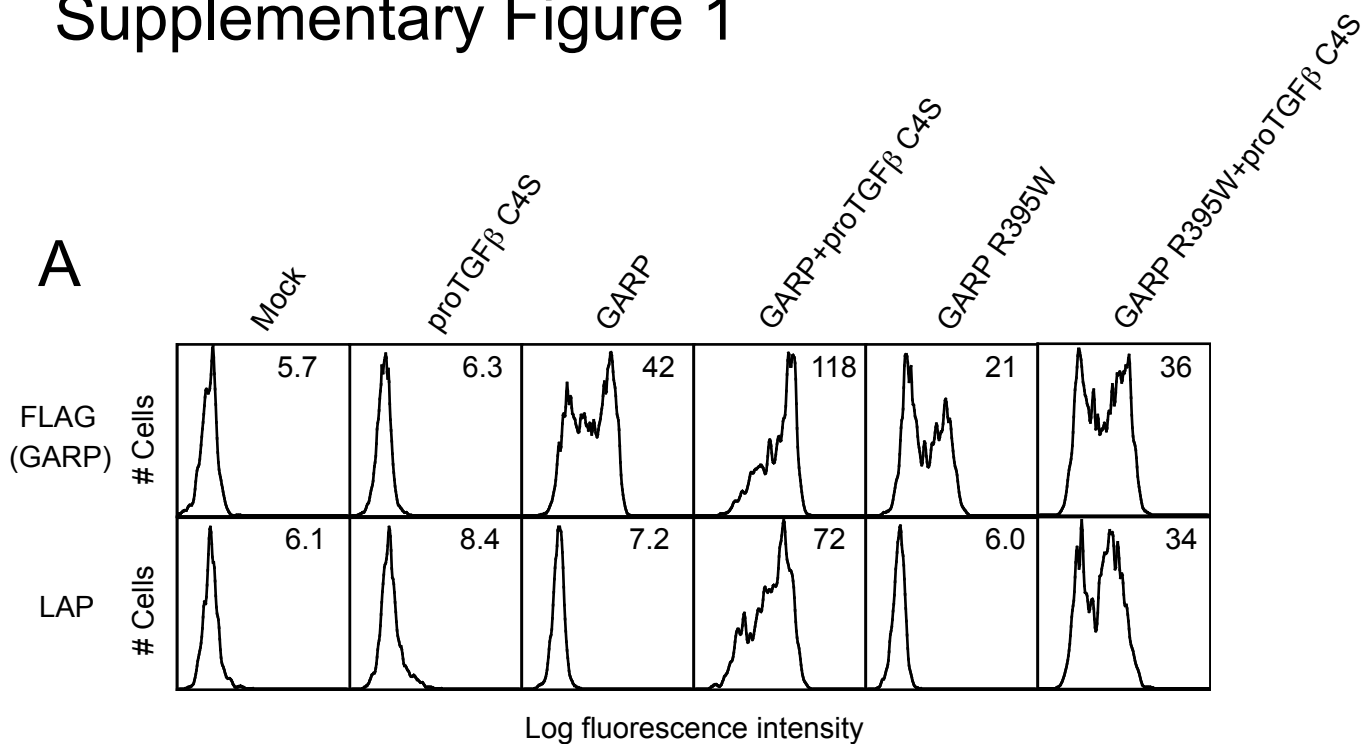
Supplementary Figure Legends

Supplementary Figure 1. The GARP R395W mutant associates with the proTGF β 1 C4S mutant. A. The GARP R395W mutant supports surface LAP1 expression. 293T cells were transfected with the indicated plasmids. Surface FLAG-GARP and LAP1 expression were measured by FACS. B. The GARP R395W mutant interacts with proTGF β 1. 293T cells were transfected with the indicated plasmids. The clarified lysates were immunoprecipitated with the indicated antibodies, and blotted with an anti-LAP1 antibody.

Supplementary Figure 2. A. Surface expression levels of α_v integrins in stable cell lines. Stable 293T cell lines were generated as described in Methods, and surface expression of α_v integrins in mock stable cell line (upper panel) and α_v integrin stable cell lines (lower panel) was measured by FACS with antibodies against α_v and β subunits. B. GARP interacts with proTGF β 1 in the presence of the ECR3E fragment. 293T cells were transfected with the indicated plasmids. The clarified lysates were immunoprecipitated with the indicated antibodies, and blotted with an anti-LAP1 antibody.

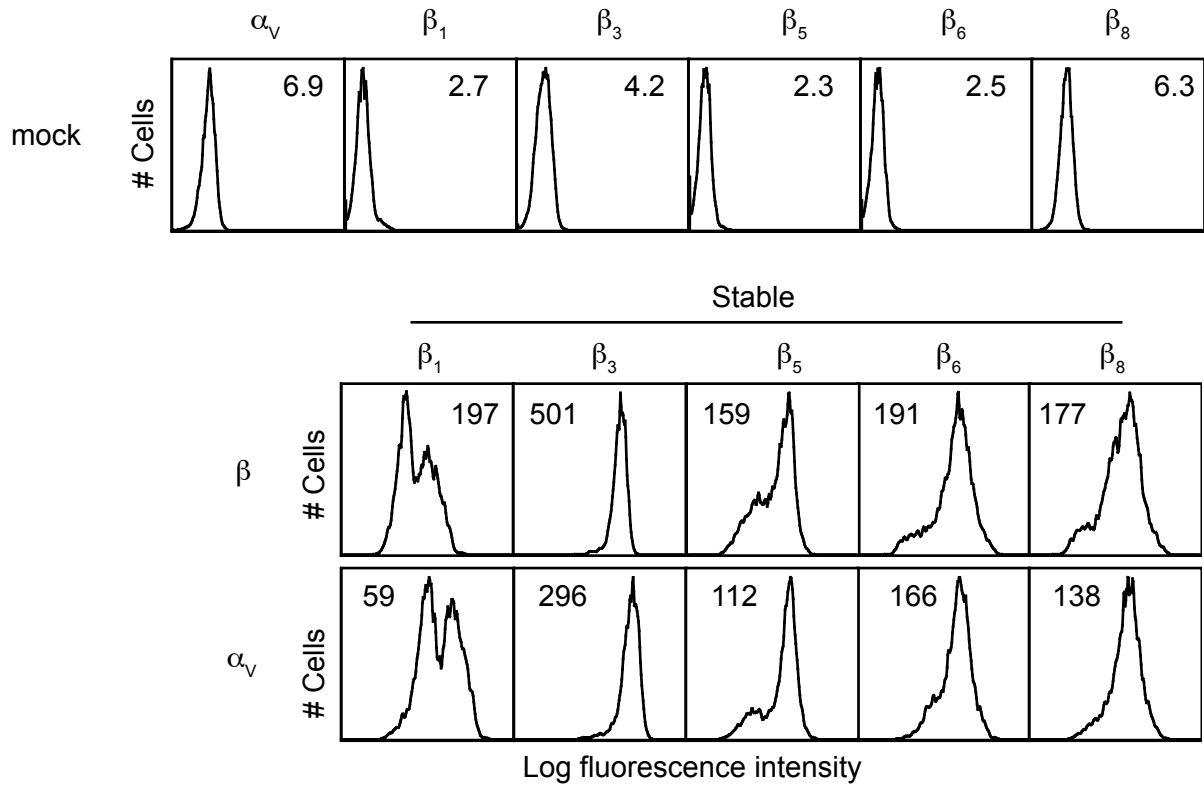
Supplementary Figure 3. Gel filtration profile for the sGARP-proTGF β complex and the sGARP-proTGF β - $\alpha_v\beta_6$ ternary complex.

Supplementary Figure 1

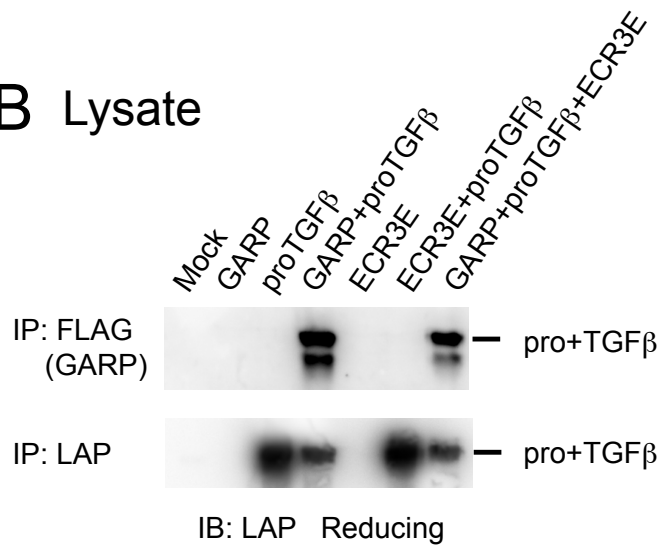


Supplementary Figure 2

A



B Lysate



Supplementary Figure 3

