

BOLD TaxonID Tree

Project : MERGED: {MBFC,FPFL,IPCOM,MBFA,MBFB,SBF}

Subprojects : Acanthurids and Holocentrids[MBFC]

Barcoding French Polynesia fish larvae[FPFL]

Indo-Pacific reef fish community assembly[IPCOM]

Moorea Biocode Fishes I[MBFA]

Moorea Biocode Fishes II[MBFB]

SWIO Biocode Fishes[SBF]

Date : 30-January-2012

Data Type : Nucleotide

Distance Model : Kimura 2 Parameter

Marker : COI-5P

Codon Positions : 1st, 2nd, 3rd

Labels : SampleID, Family,

Filters : Length > 200

Colorization : tax_family

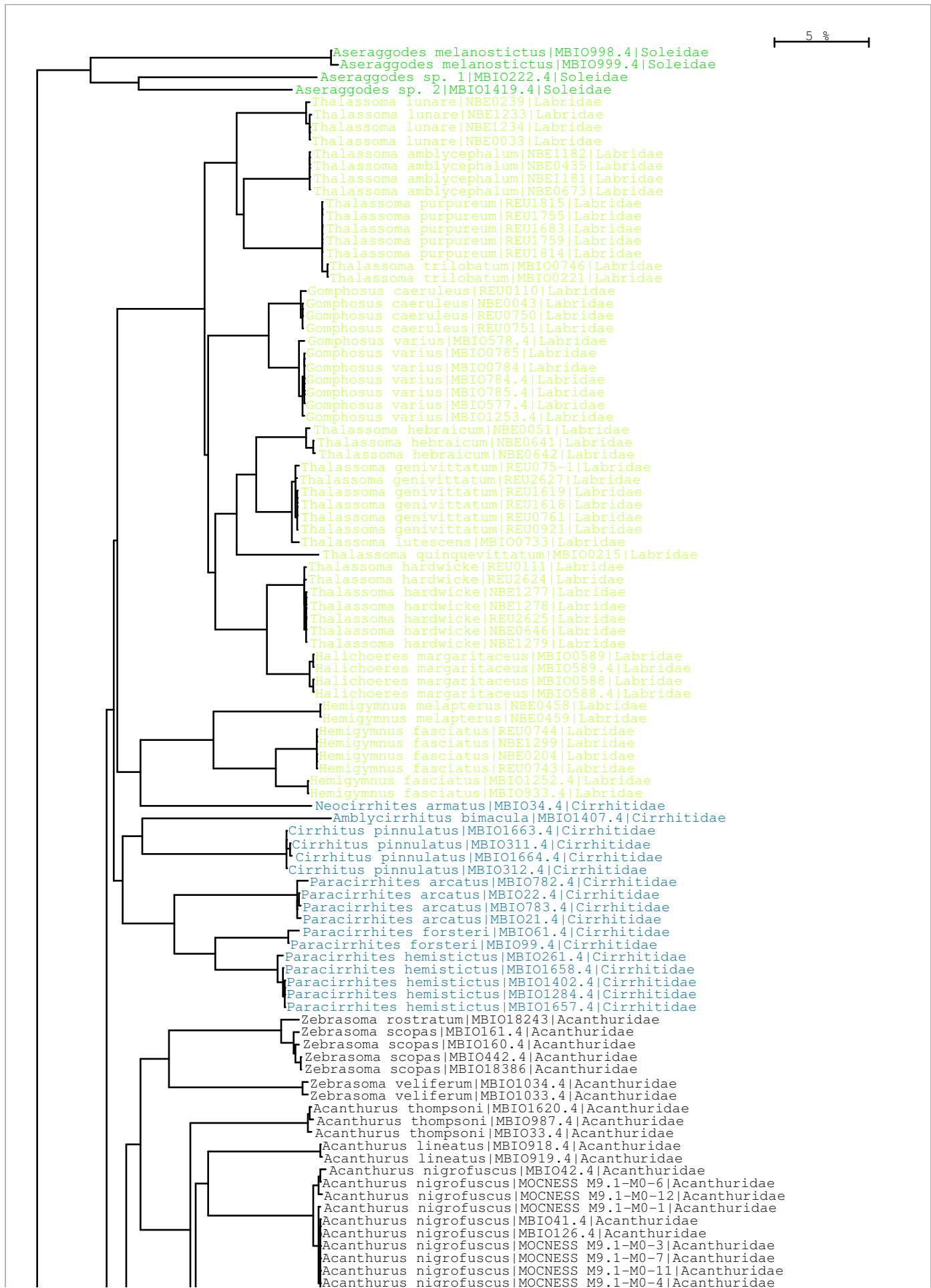
Sequence Count : 1387

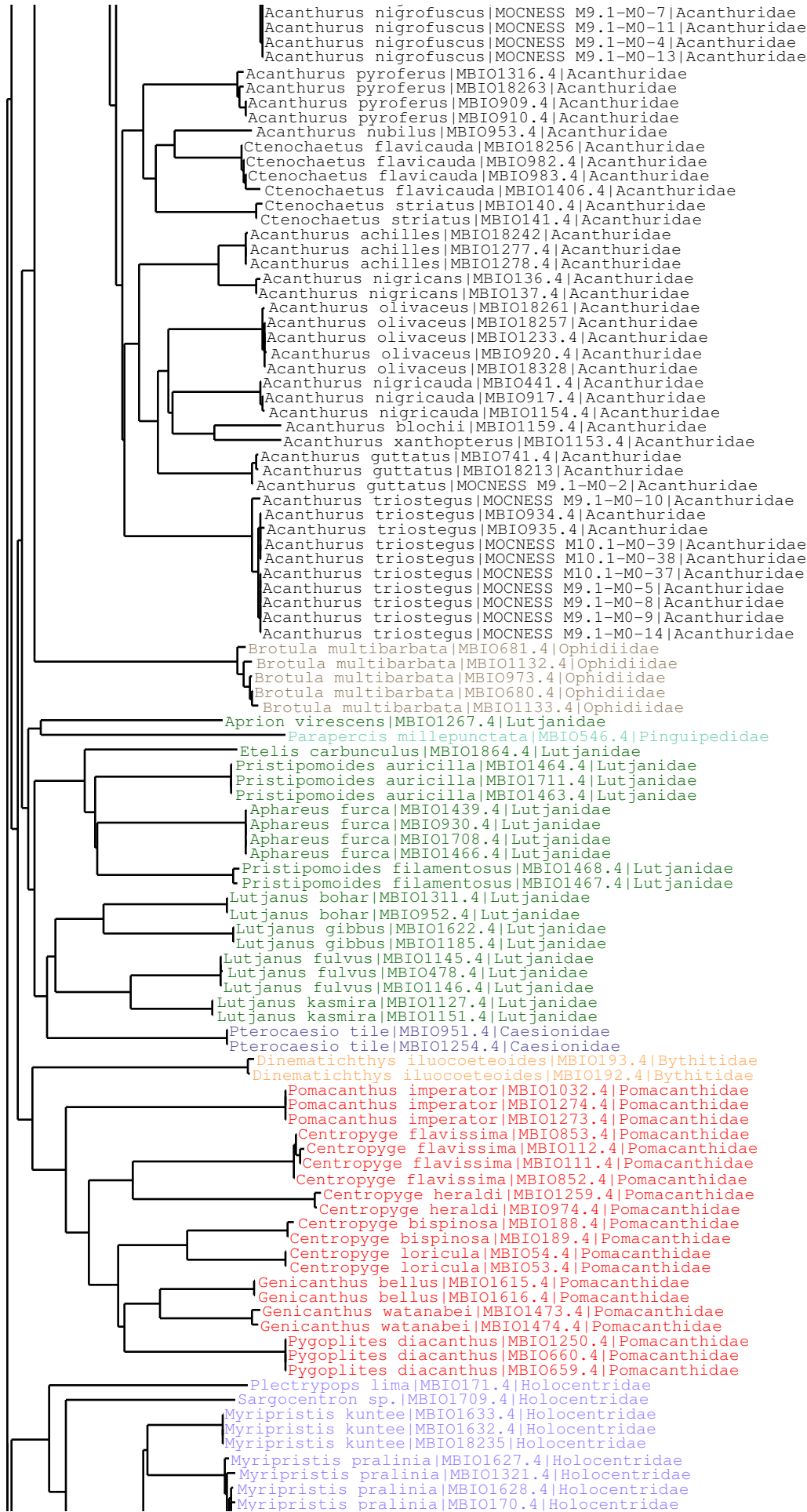
Species count : 470

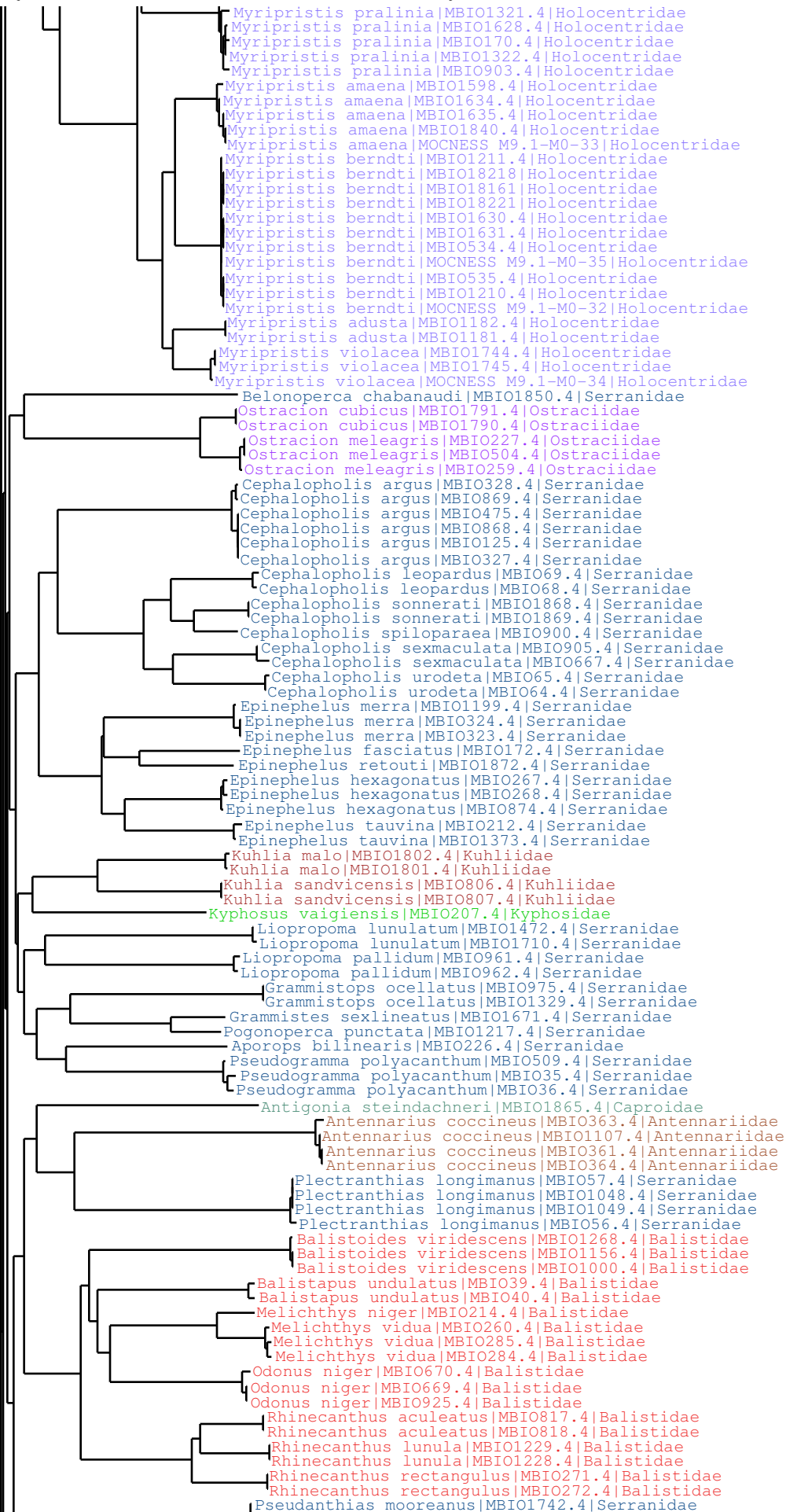
Genus count : 201

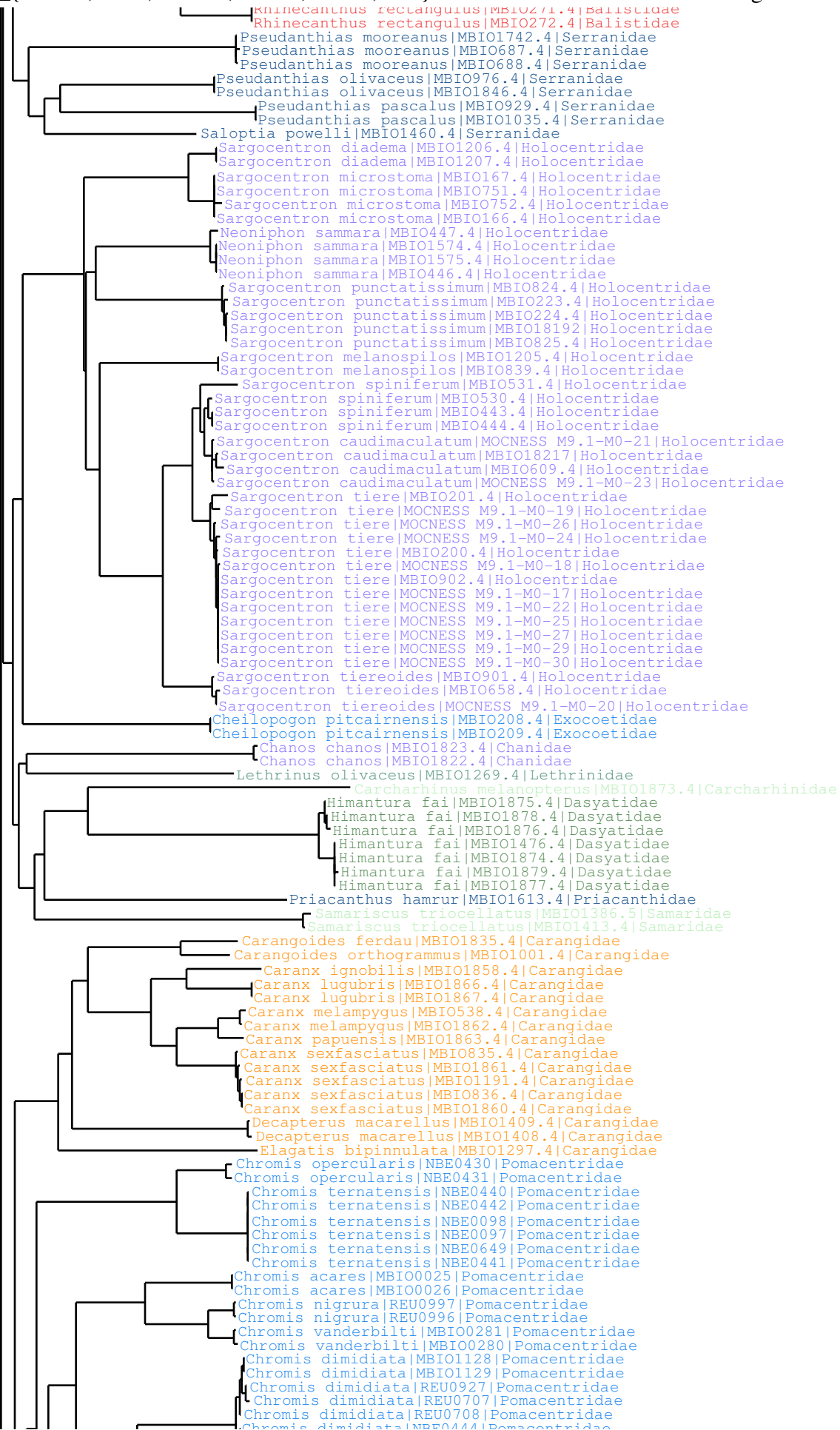
Family count : 66

Unidentified : 0

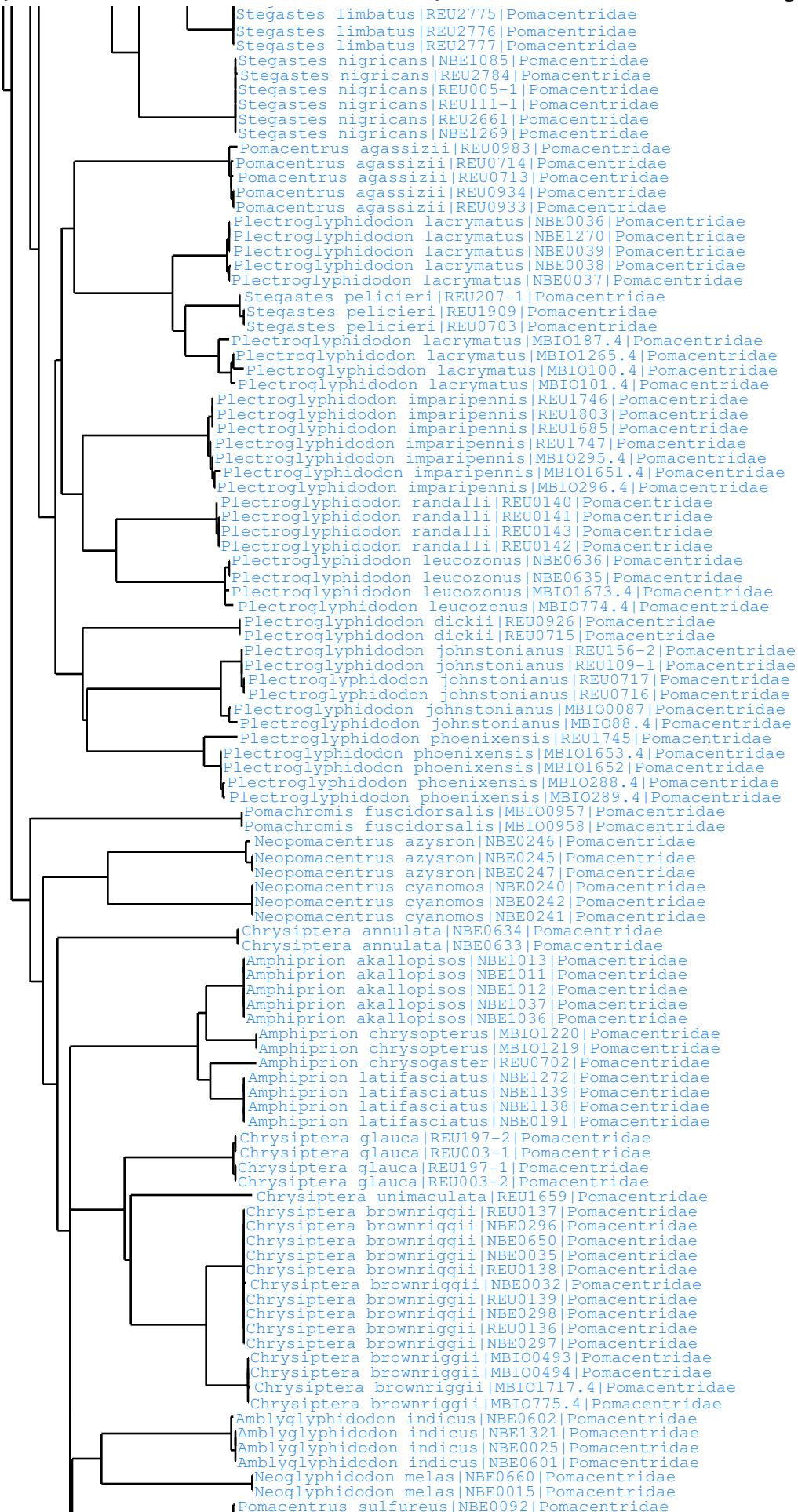


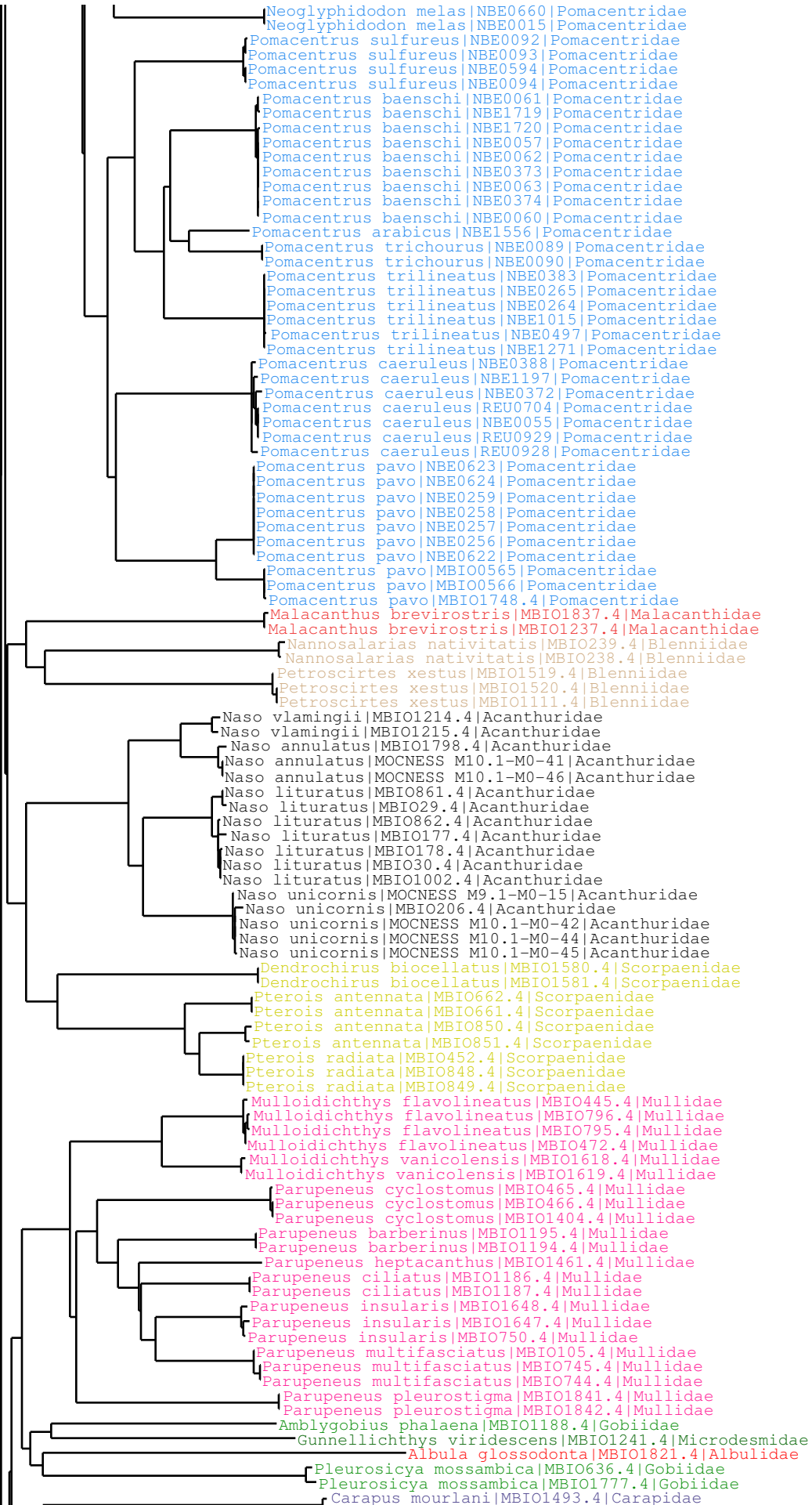


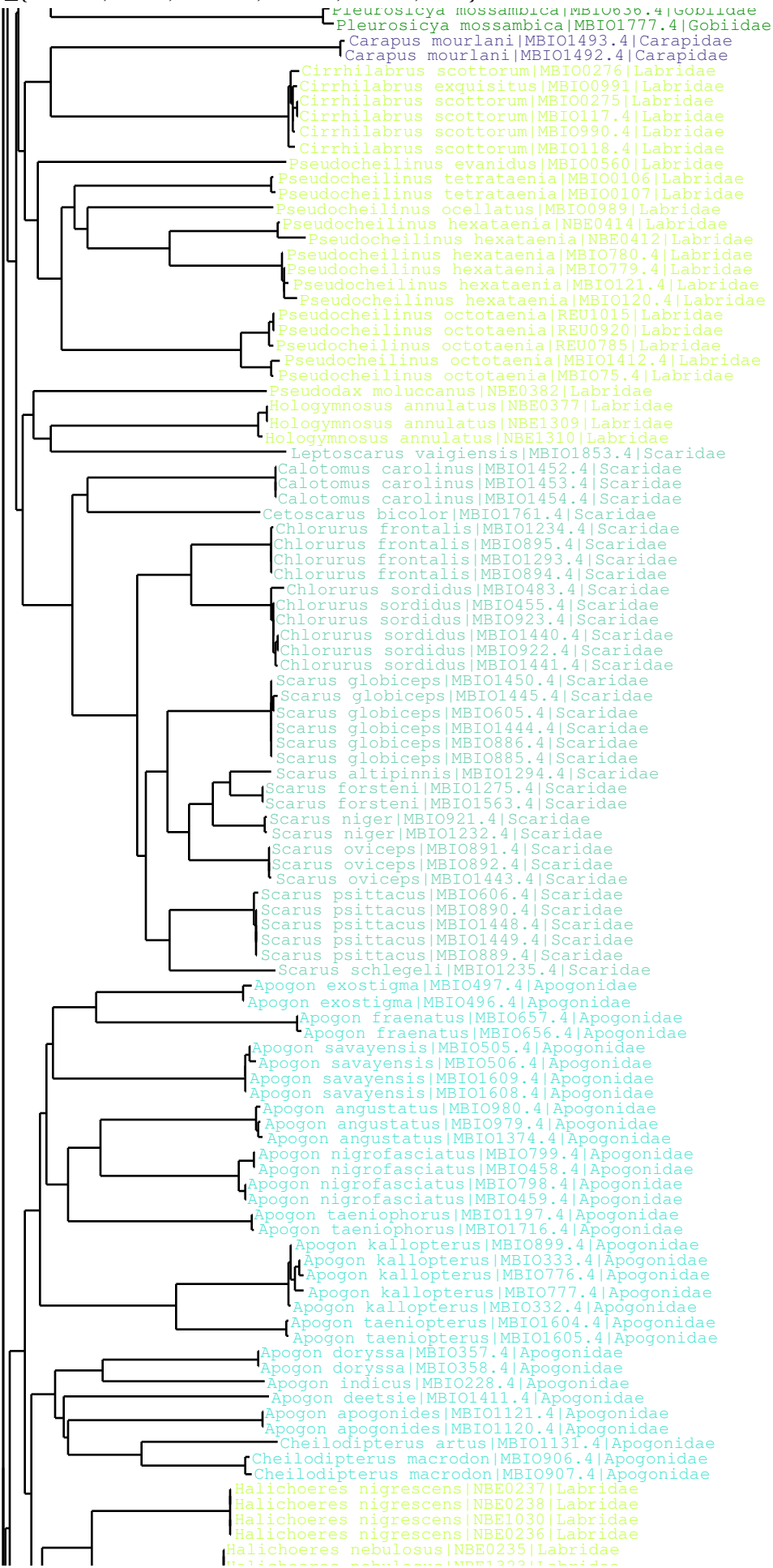


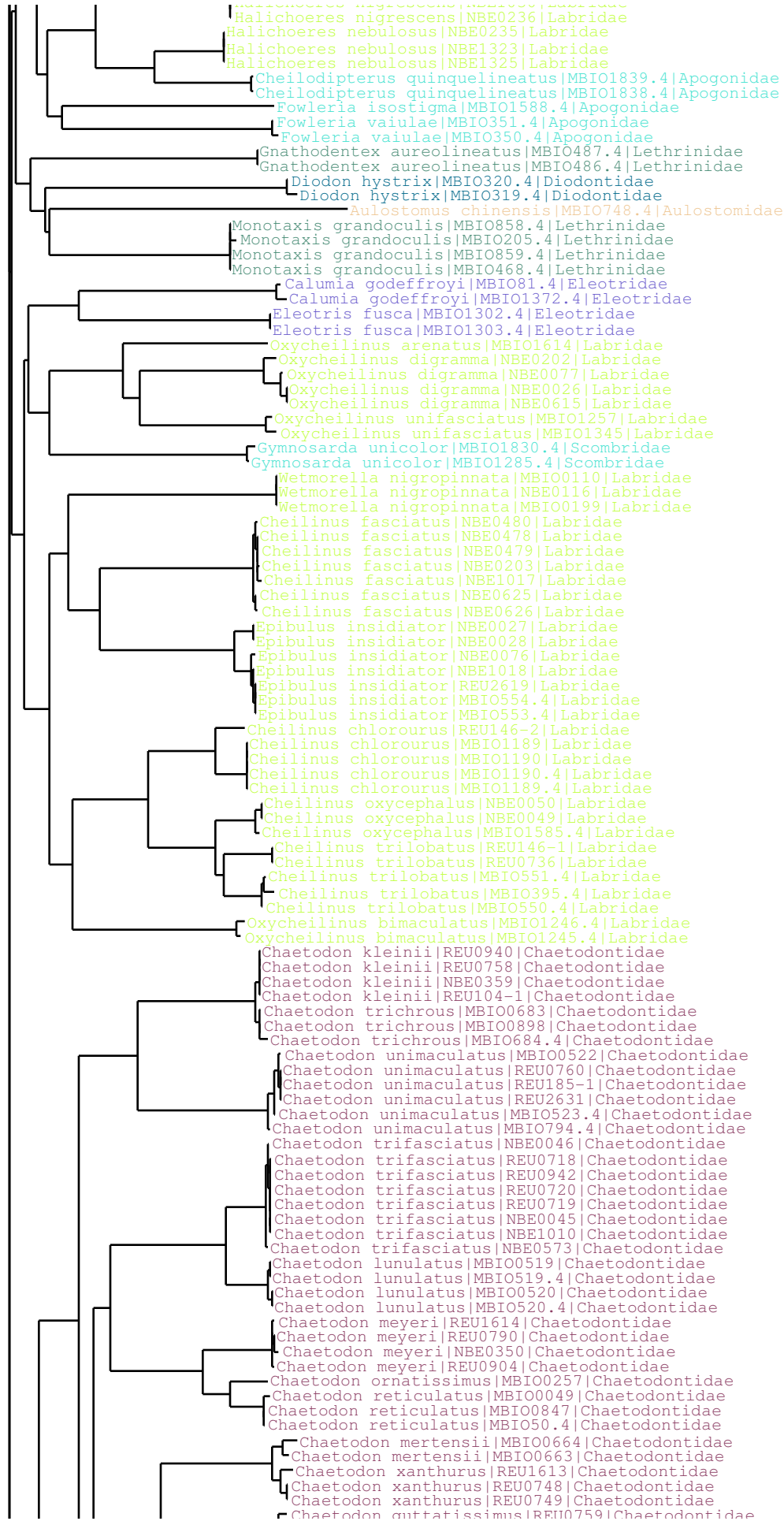


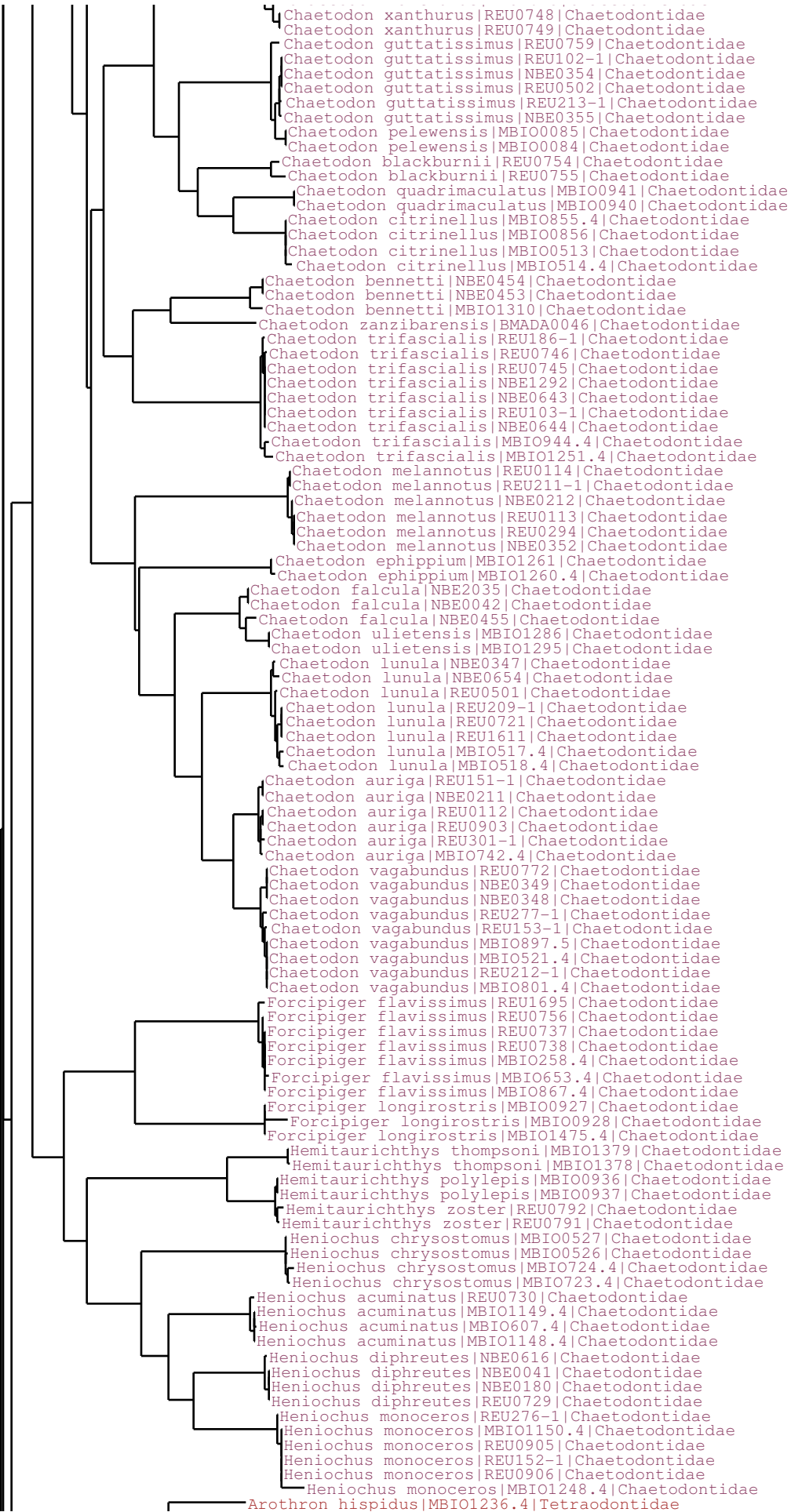
Chromis dimidiata|REU0707|Pomacentridae
 Chromis dimidiata|REU0708|Pomacentridae
 Chromis dimidiata|NBE0444|Pomacentridae
 Chromis dimidiata|NBE0447|Pomacentridae
 Chromis dimidiata|NBE0448|Pomacentridae
 Chromis dimidiata|REU0706|Pomacentridae
 Chromis dimidiata|NBE0056|Pomacentridae
 Chromis agilis|MBIO1224|Pomacentridae
 Chromis iomelas|MBIO0095|Pomacentridae
 Chromis iomelas|MBIO96.4|Pomacentridae
 Chromis alpha|MBIO0946|Pomacentridae
 Chromis alpha|MBIO0947|Pomacentridae
 Chromis weberi|NBE1239|Pomacentridae
 Chromis weberi|NBE1238|Pomacentridae
 Chromis xanthochira|NBE0439|Pomacentridae
 Chromis xanthochira|NBE0105|Pomacentridae
 Chromis xanthochira|REU0709|Pomacentridae
 Chromis xanthochira|NBE0196|Pomacentridae
 Chromis xanthochira|NBE0112|Pomacentridae
 Chromis xanthochira|NBE0595|Pomacentridae
 Chromis xanthura|MBIO0945|Pomacentridae
 Chromis xanthura|MBIO1264|Pomacentridae
 Chromis chrysurā|REU0712|Pomacentridae
 Chromis chrysurā|REU0711|Pomacentridae
 Chromis chrysurā|REU0986|Pomacentridae
 Chromis chrysurā|REU0710|Pomacentridae
 Chromis atripectoralis|NBE0024|Pomacentridae
 Chromis atripectoralis|NBE1076|Pomacentridae
 Chromis atripectoralis|NBE1019|Pomacentridae
 Chromis atripectoralis|NBE0023|Pomacentridae
 Chromis atripectoralis|MBIO764.4|Pomacentridae
 Chromis atripectoralis|MBIO763.4|Pomacentridae
 Chromis viridis|MBIO490.4|Pomacentridae
 Chromis viridis|MBIO489.4|Pomacentridae
 Chromis viridis|NBE1072|Pomacentridae
 Chromis viridis|NBE1074|Pomacentridae
 Chromis viridis|NBE1073|Pomacentridae
 Chromis viridis|NBE1075|Pomacentridae
 Chromis viridis|REU0118|Pomacentridae
 Chromis viridis|REU077-1|Pomacentridae
 Chromis viridis|REU269-1|Pomacentridae
 Chromis viridis|MBIO768.4|Pomacentridae
 Chromis viridis|MBIO769.4|Pomacentridae
 Dascyllus aruanus|REU004-2|Pomacentridae
 Dascyllus aruanus|NBE0188|Pomacentridae
 Dascyllus aruanus|REU004-1|Pomacentridae
 Dascyllus aruanus|REU2764|Pomacentridae
 Dascyllus aruanus|REU2765|Pomacentridae
 Dascyllus aruanus|NBE0189|Pomacentridae
 Dascyllus aruanus|NBE0187|Pomacentridae
 Dascyllus aruanus|MBIO787.4|Pomacentridae
 Dascyllus aruanus|MBIO786.4|Pomacentridae
 Dascyllus aruanus|MBIO556.4|Pomacentridae
 Dascyllus aruanus|MBIO557.4|Pomacentridae
 Dascyllus carneus|NBE0598|Pomacentridae
 Dascyllus carneus|NBE0599|Pomacentridae
 Dascyllus carneus|NBE0597|Pomacentridae
 Dascyllus carneus|NBE0199|Pomacentridae
 Dascyllus flavicaudus|MBIO0045|Pomacentridae
 Dascyllus flavicaudus|MBIO0046|Pomacentridae
 Dascyllus flavicaudus|MBIO773.4|Pomacentridae
 Dascyllus trimaculatus|REU0931|Pomacentridae
 Dascyllus trimaculatus|REU0932|Pomacentridae
 Dascyllus trimaculatus|REU0988|Pomacentridae
 Dascyllus trimaculatus|MBIO1262.4|Pomacentridae
 Dascyllus trimaculatus|MBIO1043.4|Pomacentridae
 Abudefduf margariteus|REU0925|Pomacentridae
 Abudefduf margariteus|REU0981|Pomacentridae
 Abudefduf sparoides|REU0970|Pomacentridae
 Abudefduf sparoides|REU195-1|Pomacentridae
 Abudefduf sparoides|NBE0640|Pomacentridae
 Abudefduf sparoides|NBE0198|Pomacentridae
 Abudefduf sparoides|REU0969|Pomacentridae
 Abudefduf sparoides|REU0971|Pomacentridae
 Abudefduf sexfasciatus|NBE0185|Pomacentridae
 Abudefduf sexfasciatus|NBE0184|Pomacentridae
 Abudefduf vaigiensis|REU1687|Pomacentridae
 Abudefduf vaigiensis|NBE0251|Pomacentridae
 Abudefduf sexfasciatus|MBIO707.4|Pomacentridae
 Abudefduf sexfasciatus|MBIO706.4|Pomacentridae
 Abudefduf septemfasciatus|NBE0017|Pomacentridae
 Abudefduf septemfasciatus|MBIO451.4|Pomacentridae
 Abudefduf septemfasciatus|MBIO450.4|Pomacentridae
 Abudefduf septemfasciatus|MBIO821.4|Pomacentridae
 Abudefduf sordidus|NBE0671|Pomacentridae
 Abudefduf sordidus|NBE0670|Pomacentridae
 Abudefduf sordidus|NBE0669|Pomacentridae
 Abudefduf sordidus|REU1686|Pomacentridae
 Abudefduf sordidus|REU1682|Pomacentridae
 Abudefduf sordidus|MBIO1644.4|Pomacentridae
 Stegastes lividus|REU2754|Pomacentridae
 Stegastes lividus|REU001-2|Pomacentridae
 Stegastes lividus|REU001-1|Pomacentridae
 Stegastes lividus|REU2755|Pomacentridae
 Stegastes albifasciatus|MBIO0732|Pomacentridae
 Stegastes limbatus|REU1654|Pomacentridae
 Stegastes limbatus|REU002-2|Pomacentridae
 Stegastes limbatus|REU002-1|Pomacentridae
 Stegastes limbatus|REU2774|Pomacentridae
 Stegastes limbatus|REU2775|Pomacentridae
 Stegastes limbatus|REU2776|Pomacentridae
 Stegastes limbatus|REU2777|Pomacentridae











Arothron hispidus|MBIO1236.4|Tetraodontidae

