

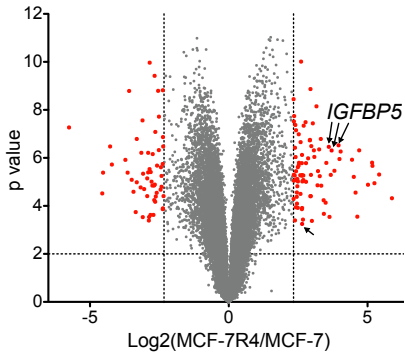
Supplementary table 1. Univariate analysis of MFS, RFS, and OS in the NKI-295 cohort.

	MFS		RFS		OS	
	HR (95% CI)	P	HR (95% CI)	P	HR (95% CI)	P
Age	0.51 (0.31-0.84)	0.0085	0.42 (0.27-0.65)	0.0001	0.42 (0.26-0.73)	0.0017
ER	0.46 (0.27-0.78)	0.0039	0.47 (0.29-0.75)	0.0015	0.20 (0.12-0.36)	<0.0001
Size	2.17(1.42-3.32)	0.0003	1.78 (1.23-2.59)	0.0024	2.17 (1.38-3.40)	0.0008
Grade 2 vs 1	2.44 (1.30-4.59)	0.0056	2.15 (1.25-3.69)	0.0056	3.26 (1.54-6.89)	0.002
Grade 3 vs 1	3.27 (1.94-5.49)	<0.0001	2.91(1.84-4.59)	<0.0001	2.46 (2.62-7.60)	<0.0001
Node 1-3 vs 0	0.56 (0.35-0.89)	0.0156	0.71 (0.47-1.07)	0.0976	0.68 (0.41-1.11)	0.1251
Node >3 vs 0	1.90 (1.03-3.52)	0.0406	1.72 (0.98-2.99)	0.0572	1.67 (0.86-3.25)	0.1336
Treatment	0.70 (0.46-1.07)	0.0964	0.76 (0.53-1.10)	0.1506	0.83 (0.53-1.29)	0.4072
<i>IGFBP1</i>	1.17 (0.51-2.65)	0.7154	1.32 (0.64-2.71)	0.4511	0.85 (0.37-1.97)	0.7073
<i>IGFBP2</i>	1.10 (0.66-1.84)	0.7101	0.99 (0.63-1.55)	0.9686	0.94 (0.55-1.62)	0.8275
<i>IGFBP3</i>	0.80 (0.35-1.79)	0.5786	0.75 (0.37-1.52)	0.4185	0.49 (0.21-1.16)	0.1043
<i>IGFBP4</i>	1.04 (0.62-1.76)	0.8853	0.95 (0.60-1.50)	0.8130	0.72 (0.42-1.25)	0.2439
<i>IGFBP5</i>	5.39 (2.86-10.2)	<0.0001	2.77 (1.59-4.82)	0.0003	2.87 (1.47-5.58)	0.0020
<i>IGFBP6</i>	1.09 (0.33-3.60)	0.8894	0.83 (0.30-2.35)	0.7237	1.42 (0.38-5.37)	0.6058

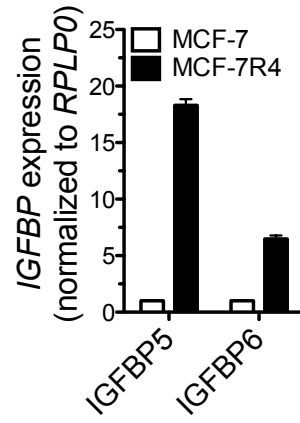
Supplementary table 2. Multivariate analysis of MFS, RFS, and OS in the NKI-295 cohort.

	MFS		RFS		OS	
	HR (95% CI)	P	HR (95% CI)	P	HR (95% CI)	P
Age	0.76 (1.12-1.32)	0.1618	0.92 (0.62-1.37)	0.6707	0.74 (0.49-1.13)	0.1619
ER	0.45 (0.24-0.84)	0.0130	0.50 (0.27-0.98)	0.0432	0.32 (0.17-0.60)	0.0004
Size	2.05 (1.23-3.55)	0.0051	1.02 (0.66-1.59)	0.9247	1.69 (1.00-3.04)	0.0504
Grade 2 vs 1	2.07 (1.00-4.72)	0.0500	0.62 (0.36-1.08)	0.0947	3.60 (1.37-12.37)	0.0076
Grade 3 vs 1	2.14 (0.98-5.09)	0.0556	0.86 (0.48-1.52)	0.5975	5.13 (1.90-17.90)	0.0007
Node 1-3 vs 0	0.82 (0.39-1.66)	0.5923	1.00 (0.48-2.00)	0.9936	0.92 (0.41-1.95)	0.8308
Node >3 vs 0	1.81 (0.80-3.91)	0.1518	1.54 (0.65-3.46)	0.3178	1.51 (0.62-3.46)	0.3534
Treatment	0.62 (0.31-1.26)	0.1836	0.78 (0.39-1.60)	0.4935	0.94 (0.45-2.03)	0.8739
<i>IGFBP1</i>	0.51 (0.17-1.58)	0.2404	0.36 (0.12-1.13)	0.0792	0.65 (0.19-2.21)	0.4844
<i>IGFBP2</i>	0.99 (0.46-2.19)	0.9869	0.80 (.36-1.76)	0.5735	1.39 (0.63-3.08)	0.4127
<i>IGFBP3</i>	1.45 (0.23-8.41)	0.6880	1.85 (0.30-10.21)	0.5000	0.54 (0.08-3.59)	0.5271
<i>IGFBP4</i>	1.52 (0.41-5.47)	0.5291	2.92 (0.81-10.38)	0.1001	1.38 (0.38-4.85)	0.6237
<i>IGFBP5</i>	4.71 (2.44-8.96)	<0.0001	3.22 (1.56-6.43)	0.0018	2.42 (1.18-4.85)	0.0172
<i>IGFBP6</i>	0.91 (0.23-3.38)	0.8874	1.01 (0.27-3.58)	0.9861	0.53 (0.12-2.31)	0.3986

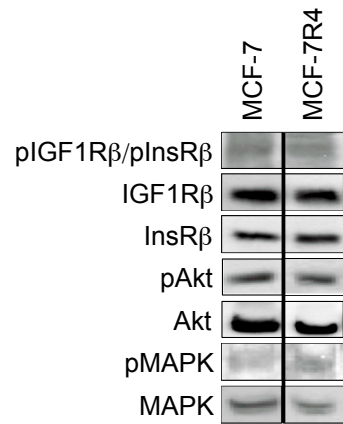
S1A



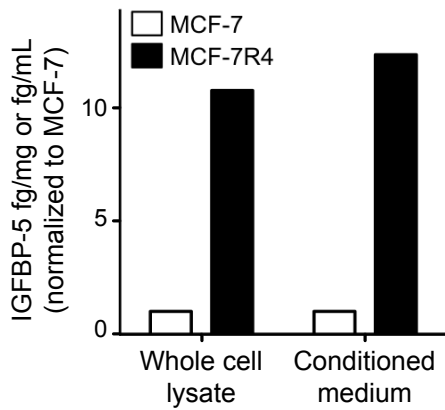
S1B



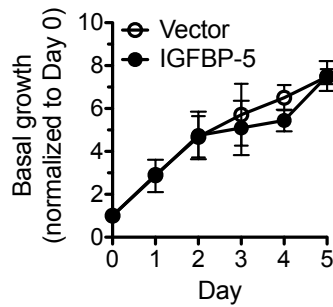
S1C



S1D



S1E



S1F

