

Supplemental data, Camp et al.

Figure S1.

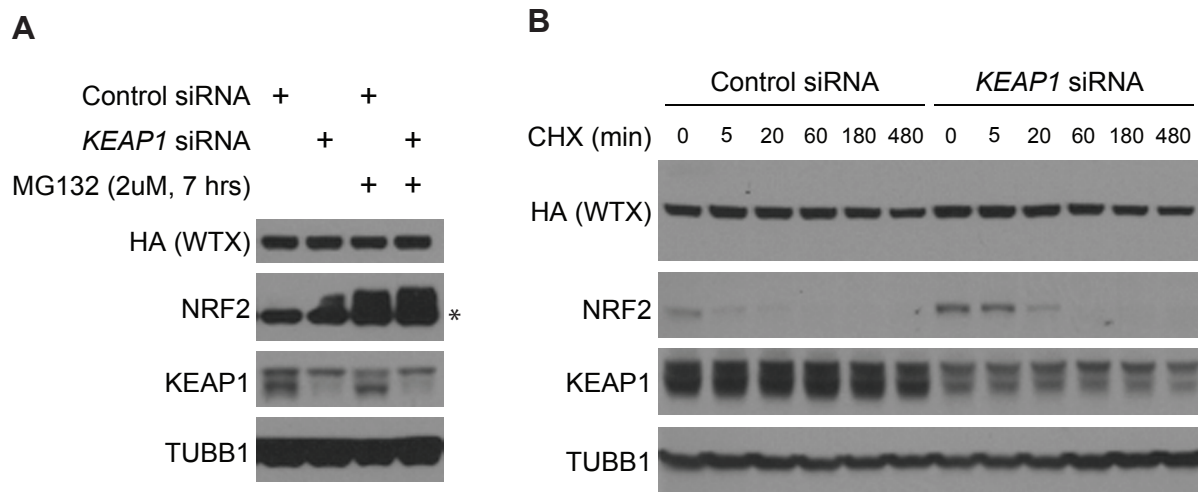


Figure S1. The steady-state levels of WTX are not regulated by KEAP1. (A) HEK293T cells stably expressing GLUE-WTX were transfected with either control siRNA or siRNA targeting *KEAP1*. Approximately 48 hours post transfection, cells were treated with MG132 for 7 hours. Cells were lysed in RIPA buffer and lysates were analyzed by Western blot. * indicates a non-specific band. (B) HEK293T cells stably expressing GLUE-WTX were transfected with either control siRNA or siRNA targeting *KEAP1*. Approximately 48 hours post transfection, cells were treated with 10 μ g/mL Cycloheximide (CHX) as indicated. Cells were lysed in RIPA buffer and lysates were analyzed by Western blot.

Figure S2. MS/MS spectra of phosphopeptides identified in GLUE-WTX complexes (related to Table I in the main text).

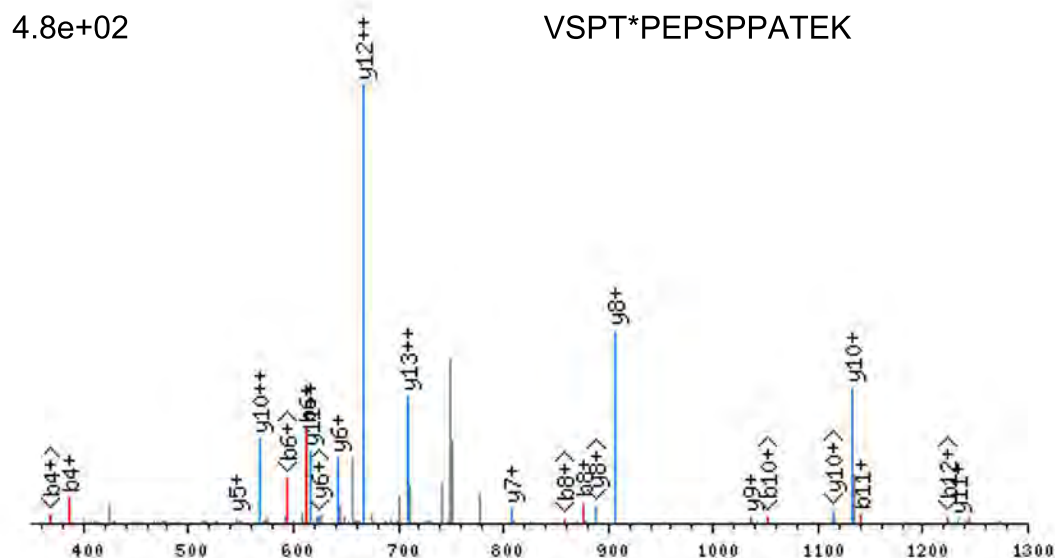
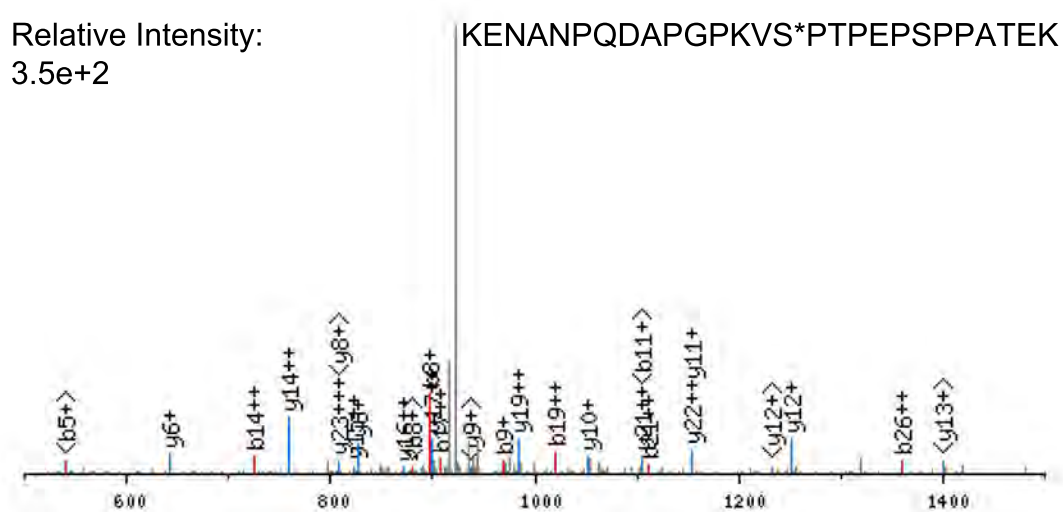


Figure S2 continued.

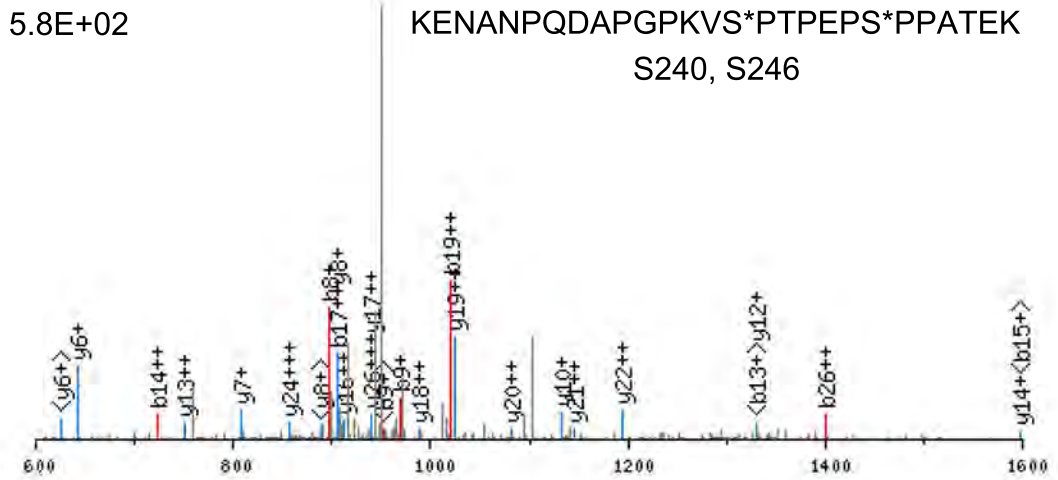
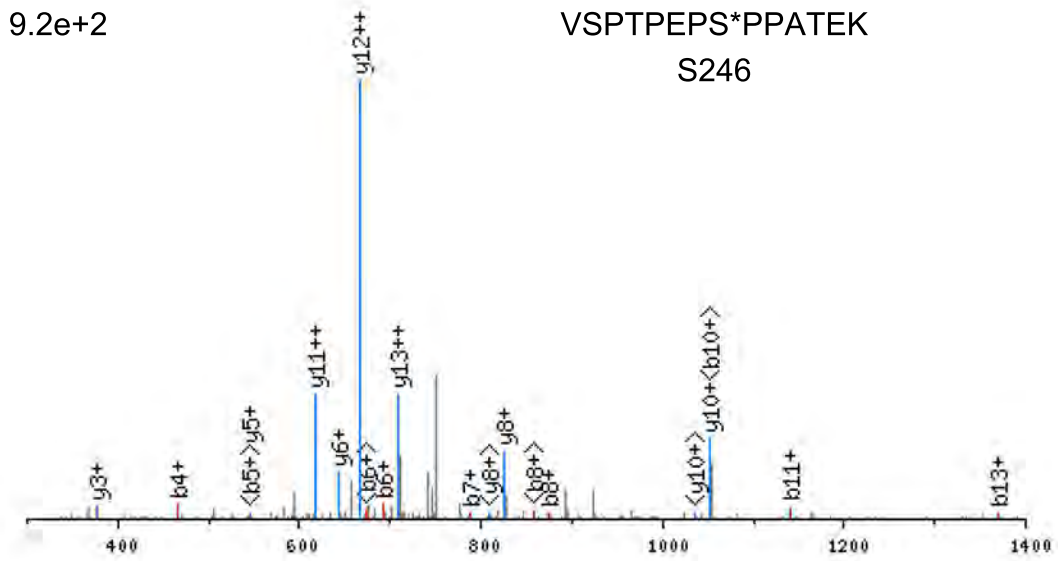
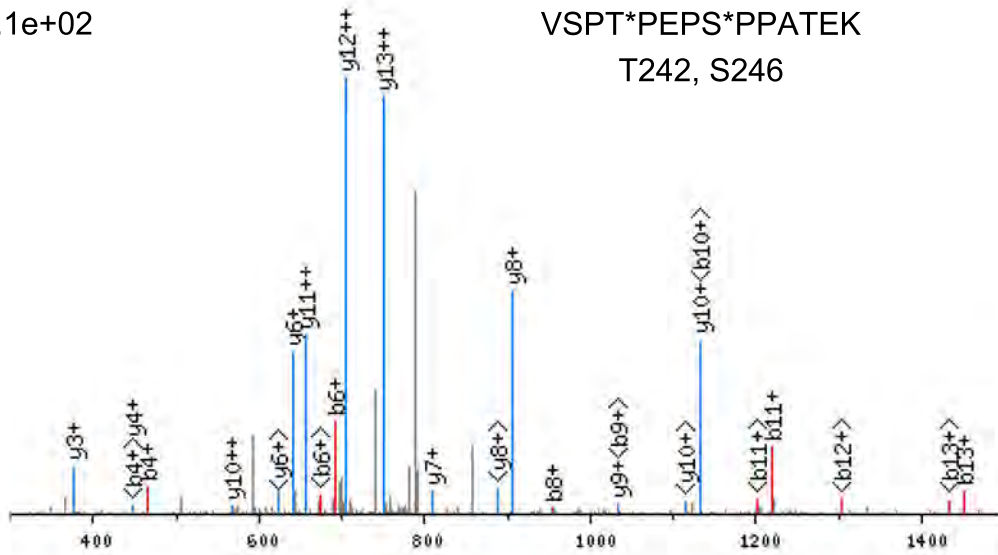


Figure S2 continued.

3.1e+02

VSPT*PEPS*PPATEK
T242, S246



1.4e+04

PAPEASS*LLEPHSPETGEK
S280

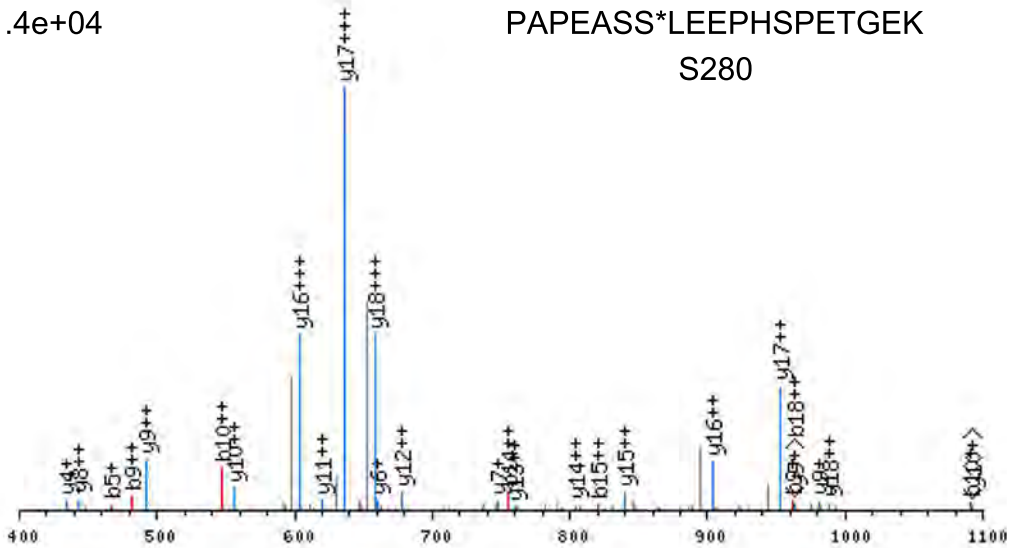
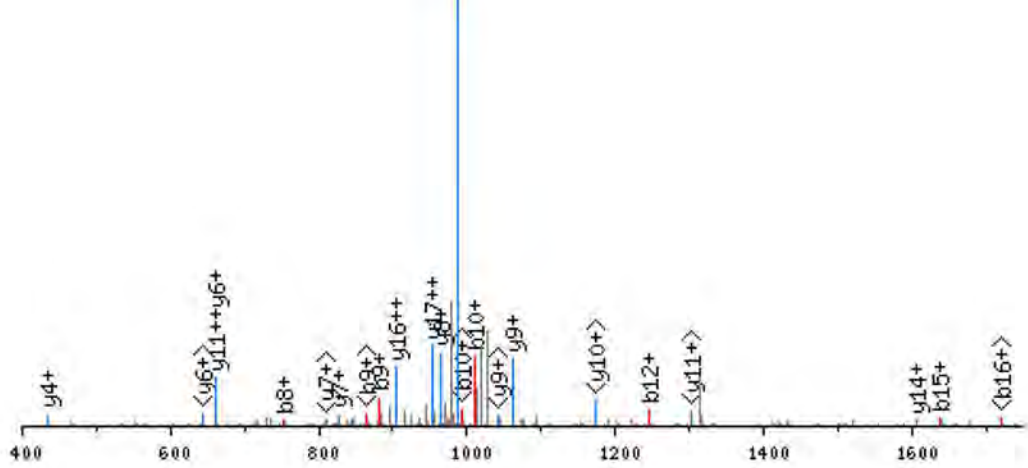


Figure S2 continued.

8.4e+03

PAPEASSLEEPHS*PETGEK
S286



6.1e+02

PAPEASS*LLEEPHS*PETGEK
S280, S286

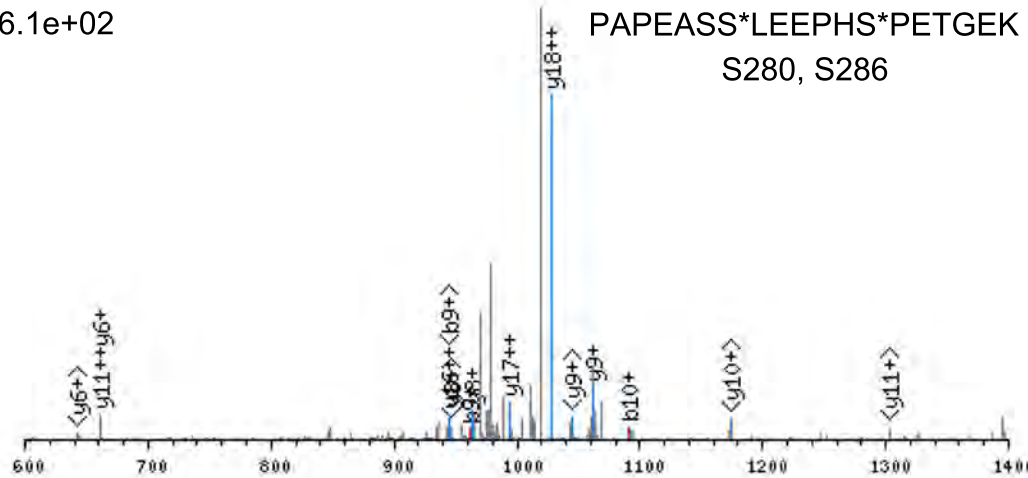


Figure S2 continued.

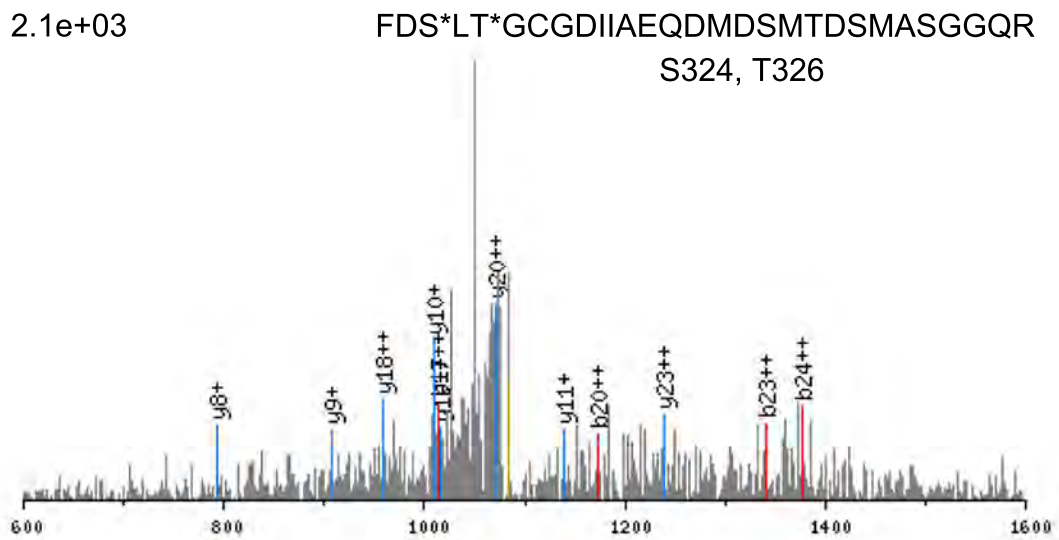
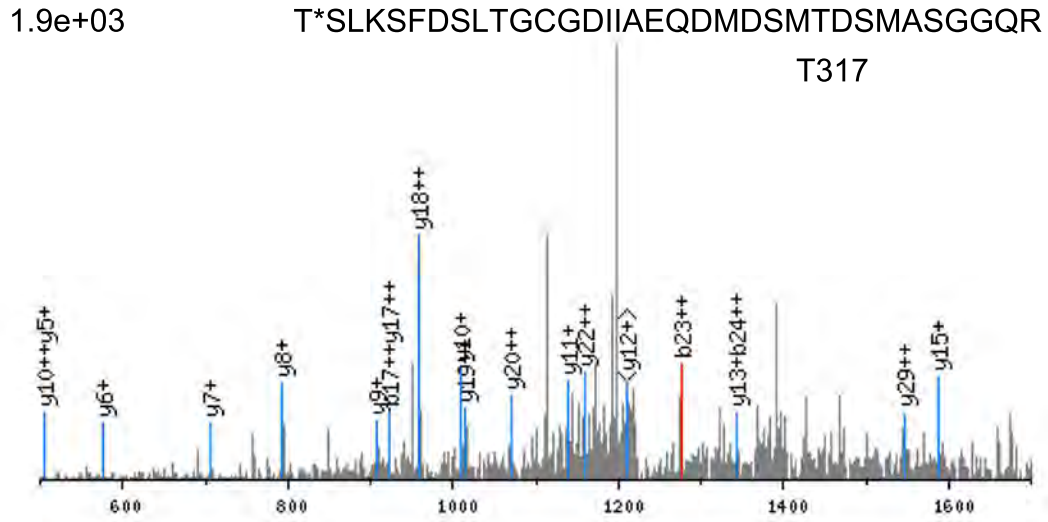


Figure S2 continued.

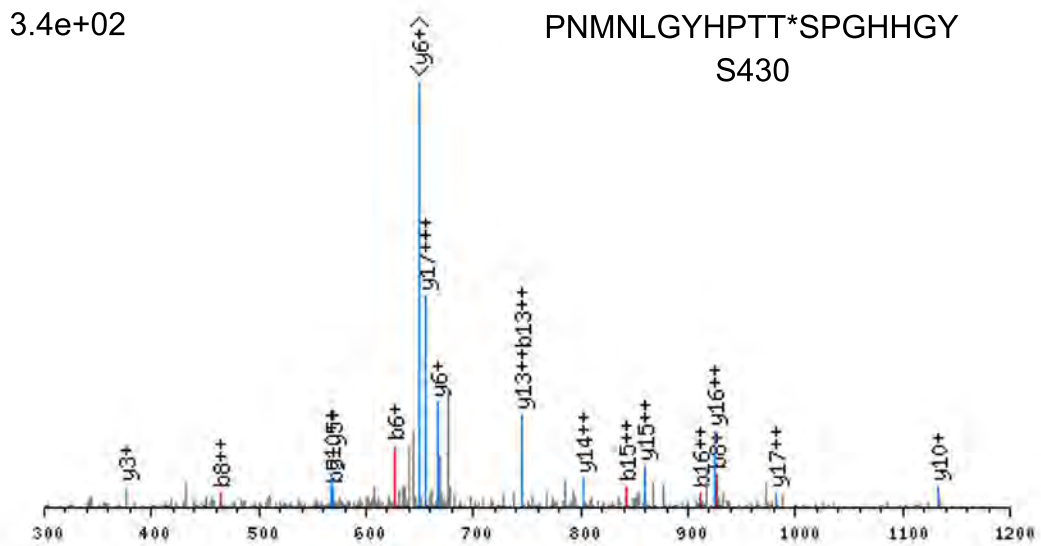
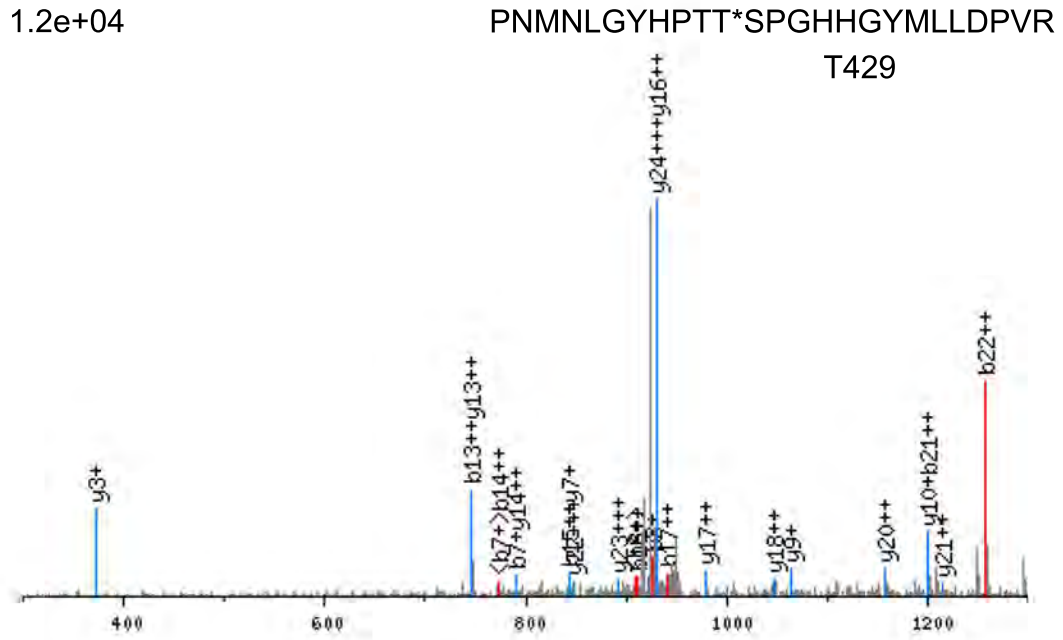
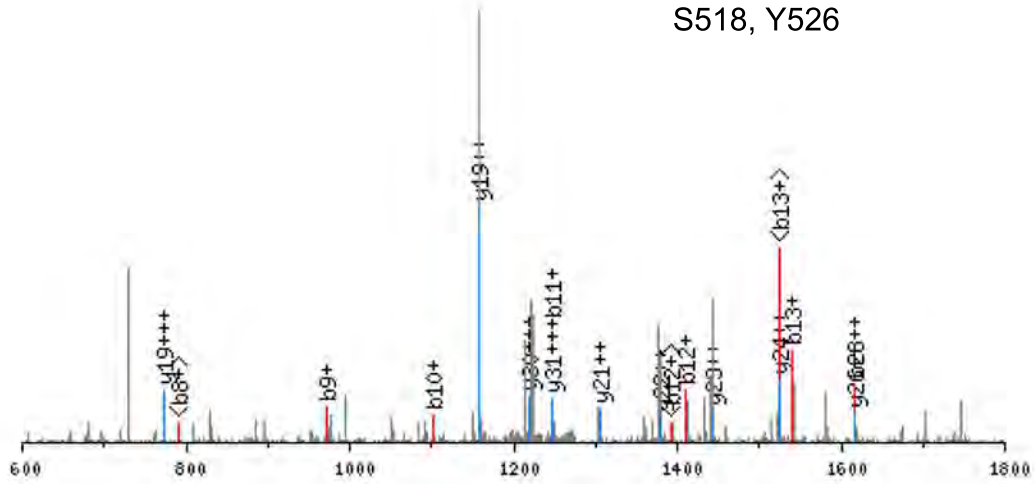


Figure S2 continued.

2.4e+04

DSYSGDALYEFYEPDDSLNS*PPGDDCLY*DLH
S518, Y526



2.1e+05

SSEMFDPFLNFEPFLSS*RPPGAMET*EEE
S548, T556

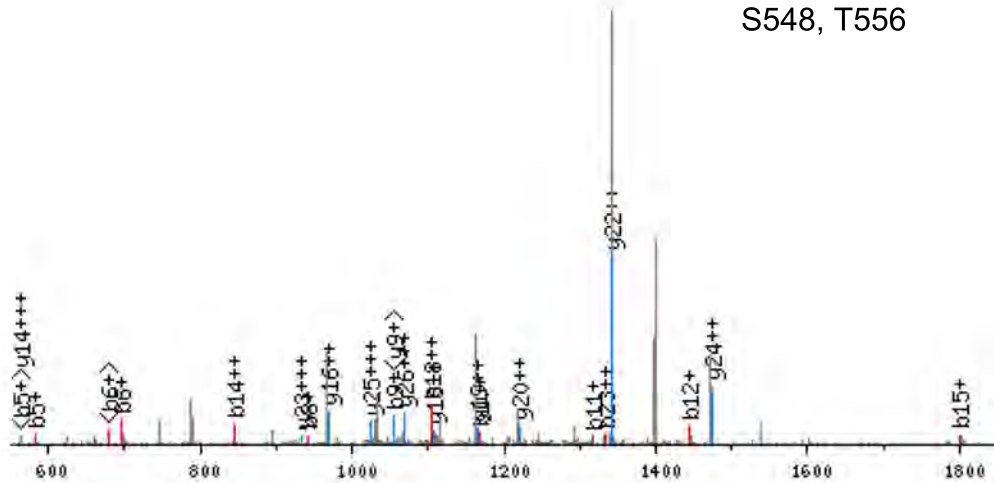


Figure S2 continued.

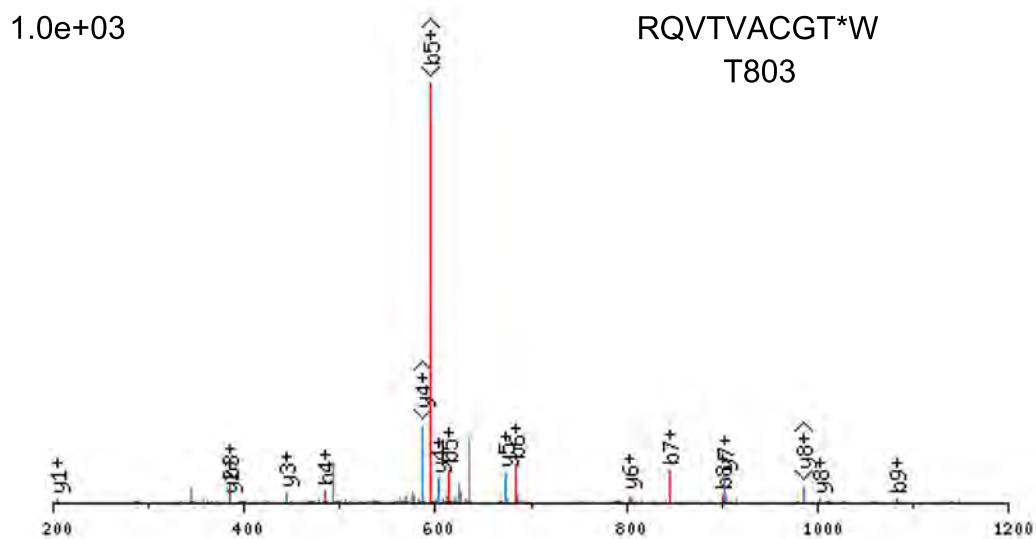
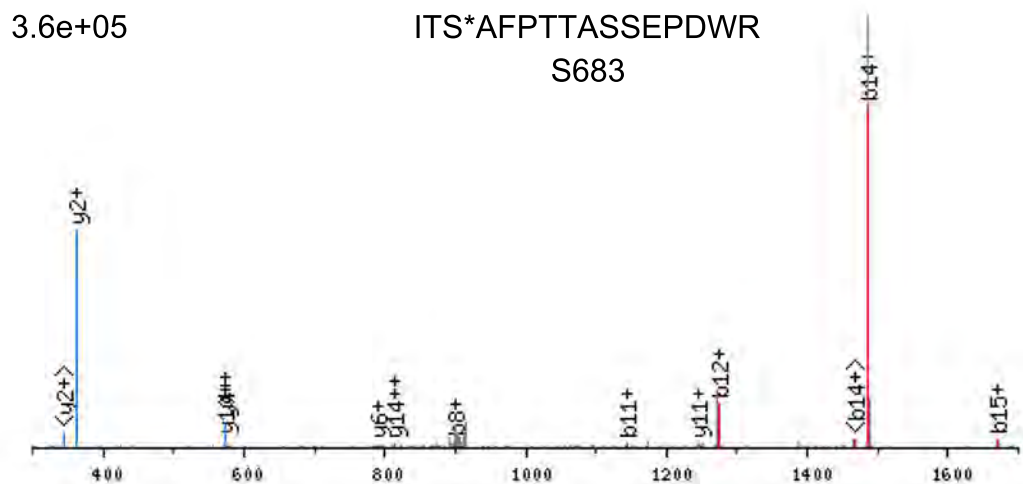


Figure S3 continued.

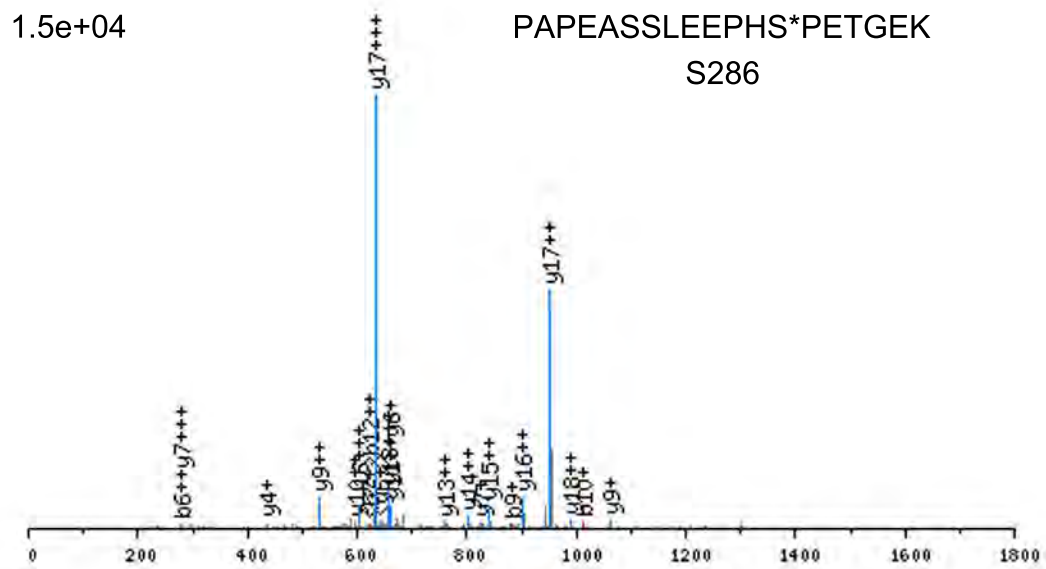
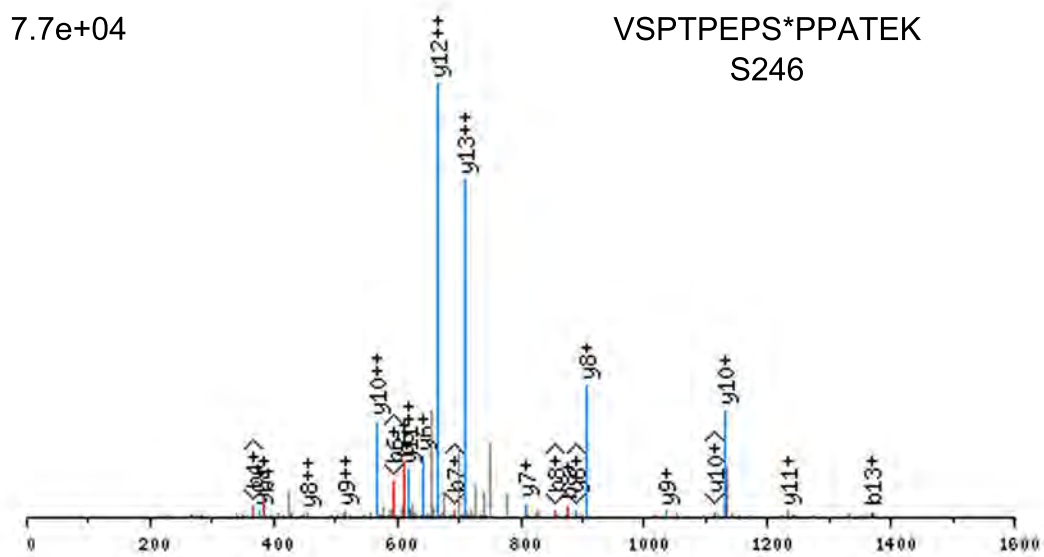


Figure S3 continued.

