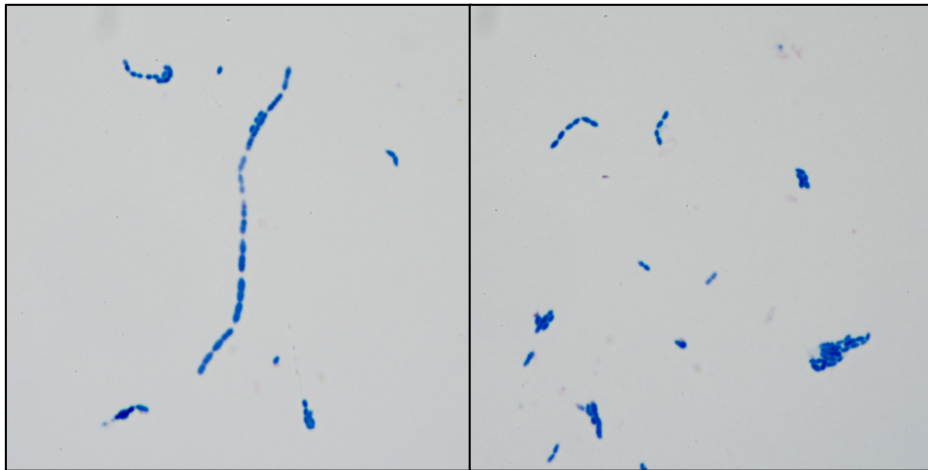
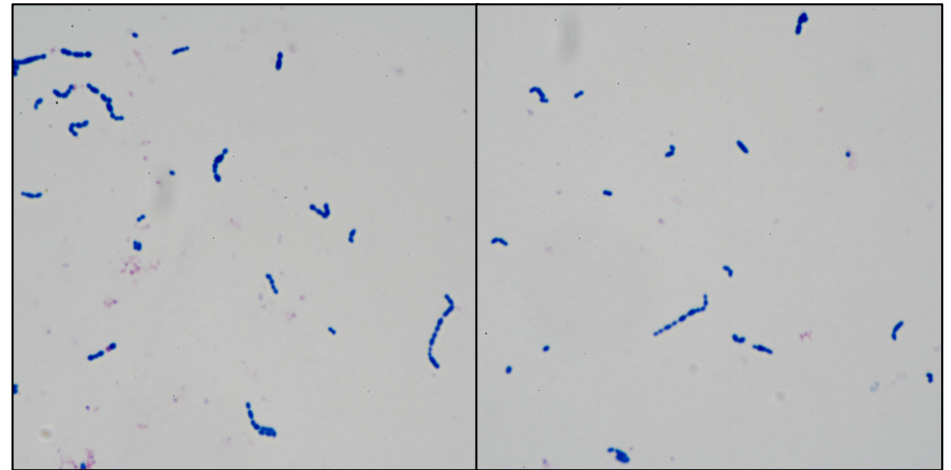


**Figure S2. Gram staining of *M. plutonius* (DAT606) and *M. plutonius*-like (DAT571) isolates.** Bacteria were cultured under anaerobic conditions at 37°C for 5 days. Images were taken at x 1,000 magnification.

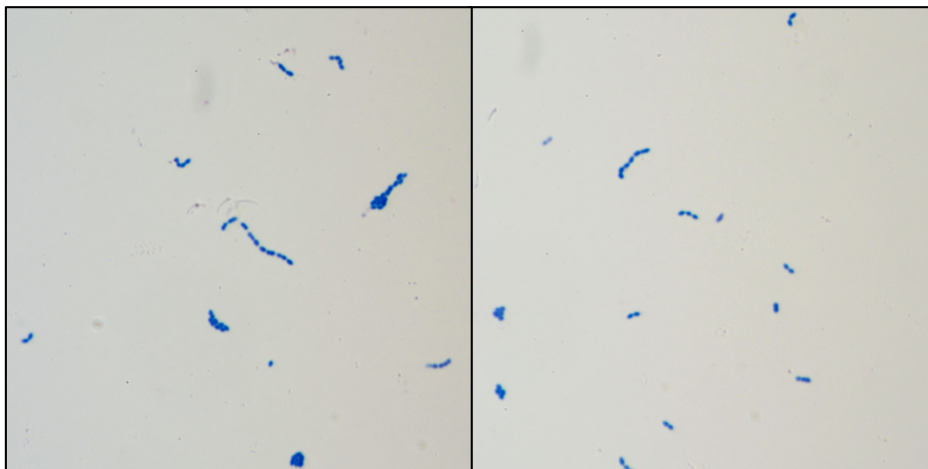
DAT606 on Medium 1



DAT571 on Medium 1



DAT606 on KSBHI agar



DAT571 on KSBHI agar

