

Supplemental FIGURE S1. Evidence for O-glycosylation heterogeneity of the AGP31 Pro-rich domain.

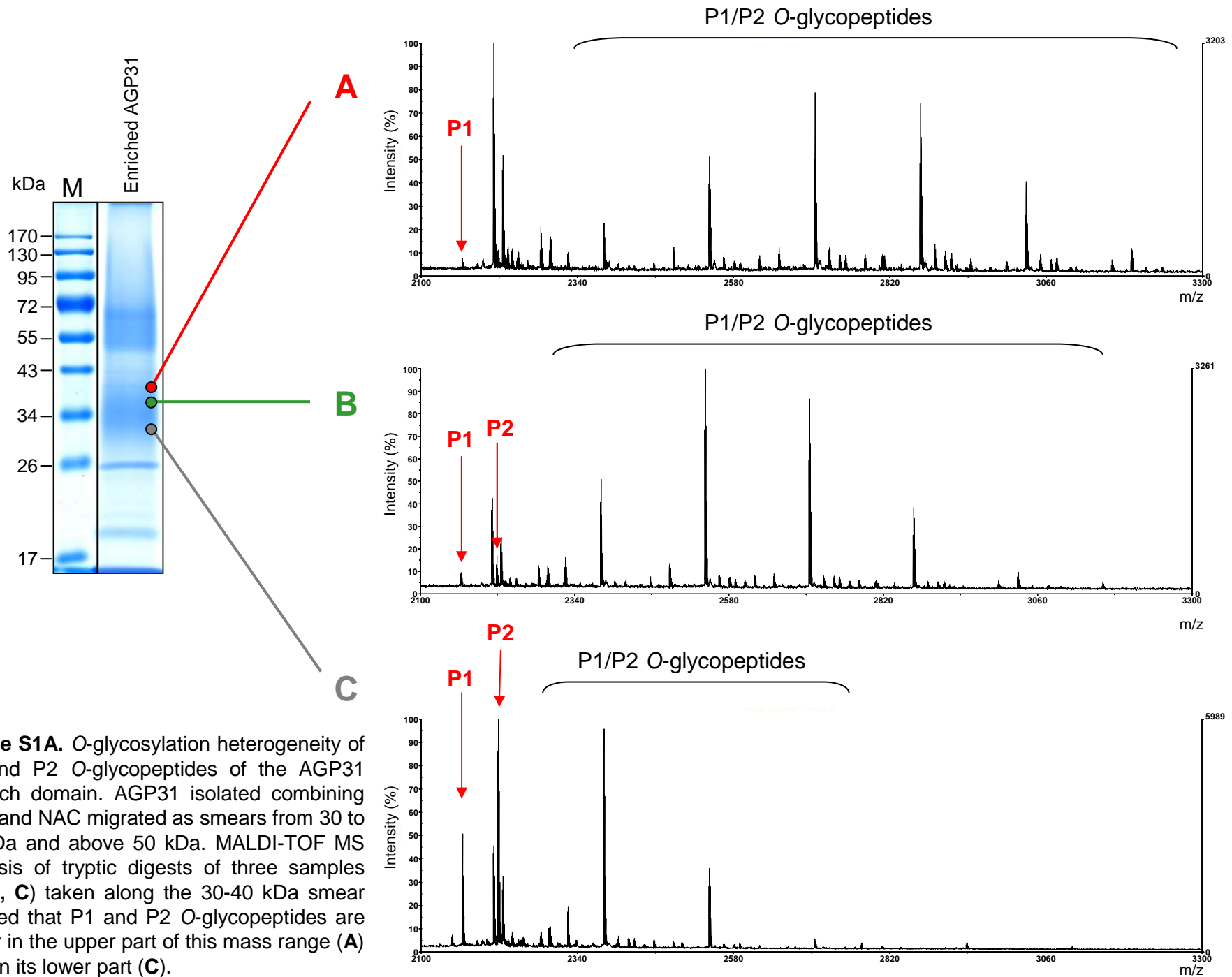


Figure S1A. O-glycosylation heterogeneity of P1 and P2 O-glycopeptides of the AGP31 Pro-rich domain. AGP31 isolated combining CEC and NAC migrated as smears from 30 to 40 kDa and above 50 kDa. MALDI-TOF MS analysis of tryptic digests of three samples (**A**, **B**, **C**) taken along the 30-40 kDa smear showed that P1 and P2 O-glycopeptides are larger in the upper part of this mass range (**A**) than in its lower part (**C**).

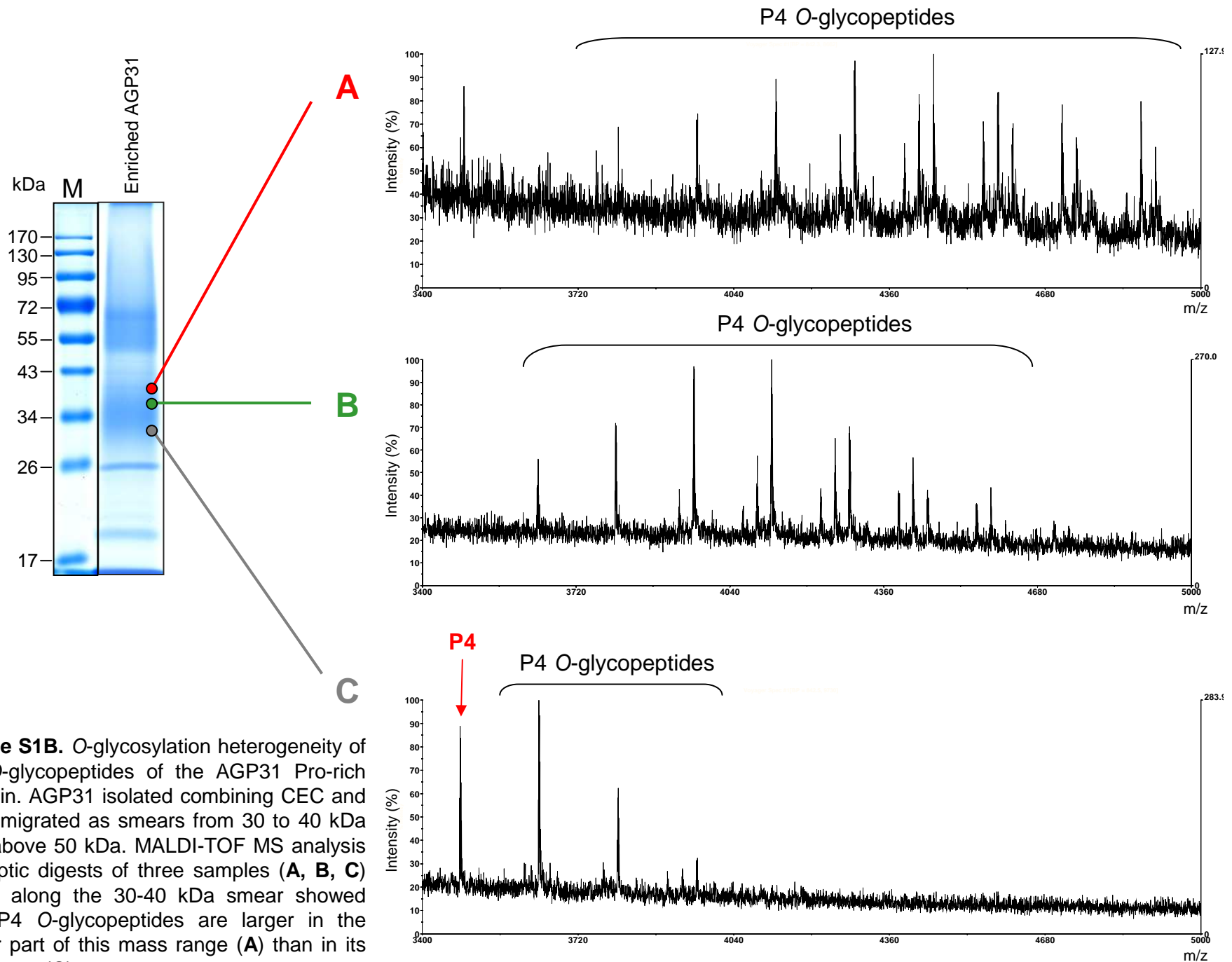


Figure S1B. O-glycosylation heterogeneity of P4 O-glycopeptides of the AGP31 Pro-rich domain. AGP31 isolated combining CEC and NAC migrated as smears from 30 to 40 kDa and above 50 kDa. MALDI-TOF MS analysis of tryptic digests of three samples (**A**, **B**, **C**) taken along the 30-40 kDa smear showed that P4 O-glycopeptides are larger in the upper part of this mass range (**A**) than in its lower part (**C**).