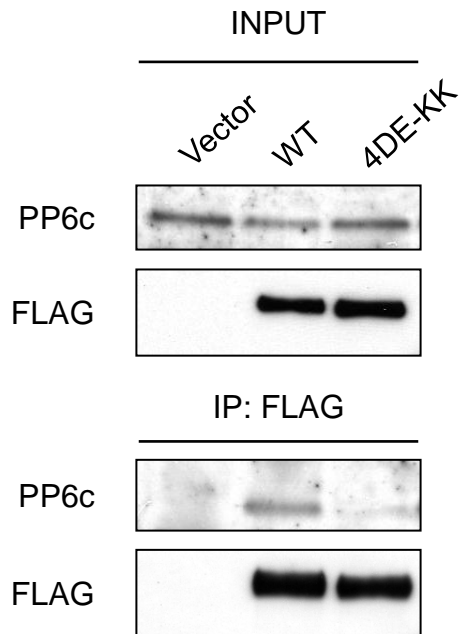
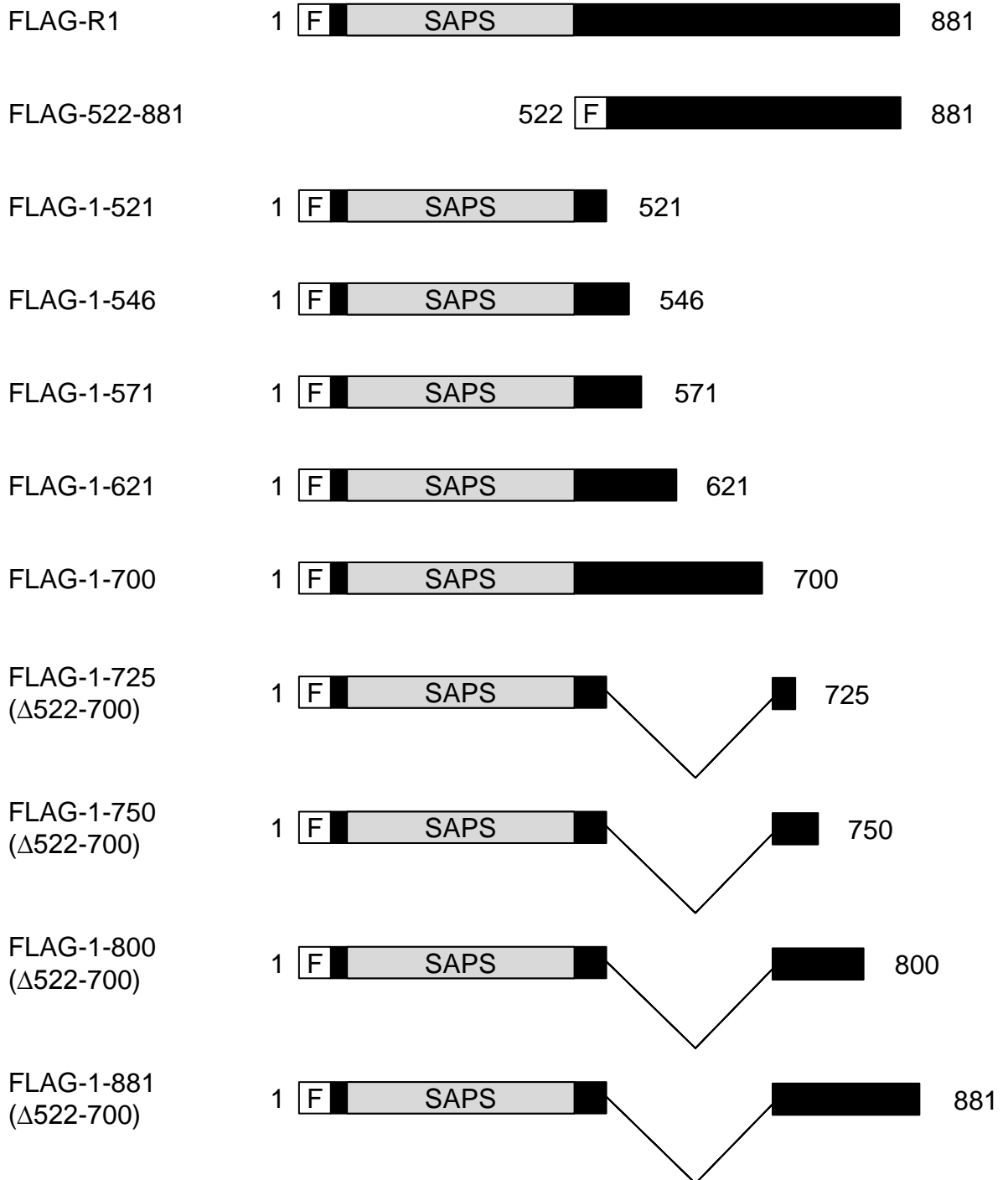


Suupplementary Figure S1



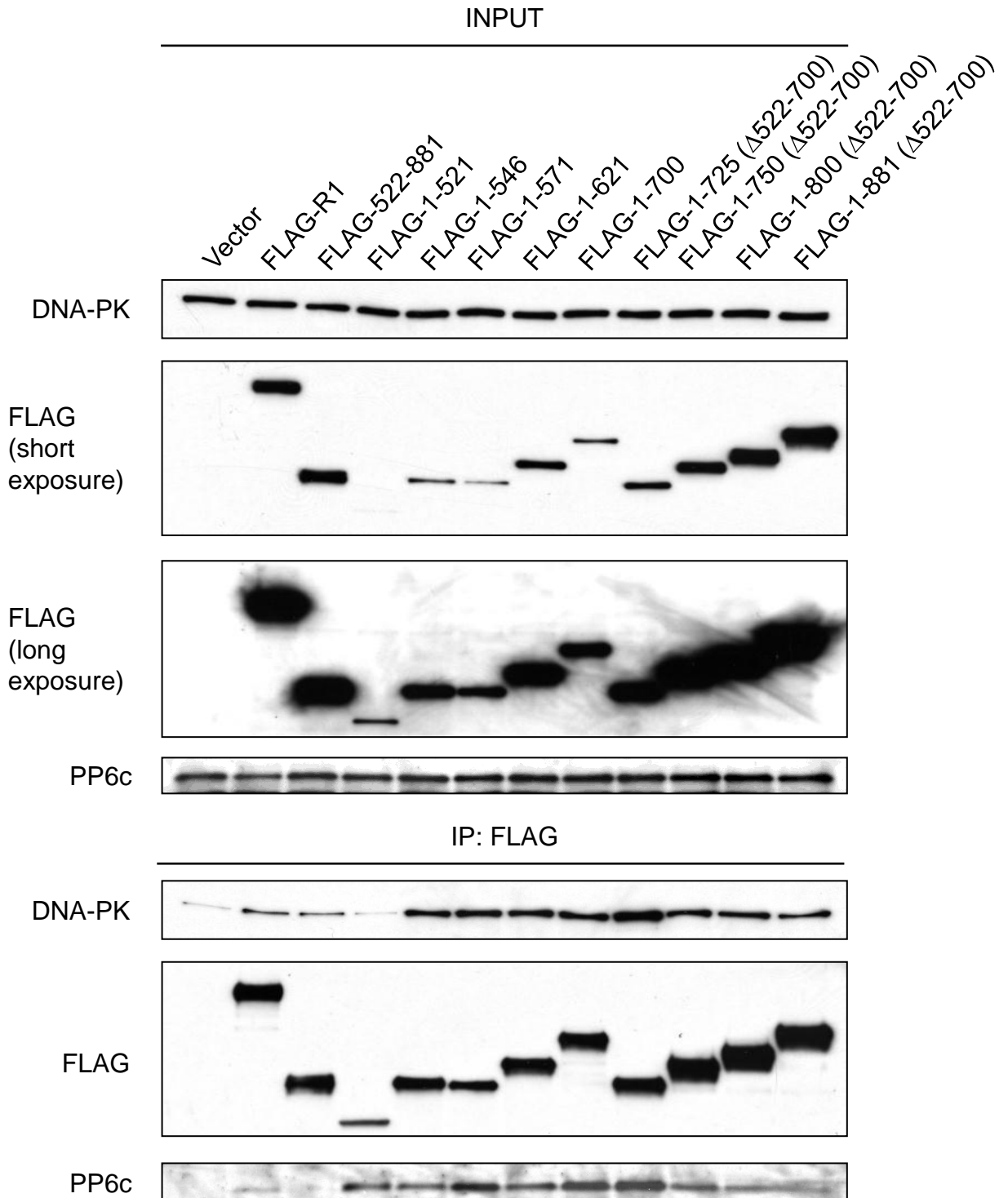
Supplementary figure S1. 293T cells were transfected with empty plasmid or plasmids encoding the indicated FLAG-tagged proteins. 48hrs post transfection FLAG-tagged proteins were immunoprecipitated from the lysates of these cells using anti-FLAG antibody. The levels of input proteins (top two panels) and immunoprecipitated proteins (bottom two panels) was determined by western blotting with the indicated antibodies.

Suupplementary Figure S2



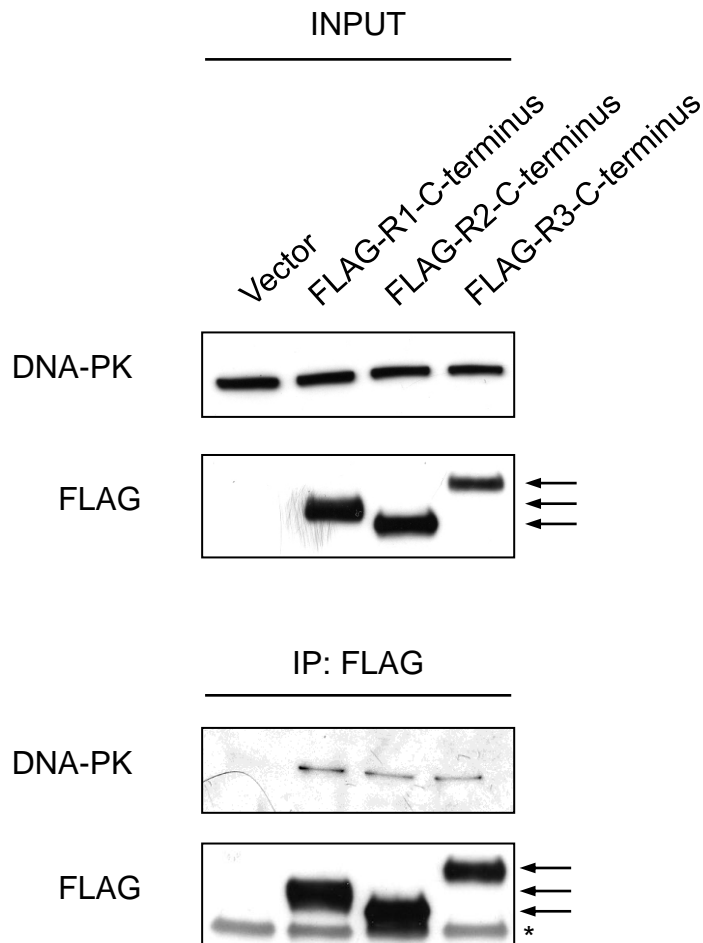
Supplementary figure S2. A schematic representation of the FLAG-tagged constructs of R1 used. “F” indicates the N-terminal FLAG tag.

Suupplementary Figure S3



Supplementary figure S3. 293T cells were transfected with empty plasmid or plasmids encoding the FLAG-tagged proteins described in (A). 48hrs post transfection FLAG-tagged proteins were immunoprecipitated from the lysates of these cells using anti-FLAG antibody. The levels of input proteins (top three panels) and immunoprecipitated proteins (bottom three panels) was determined by western blotting with the indicated antibodies.

Suupplementary Figure S4



Supplementary figure S4. 293T cells were transfected with empty plasmid or plasmids encoding the indicated FLAG-tagged proteins. 48hrs post transfection FLAG-tagged proteins were immunoprecipitated from the lysates of these cells using anti-FLAG antibody. The levels of input proteins (top two panels) and immunoprecipitated proteins (bottom two panels) was determined by western blotting with the indicated antibodies. Arrows indicate the position of FLAG-tagged proteins. The asterisk indicates the migration of antibody heavy chain.