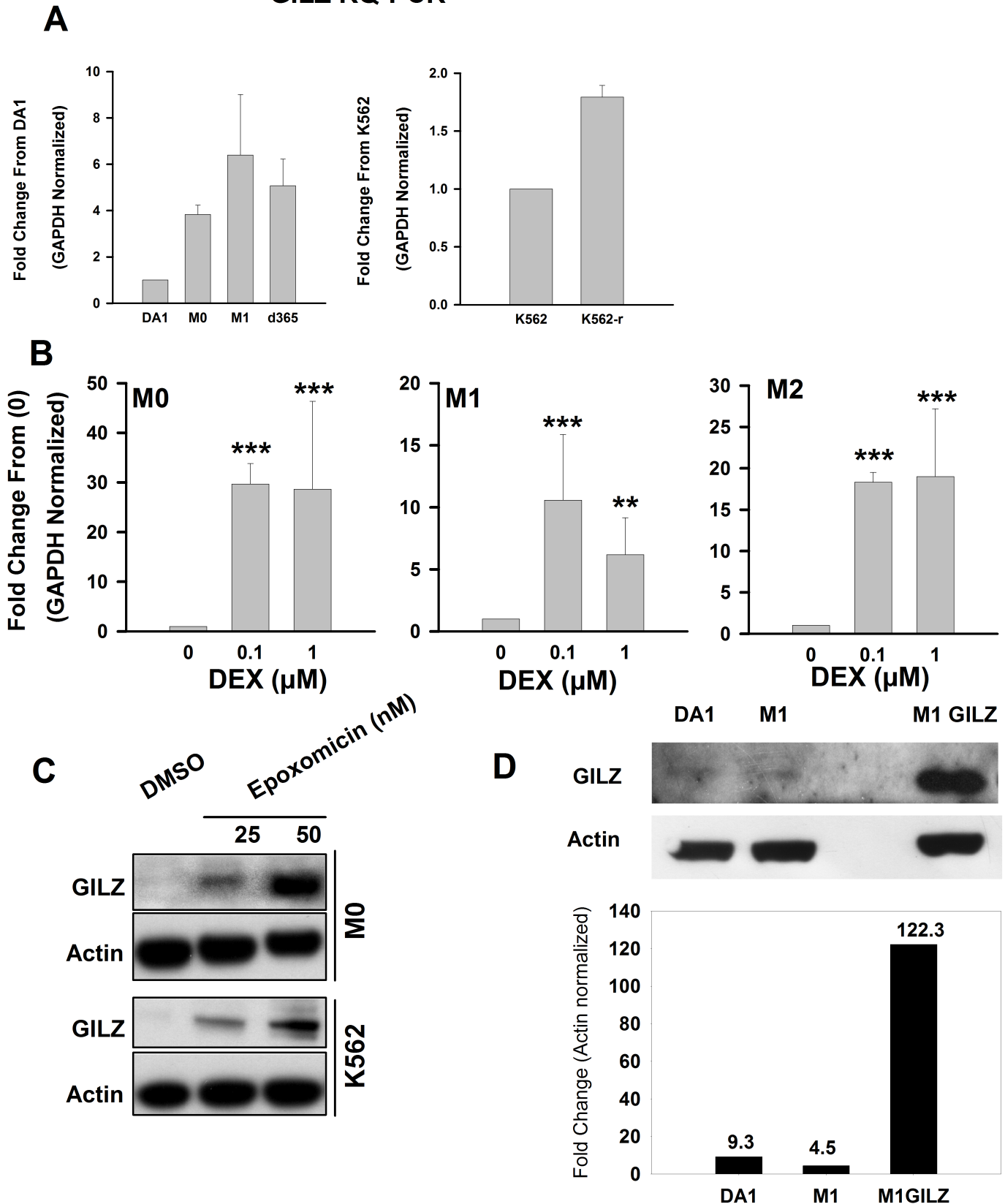


Supplementary Figure S1

GILZ RQ-PCR



Supplementary Figure S1: (A) RQ-PCR analysis of the GILZ transcript in parental BCR-ABL-negative DA1 cells and in BCR-ABL-transformed DA1-3b cells (non-mutated M0, mutated M1 and dormant d365), as well as in imatinib-sensitive and resistant human K562 cells (** $p < 0.01$, * $p < 0.05$, Kruskal-Wallis test). Error bars represent the mean \pm s.d. of three independent experiments performed in duplicate. (B) As in (A), M0, M1 and M2 cells were exposed for 24 h to dexamethasone at the indicated concentrations (** $p < 0.01$, *** $p < 0.001$, Kruskal-Wallis test). Error bars represent the mean \pm s.d. of three independent experiments performed in duplicate. (C) Western blot analysis of GILZ in M0 and K562 cells exposed for 24 h to epoxomicin at the indicated concentrations. Actin is shown as a loading control. (D) Western blot analysis of GILZ in DA1, M1, and M1 cells stably transfected with GILZ. Lower panel shows signal ratio between GILZ and actin.