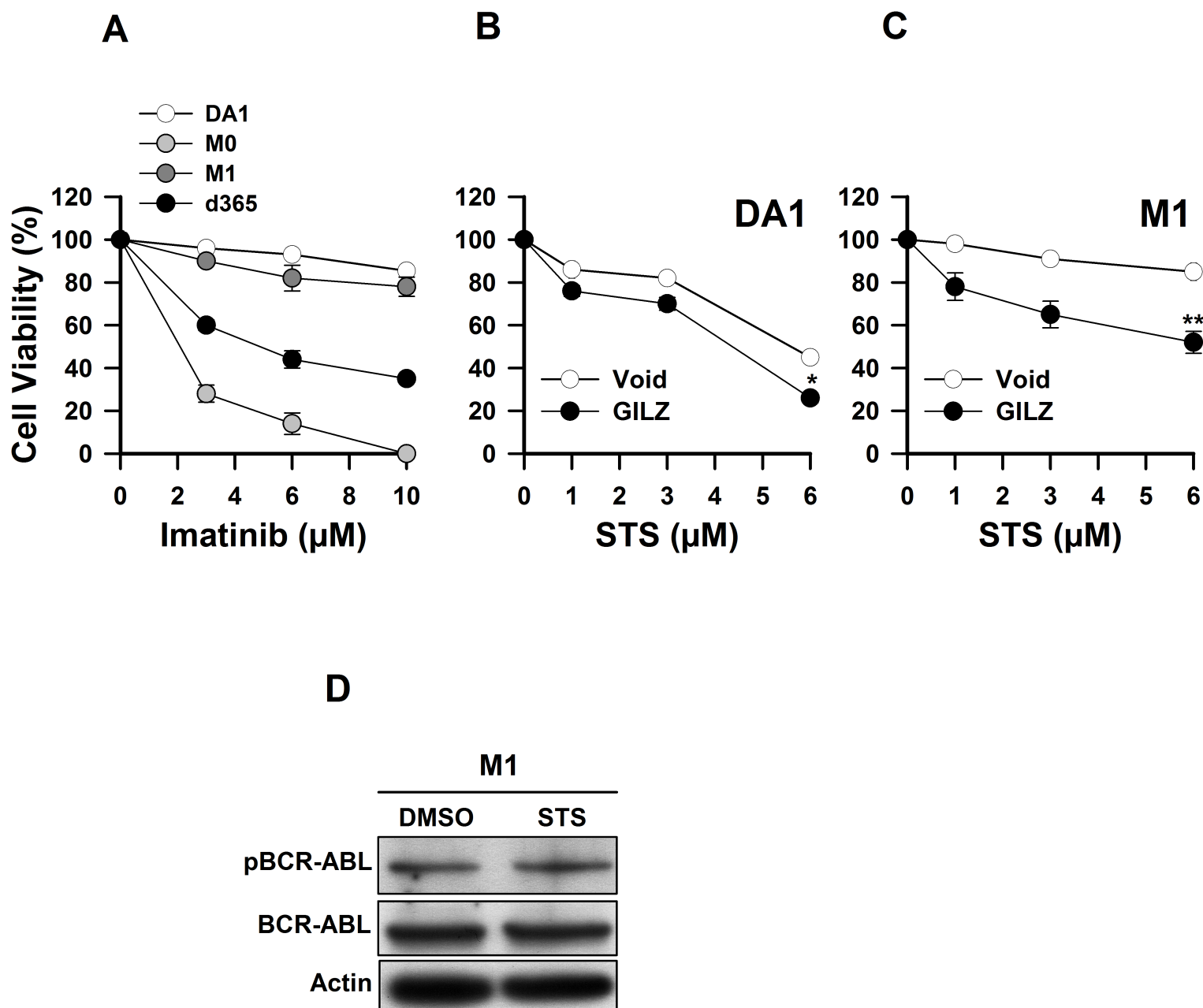


Supplementary Figure S2



Supplementary Figure S2: (A) Cell viability measured by CMXRos retention in the BCR-ABL negative parental DA1 cells and in several BCR-ABL-transformed DA1-3b cell lines (non-mutated M0, mutated M1 and dormant d365) after a 24-h exposure to Imatinib. **(B)** Viability of DA1 cells (Void and GILZ) exposed for 24 h to staurosporine (STS) (* $p < 0.05$, Kruskal-Wallis test). **(C)** Viability of M1 cells (Void and GILZ) exposed for 24 h to staurosporine (** $p < 0.01$, Kruskal-Wallis test). Error bars represent the means \pm s.d. of three separate experiments performed in triplicate. **(D)** Western blot analysis of BCR-ABL phosphorylation in M1 cells exposed for 24 h to 6 μ M staurosporine (STS). Unphosphorylated BCR-ABL and actin are shown as loading controls.