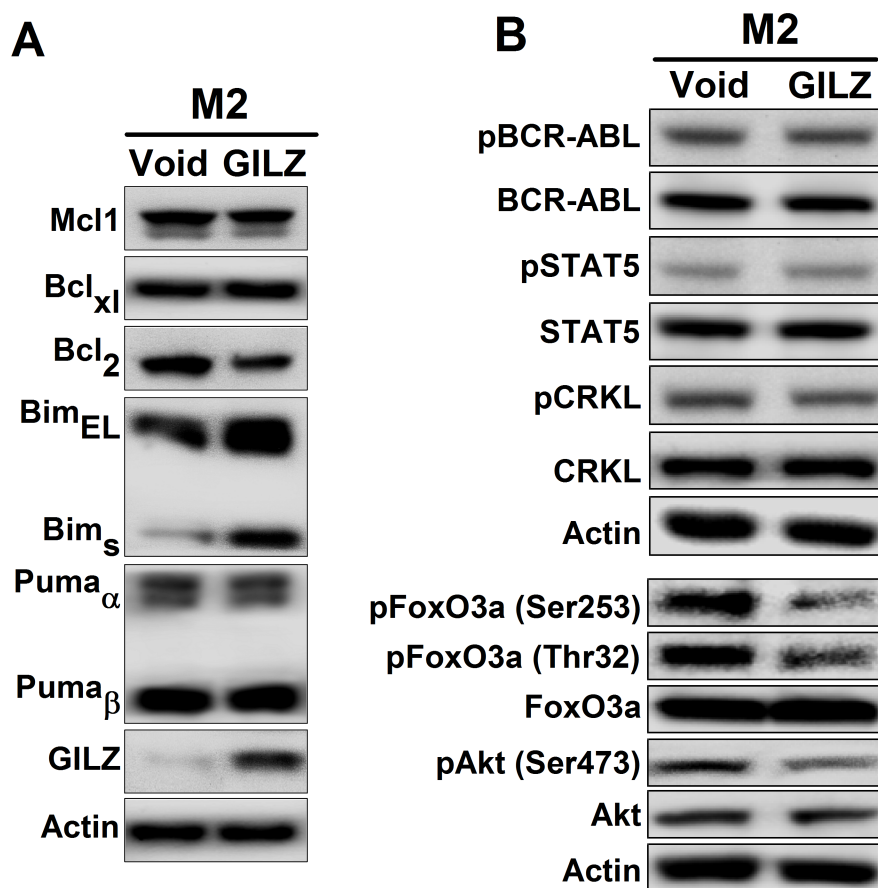


Supplementary Figure S5



Supplementary Figure S5: GILZ restores imatinib sensitivity in dasatinib-resistant M2 cells.

(A) WB analysis of the Bcl-2 family members in M2-GILZ and M2-Void cells. **(B)** The phosphorylation states of BCR-ABL, CRKL, STAT5, FoxO3a and AKT (Ser473) were analyzed as in **(B)**.