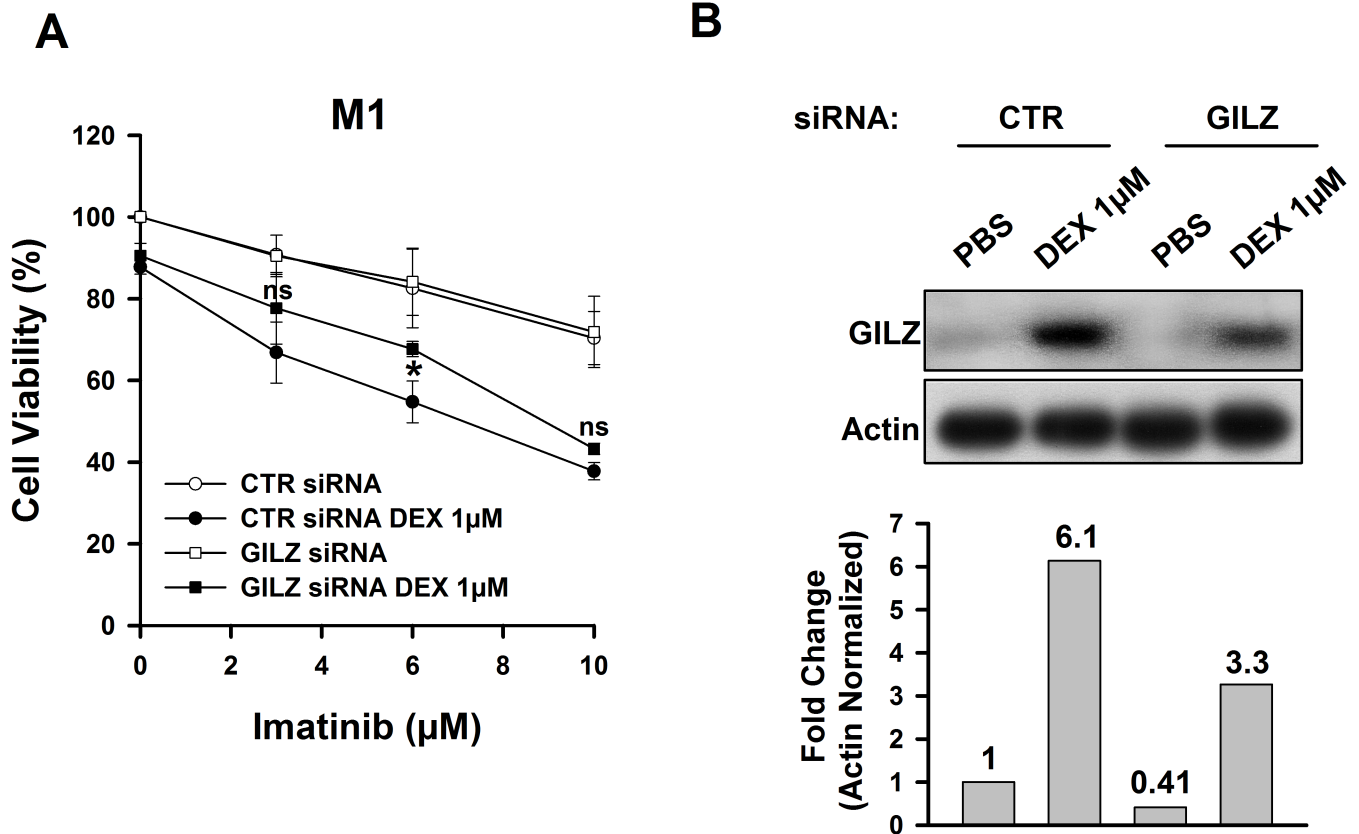


Supplementary Figure S6



Supplementary Figure S6: (A) GILZ or scrambled (CTR) siRNA was transfected into M1 cells. After 6 h of recovery, the transfected cells were incubated with 1 µM dexamethasone for 24 h and then exposed to imatinib for 24 h. Cell viability was measured using the MTS assay (* $p < 0.05$, Kruskal-Wallis test). Error bars represent the means \pm s.d. of three separate experiments performed in triplicate. **(B)** Western blot analysis of GILZ in siRNA-transfected M1 cells that had been exposed for 24 h to 1 µM dexamethasone. Actin is shown as a loading control. One representative of three experiments is shown. The numbers below refer to the fold-change of GILZ expression normalized to actin, with reference to non-treated scrambled siRNA-transfected M1 cells.