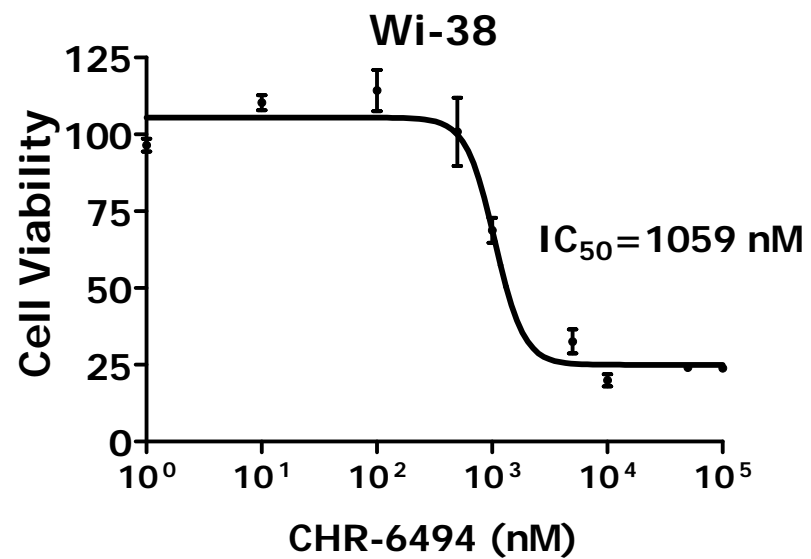


Supplemental Material

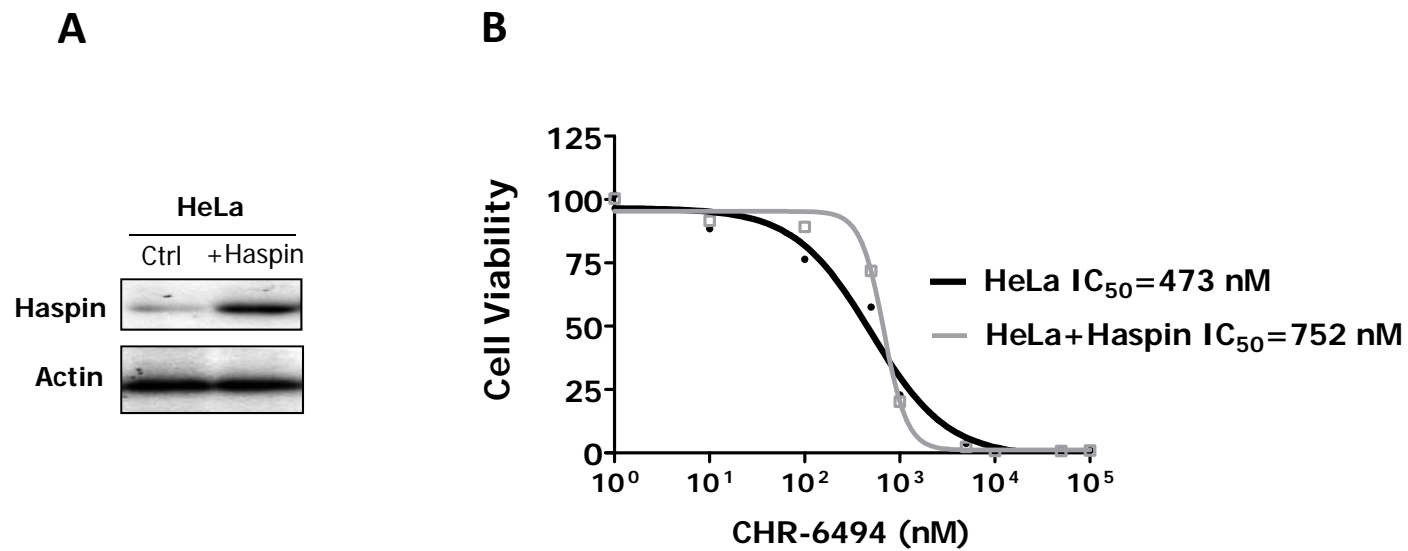
Supplementary Table 1. Analysis of the enzymatic inhibitory capacity of CHR-6494 in a panel of twenty-seven protein kinases using a Fluorescence Resonance Energy Transfer (FRET)-assay based on the differential sensitivity of phosphorylated and non-phosphorylated peptides to protein cleavage (Z'-LYTE Kinase Assay, Invitrogen).

Kinase	% inhibition at 0.1 μ M
DAPK1	0
MAPK1 (ERK2)	0
MAPK14 (p38 α)	0
PLK1	0
TEK (Tie2)	0
EPHB4	1
DAPK3 (ZIPK)	3
IKBKB (IKK β)	3
AURKB (Aurora B)	4
MAP2K1 (MEK1)	5
CHEK2 (CHK2)	8
SYK	9
MAPK9 (JNK2)	10
MAPK8 (JNK1)	12
MET (cMet)	2
CHEK1 (CHK1)	14
ALK	15
FLT1 (VEGFR1)	17
KDR (VEGFR2)	18
LCK	18
PDGFRB (PDGFR β)	27
SRC	31
CDK2/cyclin A	33
CDK1/cyclin B	34
PIM1	36
GSK3B (GSK3 β)	48
NTRK1 (TRKA)	58



Supplementary Figure 1.

Effect of CHR-6494 in cell viability determined by the XTT assay in Wi-38 cells.



Supplementary Figure 2.

Haspin overexpression in HeLa cells increases the IC_{50} value upon CHR-6494 use. A, western-blot of Haspin upon transfection. B, Effect of Haspin overexpression in cell viability determined by the XTT assay.