

Figure S1

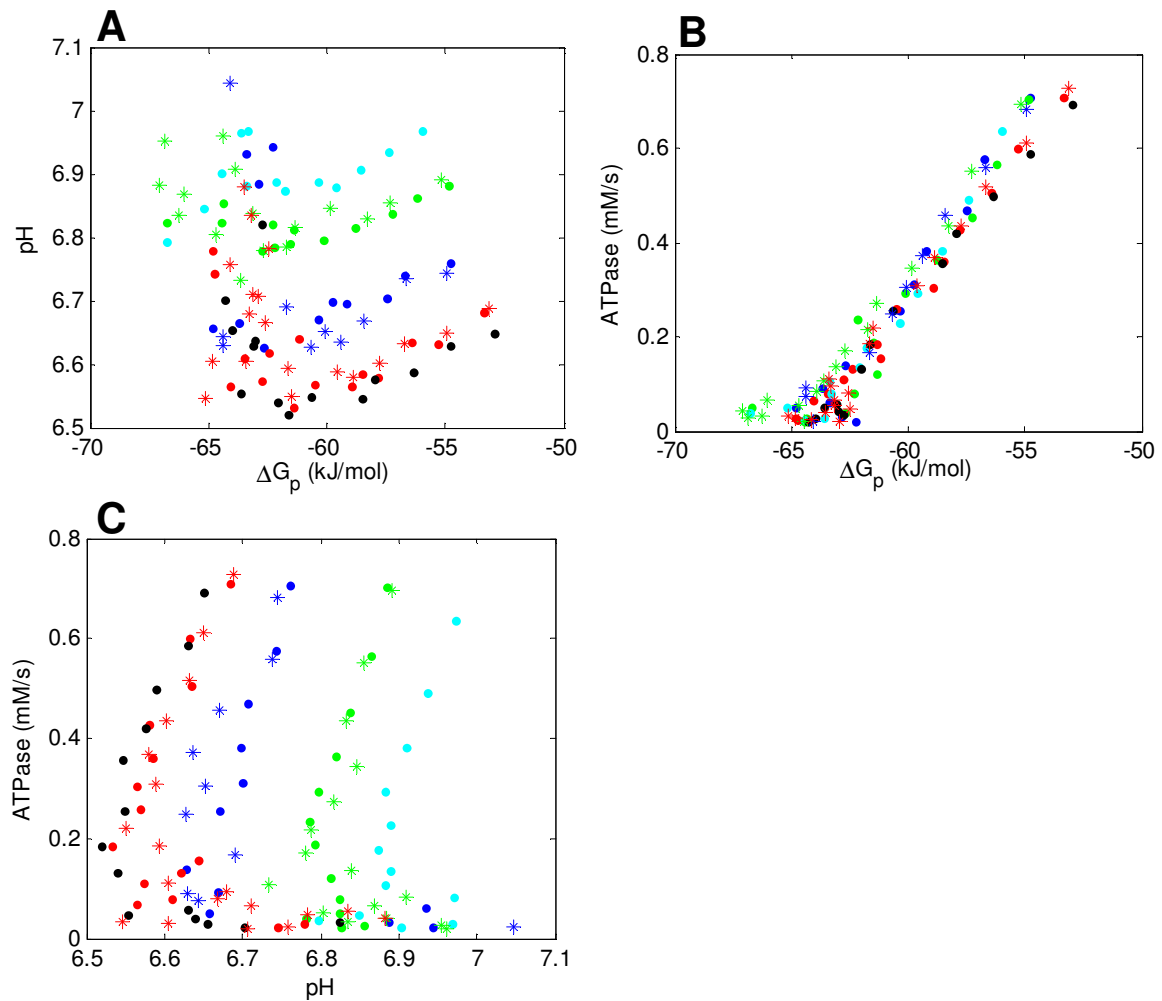


Figure 1, effect of variation in end – exercise pH on observed $\Delta G_p - J_p$ relation. The $\Delta G_p - \text{pH}$ (A), $\Delta G_p - J_p$ (B) and $\text{pH} - J_p$ (C) of different individual datasets are shown. Each dataset is indicated by specific color – marker combination. These results show that between datasets a large variation in cellular pH values was observed (panel A and C) while the $\Delta G_p - J_p$ relation (B) determined for each dataset was very similar. From these results it was concluded that the $\Delta G_p - J_p$ relation was insensitive to cellular pH.