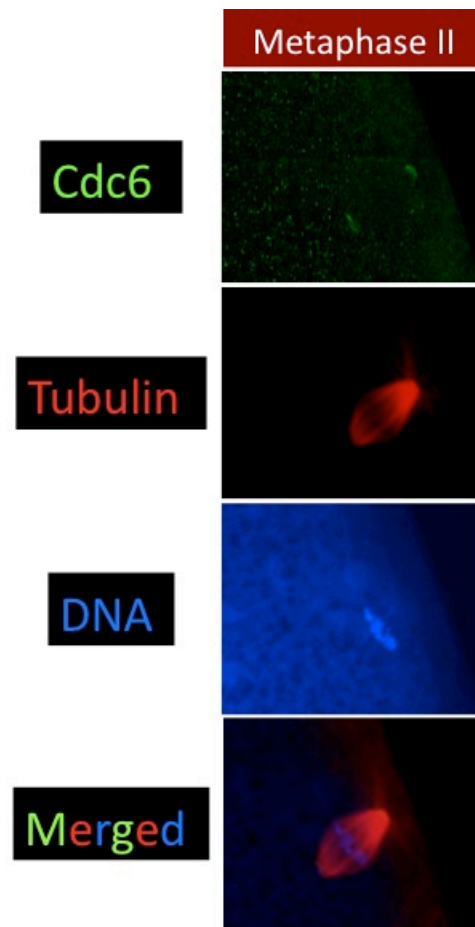
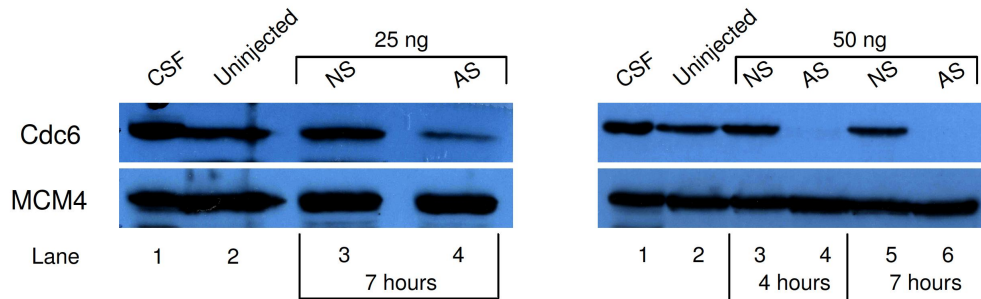


Supplemental Figure 1



Localization of Cdc6 to spindle poles in metaphase II arrested oocytes. Cdc6 is localized to a focus at the spindle pole that attaches to the animal cortex in metaphase II arrested oocytes similar to metaphase I spindle.

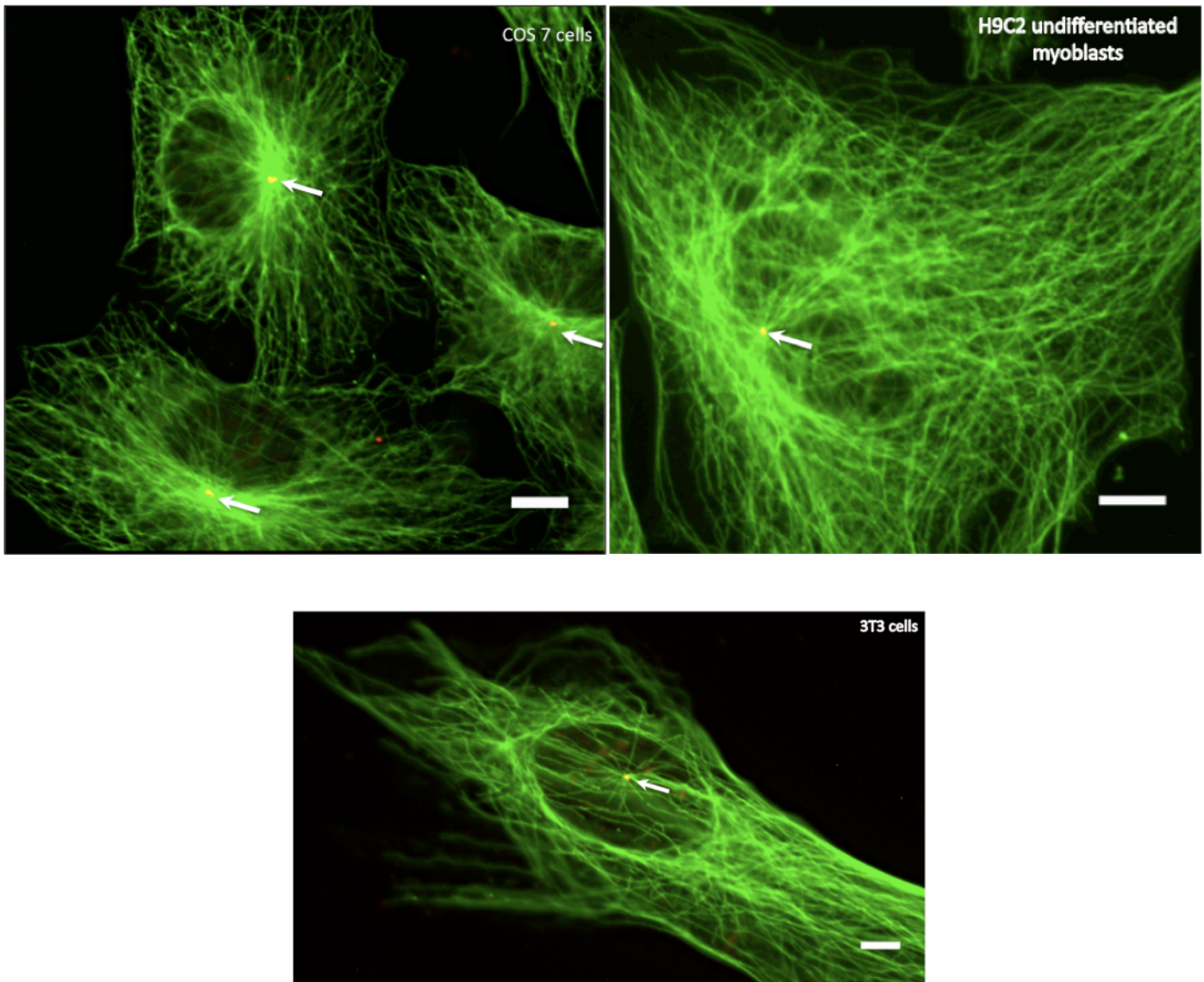
Supplemental Figure 2



Cdc6 antisense oligonucleotides inhibit Cdc6 protein expression during maturation.

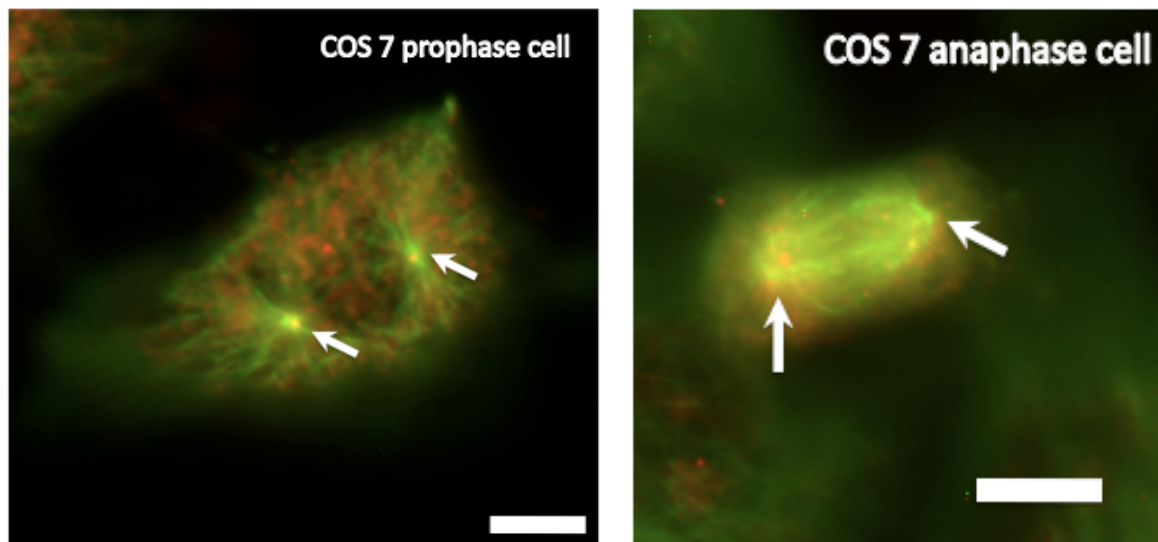
Stage VI oocytes were injected with Cdc6 antisense (AS) oligonucleotides (25ng or 50 ng) or non-specific (NS) oligonucleotides at similar concentration as control. Samples were incubated for 4 and 7 hours after injection and stimulated with progesterone to induce meiotic maturation. Samples were collected at 240 minutes after GVBD, total protein was extracted and separated by SDS-PAGE and transferred onto the nitrocellulose membrane. Cdc6 protein expression was tested by Western analysis. MCM4 was probed as a loading control and Cytostatic factor (CSF) extract was a positive control.

Supplemental Figure 3



Centrosome localization of Cdc6 protein in various mammalian cell lines. Interphase cells were dual stained with α -tubulin (green) and Cdc6 (red) antibodies as described in the materials and methods section. White arrow indicates the centrosomes. Scale bar is 5 microns.

Supplemental Figure 4



Cdc6 localizes to spindle poles in COS 7 cells during mitosis. COS 7 prophase cells were stained with γ -tubulin (green) and Cdc6 (red) antibodies to show the localization of Cdc6 to spindle poles. COS 7 anaphase cells were stained with α -tubulin (green) and Cdc6 (red) as detailed in materials and methods section. White arrow indicates the spindle poles. Scale bar is 5 microns.