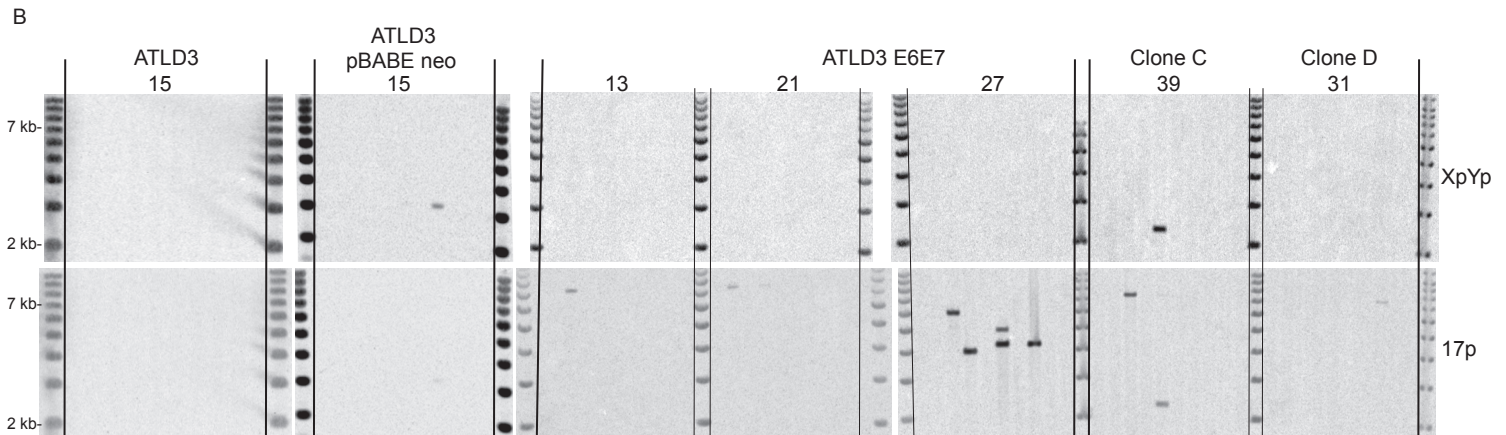
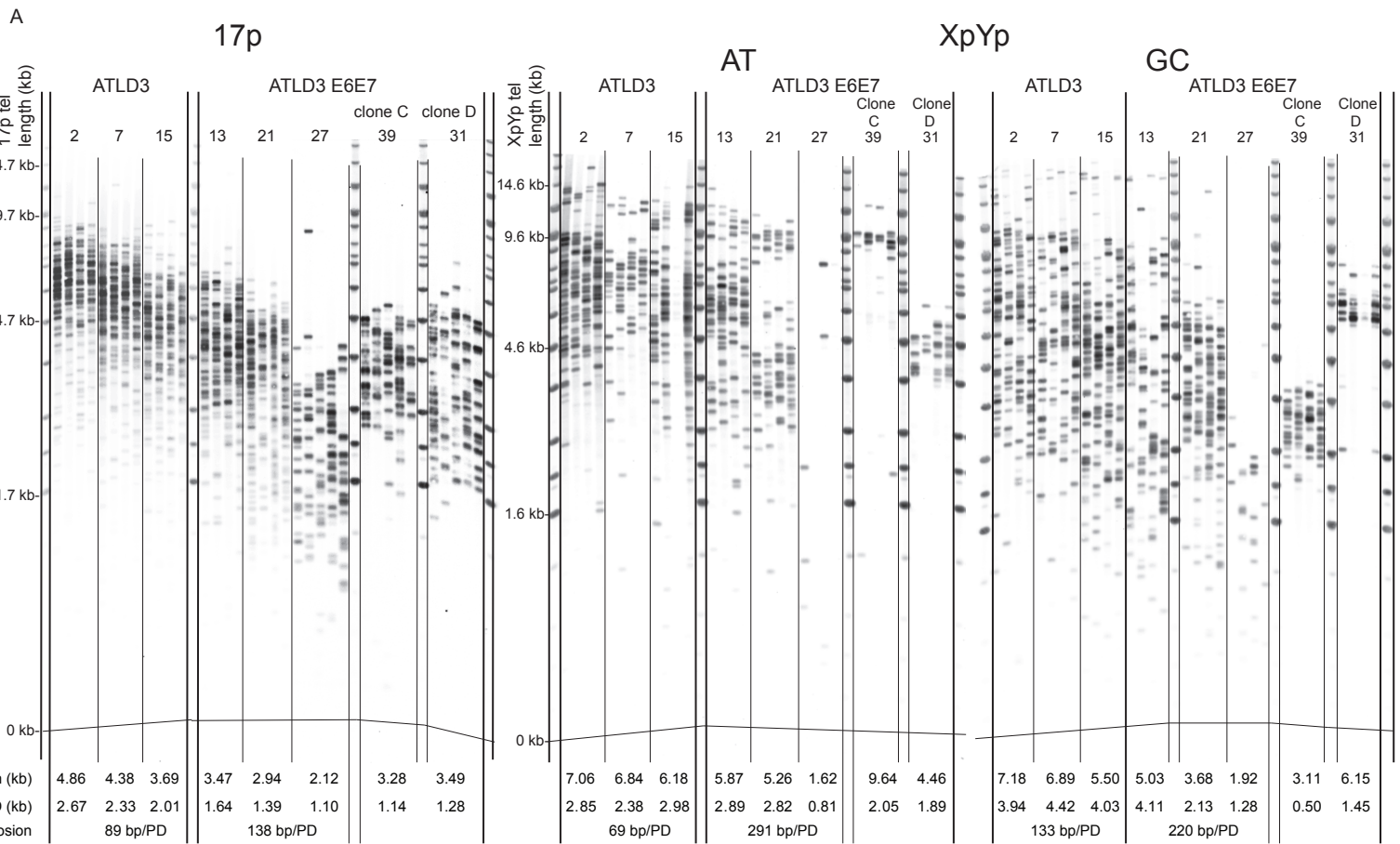


Supplementary figure 1. Cell growth of ATLD 3 and 4 cell as indicated on each plot. Population doublings are plotted as a function of time in days.



Supplementary figure 2. Telomere dynamics and fusion in ATLD3 cells. A. 17p STELA and XpYp allele specific STELA (GC and AT alleles); the population doubling (PD) point of the culture is indicated above each gel. Mean telomere length, standard deviation and rate of telomere erosion as a function of PD is indicated below the gel. B. Telomere fusion analysis, single molecule fusion events are detected by southern hybridisation with the XpYp and 17p telomere-adjacent probes as indicated on the right. The PD points of the cultures are indicated above.