

Figure S1: Publication year 1980.

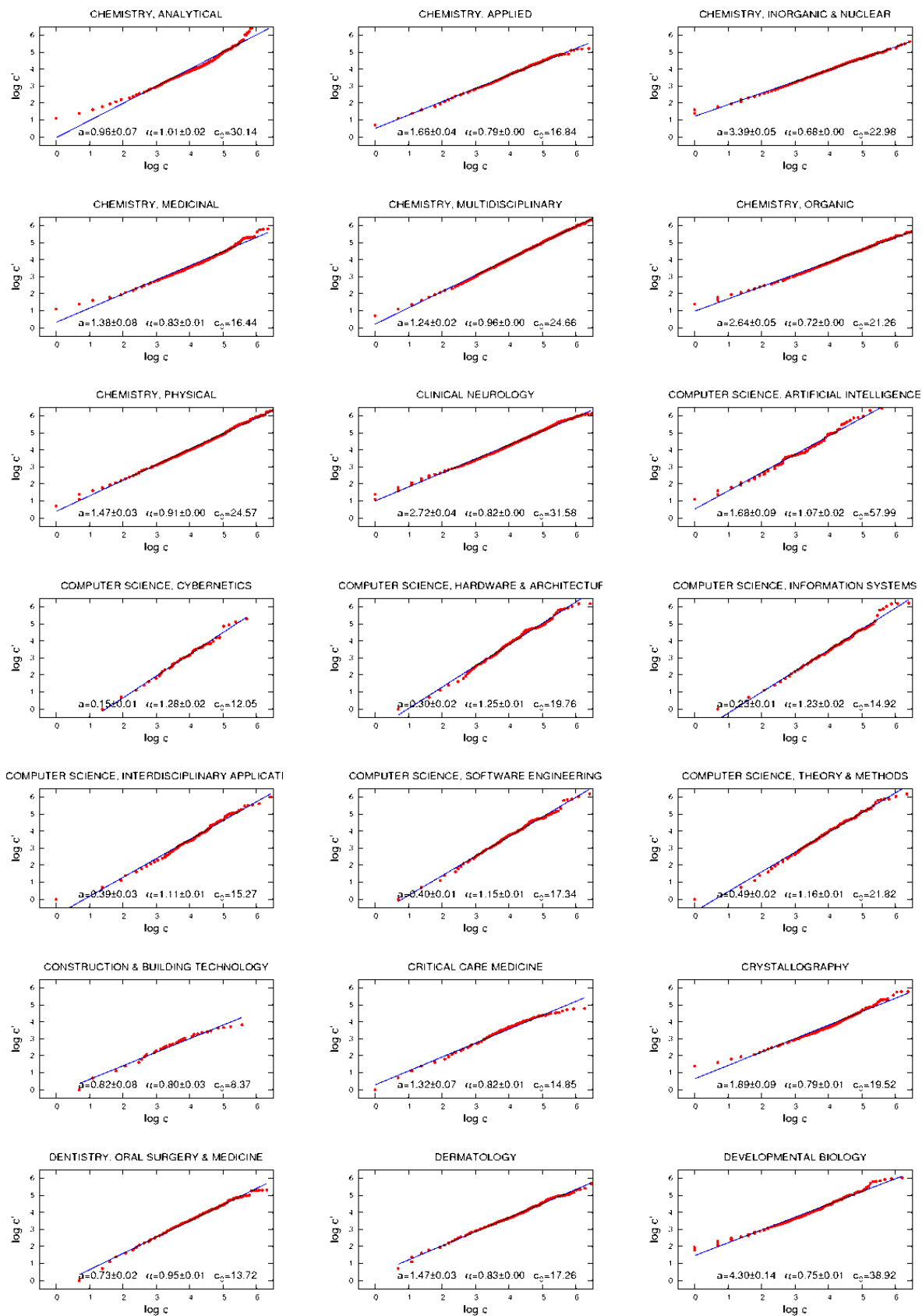


Figure S2: Publication year 1980.

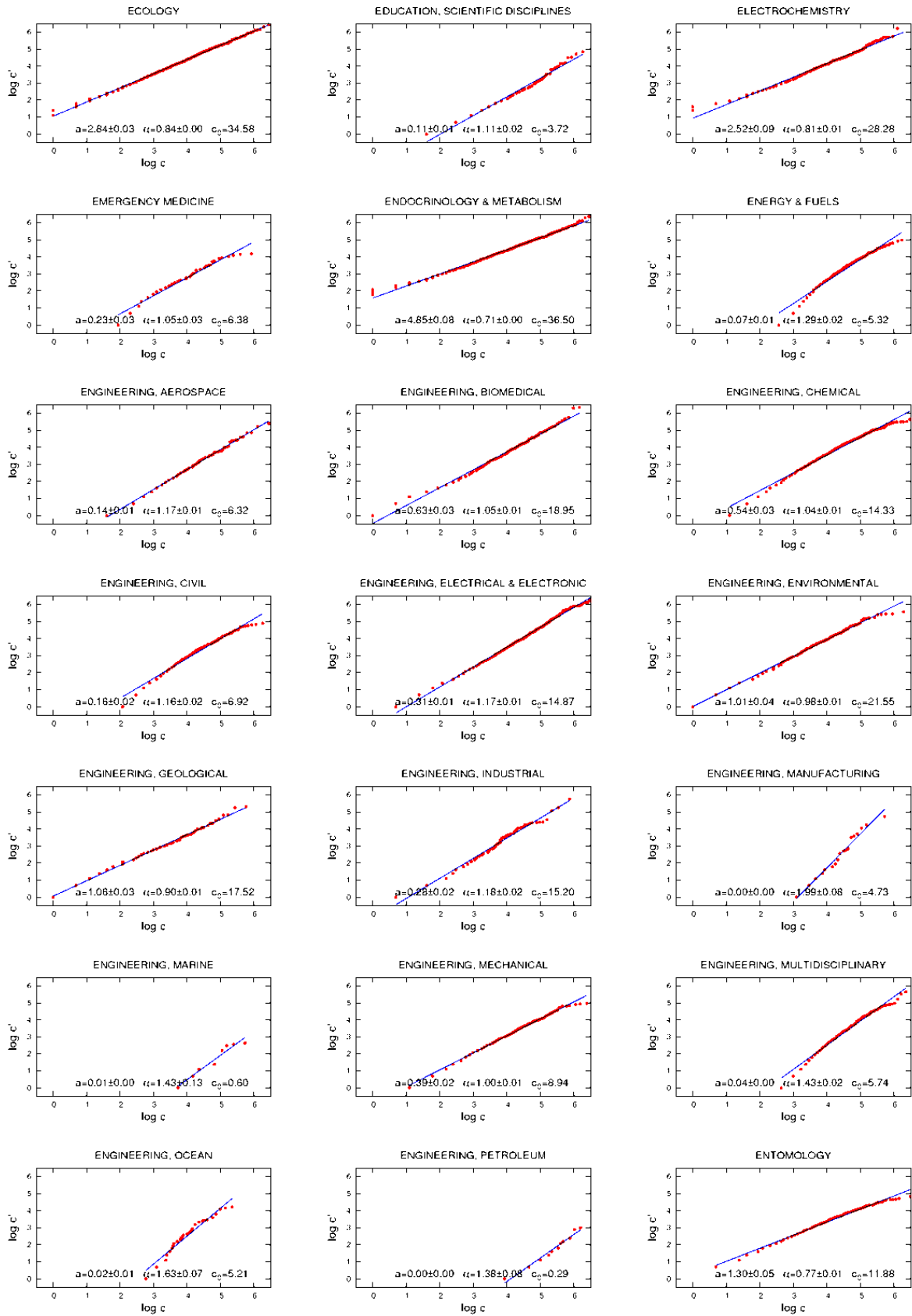


Figure S3: Publication year 1980.

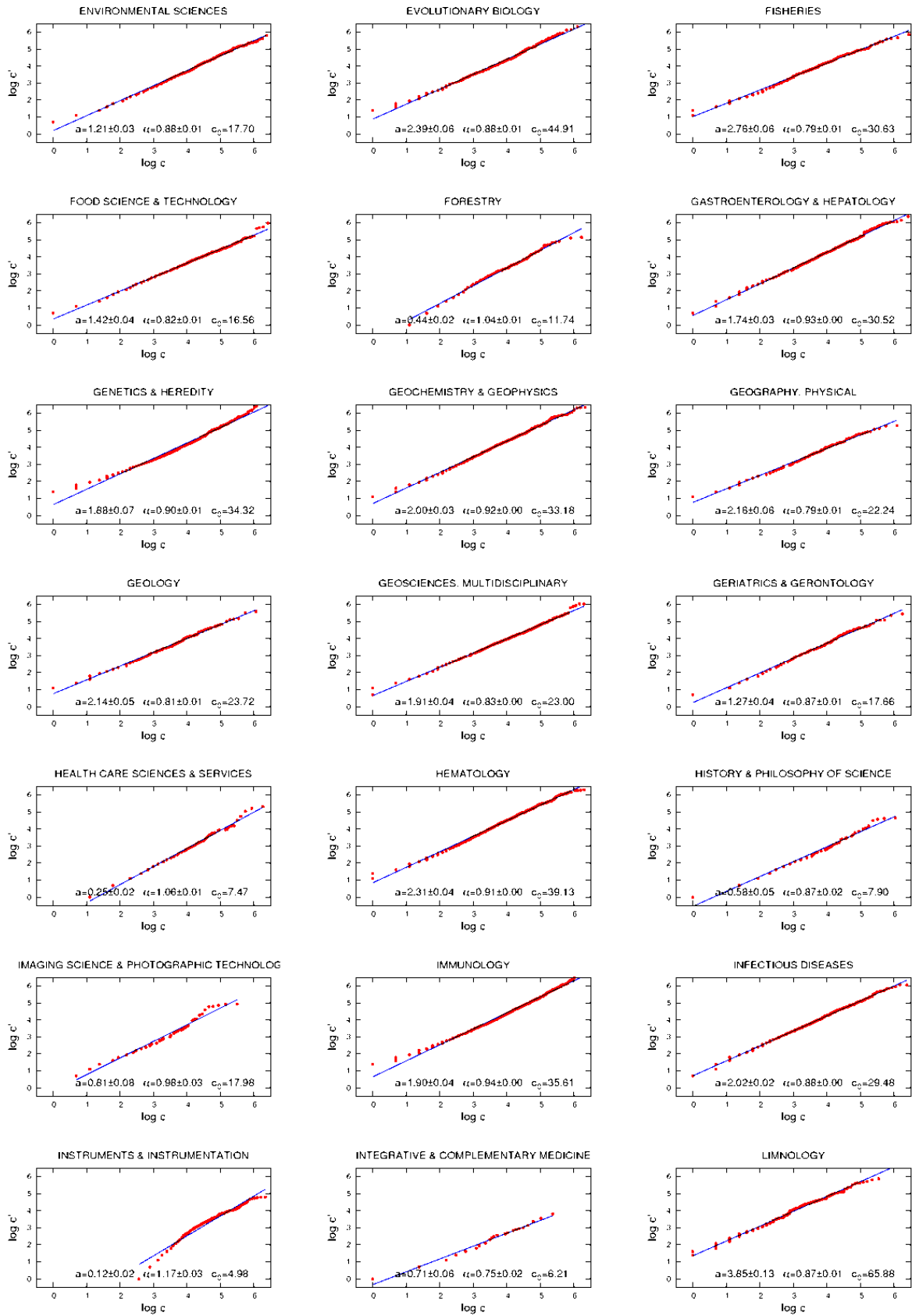


Figure S4: Publication year 1980.

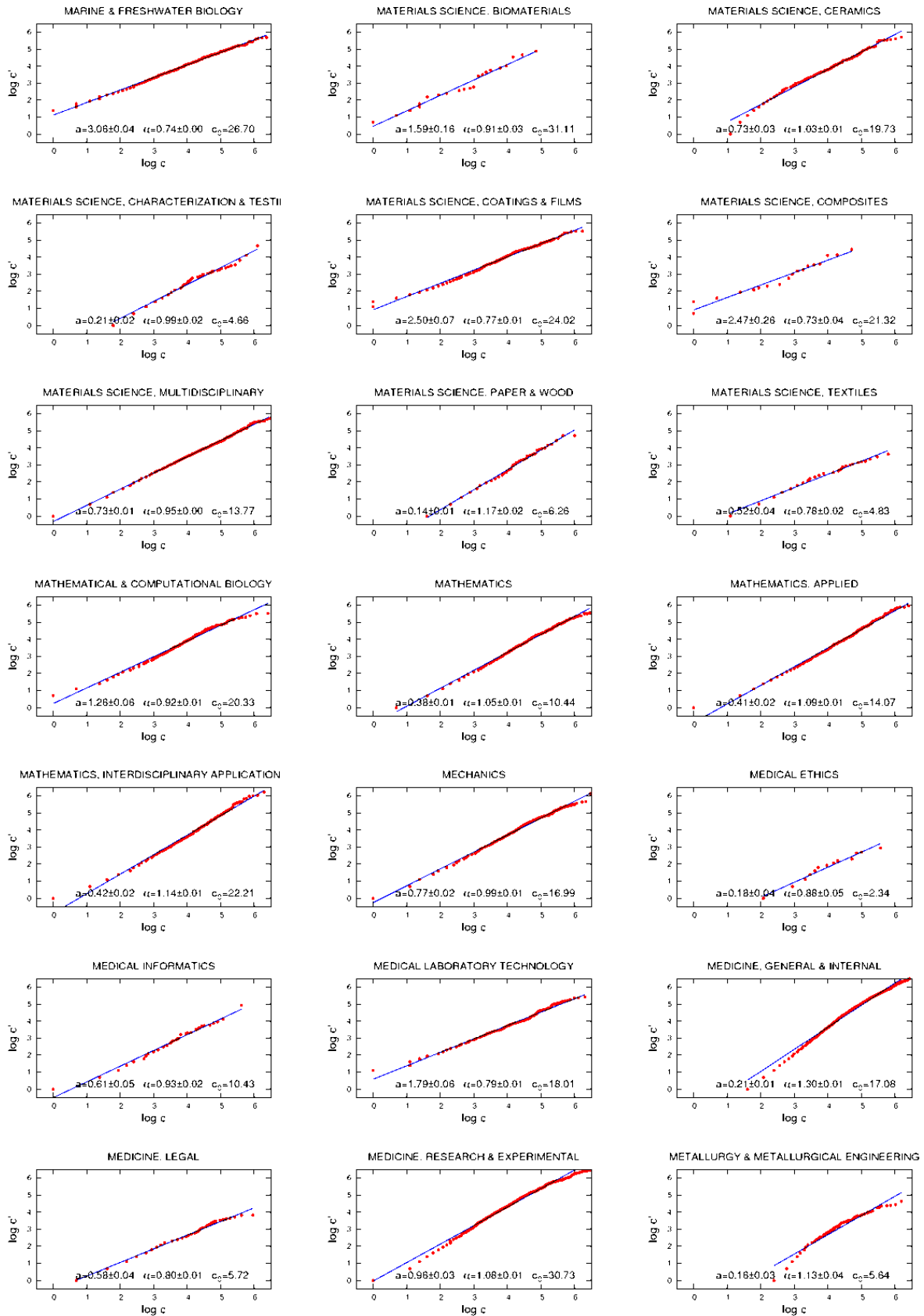


Figure S5: Publication year 1980.

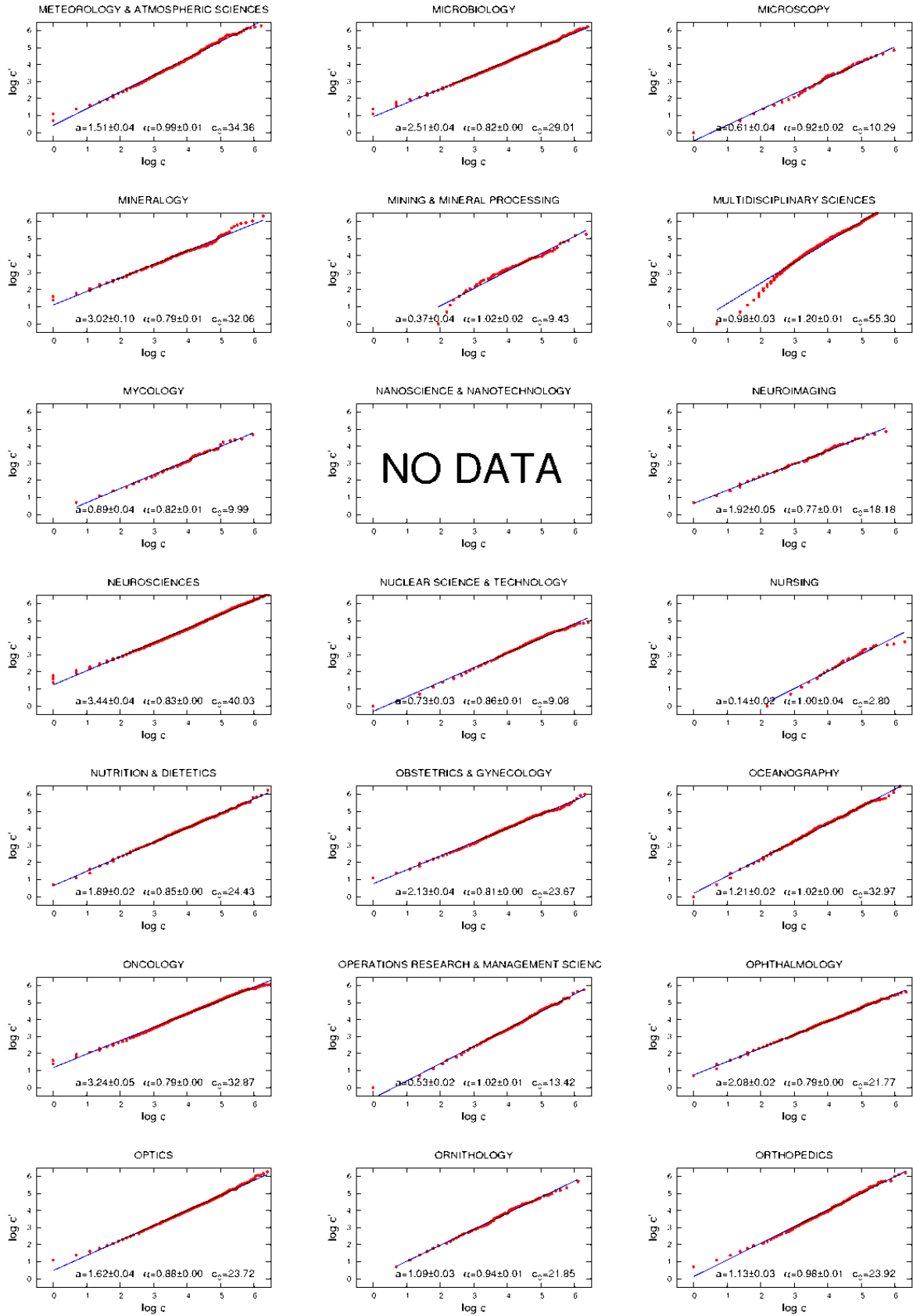


Figure S6: Publication year 1980.

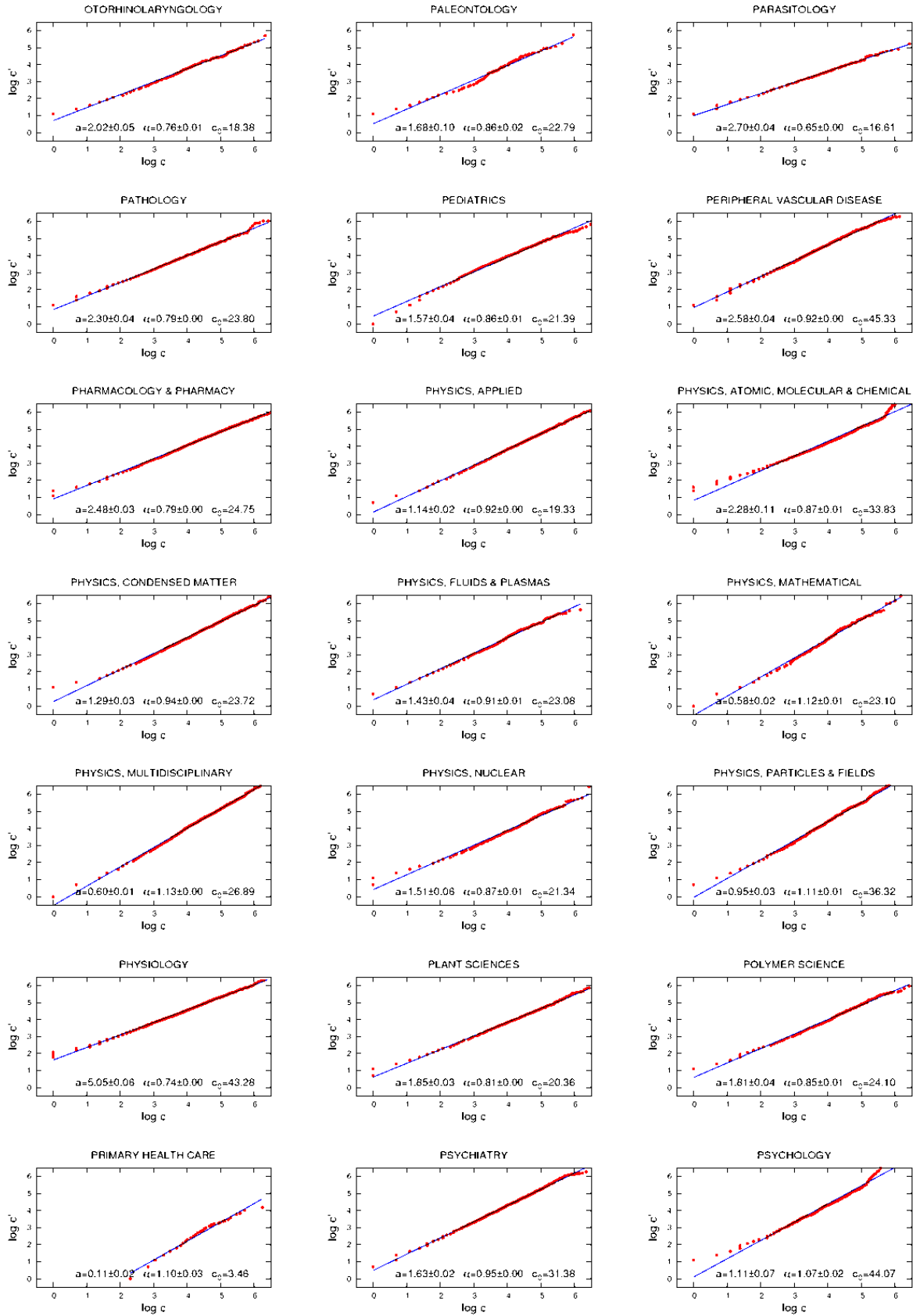


Figure S7: Publication year 1980.

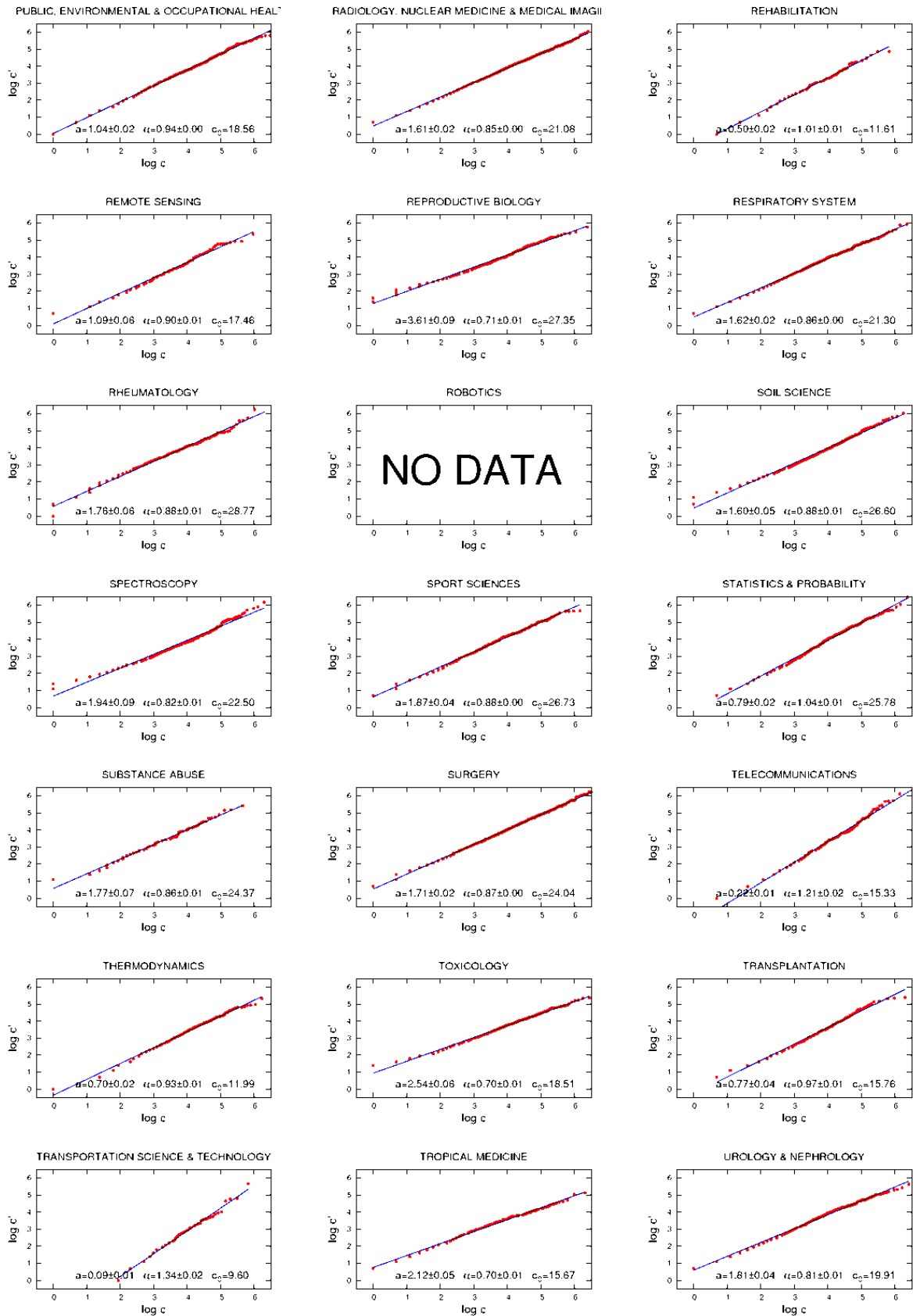


Figure S8: Publication year 1980.



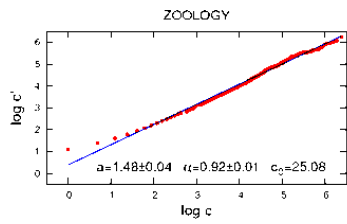
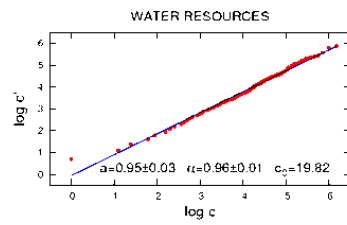
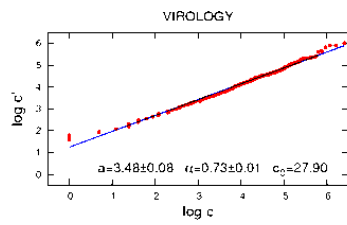
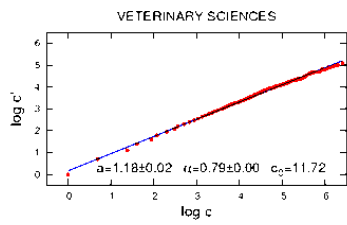


Figure S9: Publication year 1980.

Subject-category	$a$	$\alpha$	$\langle c \rangle$	$N$
ACOUSTICS	$0.63 \pm 0.02$	$1.05 \pm 0.01$	17.61	1,232
AGRICULTURAL ECONOMICS & POLICY	$0.30 \pm 0.04$	$1.00 \pm 0.03$	6.96	444
AGRICULTURE, DAIRY & ANIMAL SCIENCE	$0.98 \pm 0.02$	$0.89 \pm 0.00$	14.68	1,763
AGRICULTURE, MULTIDISCIPLINARY	$0.69 \pm 0.02$	$0.93 \pm 0.01$	12.52	1,518
AGRONOMY	$1.22 \pm 0.03$	$0.81 \pm 0.01$	13.33	1,858
ALLERGY	$1.87 \pm 0.05$	$0.82 \pm 0.01$	20.99	461
ANATOMY & MORPHOLOGY	$3.55 \pm 0.14$	$0.64 \pm 0.01$	20.98	305
ANDROLOGY	$1.81 \pm 0.05$	$0.69 \pm 0.01$	12.79	161
ANESTHESIOLOGY	$1.09 \pm 0.04$	$0.92 \pm 0.01$	18.52	1,375
ASTRONOMY & ASTROPHYSICS	$2.01 \pm 0.05$	$0.93 \pm 0.01$	35.73	4,146
AUTOMATION & CONTROL SYSTEMS	$0.19 \pm 0.01$	$1.24 \pm 0.01$	12.07	1,082
BEHAVIORAL SCIENCES	$1.63 \pm 0.03$	$0.89 \pm 0.00$	24.87	1,908
BIOCHEMICAL RESEARCH METHODS	$0.92 \pm 0.09$	$1.11 \pm 0.02$	47.38	1,589
BIOCHEMISTRY & MOLECULAR BIOLOGY	$2.53 \pm 0.06$	$0.91 \pm 0.00$	42.99	14,673
BIODIVERSITY CONSERVATION	$0.50 \pm 0.03$	$1.00 \pm 0.01$	11.18	504
BIOLOGY	$0.84 \pm 0.03$	$0.95 \pm 0.01$	15.60	2,834
BIOPHYSICS	$3.26 \pm 0.07$	$0.75 \pm 0.00$	28.34	4,364
BIOTECHNOLOGY & APPLIED MICROBIOLOGY	$2.19 \pm 0.04$	$0.78 \pm 0.00$	21.62	2,159
CARDIAC & CARDIOVASCULAR SYSTEMS	$1.56 \pm 0.04$	$0.98 \pm 0.01$	34.24	3,144
CELL & TISSUE ENGINEERING	—	—	—	0
CELL BIOLOGY	$2.40 \pm 0.06$	$0.93 \pm 0.01$	42.42	5,255
CHEMISTRY, ANALYTICAL	$0.96 \pm 0.07$	$1.01 \pm 0.02$	30.14	3,174
CHEMISTRY, APPLIED	$1.66 \pm 0.04$	$0.79 \pm 0.00$	16.84	1,569
CHEMISTRY, INORGANIC & NUCLEAR	$3.39 \pm 0.05$	$0.68 \pm 0.00$	22.98	2,552
CHEMISTRY, MEDICINAL	$1.38 \pm 0.08$	$0.83 \pm 0.01$	16.44	2,185
CHEMISTRY, MULTIDISCIPLINARY	$1.24 \pm 0.02$	$0.96 \pm 0.00$	24.66	8,653
CHEMISTRY, ORGANIC	$2.64 \pm 0.05$	$0.72 \pm 0.00$	21.26	5,772
CHEMISTRY, PHYSICAL	$1.47 \pm 0.03$	$0.91 \pm 0.00$	24.57	6,711
CLINICAL NEUROLOGY	$2.72 \pm 0.04$	$0.82 \pm 0.00$	31.58	3,736
COMPUTER SCIENCE, ARTIFICIAL INTELLIGENCE	$1.68 \pm 0.09$	$1.07 \pm 0.02$	57.99	152
COMPUTER SCIENCE, CYBERNETICS	$0.15 \pm 0.01$	$1.28 \pm 0.02$	12.05	197
COMPUTER SCIENCE, HARDWARE & ARCHITECTURE	$0.30 \pm 0.02$	$1.25 \pm 0.01$	19.76	848
COMPUTER SCIENCE, INFORMATION SYSTEMS	$0.23 \pm 0.01$	$1.23 \pm 0.02$	14.92	816
COMPUTER SCIENCE, INTERDISCIPLINARY APPLICATIONS	$0.39 \pm 0.03$	$1.11 \pm 0.01$	15.27	845
COMPUTER SCIENCE, SOFTWARE ENGINEERING	$0.40 \pm 0.01$	$1.15 \pm 0.01$	17.34	831
COMPUTER SCIENCE, THEORY & METHODS	$0.49 \pm 0.02$	$1.16 \pm 0.01$	21.82	722
CONSTRUCTION & BUILDING TECHNOLOGY	$0.82 \pm 0.08$	$0.80 \pm 0.03$	8.37	146
CRITICAL CARE MEDICINE	$1.32 \pm 0.07$	$0.82 \pm 0.01$	14.85	609
CRYSTALLOGRAPHY	$1.89 \pm 0.09$	$0.79 \pm 0.01$	19.52	1,551
DENTISTRY, ORAL SURGERY & MEDICINE	$0.73 \pm 0.02$	$0.95 \pm 0.01$	13.72	2,077
DERMATOLOGY	$1.47 \pm 0.03$	$0.83 \pm 0.00$	17.26	1,866
DEVELOPMENTAL BIOLOGY	$4.30 \pm 0.14$	$0.75 \pm 0.01$	38.92	546
ECOLOGY	$2.84 \pm 0.03$	$0.84 \pm 0.00$	34.58	2,667
EDUCATION, SCIENTIFIC DISCIPLINES	$0.11 \pm 0.01$	$1.11 \pm 0.02$	3.72	1,234
ELECTROCHEMISTRY	$2.52 \pm 0.09$	$0.81 \pm 0.01$	28.28	1,302
EMERGENCY MEDICINE	$0.23 \pm 0.03$	$1.05 \pm 0.03$	6.38	306
ENDOCRINOLOGY & METABOLISM	$4.85 \pm 0.08$	$0.71 \pm 0.00$	36.50	3,617
ENERGY & FUELS	$0.07 \pm 0.01$	$1.29 \pm 0.02$	5.32	2,294
ENGINEERING, AEROSPACE	$0.14 \pm 0.01$	$1.17 \pm 0.01$	6.32	918
ENGINEERING, BIOMEDICAL	$0.63 \pm 0.03$	$1.05 \pm 0.01$	18.95	1,018

Table S13: Publication year 1980.

Subject-category	$a$	$\alpha$	$\langle c \rangle$	$N$
ENGINEERING, CHEMICAL	$0.54 \pm 0.03$	$1.04 \pm 0.01$	14.33	3,802
ENGINEERING, CIVIL	$0.16 \pm 0.02$	$1.16 \pm 0.02$	6.92	1,232
ENGINEERING, ELECTRICAL & ELECTRONIC	$0.31 \pm 0.01$	$1.17 \pm 0.01$	14.87	5,755
ENGINEERING, ENVIRONMENTAL	$1.01 \pm 0.04$	$0.98 \pm 0.01$	21.55	647
ENGINEERING, GEOLOGICAL	$1.06 \pm 0.03$	$0.90 \pm 0.01$	17.52	220
ENGINEERING, INDUSTRIAL	$0.28 \pm 0.02$	$1.18 \pm 0.02$	15.20	274
ENGINEERING, MANUFACTURING	$0.00 \pm 0.00$	$1.99 \pm 0.08$	4.73	198
ENGINEERING, MARINE	$0.01 \pm 0.00$	$1.43 \pm 0.13$	0.60	205
ENGINEERING, MECHANICAL	$0.39 \pm 0.02$	$1.00 \pm 0.01$	8.94	1,583
ENGINEERING, MULTIDISCIPLINARY	$0.04 \pm 0.00$	$1.43 \pm 0.02$	5.74	2,211
ENGINEERING, OCEAN	$0.02 \pm 0.01$	$1.63 \pm 0.07$	5.21	188
ENGINEERING, PETROLEUM	$0.00 \pm 0.00$	$1.38 \pm 0.08$	0.29	1,092
ENTOMOLOGY	$1.30 \pm 0.05$	$0.77 \pm 0.01$	11.88	1,985
ENVIRONMENTAL SCIENCES	$1.21 \pm 0.03$	$0.88 \pm 0.01$	17.70	3,048
EVOLUTIONARY BIOLOGY	$2.39 \pm 0.06$	$0.88 \pm 0.01$	44.91	898
FISHERIES	$2.76 \pm 0.06$	$0.79 \pm 0.01$	30.63	893
FOOD SCIENCE & TECHNOLOGY	$1.42 \pm 0.04$	$0.82 \pm 0.01$	16.56	2,548
FORESTRY	$0.44 \pm 0.02$	$1.04 \pm 0.01$	11.74	576
GASTROENTEROLOGY & HEPATOLOGY	$1.74 \pm 0.03$	$0.93 \pm 0.00$	30.52	1,708
GENETICS & HEREDITY	$1.88 \pm 0.07$	$0.90 \pm 0.01$	34.32	2,515
GEOCHEMISTRY & GEOPHYSICS	$2.00 \pm 0.03$	$0.92 \pm 0.00$	33.18	2,177
GEOGRAPHY, PHYSICAL	$2.16 \pm 0.06$	$0.79 \pm 0.01$	22.24	428
GEOLOGY	$2.14 \pm 0.05$	$0.81 \pm 0.01$	23.72	413
GEOSCIENCES, MULTIDISCIPLINARY	$1.91 \pm 0.04$	$0.83 \pm 0.00$	23.00	2,026
GERIATRICS & GERONTOLOGY	$1.27 \pm 0.04$	$0.87 \pm 0.01$	17.66	599
HEALTH CARE SCIENCES & SERVICES	$0.25 \pm 0.02$	$1.06 \pm 0.01$	7.47	629
HEMATOLOGY	$2.31 \pm 0.04$	$0.91 \pm 0.00$	39.13	2,725
HISTORY & PHILOSOPHY OF SCIENCE	$0.58 \pm 0.05$	$0.87 \pm 0.02$	7.90	386
IMAGING SCIENCE & PHOTOGRAPHIC TECHNOLOGY	$0.81 \pm 0.08$	$0.98 \pm 0.03$	17.98	128
IMMUNOLOGY	$1.90 \pm 0.04$	$0.94 \pm 0.00$	35.61	6,467
INFECTIOUS DISEASES	$2.02 \pm 0.02$	$0.88 \pm 0.00$	29.48	1,561
INSTRUMENTS & INSTRUMENTATION	$0.12 \pm 0.02$	$1.17 \pm 0.03$	4.98	2,197
INTEGRATIVE & COMPLEMENTARY MEDICINE	$0.71 \pm 0.06$	$0.75 \pm 0.02$	6.21	97
LIMNOLOGY	$3.85 \pm 0.13$	$0.87 \pm 0.01$	65.88	277
MARINE & FRESHWATER BIOLOGY	$3.06 \pm 0.04$	$0.74 \pm 0.00$	26.70	2,297
MATERIALS SCIENCE, BIOMATERIALS	$1.59 \pm 0.16$	$0.91 \pm 0.03$	31.11	36
MATERIALS SCIENCE, CERAMICS	$0.73 \pm 0.03$	$1.03 \pm 0.01$	19.73	1,076
MATERIALS SCIENCE, CHARACTERIZATION & TESTING	$0.21 \pm 0.02$	$0.99 \pm 0.02$	4.66	442
MATERIALS SCIENCE, COATINGS & FILMS	$2.50 \pm 0.07$	$0.77 \pm 0.01$	24.02	1,152
MATERIALS SCIENCE, COMPOSITES	$2.47 \pm 0.26$	$0.73 \pm 0.04$	21.32	28
MATERIALS SCIENCE, MULTIDISCIPLINARY	$0.73 \pm 0.01$	$0.95 \pm 0.00$	13.77	5,489
MATERIALS SCIENCE, PAPER & WOOD	$0.14 \pm 0.01$	$1.17 \pm 0.02$	6.26	349
MATERIALS SCIENCE, TEXTILES	$0.52 \pm 0.04$	$0.78 \pm 0.02$	4.83	235
MATHEMATICAL & COMPUTATIONAL BIOLOGY	$1.26 \pm 0.06$	$0.92 \pm 0.01$	20.33	834
MATHEMATICS	$0.38 \pm 0.01$	$1.05 \pm 0.01$	10.44	5,421
MATHEMATICS, APPLIED	$0.41 \pm 0.02$	$1.09 \pm 0.01$	14.07	2,480
MATHEMATICS, INTERDISCIPLINARY APPLICATIONS	$0.42 \pm 0.02$	$1.14 \pm 0.01$	22.21	1,323
MECHANICS	$0.77 \pm 0.02$	$0.99 \pm 0.01$	16.99	2,893
MEDICAL ETHICS	$0.18 \pm 0.04$	$0.88 \pm 0.05$	2.34	143
MEDICAL INFORMATICS	$0.61 \pm 0.05$	$0.93 \pm 0.02$	10.43	162

Table S14: Publication year 1980.

Subject-category	$a$	$\alpha$	$\langle c \rangle$	$N$
MEDICAL LABORATORY TECHNOLOGY	$1.79 \pm 0.06$	$0.79 \pm 0.01$	18.01	1,379
MEDICINE, GENERAL & INTERNAL	$0.21 \pm 0.01$	$1.30 \pm 0.01$	17.08	14,744
MEDICINE, LEGAL	$0.58 \pm 0.04$	$0.80 \pm 0.01$	5.72	326
MEDICINE, RESEARCH & EXPERIMENTAL	$0.96 \pm 0.03$	$1.08 \pm 0.01$	30.73	4,480
METALLURGY & METALLURGICAL ENGINEERING	$0.16 \pm 0.03$	$1.13 \pm 0.04$	5.64	1,076
METEOROLOGY & ATMOSPHERIC SCIENCES	$1.51 \pm 0.04$	$0.99 \pm 0.01$	34.36	1,123
MICROBIOLOGY	$2.51 \pm 0.04$	$0.82 \pm 0.00$	29.01	4,039
MICROSCOPY	$0.61 \pm 0.04$	$0.92 \pm 0.02$	10.29	334
MINERALOGY	$3.02 \pm 0.10$	$0.79 \pm 0.01$	32.06	634
MINING & MINERAL PROCESSING	$0.37 \pm 0.04$	$1.02 \pm 0.02$	9.43	736
MULTIDISCIPLINARY SCIENCES	$0.98 \pm 0.03$	$1.20 \pm 0.01$	55.30	4,879
MYCOLOGY	$0.89 \pm 0.04$	$0.82 \pm 0.01$	9.99	329
NANOSCIENCE & NANOTECHNOLOGY	—	—	—	0
NEUROIMAGING	$1.92 \pm 0.05$	$0.77 \pm 0.01$	18.18	203
NEUROSCIENCES	$3.44 \pm 0.04$	$0.83 \pm 0.00$	40.03	7,751
NUCLEAR SCIENCE & TECHNOLOGY	$0.73 \pm 0.03$	$0.86 \pm 0.01$	9.08	2,477
NURSING	$0.14 \pm 0.02$	$1.00 \pm 0.04$	2.80	660
NUTRITION & DIETETICS	$1.89 \pm 0.02$	$0.85 \pm 0.00$	24.43	1,677
OBSTETRICS & GYNECOLOGY	$2.13 \pm 0.04$	$0.81 \pm 0.00$	23.67	2,060
OCEANOGRAPHY	$1.21 \pm 0.02$	$1.02 \pm 0.00$	32.97	979
ONCOLOGY	$3.24 \pm 0.05$	$0.79 \pm 0.00$	32.87	4,938
OPERATIONS RESEARCH & MANAGEMENT SCIENCE	$0.53 \pm 0.02$	$1.02 \pm 0.01$	13.42	1,297
OPHTHALMOLOGY	$2.08 \pm 0.02$	$0.79 \pm 0.00$	21.77	2,123
OPTICS	$1.62 \pm 0.04$	$0.88 \pm 0.00$	23.72	3,226
ORNITHOLOGY	$1.09 \pm 0.03$	$0.94 \pm 0.01$	21.85	443
ORTHOPEDICS	$1.13 \pm 0.03$	$0.98 \pm 0.01$	23.92	1,383
OTORHINOLARYNGOLOGY	$2.02 \pm 0.05$	$0.76 \pm 0.01$	18.38	1,413
PALEONTOLOGY	$1.68 \pm 0.10$	$0.86 \pm 0.02$	22.79	330
PARASITOLOGY	$2.70 \pm 0.04$	$0.65 \pm 0.00$	16.61	858
PATHOLOGY	$2.30 \pm 0.04$	$0.79 \pm 0.00$	23.80	2,557
PEDIATRICS	$1.57 \pm 0.04$	$0.86 \pm 0.01$	21.39	2,936
PERIPHERAL VASCULAR DISEASE	$2.58 \pm 0.04$	$0.92 \pm 0.00$	45.33	1,929
PHARMACOLOGY & PHARMACY	$2.48 \pm 0.03$	$0.79 \pm 0.00$	24.75	10,063
PHYSICS, APPLIED	$1.14 \pm 0.02$	$0.92 \pm 0.00$	19.33	6,240
PHYSICS, ATOMIC, MOLECULAR & CHEMICAL	$2.28 \pm 0.11$	$0.87 \pm 0.01$	33.83	5,959
PHYSICS, CONDENSED MATTER	$1.29 \pm 0.03$	$0.94 \pm 0.00$	23.72	5,820
PHYSICS, FLUIDS & PLASMAS	$1.43 \pm 0.04$	$0.91 \pm 0.01$	23.08	1,042
PHYSICS, MATHEMATICAL	$0.58 \pm 0.02$	$1.12 \pm 0.01$	23.10	1,048
PHYSICS, MULTIDISCIPLINARY	$0.60 \pm 0.01$	$1.13 \pm 0.00$	26.89	6,870
PHYSICS, NUCLEAR	$1.51 \pm 0.06$	$0.87 \pm 0.01$	21.34	1,719
PHYSICS, PARTICLES & FIELDS	$0.95 \pm 0.03$	$1.11 \pm 0.01$	36.32	1,480
PHYSIOLOGY	$5.05 \pm 0.06$	$0.74 \pm 0.00$	43.28	3,330
PLANT SCIENCES	$1.85 \pm 0.03$	$0.81 \pm 0.00$	20.36	6,050
POLYMER SCIENCE	$1.81 \pm 0.04$	$0.85 \pm 0.01$	24.10	2,573
PRIMARY HEALTH CARE	$0.11 \pm 0.02$	$1.10 \pm 0.03$	3.46	595
PSYCHIATRY	$1.63 \pm 0.02$	$0.95 \pm 0.00$	31.38	2,919
PSYCHOLOGY	$1.11 \pm 0.07$	$1.07 \pm 0.02$	44.07	1,186
PUBLIC, ENVIRONMENTAL & OCCUPATIONAL HEALTH	$1.04 \pm 0.02$	$0.94 \pm 0.00$	18.56	2,876
RADIOLOGY, NUCLEAR MEDICINE & MEDICAL IMAGING	$1.61 \pm 0.02$	$0.85 \pm 0.00$	21.08	4,132
REHABILITATION	$0.50 \pm 0.02$	$1.01 \pm 0.01$	11.61	247

Table S15: Publication year 1980.

Subject-category	$a$	$\alpha$	$\langle c \rangle$	$N$
REMOTE SENSING	$1.09 \pm 0.06$	$0.90 \pm 0.01$	17.46	329
REPRODUCTIVE BIOLOGY	$3.61 \pm 0.09$	$0.71 \pm 0.01$	27.35	780
RESPIRATORY SYSTEM	$1.62 \pm 0.02$	$0.86 \pm 0.00$	21.30	1,497
RHEUMATOLOGY	$1.76 \pm 0.06$	$0.88 \pm 0.01$	28.77	720
ROBOTICS	—	—	—	0
SOIL SCIENCE	$1.60 \pm 0.05$	$0.88 \pm 0.01$	26.60	1,207
SPECTROSCOPY	$1.94 \pm 0.09$	$0.82 \pm 0.01$	22.50	1,367
SPORT SCIENCES	$1.87 \pm 0.04$	$0.88 \pm 0.00$	26.73	1,008
STATISTICS & PROBABILITY	$0.79 \pm 0.02$	$1.04 \pm 0.01$	25.78	1,524
SUBSTANCE ABUSE	$1.77 \pm 0.07$	$0.86 \pm 0.01$	24.37	175
SURGERY	$1.71 \pm 0.02$	$0.87 \pm 0.00$	24.04	6,954
TELECOMMUNICATIONS	$0.22 \pm 0.01$	$1.21 \pm 0.02$	15.33	967
THERMODYNAMICS	$0.70 \pm 0.02$	$0.93 \pm 0.01$	11.99	1,160
TOXICOLOGY	$2.54 \pm 0.06$	$0.70 \pm 0.01$	18.51	1,804
TRANSPLANTATION	$0.77 \pm 0.04$	$0.97 \pm 0.01$	15.76	680
TRANSPORTATION SCIENCE & TECHNOLOGY	$0.09 \pm 0.01$	$1.34 \pm 0.02$	9.60	250
TROPICAL MEDICINE	$2.12 \pm 0.05$	$0.70 \pm 0.01$	15.67	698
UROLOGY & NEPHROLOGY	$1.81 \pm 0.04$	$0.81 \pm 0.01$	19.91	1,656
VETERINARY SCIENCES	$1.18 \pm 0.02$	$0.79 \pm 0.00$	11.72	3,318
VIROLOGY	$3.48 \pm 0.08$	$0.73 \pm 0.01$	27.90	1,648
WATER RESOURCES	$0.95 \pm 0.03$	$0.96 \pm 0.01$	19.82	1,046
ZOOLOGY	$1.48 \pm 0.04$	$0.92 \pm 0.01$	25.08	3,147
<b>TOTAL</b>	<b><math>1.00 \pm 0.00</math></b>	<b><math>1.00 \pm 0.00</math></b>	<b>24.55</b>	<b>355,140</b>

Table S16: Publication year 1980.

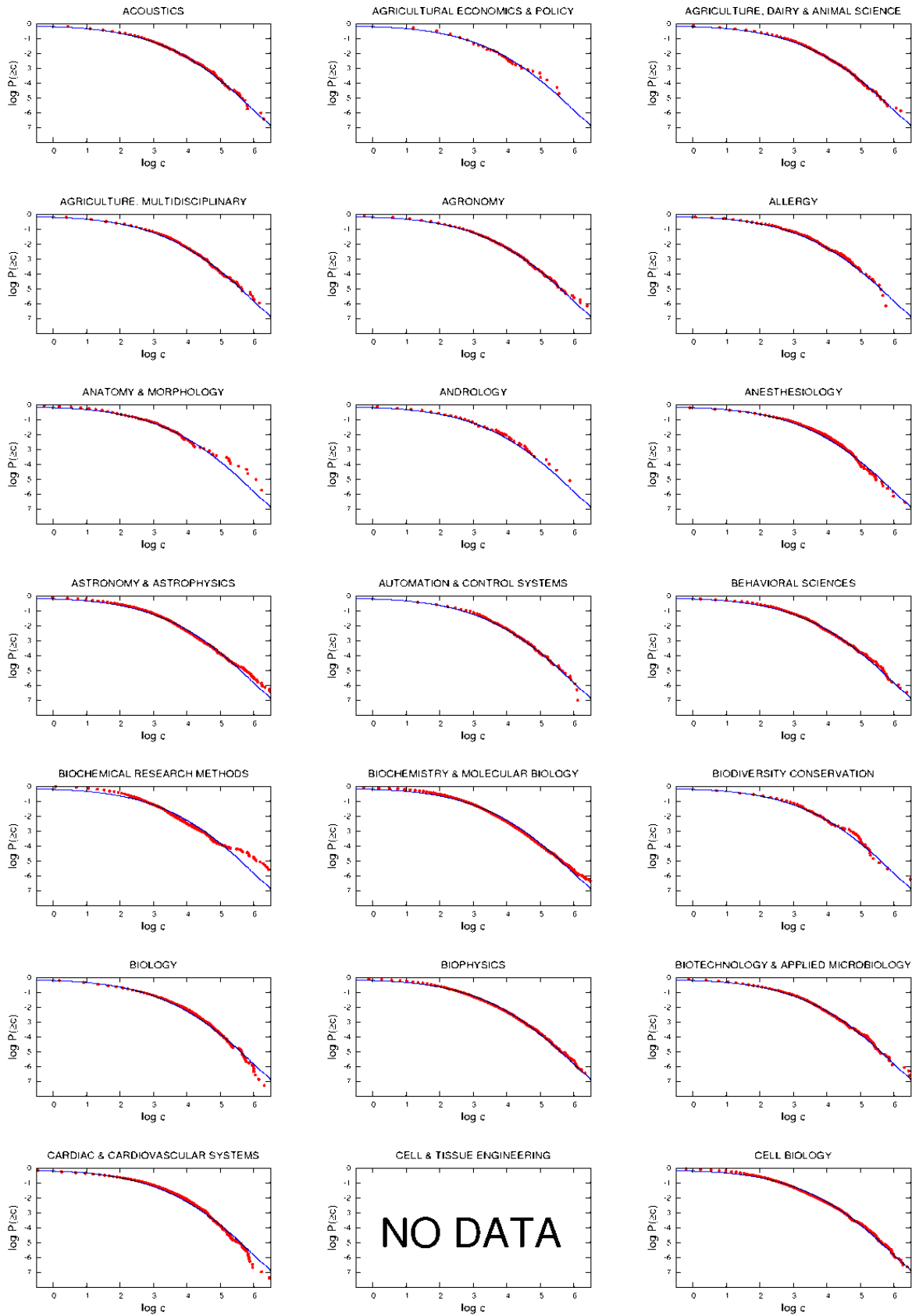


Figure S10: Publication year 1980.

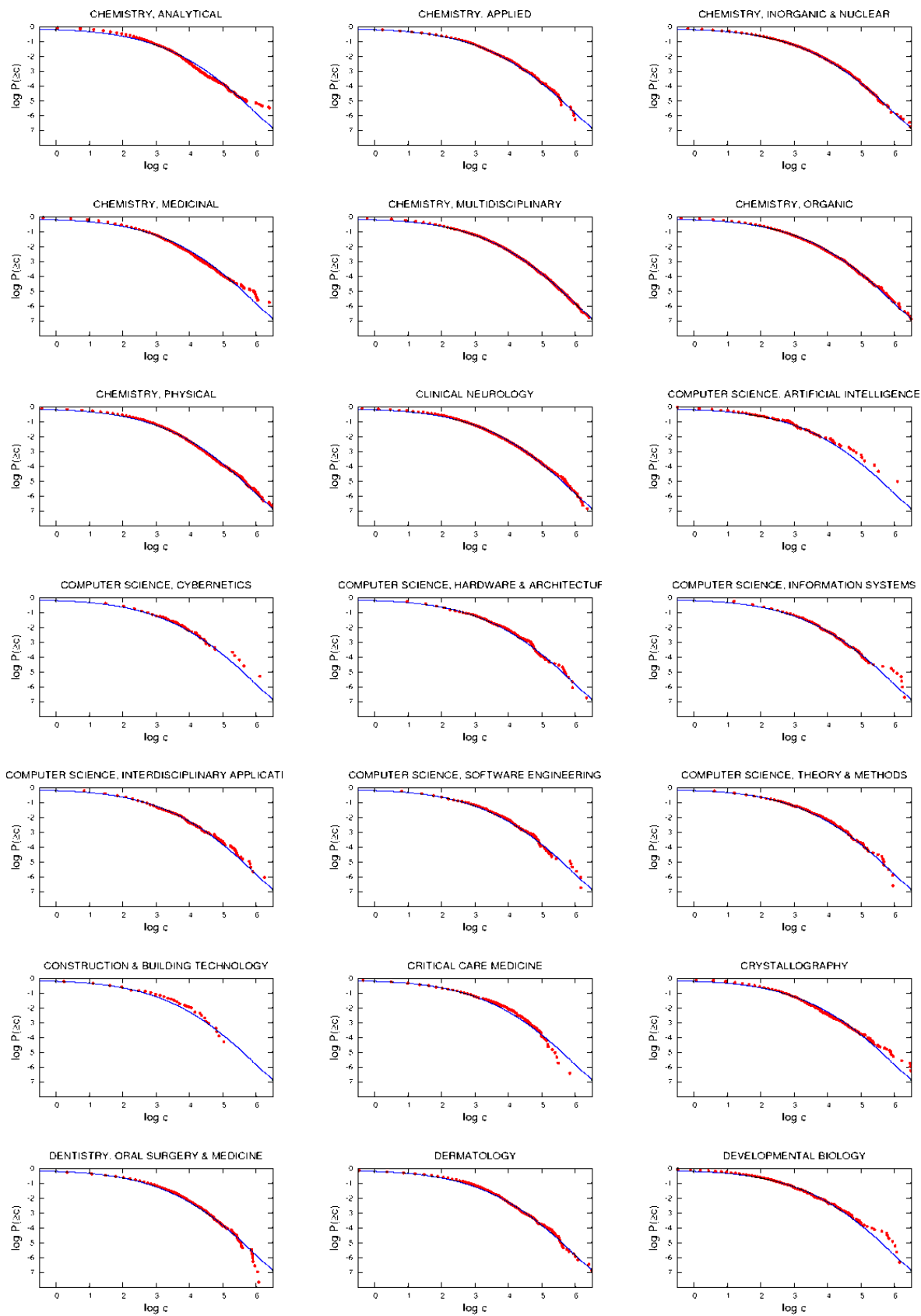


Figure S11: Publication year 1980.

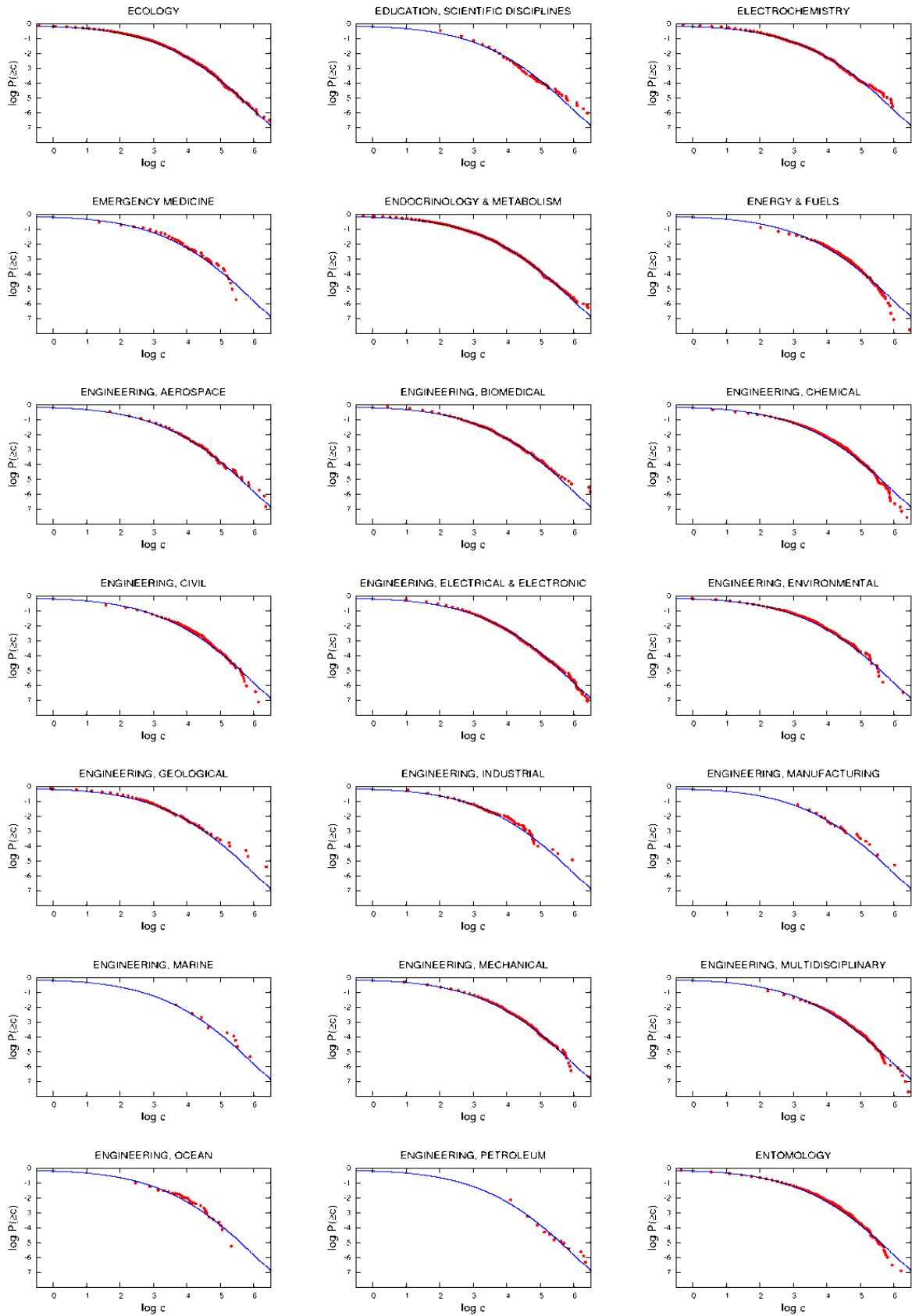


Figure S12: Publication year 1980.



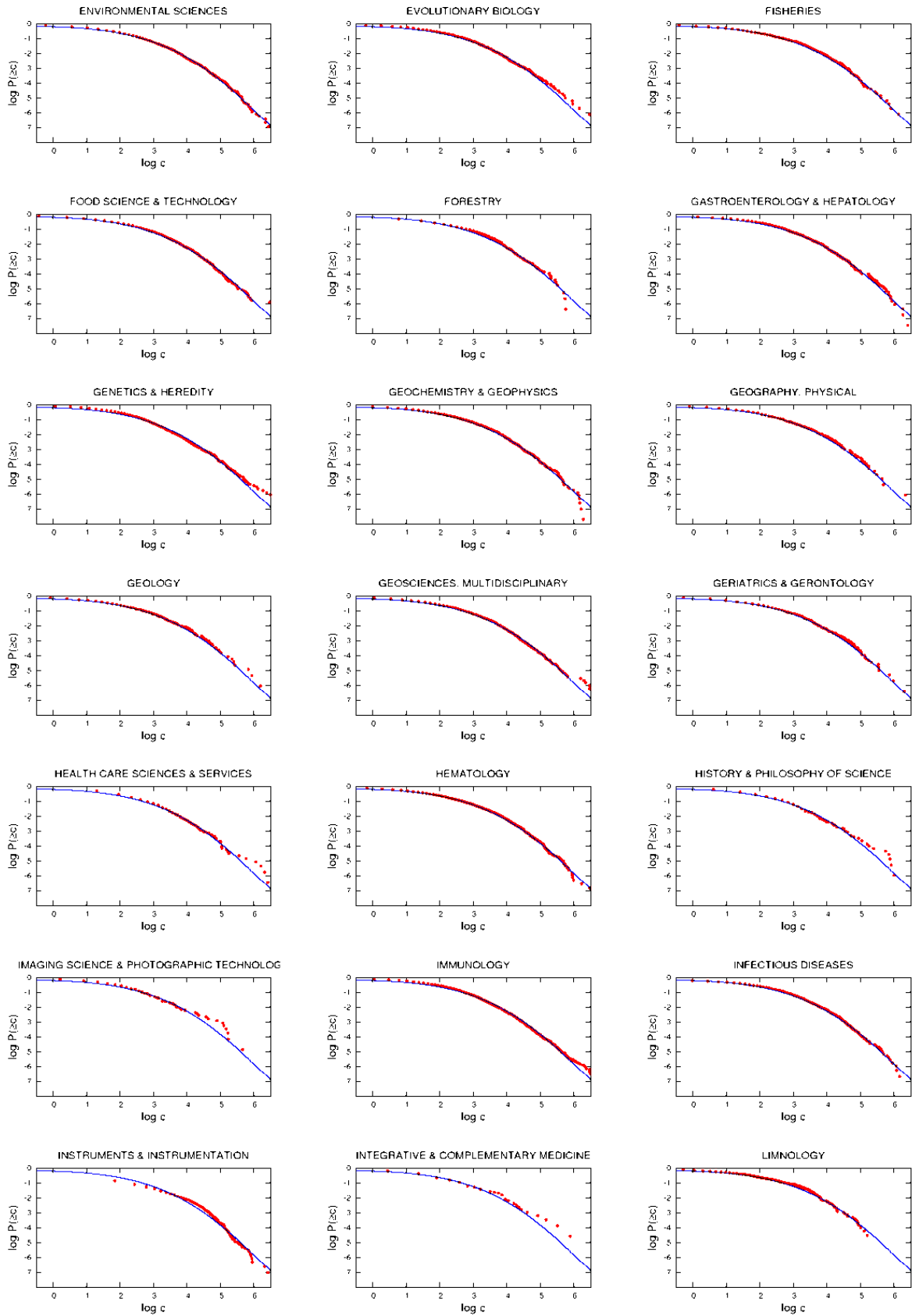


Figure S13: Publication year 1980.

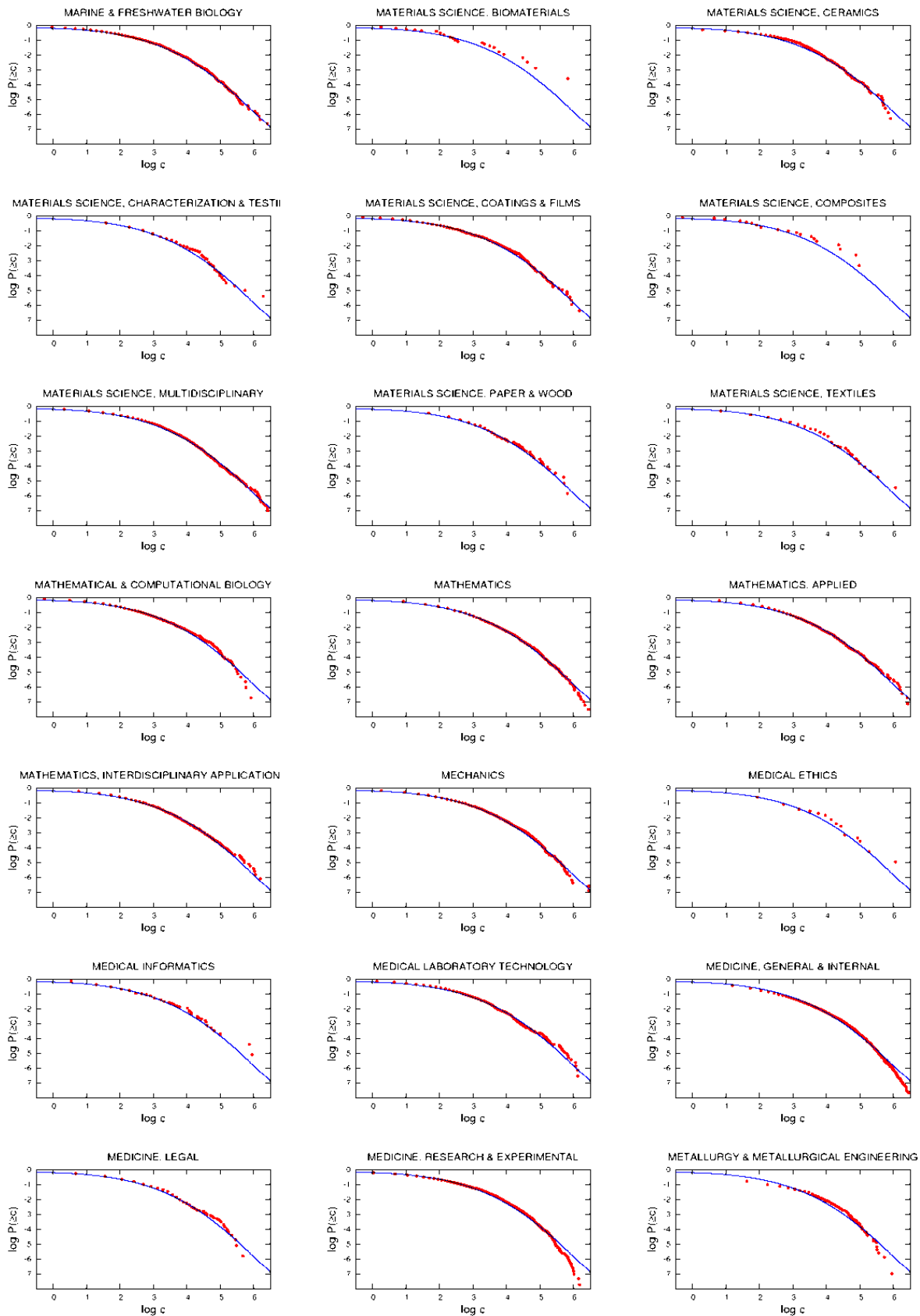


Figure S14: Publication year 1980.

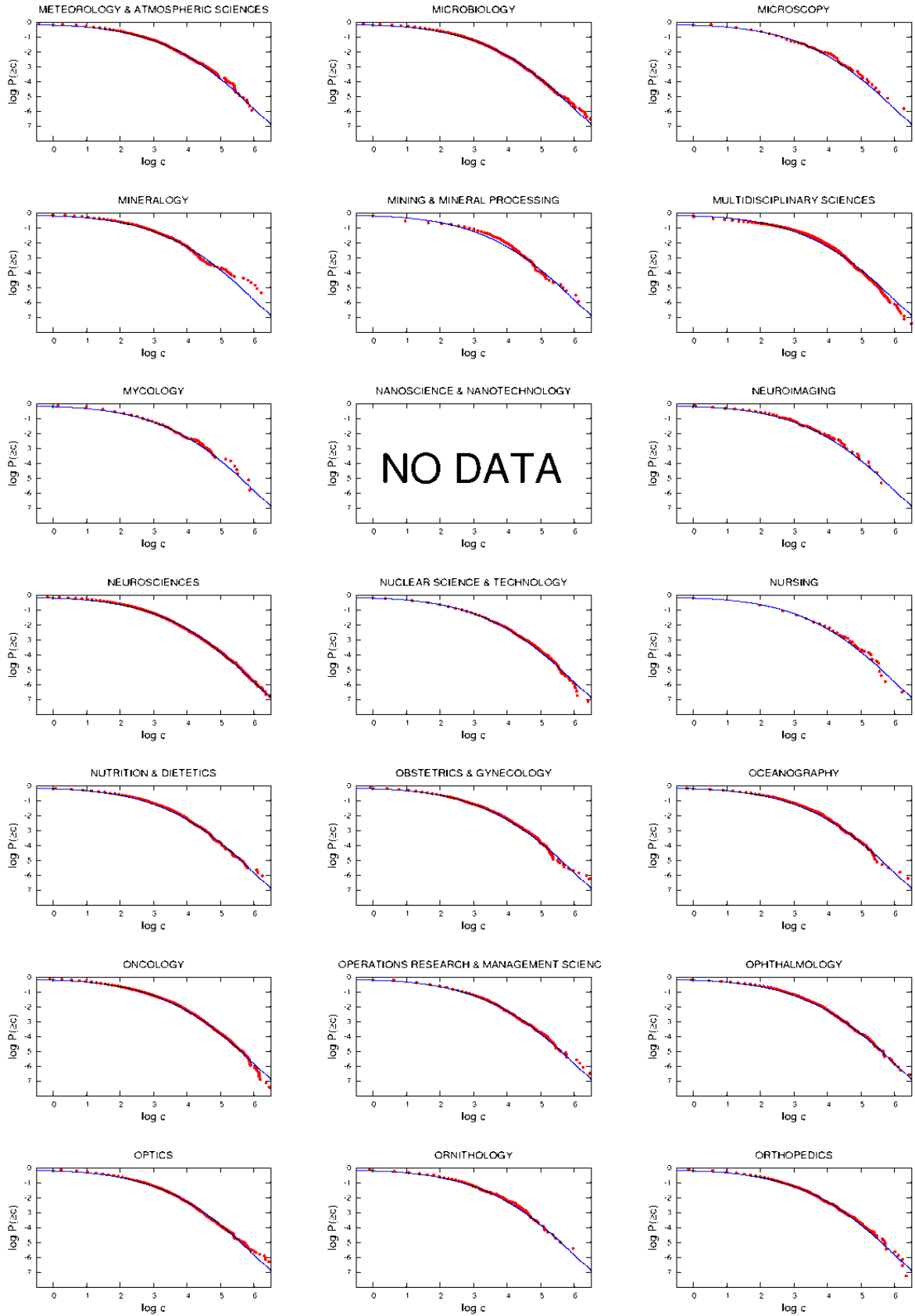


Figure S15: Publication year 1980.

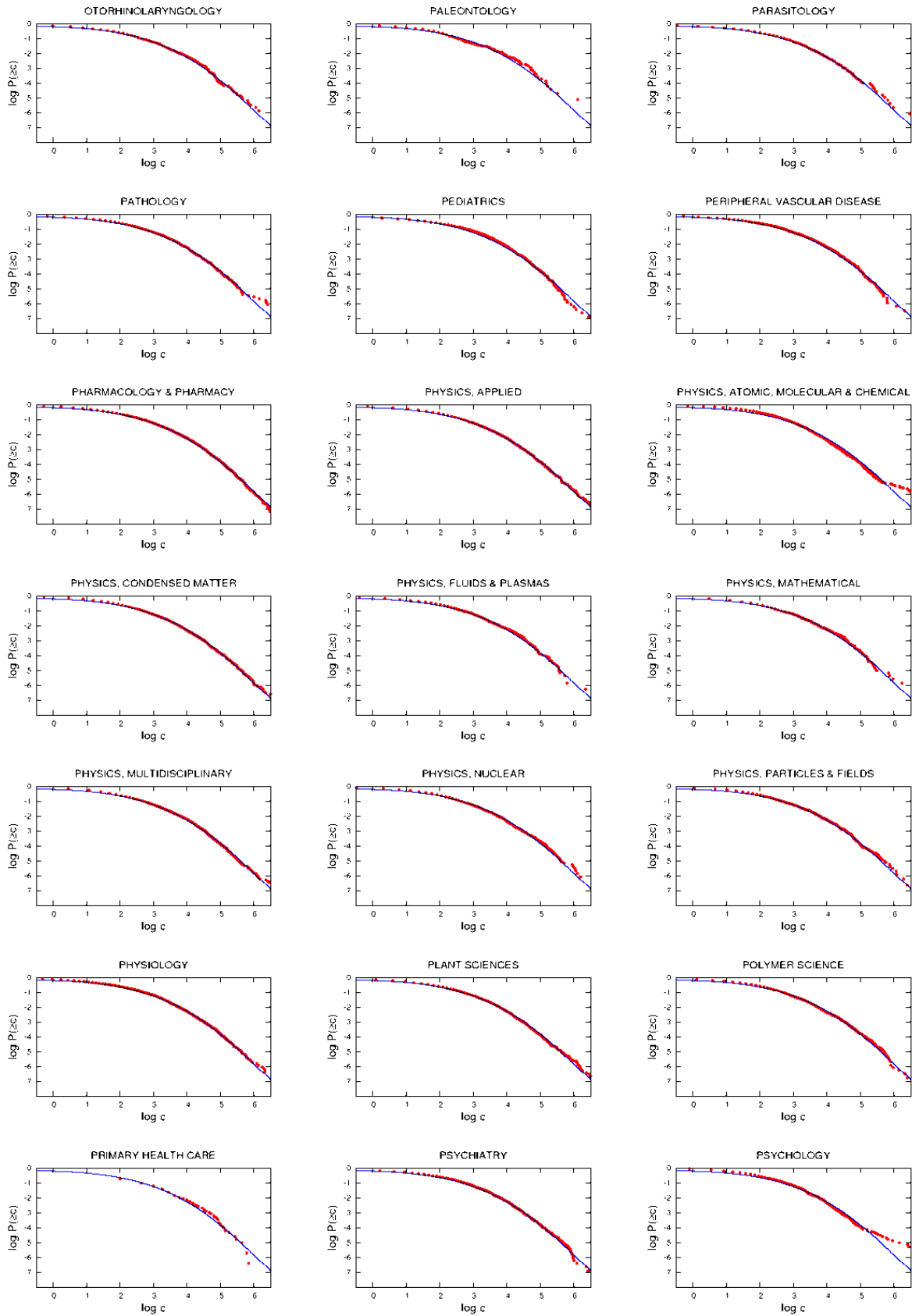


Figure S16: Publication year 1980.

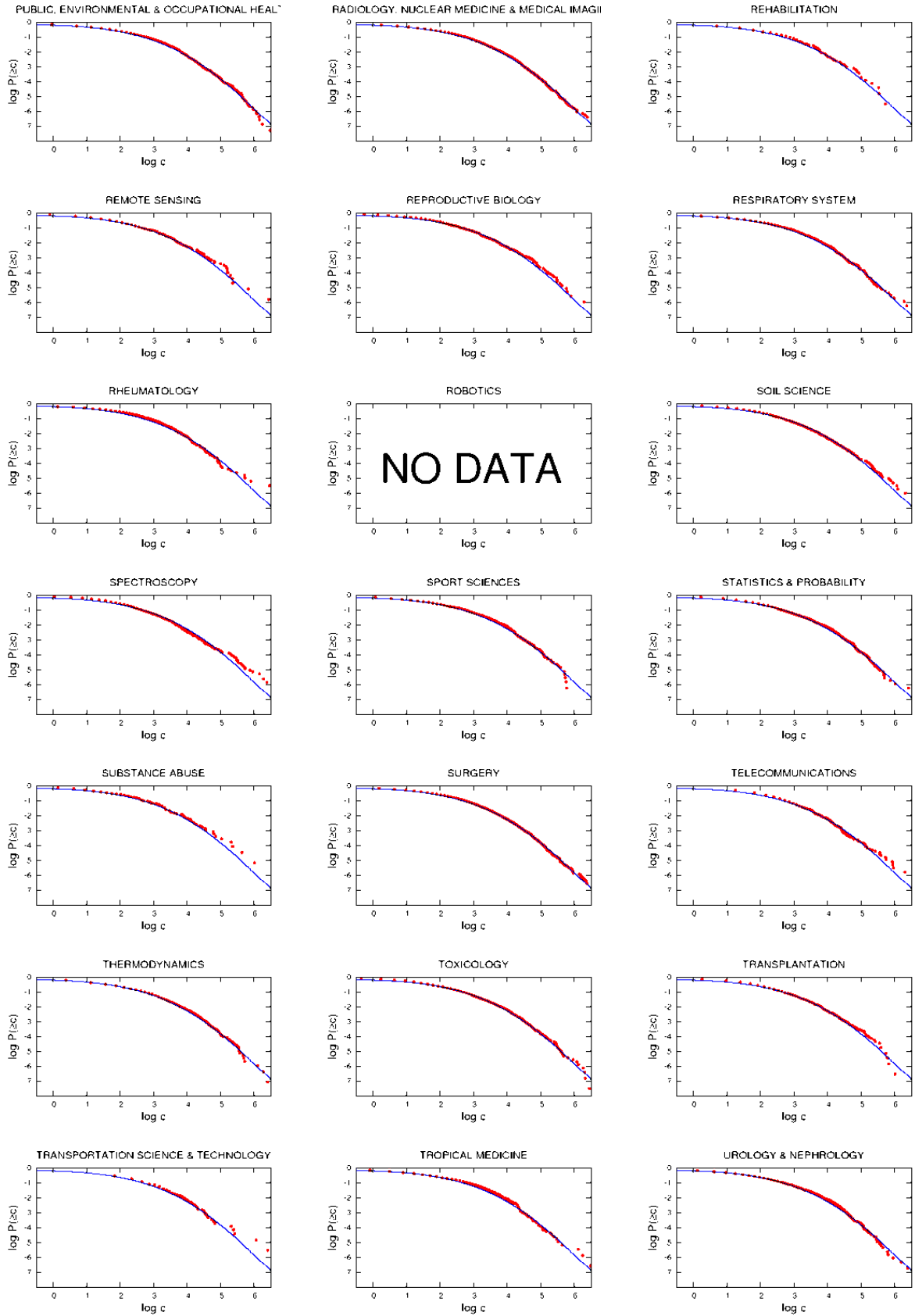


Figure S17: Publication year 1980.

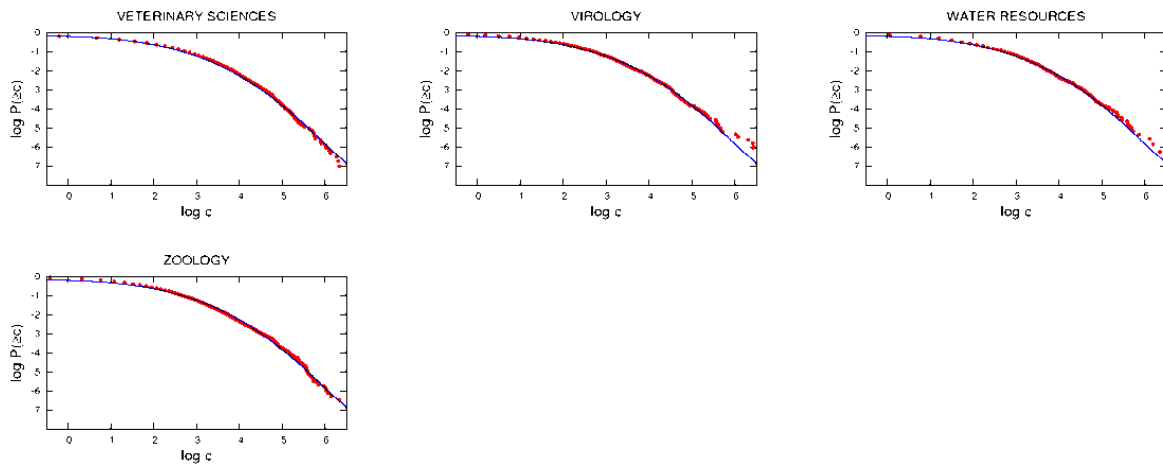


Figure S18: Publication year 1980.

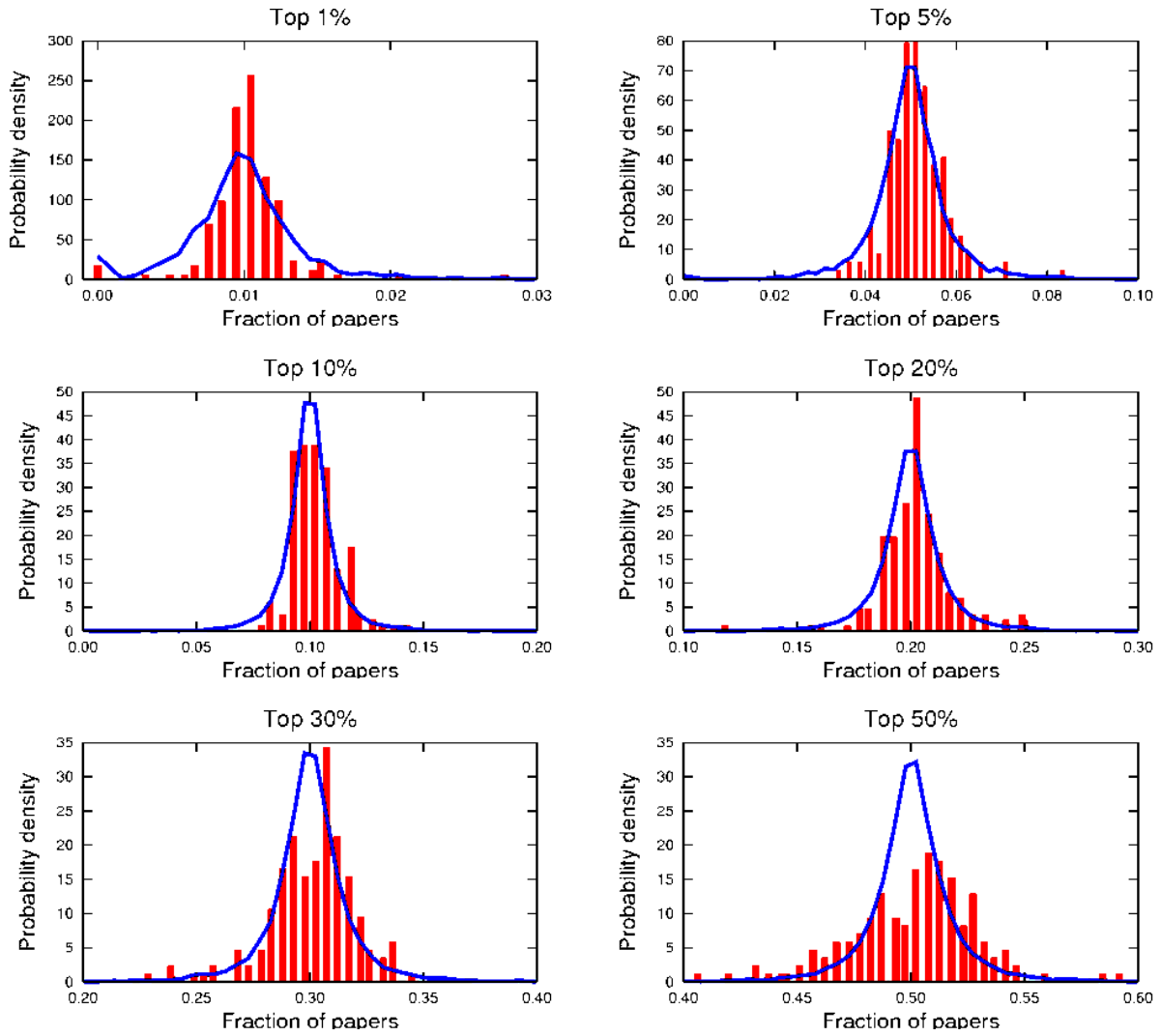


Figure S19: Publication year 1980.