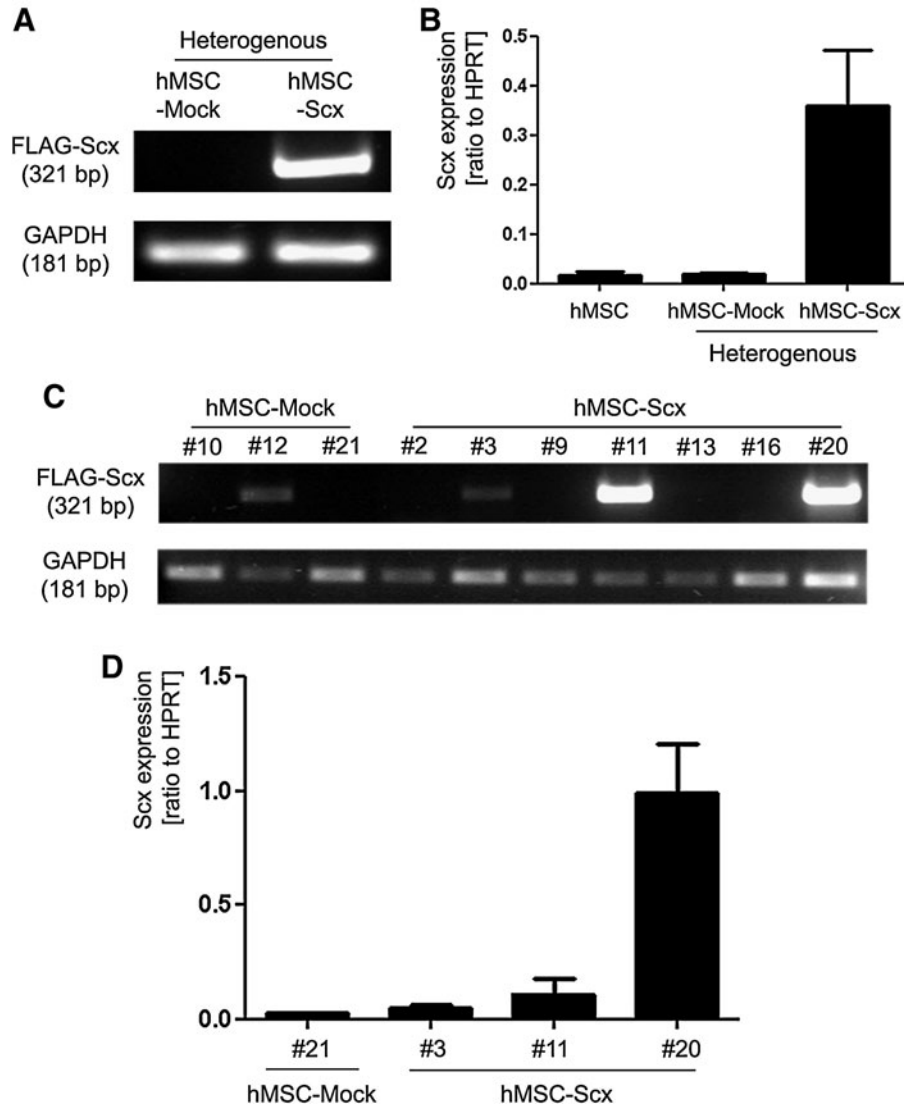


Supplementary Data



SUPPLEMENTARY FIG. S1. Analysis of hMSC-Scx and hMSC-Mock heterogeneous populations and single-cell-derived clones by semi-quantitative RT-PCR with a primer set annealing on FLAG and Scx cDNA (**A**, **C**) and quantitative RT-PCR with a primer set annealing within Scx cDNA (**B**, **D**). First, hMSC-Mock and hMSC-Scx heterogeneous cell populations were analyzed for Scx expression directly after the cell selection (**A**, **B**). Then, multiple single-cell-derived clones were established, and 3 different hMSC-Mock and 7 hMSC-Scx clones were screened for the transgene expression (**C**). Last, hMSC-Mock21 and hMSC-Scx3, 11 and 20 were compared for Scx expression levels by quantitative RT-PCR analysis (**D**). Symbol: #, cell clone. Scx, scleraxis; hMSC, human mesenchymal stem cell; RT-PCR, reverse transcriptase-polymerase chain reaction; GAPDH, glyceraldehyde-3-phosphate dehydrogenase; HPRT, hypoxanthine phosphoribosyltransferase; FLAG.