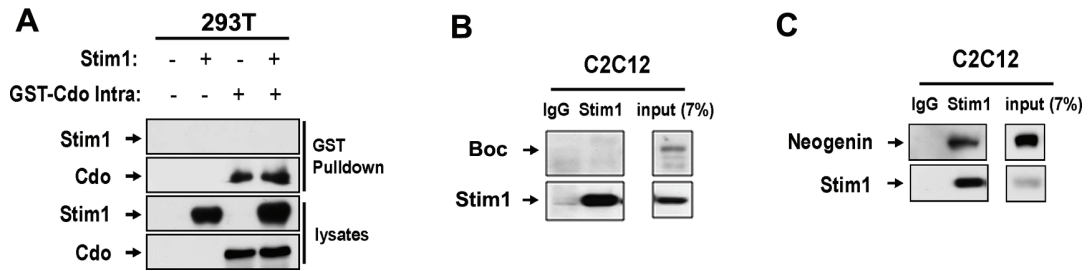


Supplementary Fig. 1 Stim1 depletion causes impaired myotube formation. (A) Lysates of C2C12 cells transfected with the control shRNA or two different Stim1 shRNA constructs (shStim1-1, 2) were immunoblotted with antibodies to Stim1 and β-tubulin as a loading control. (B) C2C12/pSuper and C2C12/shStim1-1 cells were induced to differentiate for 3 days and immunostained with MHC antibodies.



Supplementary Fig. 2 Cdo intracellular region does not interact with Stim1. (A) Lysates of 293T cells transfected with Stim1 and GST-tagged Cdo intracellular region (GST-Cdo intra) were subjected to pulldown with glutathione-beads followed by immunoblotting. (B) Lysates of C2C12 cells at DM1 were immunoprecipitated with control rabbit IgG or Stim1 antibodies and immunoblotted with antibodies to Boc or Stim1. (C) Lysates of C2C12 cells at DM1 were immunoprecipitated with control rabbit IgG or Stim1 antibodies and immunoblotted with antibodies to Neogenin or Stim1.