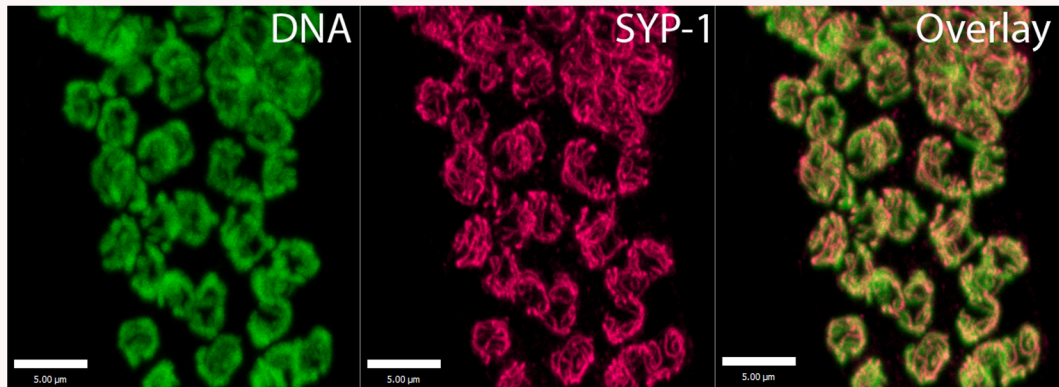
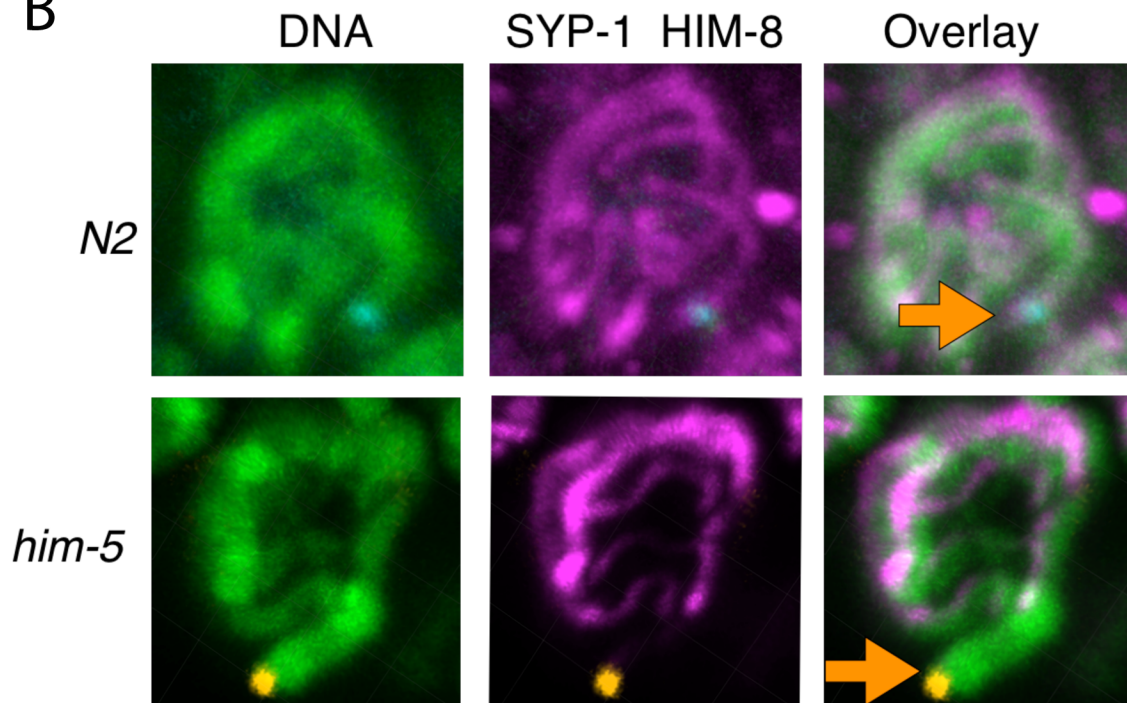


A



B



**Figure S3** *him-5* mutants have a desynapsed X chromosome at pachytene. A. The SC is fully established in early pachytene as shown by the complete coincidence of SYP staining (magenta) with DNA (green). B. A mid-to-late pachytene nucleus stained for DNA (green), SYP-1 (magenta), and HIM-8 (cyan in wild type; yellow in *him-5*) is shown. In wild type, all chromosomes are fully synapsed. As seen in the overlay on the bottom row, one chromosome is desynapsed and lacks SYP-1 staining in *him-5(ok1896)* mutants. The desynapsed chromosome stains with an antibody against the X chromosome pairing center binding protein, HIM-8 indicating that this is the X chromosome. Note that a single HIM-8 focus is seen indicating that the X chromosomes remain paired after desynapsis.