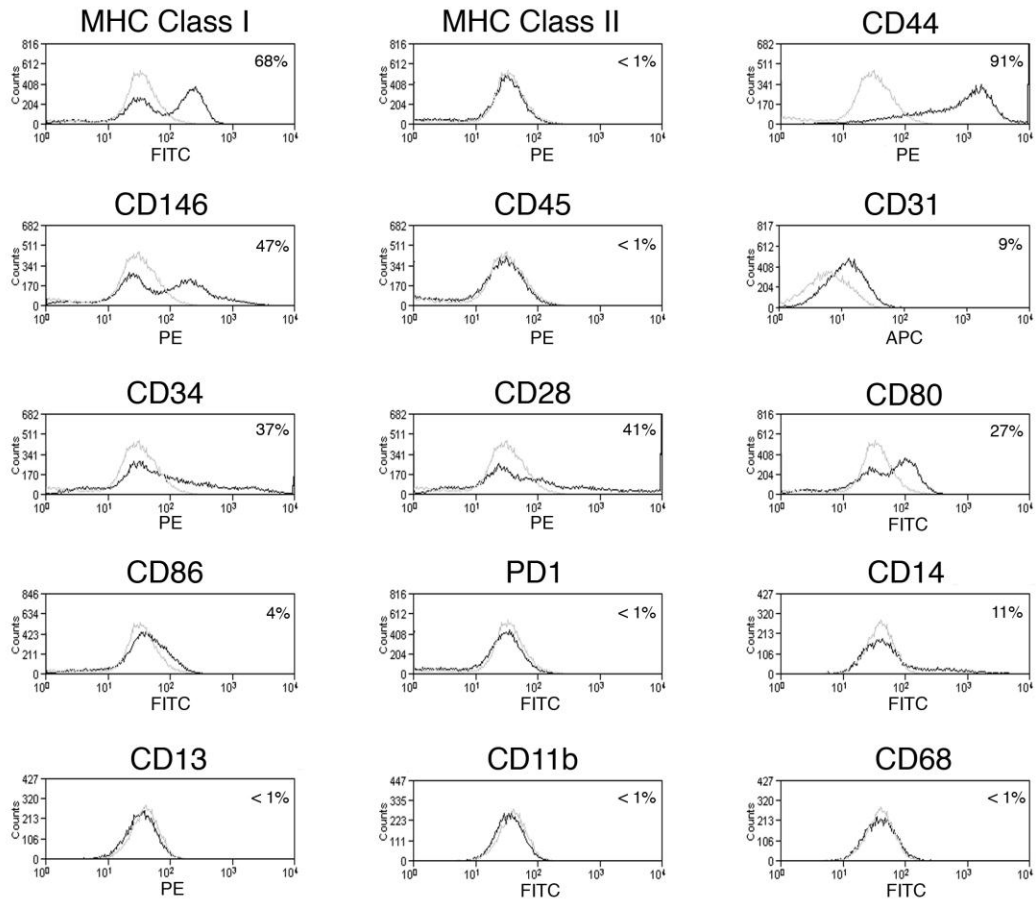
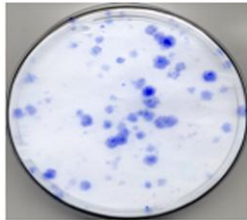


A

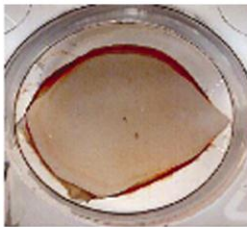


B

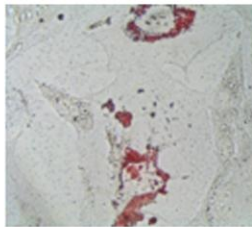


C

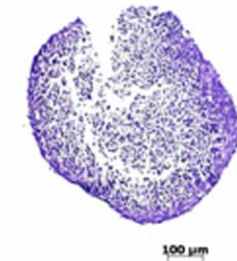
Osteogenic differentiation



Adipogenic differentiation



Chondrogenic differentiation



Supplementary figure 1: Immunophenotype, clonogenic capacity, and *in vitro* differentiation potential of MSC population. (A) Representative immunophenotype of naïve MSC. Flow cytometric analysis shows that MSC constitute a heterogeneous population characterized by the expression of MHC Class I antigens in more than 70% of cells, and CD44 in more than 90% of cells. About 50% of MSC show expression of CD146. MSC express variable levels of CD 34 (37%) and CD28 (41%) costimulatory molecule, CD14 (11%), and CD80 (27%) with a bimodal appearance. The expression of MHC Class II antigens, CD31, CD45, PD1, CD11b, CD13, and CD68 is always less than 4%. Areas under the black line represent molecule expression on tested cells, and areas under the grey line represent the blank (unstained cells). (B) Representative image of the colony-forming efficiency assay of MSC plated and cultured in standard medium. (C) Representative image of *in vitro* differentiation potential of MSC toward the osteogenic, adipogenic, and chondrogenic lineages.