

Supplementary information, Figure S12

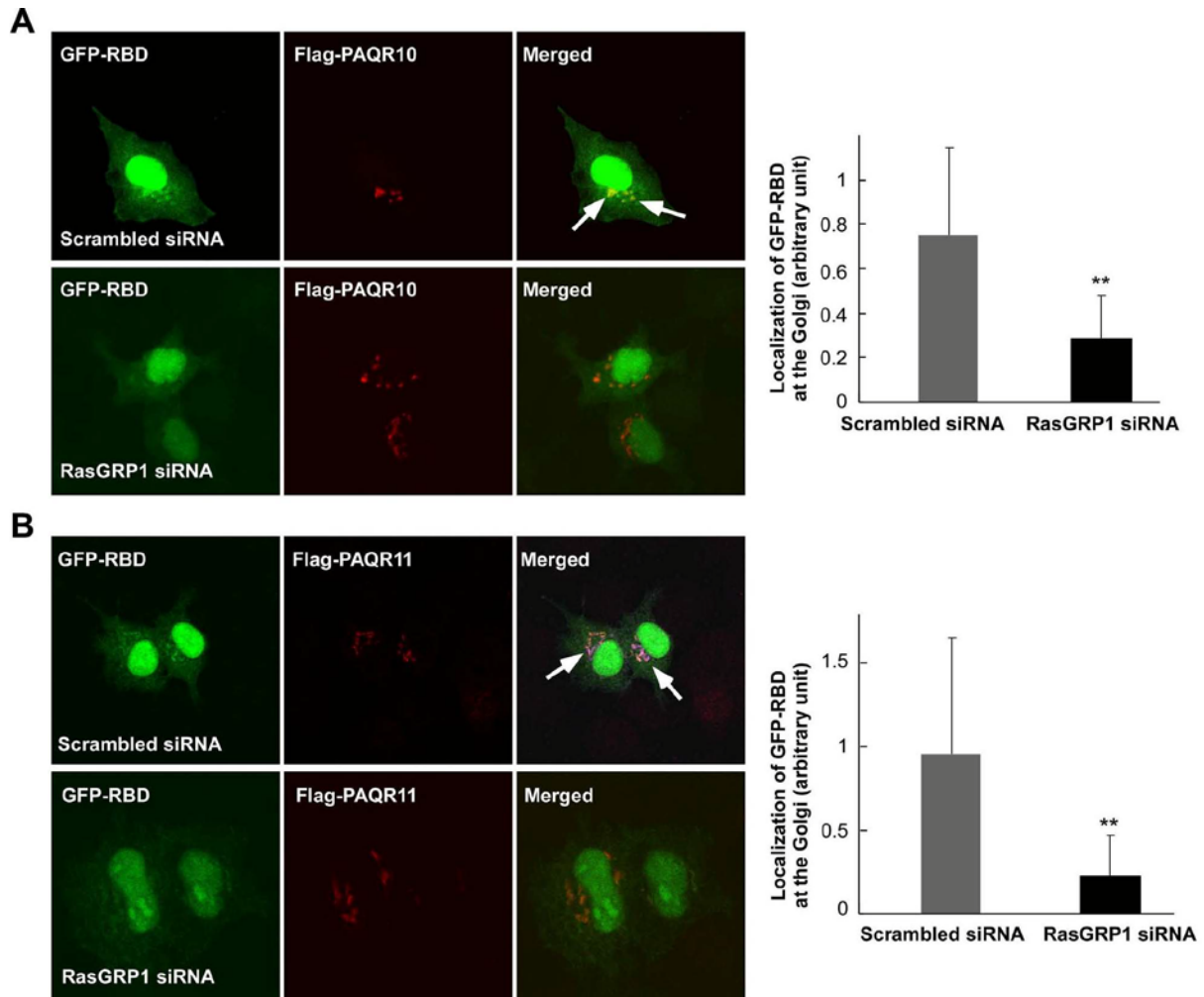


Figure S12 Silencing of RasGRP1 affects activation of Ras in the Golgi apparatus by PAQR10/PAQR11 overexpression. HeLa cells were cotransfected with synthesized siRNA, GFP-RBD, and Flag-tagged PAQR10 (**A**) or Flag-tagged PAQR11 (**B**) as indicated. Forty eight hours after transfection, the cells were serum-starved overnight before immunostaining and confocal analysis. The arrow indicates colocalization of PAQR10 or PAQR11 with GFP-RBD. The relative signal intensity of Golgi accumulation of GFP-RBD was quantified and shown in the right panels. ** $P < 0.01$ and ** $P < 0.01$ between the two groups.