

Supplementary information, Figure S2

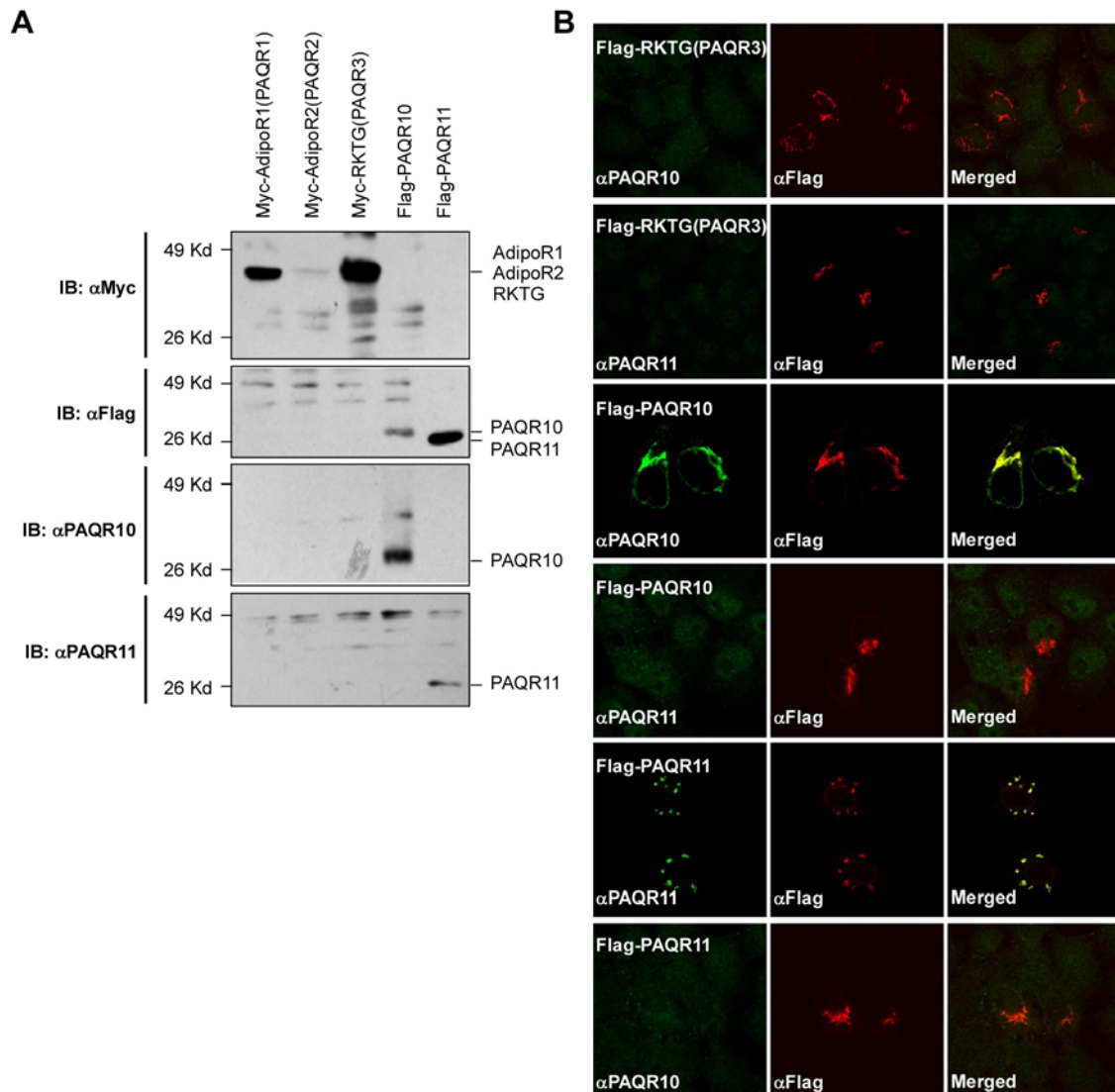


Figure S2 Characterization of PAQR10/11 antibodies. **(A)** Analysis of polyclonal antibodies against PAQR10 and PAQR11 by western blotting. HEK293T cells were transiently transfected with the plasmids as indicated. Twenty-four hours after transfection, total cell lysate was used in western blotting with the antibodies as indicated. **(B)** Analyses of polyclonal antibodies against PAQR10 and PAQR11 by immunofluorescence staining. HeLa cells were transfected with the plasmids as indicated (shown in the left upper corner) and used in immunostaining and confocal analysis with the antibodies as indicated (shown in the left lower corner).